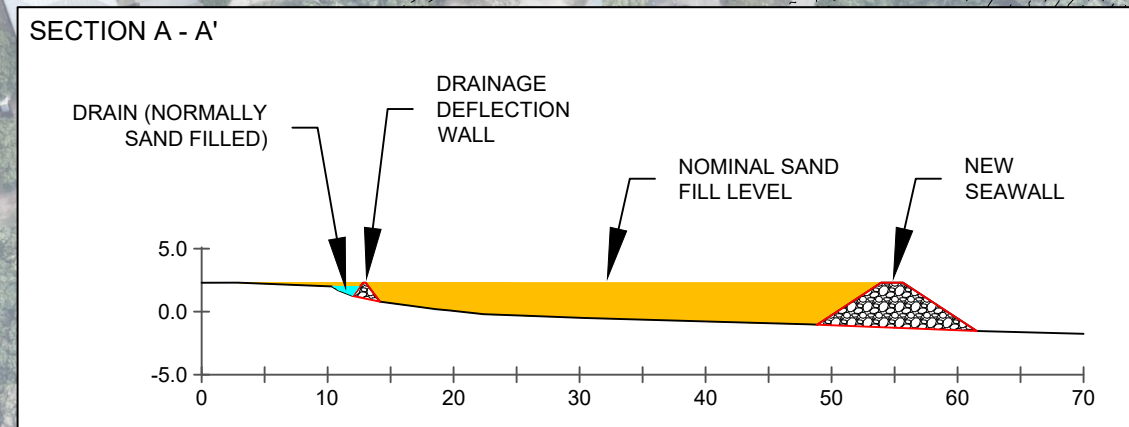
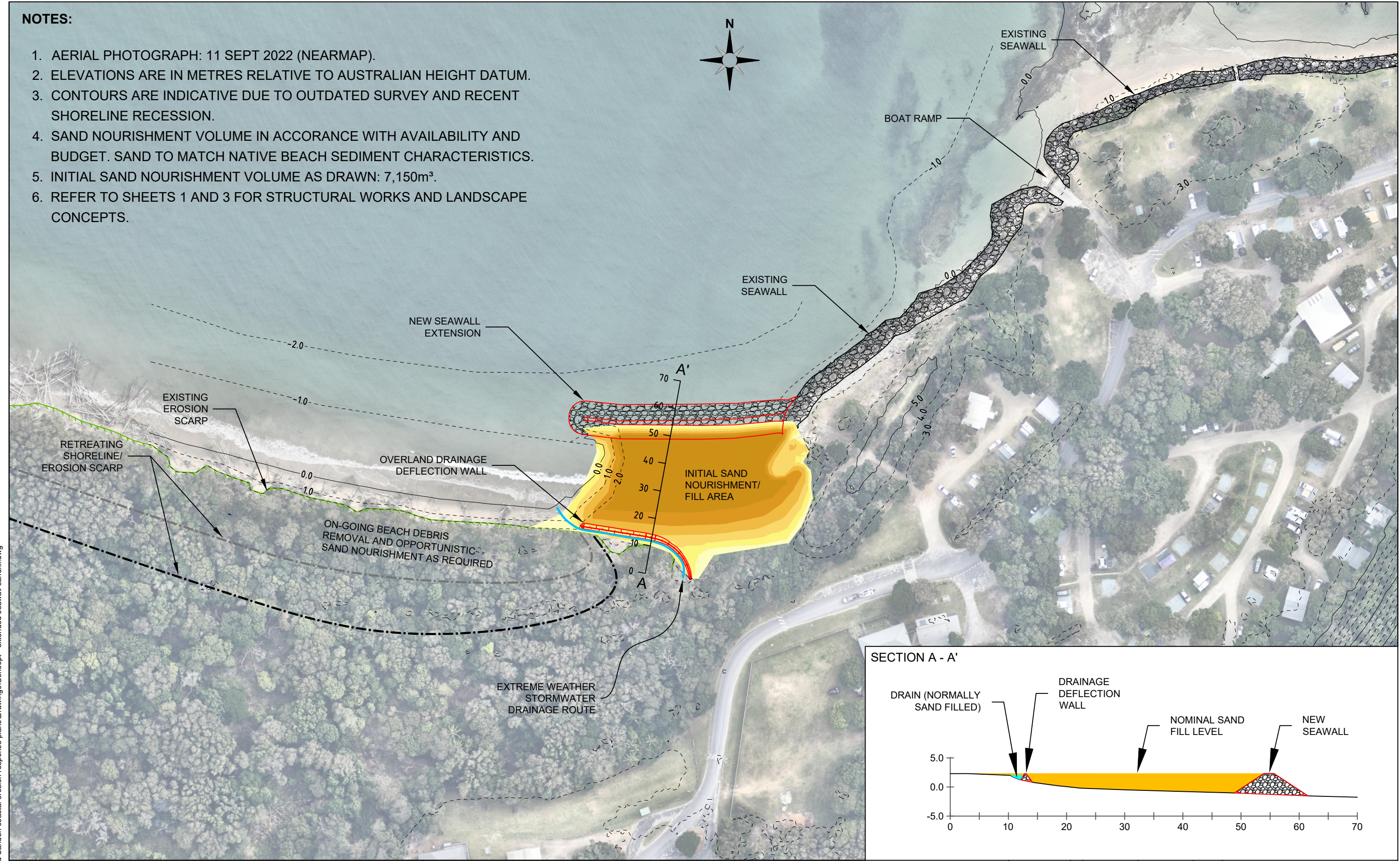


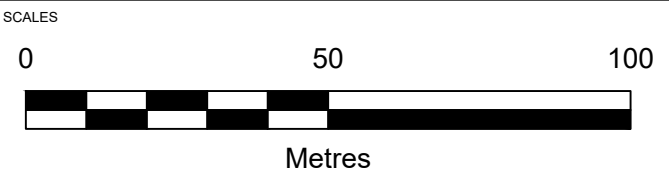
NOTES:

1. AERIAL PHOTOGRAPH: 11 SEPT 2022 (NEARMAP).
2. ELEVATIONS ARE IN METRES RELATIVE TO AUSTRALIAN HEIGHT DATUM.
3. CONTOURS ARE INDICATIVE DUE TO OUTDATED SURVEY AND RECENT SHORELINE RESSION.
4. SAND NOURISHMENT VOLUME IN ACCORANCE WITH AVAILABILITY AND BUDGET. SAND TO MATCH NATIVE BEACH SEDIMENT CHARACTERISTICS.
5. INITIAL SAND NOURISHMENT VOLUME AS DRAWN: 7,150m³.
6. REFER TO SHEETS 1 AND 3 FOR STRUCTURAL WORKS AND LANDSCAPE CONCEPTS.



Y:\22-037 Woody Head and Sandon coastal erosion response plans\Drawings\Concept - extended seawall sandfill.dwg

DRAWING PRODUCED BY:
 HYDROSPHERE CONSULTING
 P.O. BOX 7059
 BALLINA NSW 2478
 WWW.HYDROSPHERE.COM.AU



CLIENT
 NATIONAL PARKS AND WILDLIFE SERVICE

JOB NUMBER
 22-037

WOODY HEAD EROSION RESPONSE
 SAND NOURISHMENT CONCEPT

REVISION	DATE	DESCRIPTION	DRAWN	DRAWING NUMBER
	2022-12-07	REV 0	MH	SHEET 2

SHEET 2