

Help save the Southern Corroboree Frog (*Pseudophryne corroboree*)

Scientific name: *Pseudophryne corroboree*

Conservation status in NSW: Critically Endangered

Commonwealth status: Critically Endangered

Saving our Species management stream: Iconic species

Species profile:

<http://www.environment.nsw.gov.au/threatenedspeciesapp/profile.aspx?id=10693>

Saving our Species aims to conserve as many threatened species as possible. This conservation project aims to secure the Southern Corroboree Frog in the wild in NSW for 100 years, engage local communities in its conservation, and encourage the NSW community to identify with it as a flagship for threatened species conservation. The project was developed by experts who identified the minimum number of necessary management sites and conservation actions required to conserve the species.

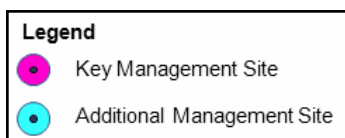
Two sites have been identified in NSW (ordered north to south). They are:

- Captive Breeding Program in Mosman; Sydney Harbour And Botany Bay (Unincorporated) LGAs
- Jagungal Wilderness Area in Snowy River; Tumbarumba LGAs

More information about each site is provided on the following pages.

All conservation work being undertaken to conserve the Southern Corroboree Frog around the state is vital to its recovery. If you are working on one of the sites identified in this conservation project, or on a site elsewhere, please contact us at www.environment.nsw.gov.au/savingourspecies/contactus.htm

Map of Southern Corroboree Frog key management sites



Site 1: Captive Breeding Program

The captive breeding program includes ongoing work at Taronga Zoo, plus three Victorian organisations; Melbourne Zoo, Healesville Sanctuary and the Amphibian Research Centre.

Total site area (ha): 27.50

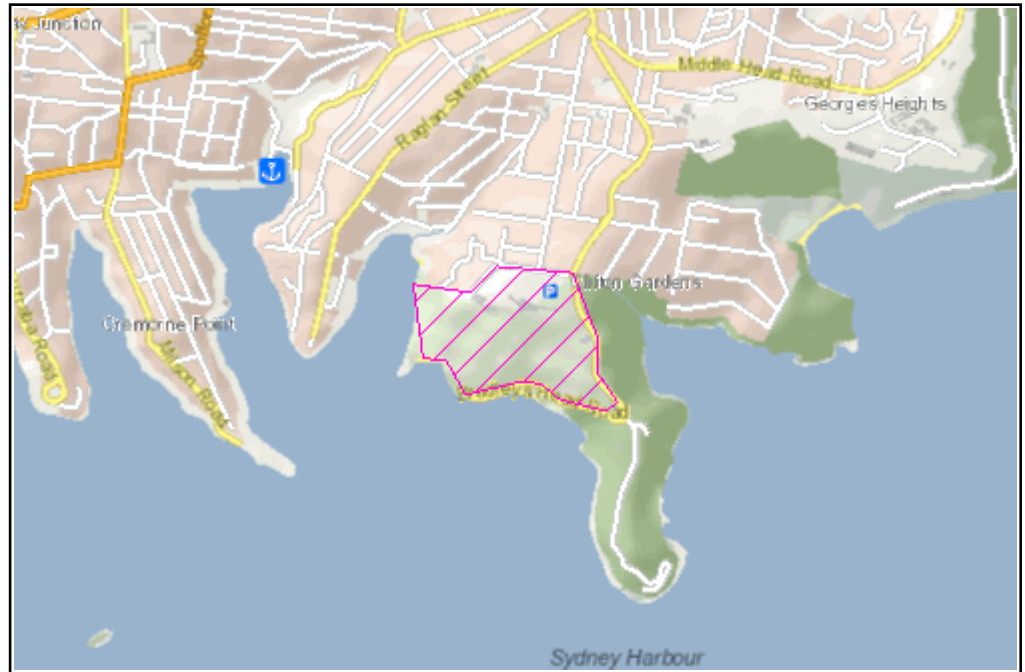
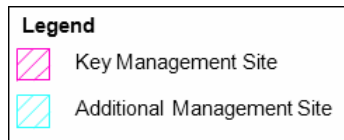
LGA: Mosman; Sydney Harbour And Botany Bay (Unincorporated)

NPWS reserve: Sydney Harbour National Park

Occurs on private land: No

Estimated population size: Variable population

Management site map



Management activities to protect the Southern Corroboree Frog at the site

Threat name	Objective	Action
Small population size	Maintain ex-situ population for supplementation	Captive breeding program
Chytridiomycosis	Minimise the impacts of disease on the species	Investigation of species ecology

Monitoring actions

Regular monitoring of species abundance, extent and condition on the site will be conducted to determine population trends through time. The extent and severity of threats will also be monitored to assess the effectiveness of management actions.

Management actions will be adapted, added or removed over time in response to monitoring results, based on maximising the project's effectiveness.

Site 2: Jagungal Wilderness Area

Three locations along the western edge of the Jagungal Wilderness Area of Kosciuszko National Park.

Total site area (ha): 37,484.31

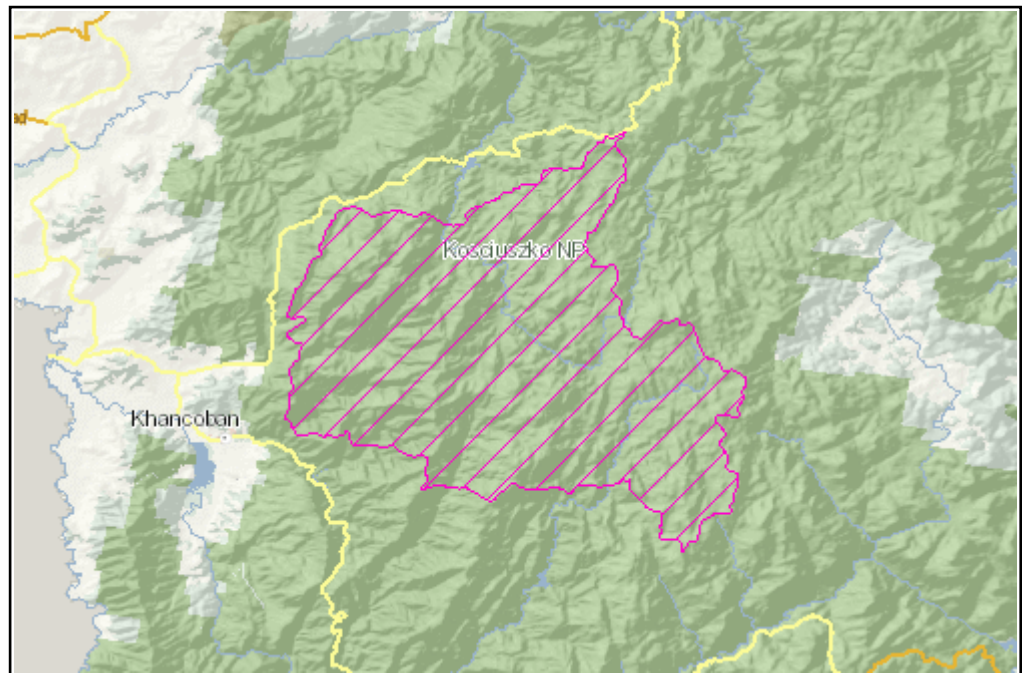
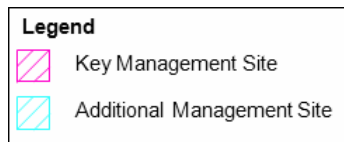
LGA: Snowy River; Tumbarumba

NPWS reserve: Kosciuszko National Park

Occurs on private land: No

Estimated population size: Unknown

Management site map



Management activities to protect the Southern Corroboree Frog at the site

Threat name	Objective	Action
Chytridiomycosis	Minimise the impacts of disease on the species	Fauna translocation
Chytridiomycosis	Prevent entry of disease to the site	Artificial frog ponds
Feral pigs	Reduce pest species densities and maintain at low levels	Pig control
Small population size	Augment extant wild population(s)	Investigation of species ecology
Small population size	Identify additional population(s)	Targeted survey

Monitoring actions

Regular monitoring of species abundance, extent and condition on the site will be conducted to determine population trends through time. The extent and severity of threats will also be monitored to assess the effectiveness of management actions.

Management actions will be adapted, added or removed over time in response to monitoring results, based on maximising the project's effectiveness.

Are you helping to save threatened species?

Tell us about the work you're doing, and find out more about our program - visit <http://www.environment.nsw.gov.au/savingourspecies>.