

## Prospect Nature Reserve Fire Management Strategy 2016

This strategy should be used in conjunction with aerial photography and field reconnaissance during incidents and the development of incident action plans.

This document is copyright for the purpose of study, research, criticism or review, as permitted under the Copyright Act, no part may be reproduced by any process without written permission.

This strategy is a relevant Plan under Section 38 (4) and Section 44 (4) of Rural Fires Act 1997.

The NSW National Parks and Wildlife Service is part of the Office of Environment and Heritage.

Published by the Office of Environment and Heritage, November 2016.  
Contact: PO Box 44, Sutherland NSW 1459.

ISBN 978 1 76039 570 0. CEH 2016/0684

Date Last Modified: 10/11/2016

nationalparks.nsw.gov.au

### Related Documents

National Parks and Wildlife Service Fire Management Manual, 2015-2016.
Sydney Catchment Authority Prospect Reservoir Fire Management Plan 20023-20067
WaterNSW Special Areas Strategic Plan of Management 2015.
Cumberland Plan Woodland Endangered Ecological Community Information, February 2004.
Sydney Coastal River Flat Forest Endangered Ecological Community Information, February 2004.
Cumberland Plan Recovery Plan, 2011.

### Fire Season Information

**Wildfires**

- The statutory wildfire season occurs between 1<sup>st</sup> March and 31<sup>st</sup> March.
- This may be extended if weather conditions lead to increased fire danger outside of this period.

**Prescribed Burning**

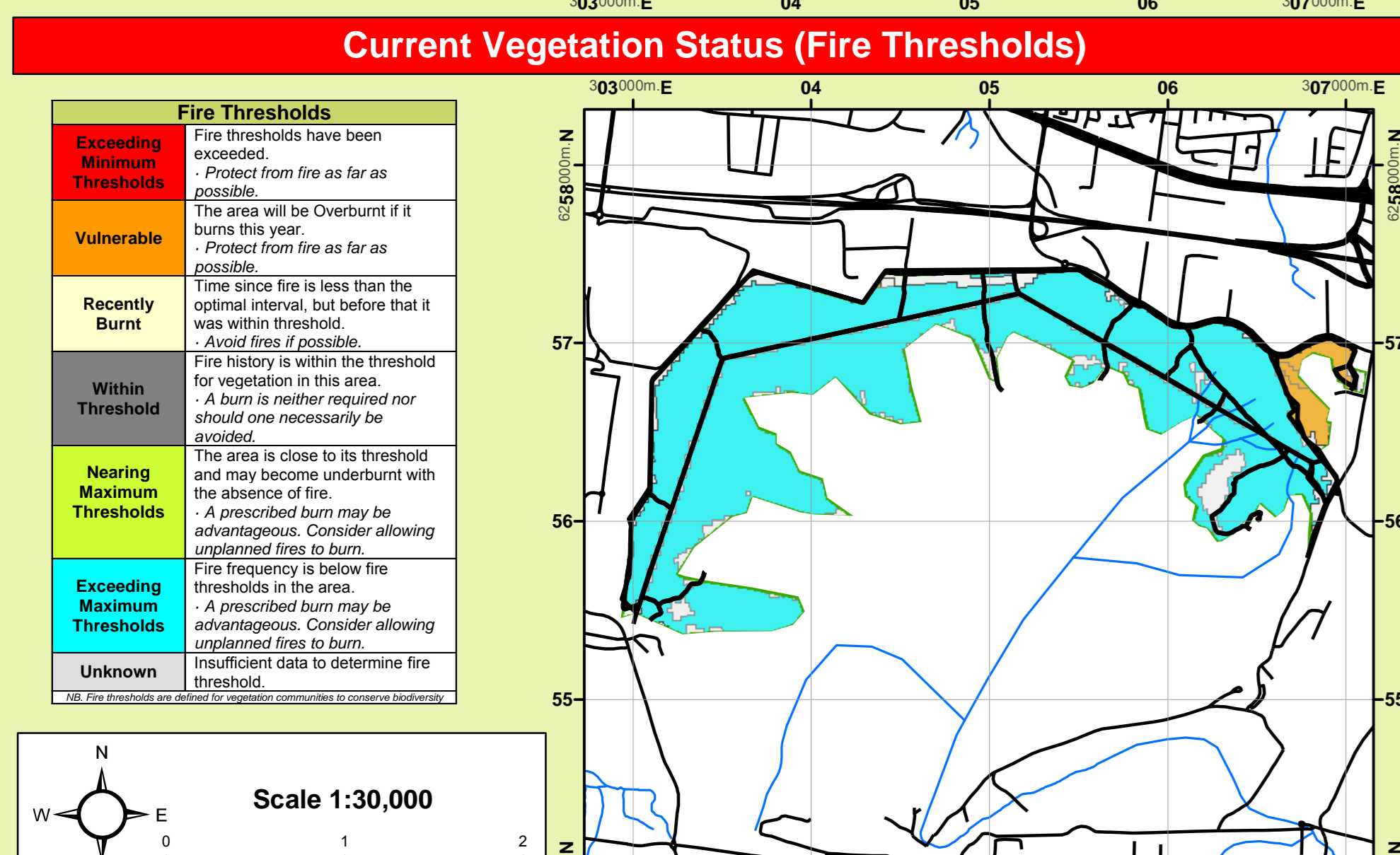
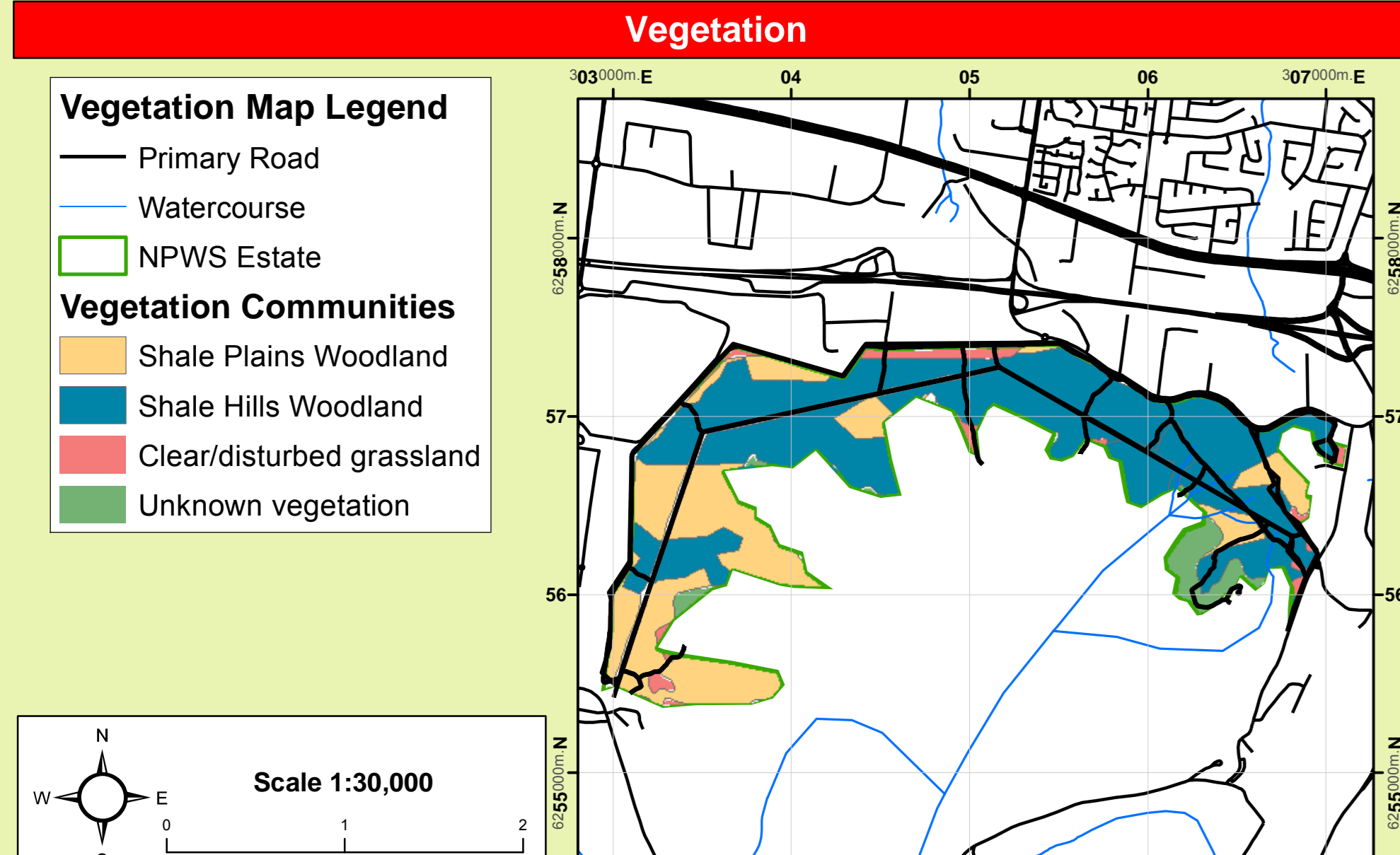
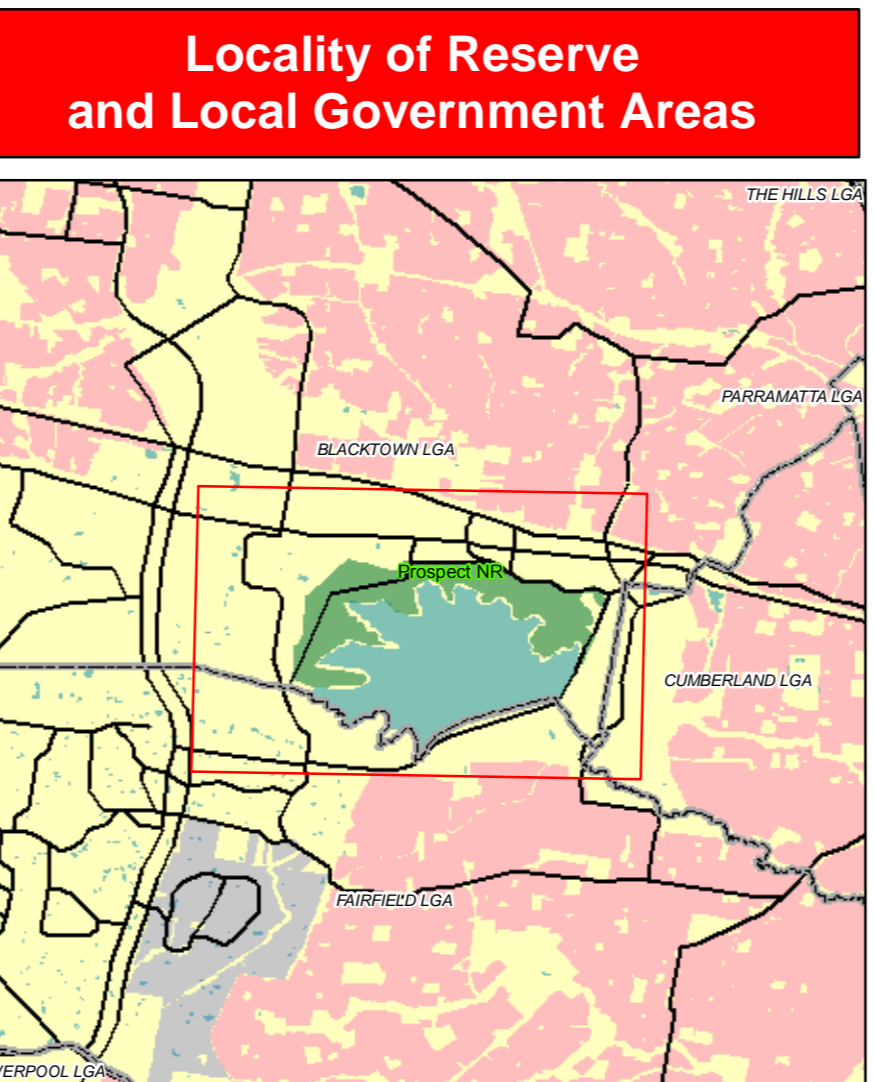
- Prescribed burning in this area is normally undertaken in Spring through to Autumn.

### Contact Information

Agency	Position / Location	Phone
Duty Officer	NSW National Parks & Wildlife Service	002 9573 9202
NSW National Parks & Wildlife Service	Cumberland Area Manager	0419 763 737
NSW National Parks & Wildlife Service	Fire Management Officer	0642 2001
NSW National Parks & Wildlife Service	Cumberland Area Office	4372 2100
NSW National Parks & Wildlife Service	NSW Regional Manager	0438 969 274
NSW National Parks & Wildlife Service	Business Hours	4734 7777
NSW National Parks & Wildlife Service	Emergency	000
NSW National Parks & Wildlife Service	Emergency	000
NSW National Parks & Wildlife Service	Emergency	000
NSW National Parks & Wildlife Service	Emergency	000
NSW National Parks & Wildlife Service	Emergency	000
NSW National Parks & Wildlife Service	Emergency	000
NSW National Parks & Wildlife Service	Emergency	000
NSW National Parks & Wildlife Service	Emergency	000

### Communications Information

Service	Channel	Location and Comments
NPWS VHF	134 Mugo Channel	• Good coverage
NPWS VHF	120 VHF Channel	• Available in most NSWB and RFS vehicles
UHF-CR	1-99	• Available in most NSWB and RFS vehicles
Modes	-	• Available in most NSWB and RFS vehicles
Phone GSM	-	• Good coverage



### Operational Guidelines

Refer to Strategy for Fire Management 2003 and Fire Management Manual 2005.

#### General

- The use of burning aircraft should support containment operations by dispersing thick smoke and suppressing fire.
- Ensure the equipment used will not reduce chemical or weed progress into the reserve.
- Ensure the equipment used will not reduce chemical or weed progress into the reserve.

#### Water Bombing

- Water bombing aircraft should be used as a last resort for suppression operations.
- Water bombing aircraft should be used as a last resort for suppression operations.

#### Aerial Ignition

- Aerial ignition may be used during backburning or fuel reduction operations.
- Aerial ignition may be used during backburning or fuel reduction operations.

#### Suppression Strategies

- As far as possible, undertake indirect, parallel or direct attack along existing control lines.
- As far as possible, undertake indirect, parallel or direct attack along existing control lines.

### Threatened Fauna Ecology

Label	Name	Fire Ecology
PA	Manna Gnatcatcher	Occurs in the primary woodland habitat. From discrete populations centered on relatively well-kept trees in old orchards and around garden ponds.
PA	Eastern Green Robin	Occurs in the primary woodland habitat. From discrete populations centered on relatively well-kept trees in old orchards and around garden ponds.
PA	White-winged Warbler	Occurs in the primary woodland habitat. From discrete populations centered on relatively well-kept trees in old orchards and around garden ponds.
PA	Yellow-faced Woodswallow	Occurs in the primary woodland habitat. From discrete populations centered on relatively well-kept trees in old orchards and around garden ponds.
PA	Pink-spurred Woodswallow	Occurs in the primary woodland habitat. From discrete populations centered on relatively well-kept trees in old orchards and around garden ponds.

### Threatened Flora Ecology

Label	Name	Fire Ecology
PA	Acacia pubescens	Increased fire frequency may threaten the species survival. Too frequent fire may reduce the seed bank.
PA	Pteris caerulea	Increased fire frequency may threaten the species survival. Too frequent fire may reduce the seed bank.
PA	Styphelia quadrilobata	Increased fire frequency may threaten the species survival. Too frequent fire may reduce the seed bank.
PA	Styphelia octocostata	Increased fire frequency may threaten the species survival. Too frequent fire may reduce the seed bank.

### Vegetation Communities and Biodiversity Thresholds

Regime	Vegetation Community	Biodiversity Thresholds*	Fire Behaviour	Year Burnt	Area (HA)
A	Cumberland Shale Plains Woodland	Minimum fire interval 4 - 6 yrs	Moderate to High	2003	19.68
		Maximum fire interval 15 - 20 yrs	Moderate to High	2004	35.5
B	Dry Sclerophyll Forest (shrub/scrub sub-formation)	Minimum fire interval 4 - 6 yrs	Moderate to High	2005	25.4
		Maximum fire interval 15 - 20 yrs	Moderate to High	2006	62.3
B	Forested Wetland	Minimum fire interval 4 - 6 yrs	Moderate to High	2013	7.2
		Maximum fire interval 15 - 20 yrs	Moderate to High	2015	0.5

### Resource Management Guidelines

#### Indigenous Cultural Heritage

- Indigenous Cultural Heritage is the physical remains of indigenous people, including rock art, archaeological sites, and other cultural heritage.
- Indigenous Cultural Heritage is the physical remains of indigenous people, including rock art, archaeological sites, and other cultural heritage.

#### Historic Site Management

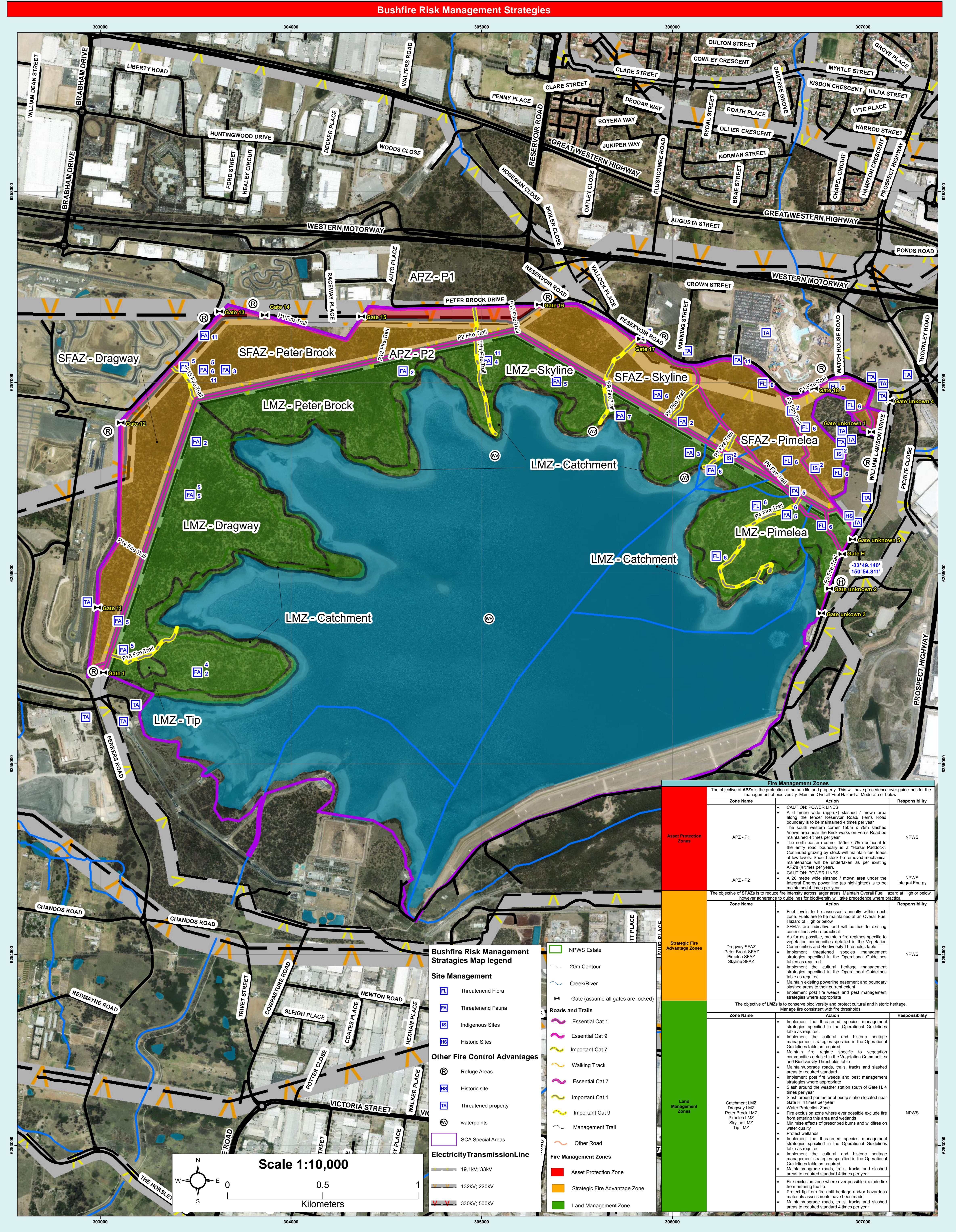
- Historic sites are areas of cultural significance, including archaeological sites, historical buildings, and other cultural heritage.
- Historic sites are areas of cultural significance, including archaeological sites, historical buildings, and other cultural heritage.

#### Threatened Fauna Management

- Threatened fauna species are those at risk of extinction or whose survival is in jeopardy.
- Threatened fauna species are those at risk of extinction or whose survival is in jeopardy.

#### Threatened Flora Management

- Threatened flora species are those at risk of extinction or whose survival is in jeopardy.
- Threatened flora species are those at risk of extinction or whose survival is in jeopardy.



### Bushfire Risk Management Strategies Map legend

Symbol	Description
[Green outline]	NPWS Estate
[Grey line]	20m Contour
[Blue line]	Creek/River
[Red line]	Essential Cat 1
[Yellow line]	Essential Cat 9
[Green line]	Important Cat 7
[Purple line]	Walking Cat 7
[Blue line]	Essential Cat 7
[Red line]	Important Cat 1
[Grey line]	Other Road
[Blue line]	Management Trail
[Blue line]	Other Road
[Blue line]	Electricity Transmission Line
[Red line]	19.1kV, 33kV
[Red line]	132kV, 220kV
[Red line]	330kV, 500kV

### Fire Management Zones

Zone Name	Action	Responsibility
APZ - P1	CAUTION POWER LINES A 6 metre wide (approx) slashed / mown area along the fence Reservoir Road. Fence Road boundary to be maintained 4 times per year. The south western corner 150m x 75m slashed mown area near the Brick works on Ferns Road be maintained 4 times per year.	NPWS
APZ - P2	CAUTION POWER LINES A 20 metre wide (approx) slashed / mown area under the Integral Energy power line (as highlighted) is to be maintained 4 times per year.	Integral Energy
LMZ - Catchment	The objective of LMZ is to conserve biodiversity and protect cultural and historic heritage. Manage fire consistent with fire thresholds.	NPWS
Catchment LMZ	Fire exclusion zone where possible exclude fire from entering the area and wetlands Minimize effects of prescribed burns and wildfires on water quality Protect wetlands Implement the threatened species management strategies specified in the Operational Guidelines table as required Implement the cultural and historic heritage management strategies specified in the Operational Guidelines table as required Implement the threatened species management strategies specified in the Operational Guidelines table as required Implement the cultural and historic heritage management strategies specified in the Operational Guidelines table as required Implement the threatened species management strategies specified in the Operational Guidelines table as required Implement the cultural and historic heritage management strategies specified in the Operational Guidelines table as required	NPWS