

Parma Creek Nature Reserve Fire Management Strategy June 2006

This map should be used in conjunction with topographic maps and other documents detailing the reserve and the development of incident action plans.

Copyright Department of Environment and Conservation. These data are not guaranteed to be free from error or omission. The Department of Environment and Conservation and its employees disclaim liability for any act done on the information in the data and any consequences that may result from its use.

Grid Interval 1000m
Australian Map Grid Zone 56

Please forward comments on this strategy to:
sc.fmp@environment.nsw.gov.au
or NPWS Nowra Area Office, PO Box 707, Nowra NSW 2541

Operational Guidelines - Parma Creek Nature Reserve

These guidelines are provided to assist fire management activities within the reserve. They are framed by current cooperative arrangements with other fire authorities, NPWS strategies for the management, reserve management plans, neighbours and other site-specific issues that need to be considered. Feedback on these matters is always appreciated and should be directed to NPWS Nowra Area, PO Box 707 Nowra NSW 2541.

Command and Control: The NPWS is responsible for fire management within the reserve. Any fire authority may initiate size-up and attack with advice to the NPWS upon initial fire sighting or report. See Contacts section for advice fire reports to or within the reserve. Class 1 fire suppression operations may remain under command of the initial attack agency following assessment and advice by NPWS.

Visitor Safety: Consider public safety within initial response operations (i.e. clearing likely visitor use areas and sites, warnings and information, on-site protection, closures or evacuation where instructed by Police).

Fire Suppression: Firefighter safety is paramount. Containment orders should consider using existing roads, trails, walking tracks and regularly burnt areas. Where possible to limit unnecessary damage, earthmoving equipment should be limited to brushing up existing tracks. In extreme fire conditions prevail, fall back to property protection of adjacent property.

Earthmoving Equipment: Except for immediate initial attack, the use of earthmoving equipment for fire suppression within the reserve requires NPWS approval. There are significant natural and cultural values at unnecessary risk from unplanned use of earthmoving equipment. Contact the NPWS if earthworks are required. ALL use of earthmoving equipment will be consistent with NPWS safety, operational and environmental guidelines.

Foam and Retardant Use: Avoid foam and retardant use within the reserve unless there is a significant necessary operational advantage. DO NOT use on or near watercourses, wetlands, rainforests or swampy areas. DO NOT use foams or retardants near water storages or supply infrastructure. Unless under emergency conditions always obtain permission before using rural water supplies / sources. Take care when tankers filling not to contaminate water sources.

Aerial Operations: Aerial operations should be briefed on location of transmission lines and other hazards in the area. Consider safety implications where aircraft will operate over adjacent dwellings, or operate from publicly accessible fireground sites. Aerial operations should be postponed or abandoned if there is a high risk of a storm moving through the area, or there is a significant wind change anticipated. The area is within a controlled airspace. Advise Nowra Military (HMAS Albatross) of likely scope of operations required. (02 442 1257)

Smoke Management: This reserve is adjacent to residential property and busy roads. Consider prompt advice to communities downwind and consider traffic management during fire suppression operations. Consider safety and health implications during Prescribed Burning operations. Notify nearby highway and airspace management agencies if a hazard is likely to be created.

Rehabilitation: Earthmoving equipment and other resources should be allocated to soil erosion control works and remedial restoration before standing down from fire operations.

Arson: Report ALL fires of unknown cause or suspected arson to Police via Fire Control. Protect likely ignition points or evidence. Report any suspicious activity on or near the fireground.

Locked Gates: Any NPWS locked gates within the reserve are fitted with standard key lockers and available from Fire Control. Report any missing or damaged locks via Fire Control or to NPWS. For public safety during fire operations, some gates may need to be left in closed position but not locked. Check back NPWS gates after operations. Where safe, leave farm gates 25-30m closed from.

Map Grid (zone 56) Datum for map grid shown is AGD 66. This will remain in use until the majority of map sheets covering the area are revised to the newer GDA datum. To approximately locate a map reference given in GDA to this map (AGD 66) move approximately 200 metres to the southward from the given grid reference. Conversely, to relay a grid reference from this map (AGD 66) to someone with a GDA map, give the reference of a point approximately 200m to the northeast of the position shown on this map.

Special site considerations

Wildfire: Where possible, protect hollow trees adjacent to control lines during fire suppression operations. Prepare control lines to avoid introducing fire to "habitat" trees during prescribed burning activities (also saves considerable "top-up" effort). Report all injured wildlife to NPWS or wildlife care organisations.

Rare or threatened plant species - known sites: Fireground control personnel should seek relevant information and brief all personnel involved in control line construction and suppression activities on the location of threatened species sites or habitats and appropriate actions to protect these sites - refer to relevant strategies table.

Cultural sites - known Aboriginal and Historic sites: Fireground control personnel should seek relevant information and brief all personnel involved in control line construction and suppression activities on the location of sites within the operational area and appropriate actions to protect these sites - refer to relevant strategies tables.

Fire Regimes - Vegetation

Identify in reserve biodiversity within the reserve the following fire regimes are indicated for vegetation types that may be present. The aim is for a range of areas with differing times since fire within intervals. Within fire regimes thresholds may be exceeded where necessary for asset protection purposes. Fire regimes in SFZs may have lower thresholds in order to provide a strategic advantage in containing wildfires. The below intervals are broad guidelines only and fire regimes for specific areas may need to be considered on a case by case basis. The vegetation types listed below are not all necessary present within the area covered by this Fire Management Strategy.

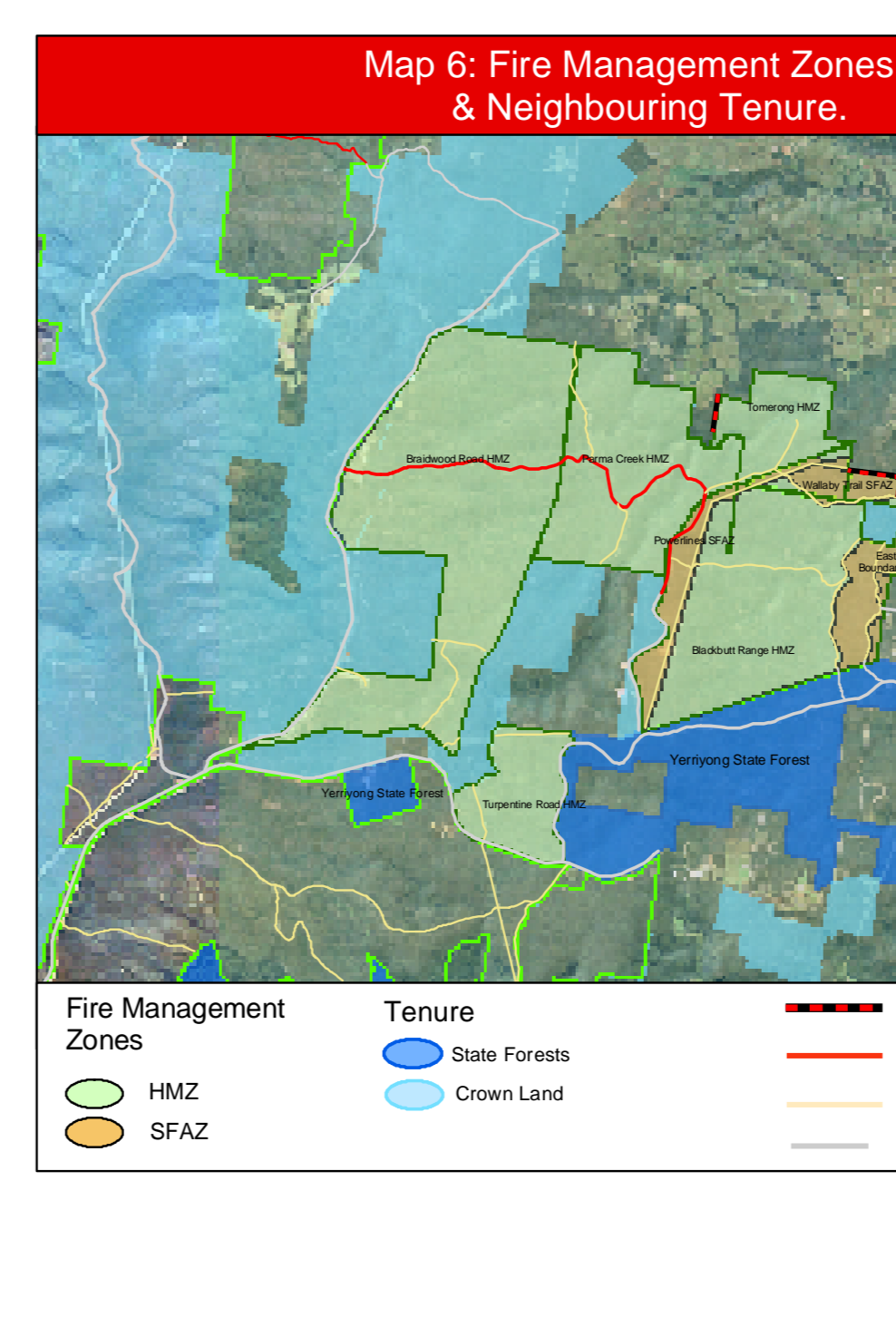
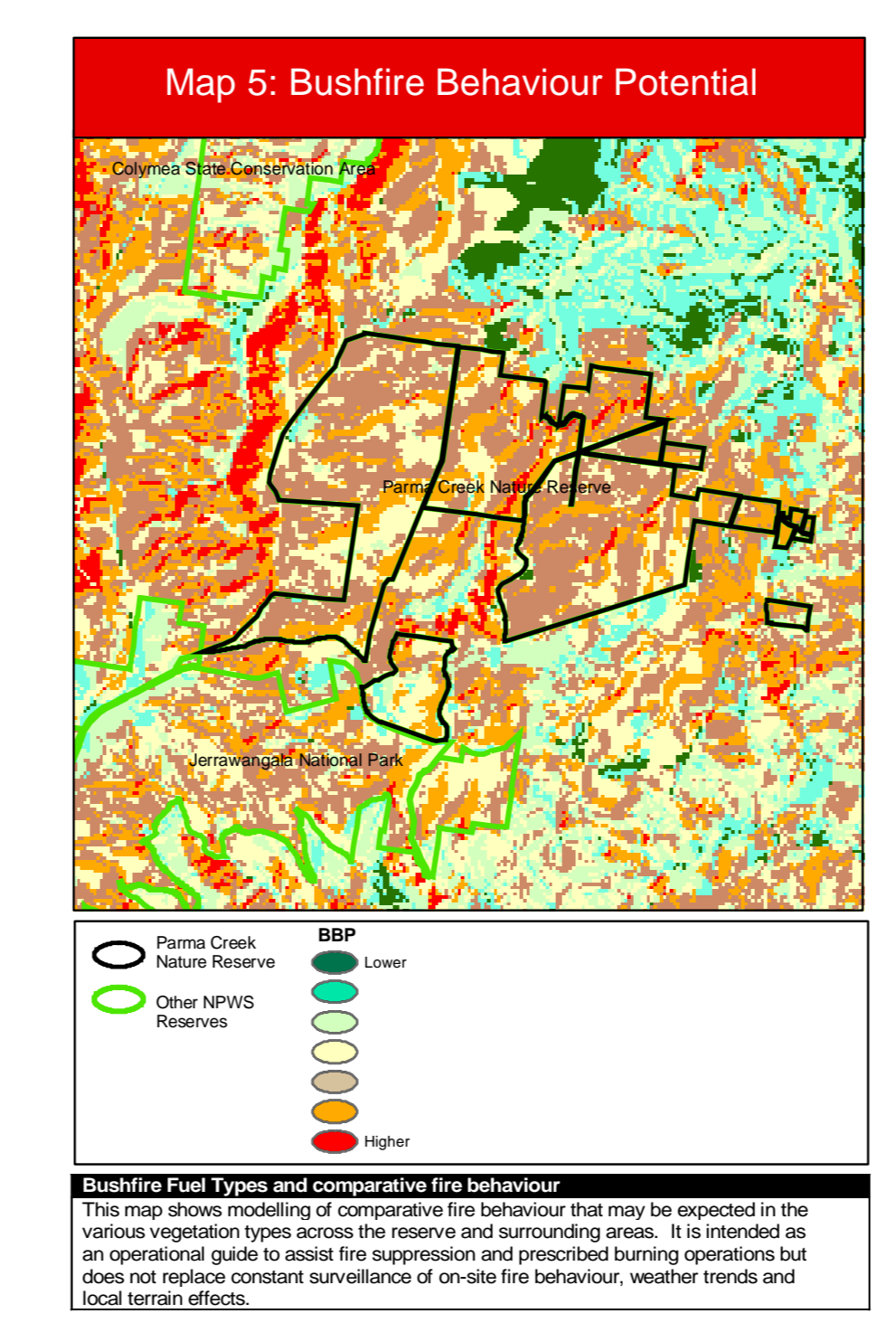
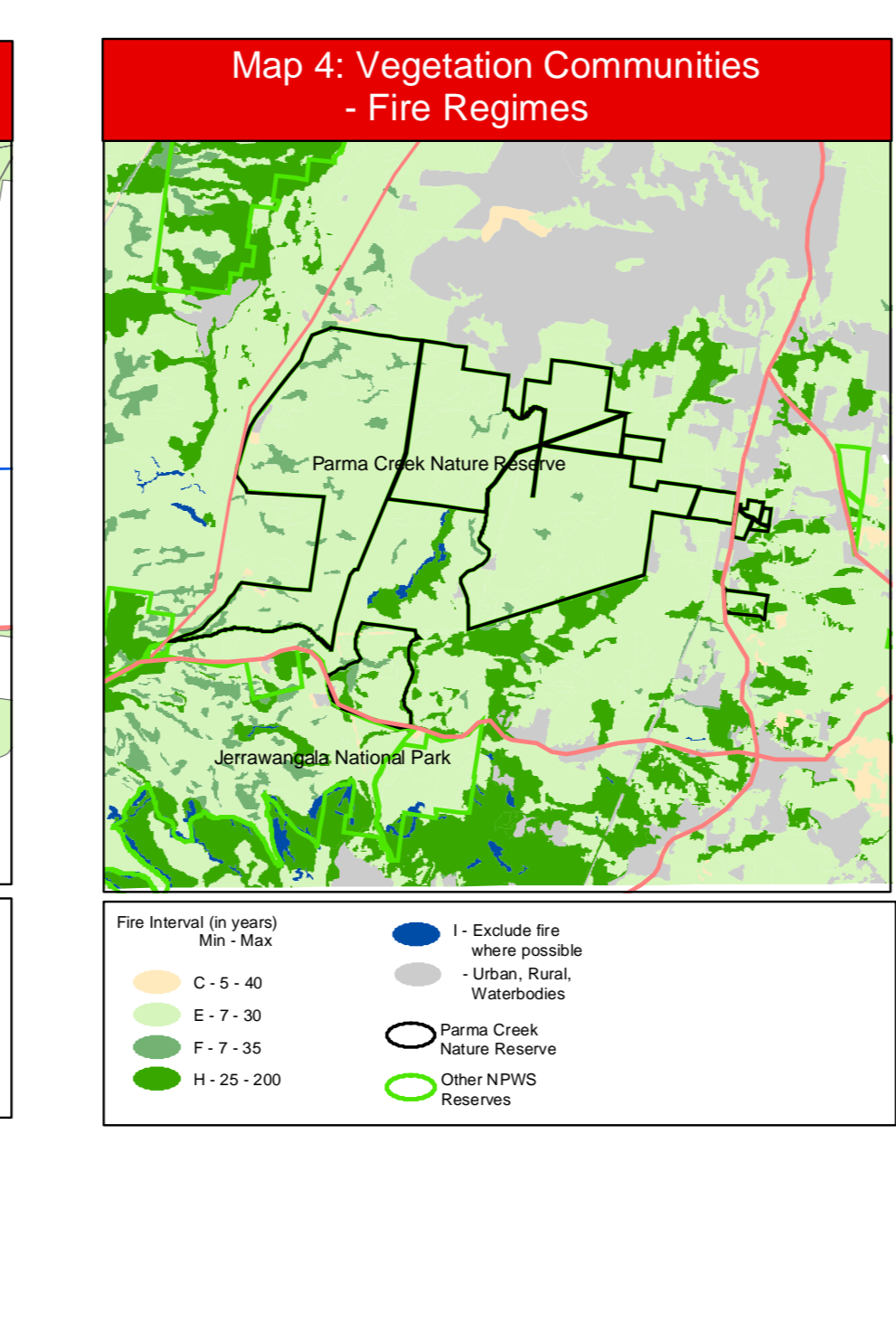
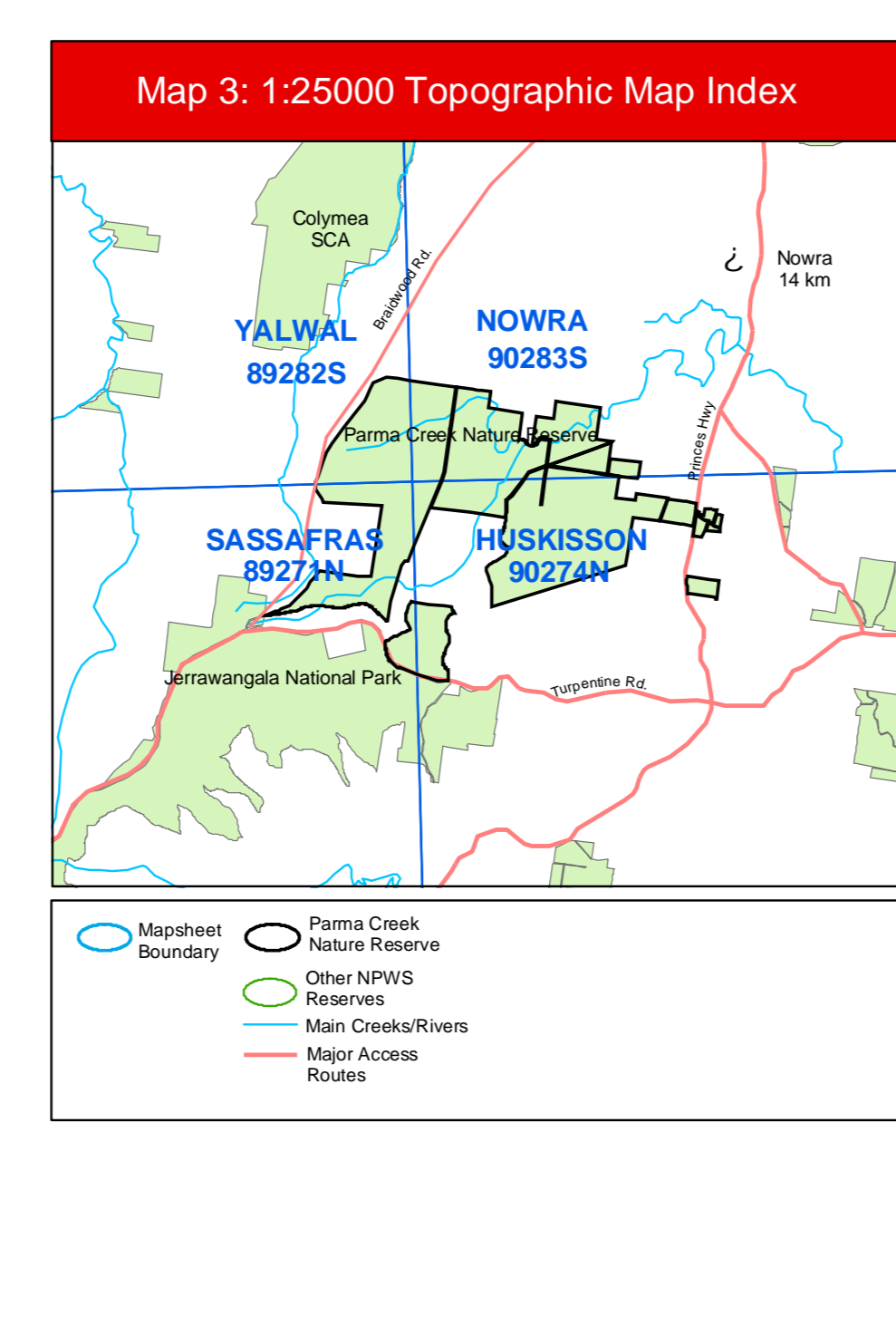
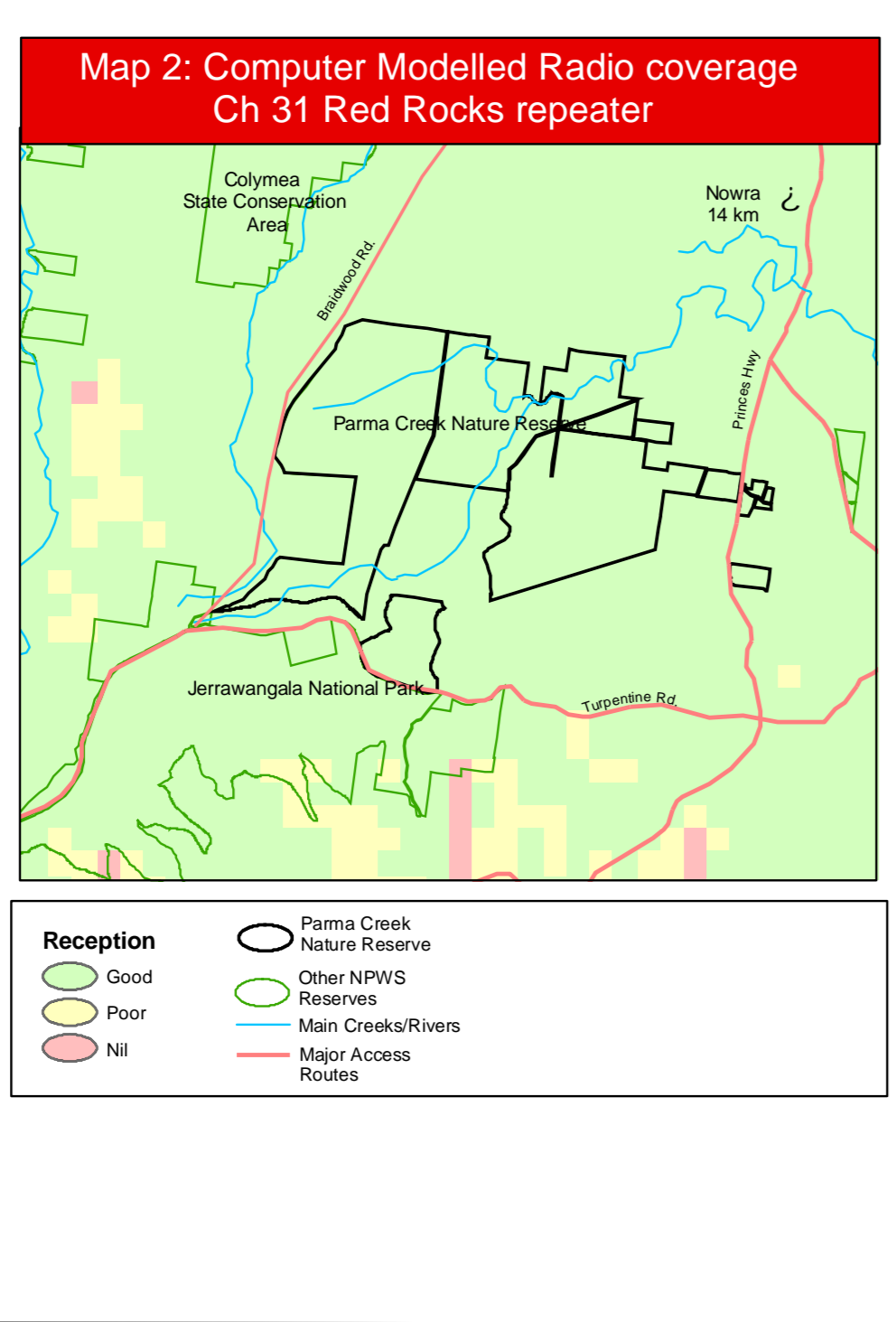
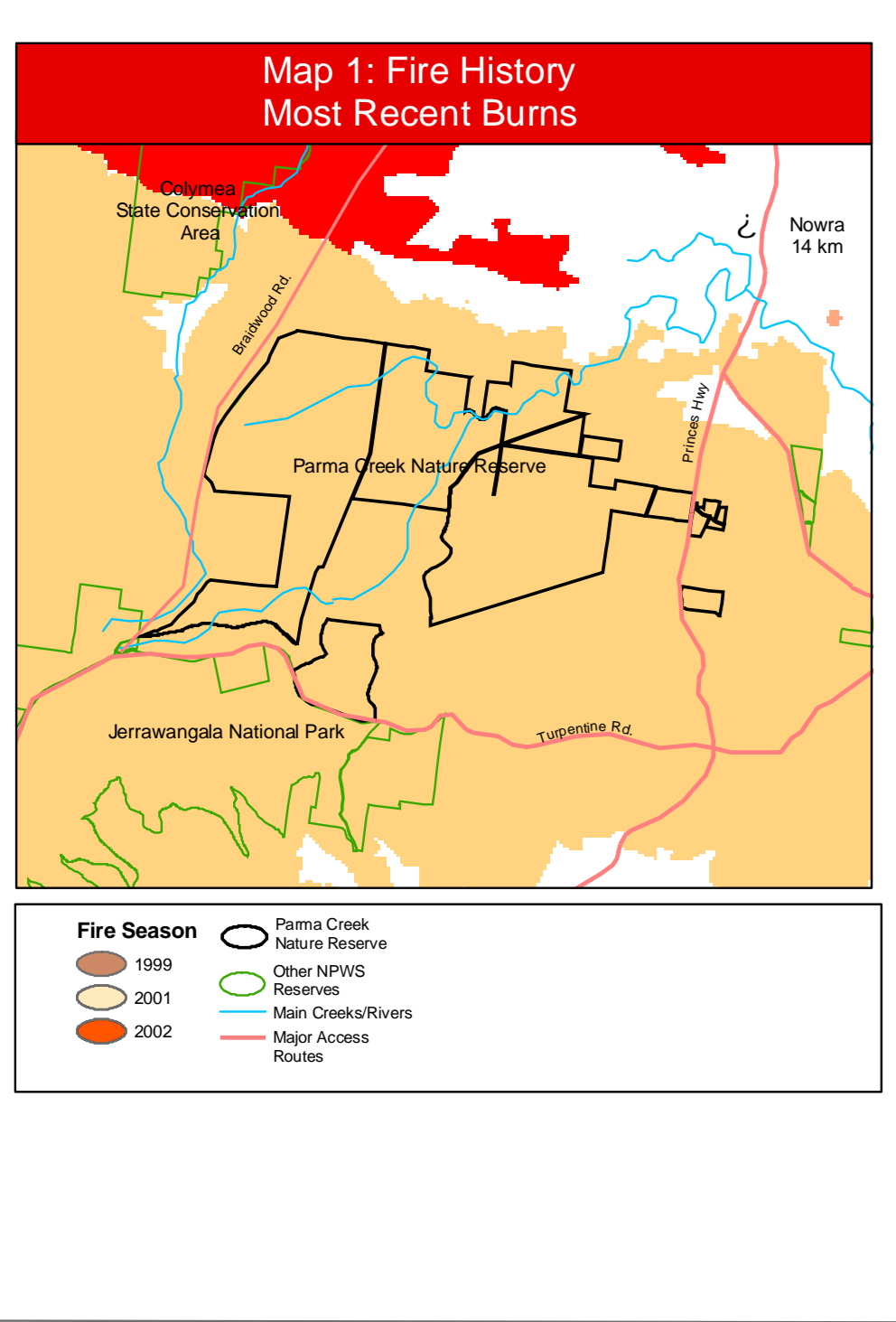
MapID	Vegetation type	Minimum fire interval	Maximum fire interval
A	Coastal complex, Woodland, grassy dry forest	5	30
B	Wetlands	5	30
C	Open forest, Woodland	5	40
D	Grass forest, Riparian forest, Coast Pine forest, Dry forest	5	50
E	Coastal Dune Scrub, Coastal Sands For	7	30
F	Coastal Dune Scrub, Coastal Sands For	7	30
G	Acacia Scrub, Shrubland, Grassland	8	30
H	Woodland, Grassland, Forest	20	200
I	Rainforest, Exotic Forest, Mangrove, M	Exclude fire	Exclude fire where possible
No	Rural, Urban, Wetlands	N/A	N/A

Contacts Information - Parma Creek Nature Reserve

Service	Contact	Location and Comments
NPWS - VHF	31	M Carbone's repair
NPWS - VHF (Fireground Comm)	43-44	17-18 - 5 Watt Channels
NPWS - VHF (Portable Receiver)	14	Channel 4 (now closed) not transportable.
NPWS / RFS (On-board Receiver)	14	Divert at Nowra / transportable. Full range of both channels and 12 other NPWS VHF RFS fire channels.
RFS - PAR - LHF	CH 27	Fisherman Paradise
CH 35	Boys State Forest	
CH 35	Boys State Forest	
CB - LHF	28	Forestry use
Acacia - VHF		As indicated on Site Ops
PHONE		Fire coverage available - Tetras
Mobile Phone - GSM		Fire coverage available - Tetras
Mobile Phone - GSM		Fire coverage available - Tetras
Satellite Phone		Available for deployment at Ulukulu and Nowra Area offices

Aboriginal Heritage Sites

MapID	Strategy	Site Type
AHC	Avoid all ground disturbance including the use of earthmoving machinery, handline construction and driving over sites.	Sites least affected by fire
T	Avoid water bombing, which may cause ground disturbance.	Sites at risk of disturbance by fire suppression operations, eg - burial sites, artefact scatters, middens.
T	Site may be buried by bushfire, backburn or firefighting without damage	



MapID	Threatened Flora and Fauna Fire Management Strategies	Species	Common	Species status
FL 1	No fire more than once every 10 years.	<i>Eucalyptus langleyi</i>	<i>Eucalyptus langleyi</i>	Vulnerable
FL 2	No slashing, thinning or tree removal.	<i>Eucalyptus sturgisiana</i>	<i>Eucalyptus sturgisiana</i>	Vulnerable
FL 3	No slashing, thinning or tree removal.	<i>Syzygium paniculatum</i>	<i>Syzygium paniculatum</i>	Vulnerable
FA 1	No slashing, thinning or tree removal.	<i>Conostachys rufus</i>	Eastern Pygmy-possum	Vulnerable
FA 2	Specific Requirements undetermined	<i>Antrozous melanotos</i>	Spotted-tailed Quoll	Vulnerable
FA 3	Specific Requirements undetermined	<i>Falsisphenia tasmanianensis</i>	Eastern Fatig Tree	Vulnerable
FA 4	No slashing, thinning or tree removal.	<i>Heteropis australis</i>	Giant Burrowing Frog	Vulnerable
FA 5	Specific Requirements undetermined	<i>Isodon denticulatus</i>	Southern Brown Bandicoot (eastern)	Endangered
FA 6	Specific Requirements undetermined	<i>Antrozous melanotos</i>	Spotted-tailed Quoll	Vulnerable
FA 7	No slashing, thinning or tree removal at these sites.	<i>Parus australis</i>	Yellow-bellied Gnat	Vulnerable
FA 8	No slashing, thinning or tree removal at these sites.	<i>Parus australis</i>	Yellow-bellied Gnat	Vulnerable
FA 9	No slashing, thinning or tree removal at these sites.	<i>Parus australis</i>	Yellow-bellied Gnat	Vulnerable
FA 10	No slashing, thinning or tree removal at these sites.	<i>Parus australis</i>	Yellow-bellied Gnat	Vulnerable
FA 11	No slashing, thinning or tree removal at these sites.	<i>Parus australis</i>	Yellow-bellied Gnat	Vulnerable
FA 12	No burning around known nesting sites at any time.	<i>Struthio melanotos</i>	Greater Broad-winged Bat	Vulnerable
FA 13	No slashing, thinning or tree removal at these sites.	<i>Tyto novaehollandiae</i>	Musked Owl	Vulnerable
FA 14	Specific Requirements undetermined	<i>Aluco striatus</i>	Powerful Owl	Vulnerable
FA 15	Specific Requirements undetermined	<i>Aluco striatus</i>	Powerful Owl	Vulnerable

* Specific Requirements undetermined - No specific fire requirements known at present, however the potential impact of firefighting chemicals and heavy machinery use should be considered and minimised where possible.

Source - Rural Fire Service, Threatened Species Guidelines for Hazard Reduction, an addendum.