



INFRASTRUCTURE

- STUDY AREA BOUNDARY
- RIVER or CREEK
- ROAD or HIGHWAY
- RAILWAY

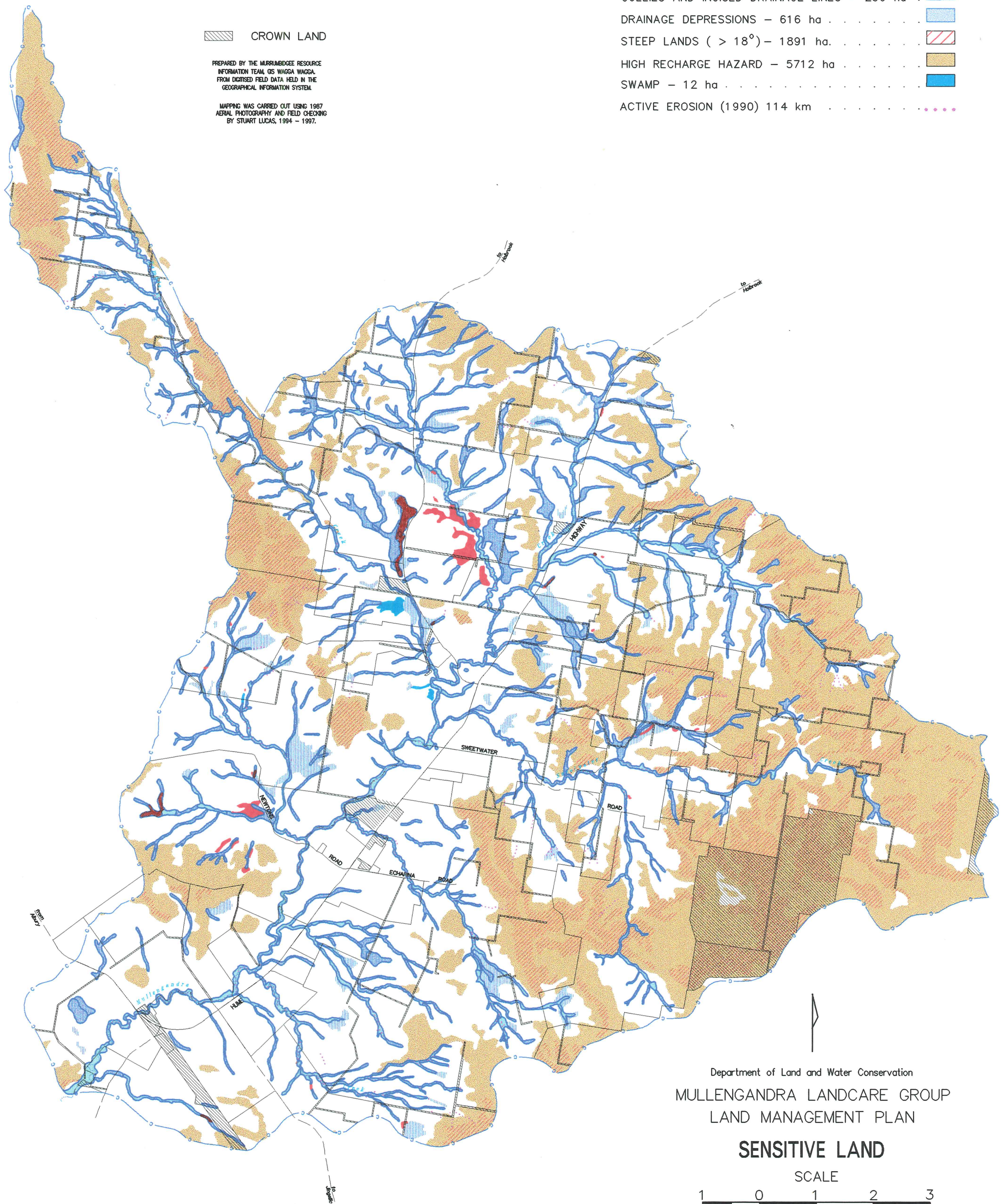
CROWN LAND

PREPARED BY THE MURRUMBIDGE RESOURCE INFORMATION TEAM, GS WAGGA WAGGA, FROM DIGITISED FIELD DATA HELD IN THE GEOGRAPHICAL INFORMATION SYSTEM.

MAPPING WAS CARRIED OUT USING 1987 AERIAL PHOTOGRAPHY AND FIELD CHECKING BY STUART LUCAS, 1994 - 1997.

SENSITIVE LANDS

- SALT OUTBREAK - 105 ha
- AREAS AFFECTED BY WATERLOGGING - 874 ha
- GULLIES AND INCISED DRAINAGE LINES - 230 ha
- DRAINAGE DEPRESSIONS - 616 ha
- STEEP LANDS (> 18°) - 1891 ha
- HIGH RECHARGE HAZARD - 5712 ha
- SWAMP - 12 ha
- ACTIVE EROSION (1990) 114 km



Department of Land and Water Conservation
MULLENGANDRA LANDCARE GROUP
LAND MANAGEMENT PLAN

SENSITIVE LAND



Kilometres

