

**Northern Rivers Region  
Mt Warning NP, Wollumbin NP & SCA,  
Hattons Bluff NR & Mt Nullum NR  
Fire Management Strategy (Type 2)  
2006**

This strategy should be used in conjunction with aerial photography and field reconnaissance during incidents and the development of incident action plans.

These data are not guaranteed to be free from error or omission. The NSW National Parks and Wildlife Service and its employees assume liability for any loss or damage to the information in this data and any consequences of such loss or omission.

This document is copyright. Apart from any fair dealing for the purpose of study, research criticism or review, as permitted under the Copyright Act, no part may be reproduced by any process without written permission.

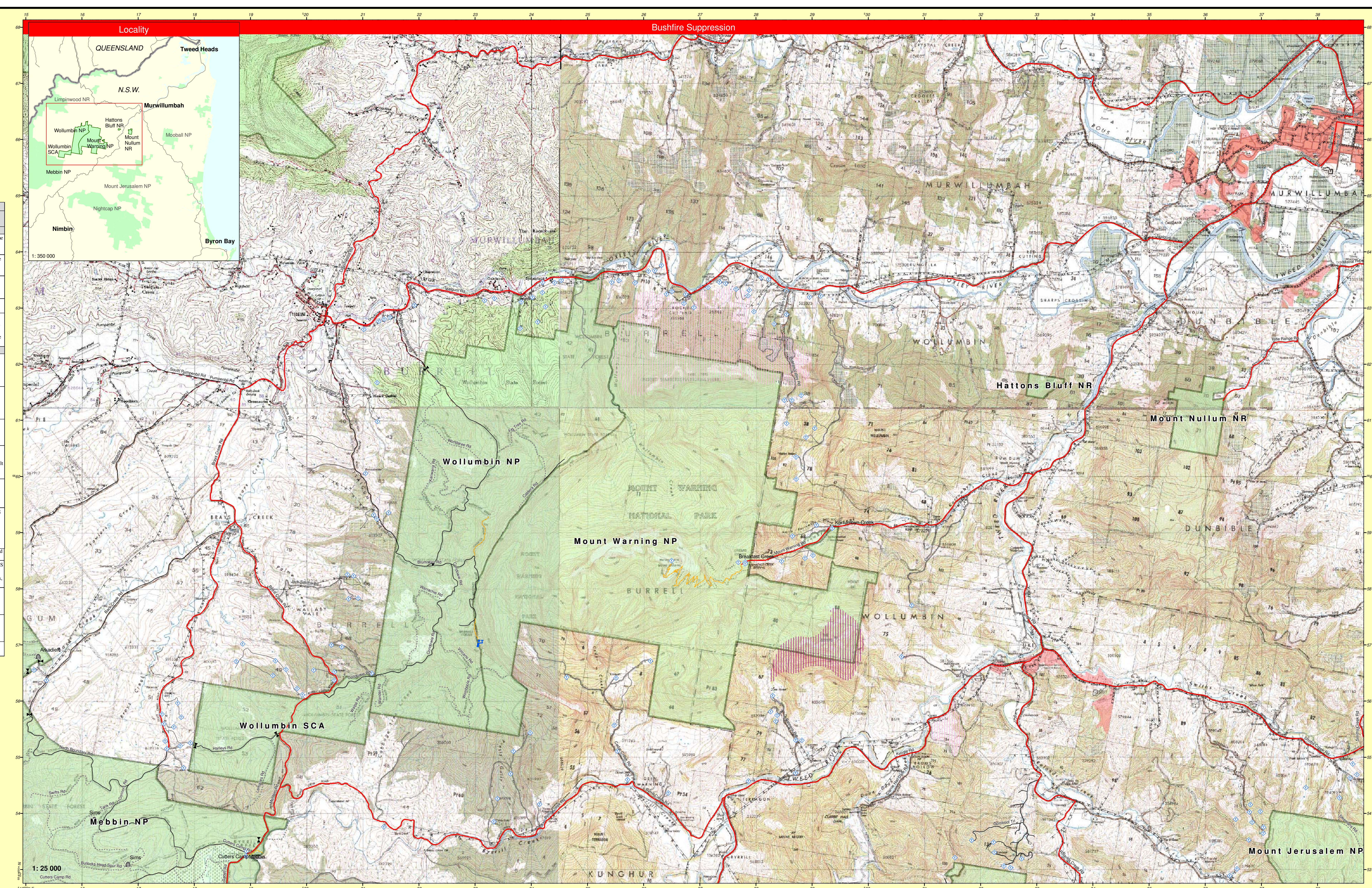
The NSW National Parks and Wildlife Service is part of the Department of Environment and Conservation.

Published by the Department of Environment and Conservation (NSW), June 2006

Contact: NSW National Parks and Wildlife Service, Northern Rivers Region, PO Box 856 Alstonville 2477.

ISBN 1 74137 465 0 DEC Number: 2006/103 Last Updated: 19 June 2006

This strategy is a relevant Plan under Section 38 (4) and Section 44 (4) of Rural Fires Act 1997.



**Strategy Information**

**Fire Season Information**

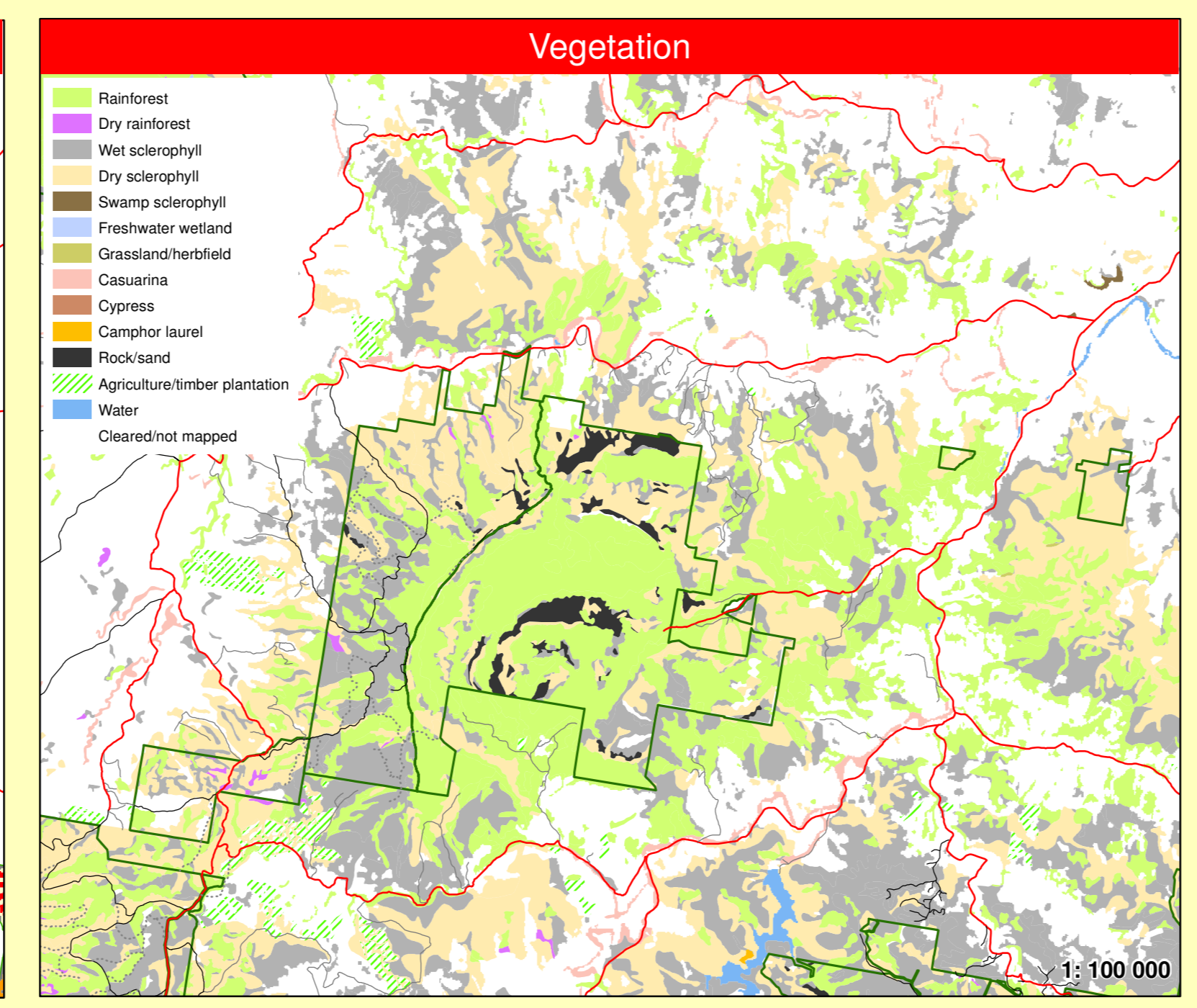
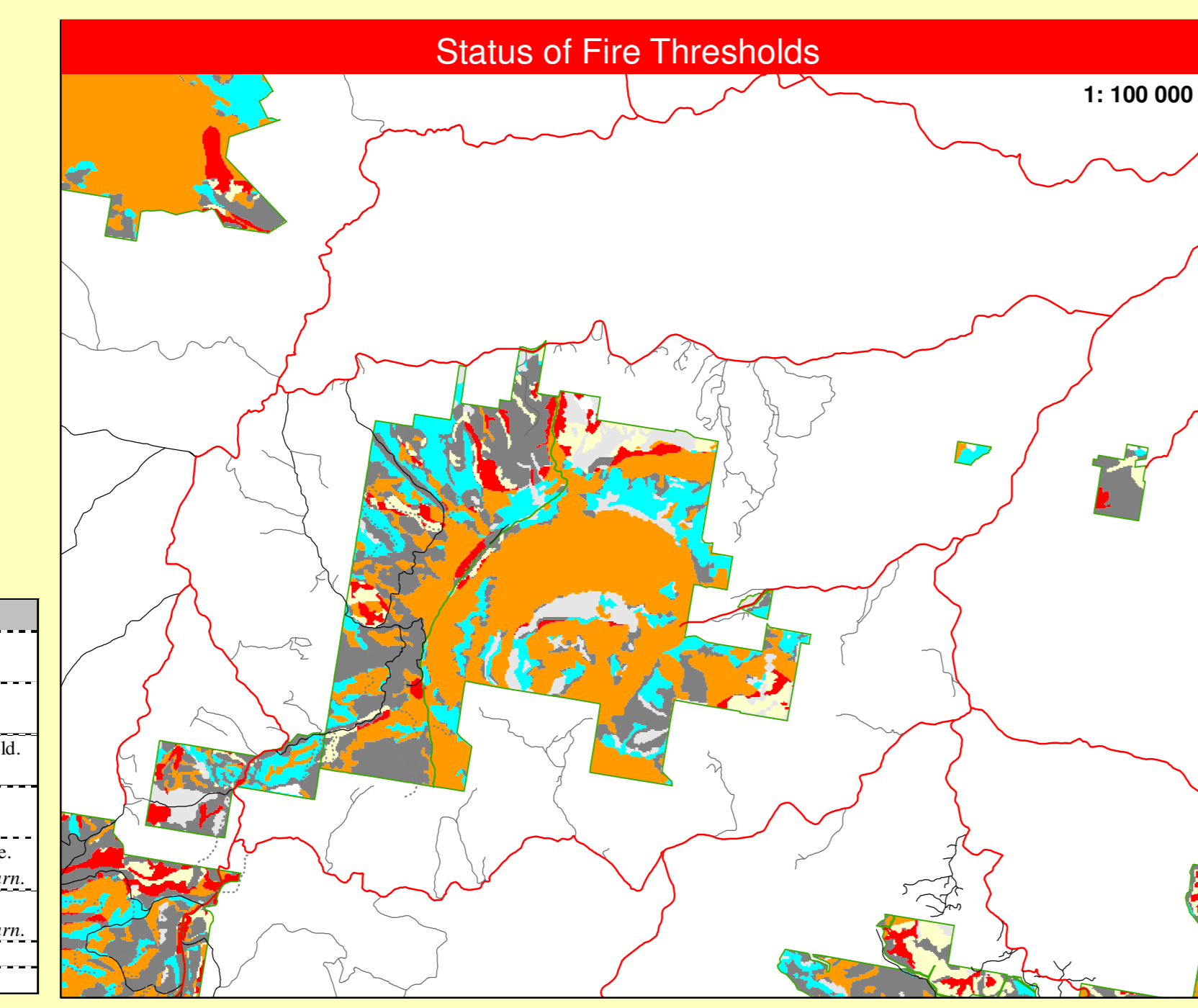
- Have been known to start as early as late August, but usually the potential for a large fire event is greatest between October and December. This period may extend into January in more severe years.
- General season is Autumn to Late Winter. Burning is possible in early Spring but not desirable on a regular basis from an ecological or tourism point of view.

**Suppression Strategies**

Current FDR	Forecast FDR	Suppression Strategies
Low - Mod	Low - Mod	<ul style="list-style-type: none"> <li>Undertake direct, parallel or indirect attack along existing containment lines.</li> <li>Where practicable consider maximising the fire area in accordance with the requirements of any proposed prescribed burns.</li> </ul>
Low - Mod	>> High	<ul style="list-style-type: none"> <li>In order to minimise the fire area and secure the flanks as soon as possible, undertake direct, parallel or indirect attack along the closest containment lines.</li> <li>Pay particular attention to the flank on the next predicted down wind side.</li> </ul>
High	All	<ul style="list-style-type: none"> <li>Undertake indirect attack along existing or newly constructed containment lines.</li> <li>Secure and deepen containment lines along the next predicted downwind side of the fire.</li> <li>If applicable consider broader than normal containment strategies to avoid wasted effort and high risk of failure.</li> </ul>
All	All	<ul style="list-style-type: none"> <li>Ensure there is sufficient time to secure containment lines prior to the fire impacting upon them otherwise fall back to the next potential line.</li> </ul>

**Contact Information**

Agency	Position / Location	Phone
NPWS	NRR Regional Office - Alstonville	6627 0200
	Tweed Area Office	6670 8600
	Tweed Area Depot	6672 8153
	Aboriginal Heritage Conservation Officer	6627 0205
	Duty Officer	0500 500 521
Tweed Fire Control Centre		6672 7888
	All emergency services	000
NSW Fire Brigade	Murwillumbah - General business	6672 8305
Police	Police Assistance Line	131444
	Murwillumbah	6672 9499
Ambulance	All other bookings	131 235
	Casino Memorial Hospital	6662 2111
Hospital	Lismore Base Hospital	6621 8000
	Murwillumbah	6670 2460
SES	Emergencies	132 500
	Tweed Shire Council	6670 2400
Council		(AH) 1800 818 326
	Country Energy	132 080 / 132 356



**Index**

**Risk Management Information**

**Fire Management Zones**

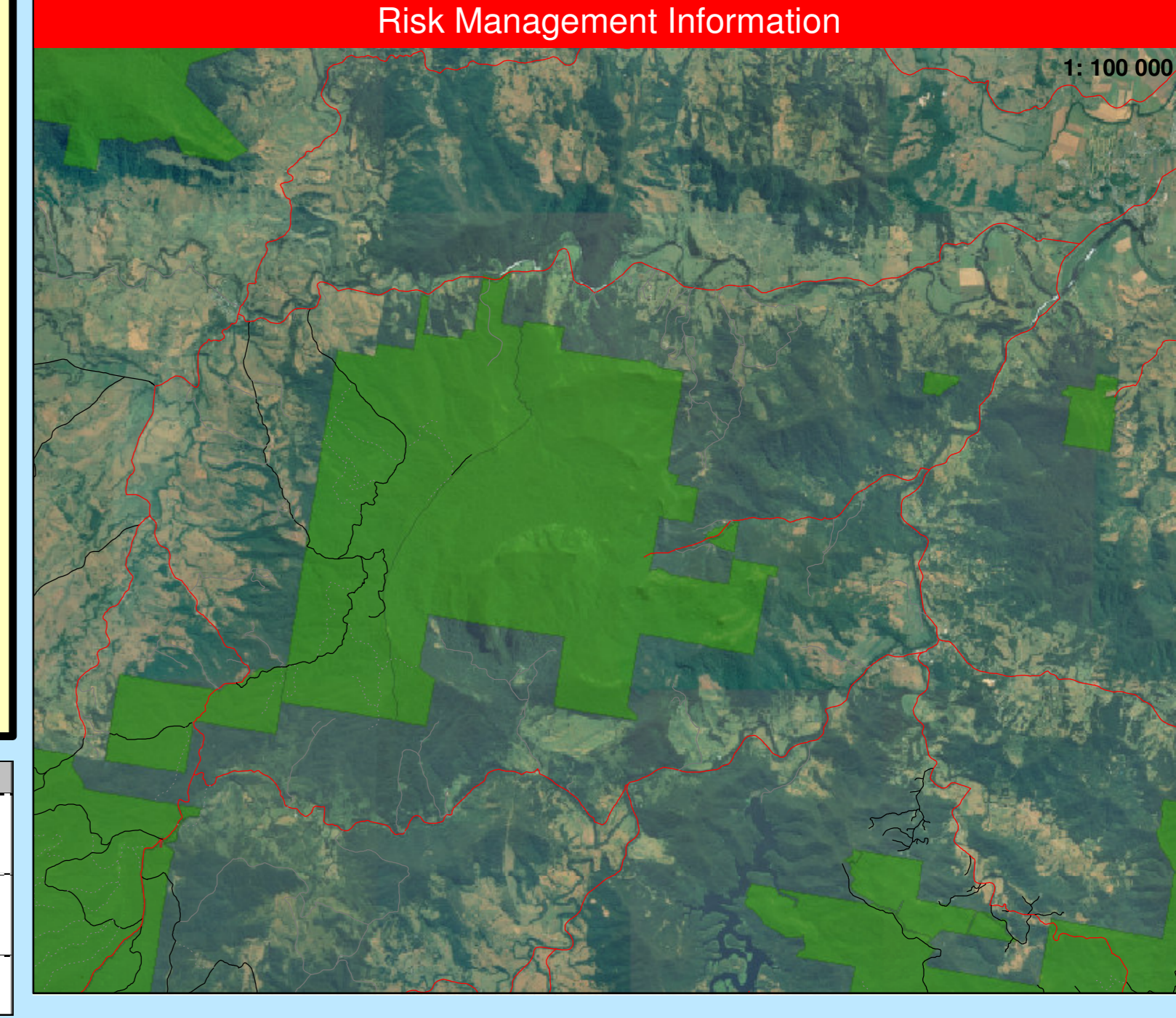
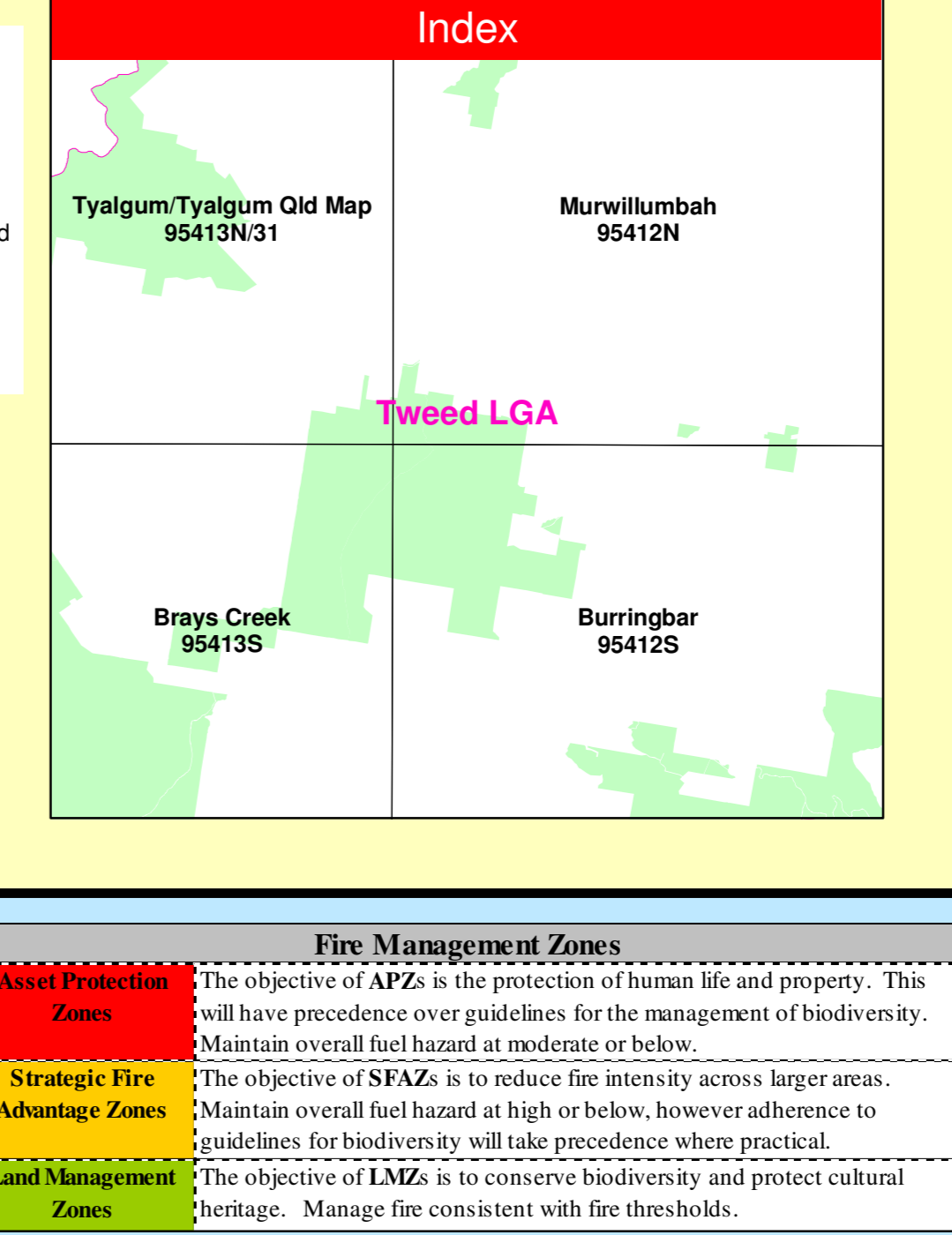
**Fire Thresholds**

**Strategic Fire Advantage Zones**

**Land Management Zones**

**Communications Information**

Service	Channel	Location and Comments
NPWS - VHF	8	Mount Nandi
NPWS - VHF (Fireground Comms)	40	Fireground chat channel (single frequency) monitors channel 8
NPWS - VHF (Portable Repetiter)	13	Blue Code. Stored at Kyogle Depot / transportable.
RFS - PMR - UHF	50	Mount Nandi
	37	Burringbar
	89	Springbrook
CB - UHF	-	To be confirmed with RFS brigade captain on the day.
Aircraft - VHF	125.45 MHz	Or as directed by Incident Controller or Air Operations.
Mobile Phone - CDMA	Partial	Coverage varies but generally poor.



**Fire Thresholds**

<b>Overburnt</b>	Fire thresholds have been exceeded.
<b>Vulnerable</b>	Protect from fire as far as possible. The area will be Overburnt if a burn this year.
<b>Recently Burnt</b>	Protect from fire as far as possible. Time since fire is less than the optimum interval, but before that it was within threshold.
<b>Within Threshold</b>	Avoid fires if possible. The history is within the threshold for vegetation in this area.
<b>Almost Underburnt</b>	A burn is neither required nor should one necessarily be avoided. The area is close to its threshold and may become underburnt with the absence of fire.
<b>Underburnt</b>	Prescribed burns may be advantageous. Consider allowing unplanned fires to burn. Fire frequency is below fire thresholds in the area.
<b>Unknown</b>	Prescribed burns may be advantageous. Consider allowing unplanned fires to burn. Insufficient data to determine fire threshold.

NR Fire thresholds are defined for vegetation communities to conserve biodiversity.