

**Operational Guidelines - Morton NP (Central) & Morton SCA**

These guidelines are provided to assist fire management activities within the reserves. They are based on current operational arrangements with the fire agencies, NPSV, and other agencies. Fire management activities in these reserves are managed in accordance with the fire management plans, objectives and other strategic documents that are in place. It is the responsibility of the fire agencies to ensure that fire management activities are conducted in accordance with the fire management plans, objectives and other strategic documents that are in place.

**Command and Control:** The NPSV is responsible for fire management within the reserves. Any fire agency personnel who are involved in fire management activities must follow the fire management plans, objectives and other strategic documents that are in place. The fire management plans, objectives and other strategic documents that are in place are the basis for all fire management activities.

**Fire Suppression:** Fire suppression activities should be conducted in accordance with the fire management plans, objectives and other strategic documents that are in place. Fire suppression activities should be conducted in a safe and efficient manner and should be conducted in accordance with the fire management plans, objectives and other strategic documents that are in place.

**Fire Prevention:** Fire prevention activities should be conducted in accordance with the fire management plans, objectives and other strategic documents that are in place. Fire prevention activities should be conducted in a safe and efficient manner and should be conducted in accordance with the fire management plans, objectives and other strategic documents that are in place.

**Fire Investigation:** Fire investigation activities should be conducted in accordance with the fire management plans, objectives and other strategic documents that are in place. Fire investigation activities should be conducted in a safe and efficient manner and should be conducted in accordance with the fire management plans, objectives and other strategic documents that are in place.

**Fire Training:** Fire training activities should be conducted in accordance with the fire management plans, objectives and other strategic documents that are in place. Fire training activities should be conducted in a safe and efficient manner and should be conducted in accordance with the fire management plans, objectives and other strategic documents that are in place.

**Fire Safety:** Fire safety activities should be conducted in accordance with the fire management plans, objectives and other strategic documents that are in place. Fire safety activities should be conducted in a safe and efficient manner and should be conducted in accordance with the fire management plans, objectives and other strategic documents that are in place.

**CONTACT INFORMATION**

**Emergency Call - Fire, Ambulance, Police**

Call **000** for Emergency Services

**National Parks & Wildlife Service NSW (Dept. Environment & Climate Change)**

Emergency Contact: 1800 829 104  
Business Hours: 0830-1630 Mon-Fri

**Nova's Fire Station**  
Emergency Calls: 4423 2170  
After Hours: 4423 1300  
Nova's Fire Station  
South Coast Regional Office  
55 Graham St, Nowra NSW 2541

**Rural Fire Service**  
Nowra Fire Station: 4423 2170  
Shoalhaven Fire Station: 4423 2170  
Morton State Fire Station: 4423 2170

**NSW Fire Brigades**  
Bundanoon Fire Station: 4883 6333  
Morton State Fire Station: 4886 1298  
Nova's Fire Station: 4423 2170

**Local Government**  
Shoalhaven City Council: 4423 3111  
Shoalhaven City Council (After Hours): 4423 3100  
Nearest Hospitals: 4418 2734  
Shoalhaven Hospital (Nowra): 4421 3111

**Land Management Zones - LMGs**

| Zone | Description           | Common Name           | Special Status |
|------|-----------------------|-----------------------|----------------|
| 1    | Open Forest           | Open Forest           | Variable       |
| 2    | Cool Temperate Forest | Cool Temperate Forest | Variable       |
| 3    | Open Forest           | Open Forest           | Variable       |
| 4    | Open Forest           | Open Forest           | Variable       |
| 5    | Open Forest           | Open Forest           | Variable       |
| 6    | Open Forest           | Open Forest           | Variable       |
| 7    | Open Forest           | Open Forest           | Variable       |
| 8    | Open Forest           | Open Forest           | Variable       |
| 9    | Open Forest           | Open Forest           | Variable       |
| 10   | Open Forest           | Open Forest           | Variable       |
| 11   | Open Forest           | Open Forest           | Variable       |
| 12   | Open Forest           | Open Forest           | Variable       |
| 13   | Open Forest           | Open Forest           | Variable       |
| 14   | Open Forest           | Open Forest           | Variable       |
| 15   | Open Forest           | Open Forest           | Variable       |
| 16   | Open Forest           | Open Forest           | Variable       |
| 17   | Open Forest           | Open Forest           | Variable       |
| 18   | Open Forest           | Open Forest           | Variable       |
| 19   | Open Forest           | Open Forest           | Variable       |
| 20   | Open Forest           | Open Forest           | Variable       |
| 21   | Open Forest           | Open Forest           | Variable       |
| 22   | Open Forest           | Open Forest           | Variable       |
| 23   | Open Forest           | Open Forest           | Variable       |
| 24   | Open Forest           | Open Forest           | Variable       |
| 25   | Open Forest           | Open Forest           | Variable       |
| 26   | Open Forest           | Open Forest           | Variable       |
| 27   | Open Forest           | Open Forest           | Variable       |
| 28   | Open Forest           | Open Forest           | Variable       |
| 29   | Open Forest           | Open Forest           | Variable       |
| 30   | Open Forest           | Open Forest           | Variable       |
| 31   | Open Forest           | Open Forest           | Variable       |
| 32   | Open Forest           | Open Forest           | Variable       |
| 33   | Open Forest           | Open Forest           | Variable       |
| 34   | Open Forest           | Open Forest           | Variable       |
| 35   | Open Forest           | Open Forest           | Variable       |
| 36   | Open Forest           | Open Forest           | Variable       |
| 37   | Open Forest           | Open Forest           | Variable       |
| 38   | Open Forest           | Open Forest           | Variable       |
| 39   | Open Forest           | Open Forest           | Variable       |
| 40   | Open Forest           | Open Forest           | Variable       |
| 41   | Open Forest           | Open Forest           | Variable       |
| 42   | Open Forest           | Open Forest           | Variable       |
| 43   | Open Forest           | Open Forest           | Variable       |
| 44   | Open Forest           | Open Forest           | Variable       |
| 45   | Open Forest           | Open Forest           | Variable       |
| 46   | Open Forest           | Open Forest           | Variable       |
| 47   | Open Forest           | Open Forest           | Variable       |
| 48   | Open Forest           | Open Forest           | Variable       |
| 49   | Open Forest           | Open Forest           | Variable       |
| 50   | Open Forest           | Open Forest           | Variable       |

**Fire Management Strategy Information**

**Fire Management Strategy - Morton NP (Central) & Morton SCA**

The fire management strategy for Morton NP (Central) & Morton SCA is based on the fire management plans, objectives and other strategic documents that are in place. The fire management strategy is designed to protect the reserve from fire and to manage fire in a safe and efficient manner. The fire management strategy is based on the fire management plans, objectives and other strategic documents that are in place.

**Fire Management Strategy - Morton NP (Central) & Morton SCA**

The fire management strategy for Morton NP (Central) & Morton SCA is based on the fire management plans, objectives and other strategic documents that are in place. The fire management strategy is designed to protect the reserve from fire and to manage fire in a safe and efficient manner. The fire management strategy is based on the fire management plans, objectives and other strategic documents that are in place.

**Fire Management Strategy - Morton NP (Central) & Morton SCA**

The fire management strategy for Morton NP (Central) & Morton SCA is based on the fire management plans, objectives and other strategic documents that are in place. The fire management strategy is designed to protect the reserve from fire and to manage fire in a safe and efficient manner. The fire management strategy is based on the fire management plans, objectives and other strategic documents that are in place.

**Fire Management Strategy - Morton NP (Central) & Morton SCA**

The fire management strategy for Morton NP (Central) & Morton SCA is based on the fire management plans, objectives and other strategic documents that are in place. The fire management strategy is designed to protect the reserve from fire and to manage fire in a safe and efficient manner. The fire management strategy is based on the fire management plans, objectives and other strategic documents that are in place.

**Fire Management Strategy - Morton NP (Central) & Morton SCA**

The fire management strategy for Morton NP (Central) & Morton SCA is based on the fire management plans, objectives and other strategic documents that are in place. The fire management strategy is designed to protect the reserve from fire and to manage fire in a safe and efficient manner. The fire management strategy is based on the fire management plans, objectives and other strategic documents that are in place.

**Fire Management Strategy - Morton NP (Central) & Morton SCA**

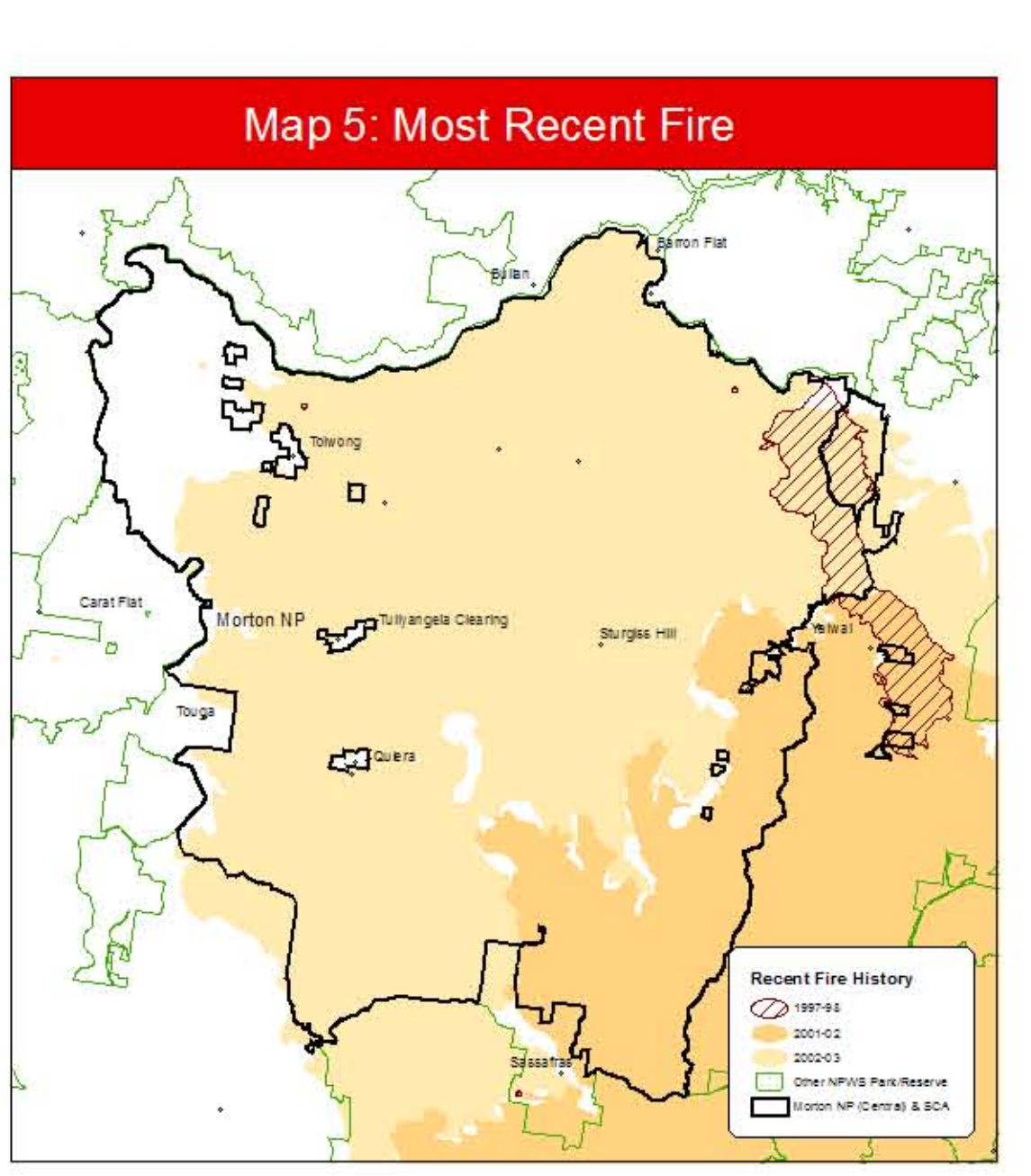
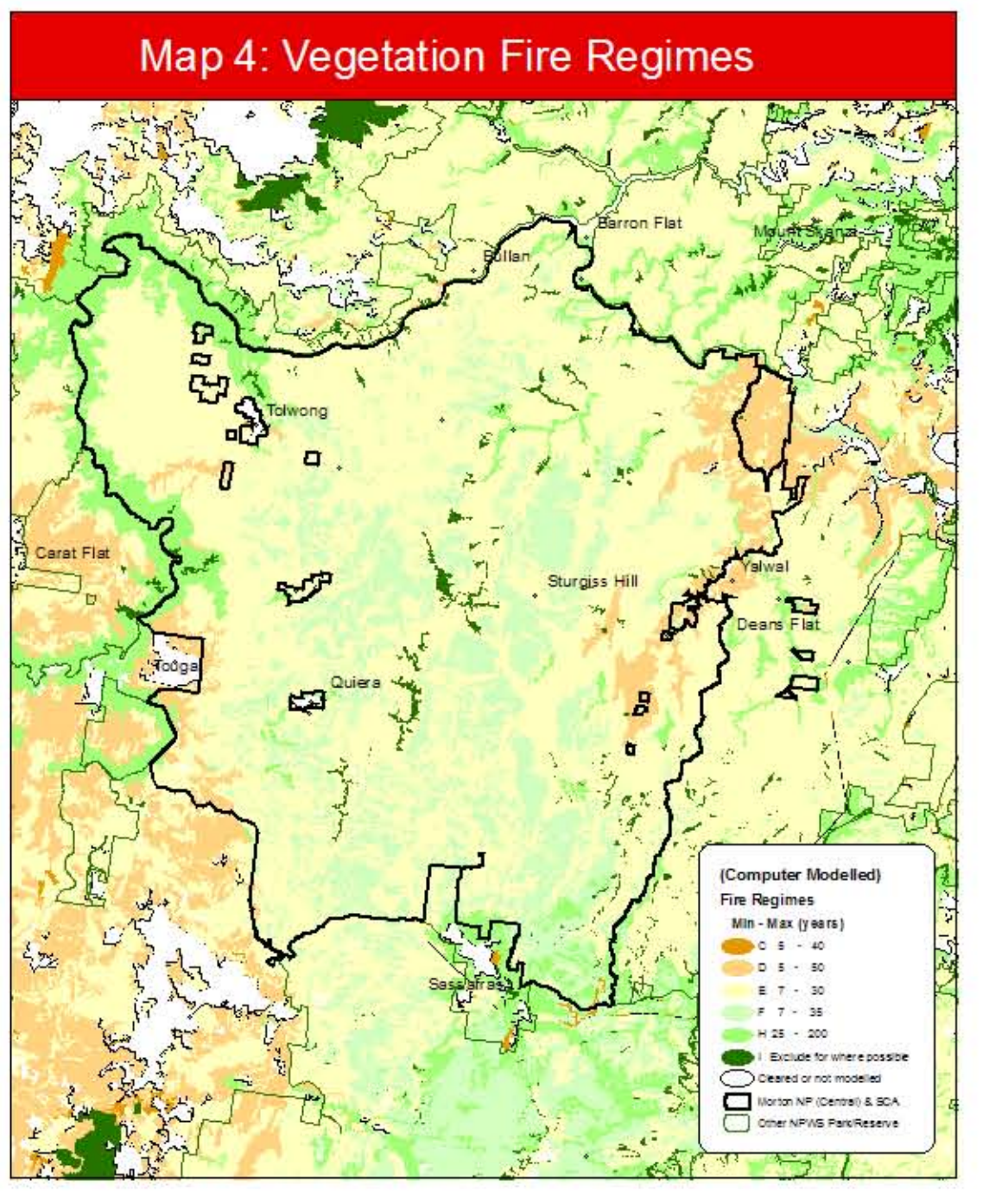
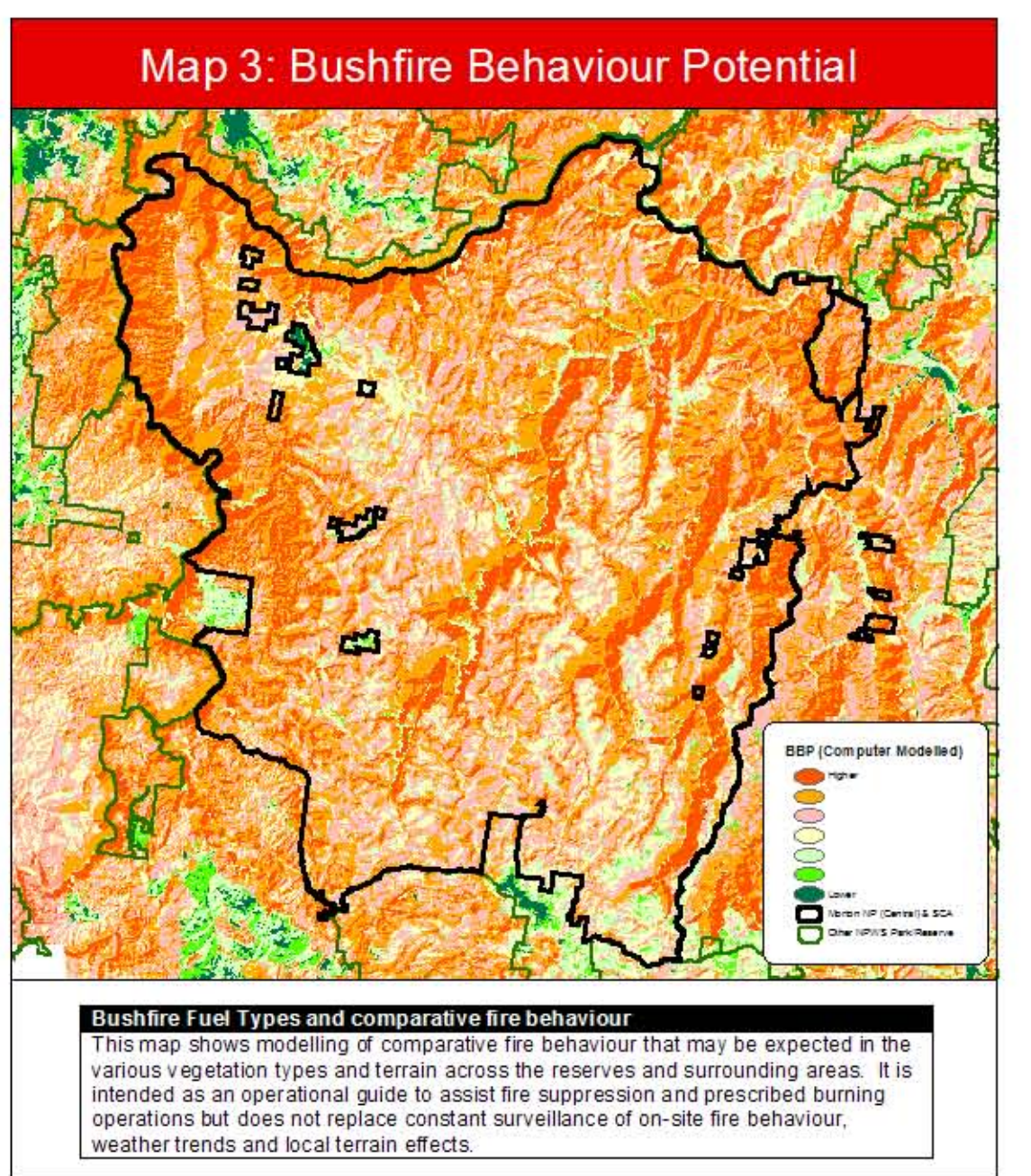
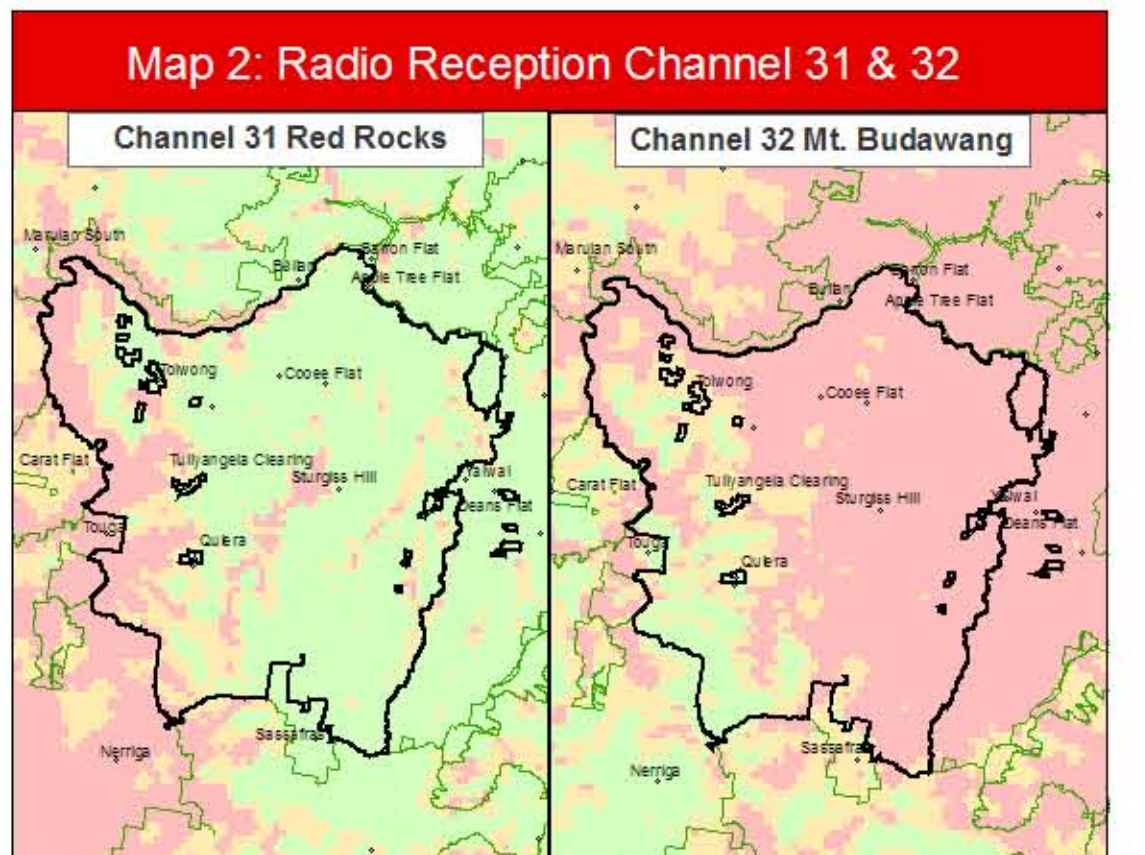
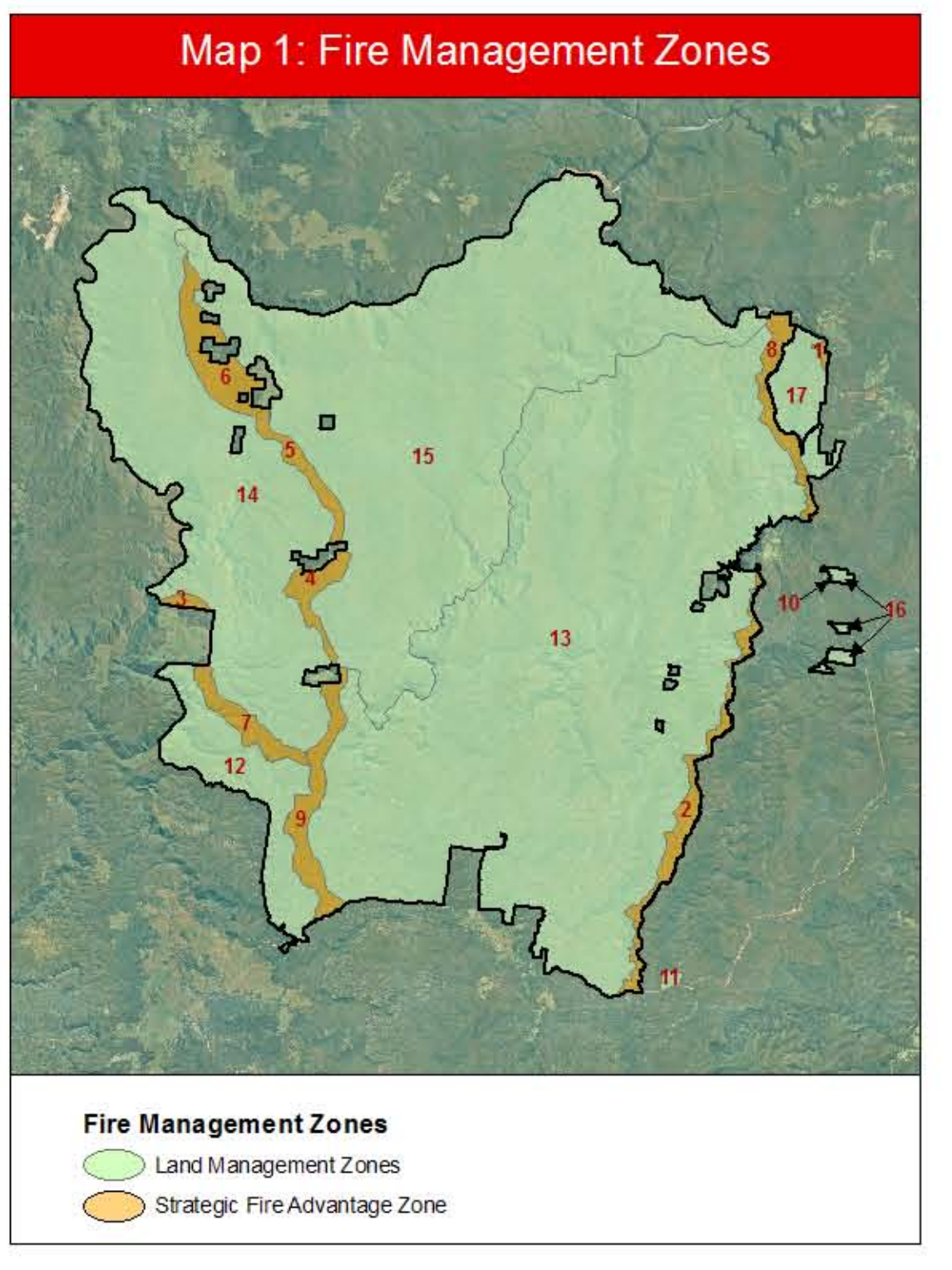
The fire management strategy for Morton NP (Central) & Morton SCA is based on the fire management plans, objectives and other strategic documents that are in place. The fire management strategy is designed to protect the reserve from fire and to manage fire in a safe and efficient manner. The fire management strategy is based on the fire management plans, objectives and other strategic documents that are in place.

**Morton National Park (Central) & Morton State Conservation Area**  
**Fire Management Strategy**  
 Revised September 2009

This Map should be used in conjunction with topographic maps and ground reconnaissance during incidents and the development of incident action plans. Copyright Department of Environment and Climate Change. These data are not guaranteed to be free from error or omission. The Department of Environment and Climate Change and its employees disclaim liability for any act done on the information in the data and any consequences of such acts or omissions.

Grid Interval 1000m  
 Australian Map Grid Zone 56

Please forward comments on this strategy to:  
 sic.fleplanning@environment.nsw.gov.au  
 or NPWS Nowra Area Office, P.O. Box 707, NSW 2541



**Recent Fire History**

- 2002
- 2003
- 2004
- 2005
- 2006
- 2007
- 2008
- 2009
- 2010