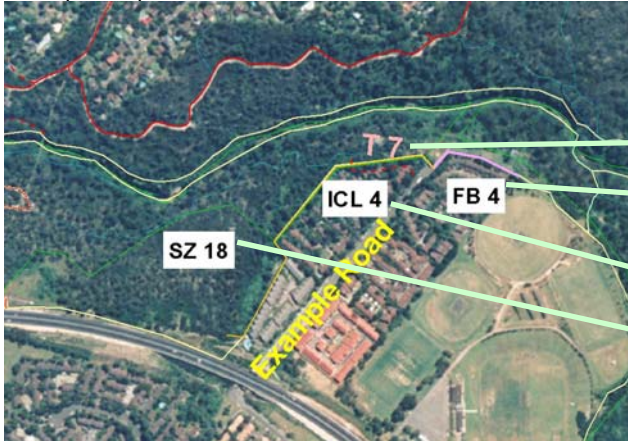


Guide to interpreting the fire management strategy maps

Step 1 – Locate the area of interest on the Fire management strategy Map 3

Example Map 3



Step 2 - Identify the Map features and Map references

For example in the example map the following map features are identified

T7 – Vehicle Trail 7

FB 4 – Fire Break 4

IS4 – Interface survey 4

SZ 18 – Strategic Fire Management Zone 18

Step 3 – refer to the appropriate appendix in the Fire Management Strategy to find the proposed management for the feature.

For SZ 18 – Strategic fire management zone 18 in the map refer to Appendix 7.

Appendix 7: Fire Management Zones

Map ID	Map No.	Name	Objective	Strategy	Tenure	Ha. on Park	Ha. Off park
SZ 18	3A	Example Road	To assist with the strategic control of bushfires and the protection of assets in Example Town	Assess requirement for prescribed burn between 8–14 years post fire.	NPWS,	13.2	7.9

For FB 4 – Fire Break 4 in the map refer to Appendix 8.

Appendix 8: Fire Break Register

Map ID	Map No.	Name	Objective	Strategy	Tenure	Length (m)
FB 4	3A	Example Rd East	To provide safe access for fire agency crews and to assist in the protection of assets in Example Town	Maintain existing fire break by slashing , tritter or underscrubbing as required	NPWS, Private Lands	168.4

For T7 – Vehicle Trail 7 in the map refer to Appendix 9

Appendix 9: Access Trail register

Map ID	Map No	Name	Current accessibility	Proposed BFCC Class	Strategy	Tenure	Length (m)
T 7	3A	Example Rd Powerline Trail	Cat 7	Secondary	Assess requirements to upgrade or maintain to Dormant standard	NPWS,	143.7

For IS4 – Interface survey refer to Appendix 10

Appendix 10: Interface Survey and Assessment

Map ID	Map No.	Name	Objective	Strategy	Tenure	Length (m)
IS 4	3A	Example Road West	To provide safe access for fire agency crews and to assist in the protection of assets in Example Town	Consultation with other agencies private landholders/ Survey to determine accessibility and feasibility of works	NPWS, Private Lands	572.2

Map 2: Bushfire Risks

Map 3A – 3D: Fire Management Strategies

315000 320000 325000 330000

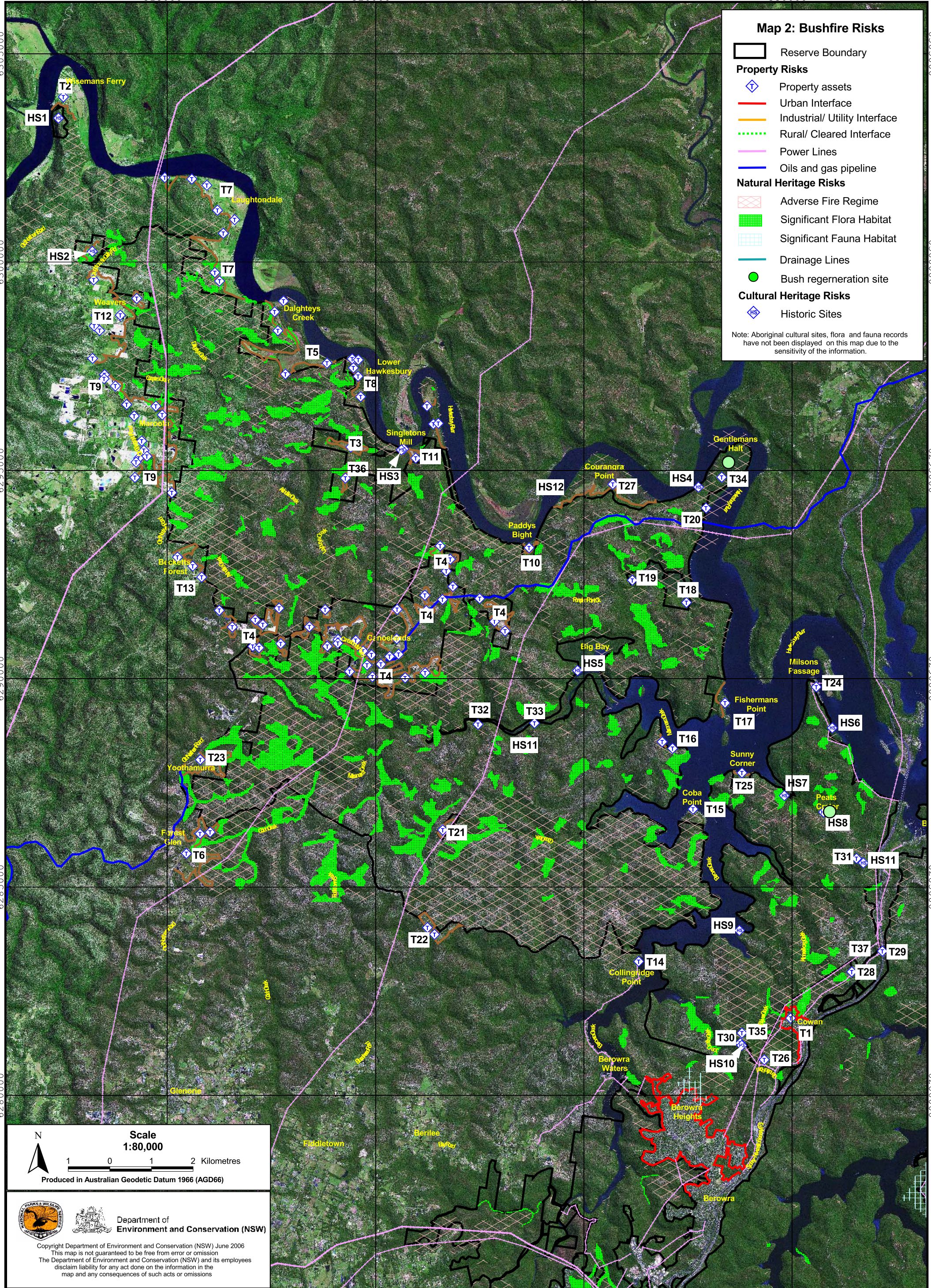
6305000
6300000
6295000
6290000
6285000
6280000

6305000
6300000
6295000
6290000
6285000
6280000

Map 2: Bushfire Risks

- Reserve Boundary
- Property Risks**
 - Property assets
 - Urban Interface
 - Industrial/ Utility Interface
 - Rural/ Cleared Interface
 - Power Lines
 - Oils and gas pipeline
- Natural Heritage Risks**
 - Adverse Fire Regime
 - Significant Flora Habitat
 - Significant Fauna Habitat
 - Drainage Lines
 - Bush regeneration site
- Cultural Heritage Risks**
 - Historic Sites

Note: Aboriginal cultural sites, flora and fauna records have not been displayed on this map due to the sensitivity of the information.



Scale
1:80,000

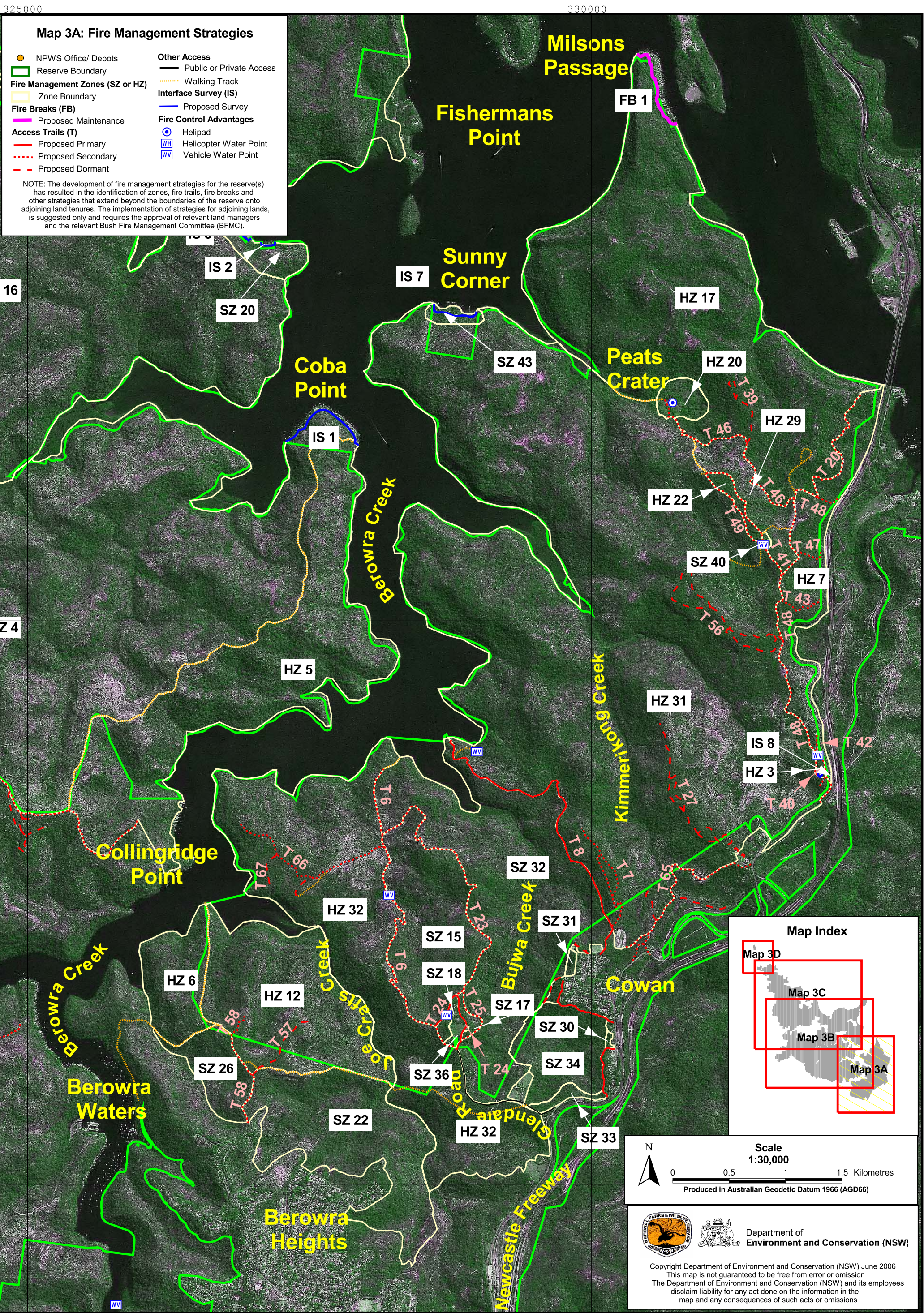
0 1 2 Kilometres

Produced in Australian Geodetic Datum 1966 (AGD66)

Department of Environment and Conservation (NSW)

Copyright Department of Environment and Conservation (NSW) June 2006
This map is not guaranteed to be free from error or omission
The Department of Environment and Conservation (NSW) and its employees
disclaim liability for any act done on the information in the
map and any consequences of such acts or omissions

315000 320000 325000 330000



Map 3A: Fire Management Strategies

- NPWS Office/ Depots
- Reserve Boundary
- Fire Management Zones (SZ or HZ)
- Zone Boundary
- Fire Breaks (FB)
- Proposed Maintenance
- Access Trails (T)
- Proposed Primary
- Proposed Secondary
- Proposed Dormant

- Other Access**
- Public or Private Access
- Walking Track
- Interface Survey (IS)
- Proposed Survey

- Fire Control Advantages**
- Helipad
- Helicopter Water Point
- Vehicle Water Point

NOTE: The development of fire management strategies for the reserve(s) has resulted in the identification of zones, fire trails, fire breaks and other strategies that extend beyond the boundaries of the reserve onto adjoining land tenures. The implementation of strategies for adjoining lands, is suggested only and requires the approval of relevant land managers and the relevant Bush Fire Management Committee (BFMC).

Map Index

N

Scale 1:30,000

0 0.5 1 1.5 Kilometres

Produced in Australian Geodetic Datum 1966 (AGD66)

Department of Environment and Conservation (NSW)

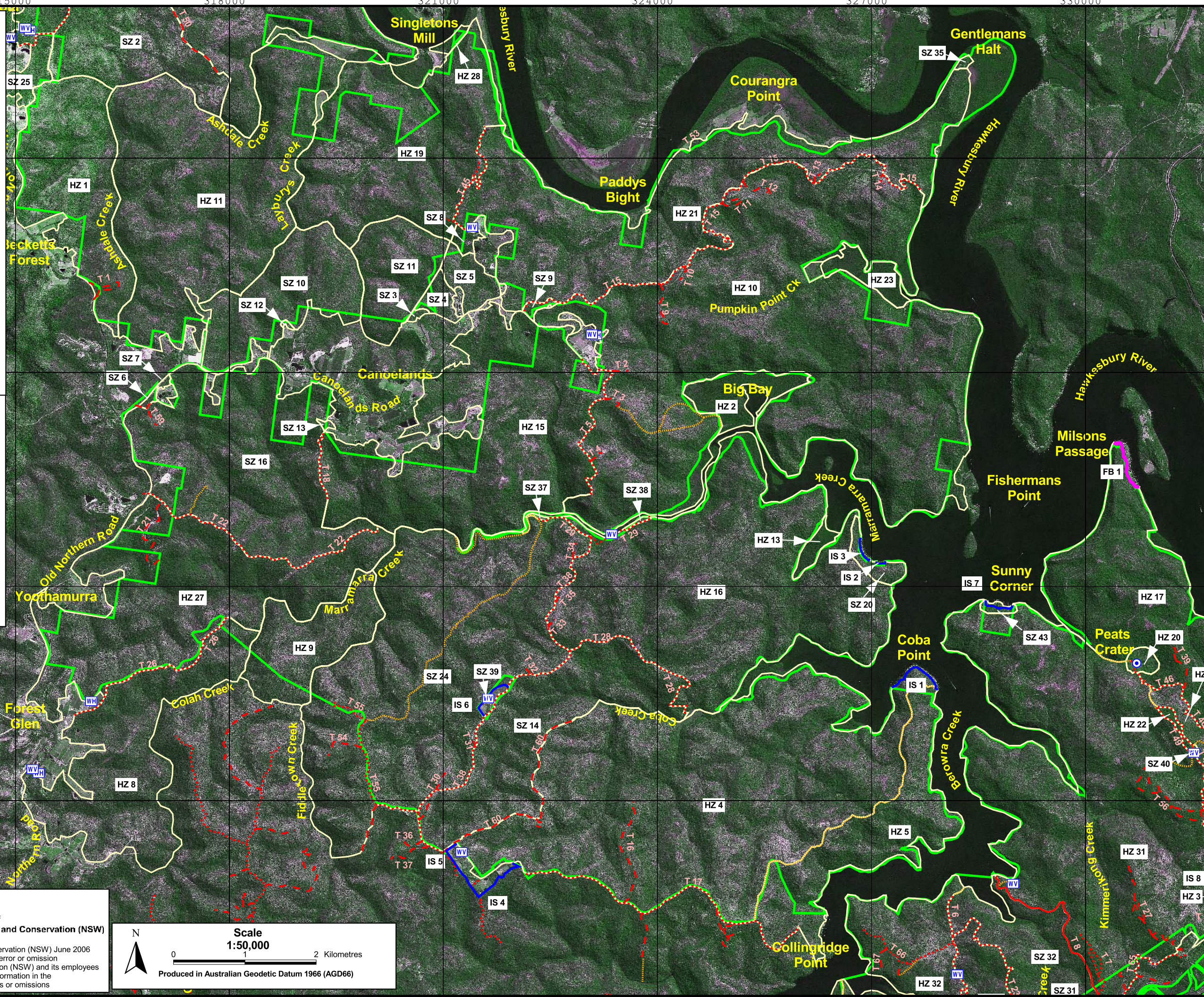
Copyright Department of Environment and Conservation (NSW) June 2006
This map is not guaranteed to be free from error or omission
The Department of Environment and Conservation (NSW) and its employees
disclaim liability for any act done on the information in the
map and any consequences of such acts or omissions

Map 3B: Fire Management Strategies

- NPWS Office/ Depots
- Reserve Boundary
- Fire Management Zones (SZ or HZ)
- Zone Boundary
- Fire Breaks (FB)
 - Proposed Maintenance
- Access Trails (T)
 - Proposed Primary
 - Proposed Secondary
 - Proposed Dormant
- Other access
 - Public or Private Access
 - Walking Track
- Interface Survey (IS)
 - Proposed Survey
- Fire Control Advantages
 - Helipad
 - Helicopter Water Point
 - Vehicle Water Point

NOTE: The development of fire management strategies for the reserve(s) has resulted in the identification of zones, fire trails, fire breaks and other strategies that extend beyond the boundaries of the reserve to adjoining land tenures. The implementation of strategies for adjoining lands, is suggested only and requires the approval of relevant land managers and the relevant Bush Fire Management Committee (BFMC).

Map Index

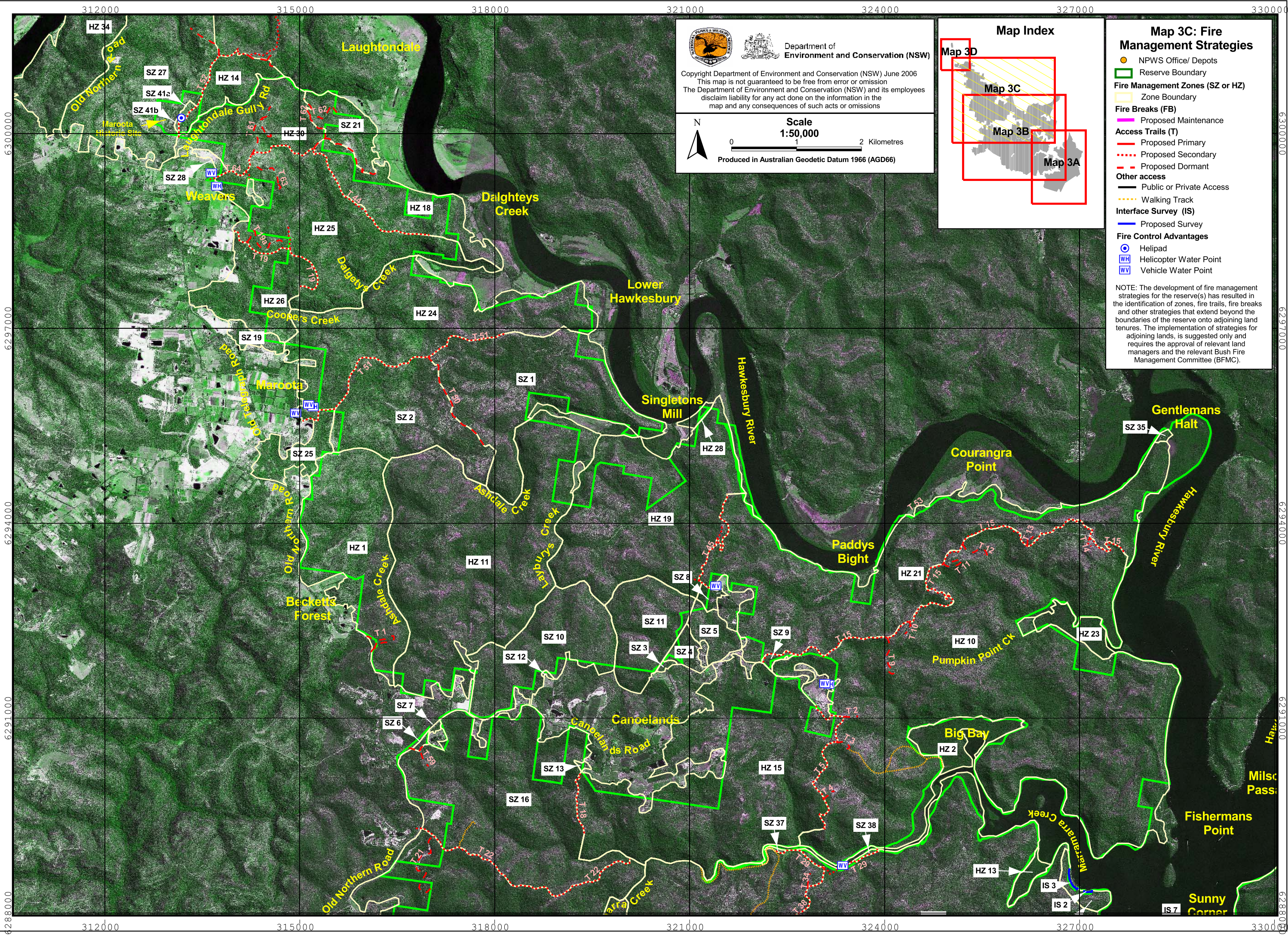


Department of Environment and Conservation (NSW)

Copyright Department of Environment and Conservation (NSW) June 2006
This map is not guaranteed to be free from error or omission
The Department of Environment and Conservation (NSW) and its employees
disclaim liability for any act done on the information in the
map and any consequences of such acts or omissions

Scale
1:50,000

Produced in Australian Geodetic Datum 1966 (AGD66)



Department of Environment and Conservation (NSW)

Copyright Department of Environment and Conservation (NSW) June 2006
This map is not guaranteed to be free from error or omission
The Department of Environment and Conservation (NSW) and its employees disclaim liability for any act done on the information in the map and any consequences of such acts or omissions

Scale
1:50,000
0 1 2 Kilometres

Produced in Australian Geodetic Datum 1966 (AGD66)

Map Index

Map 3D
Map 3C
Map 3B
Map 3A

Map 3C: Fire Management Strategies


- NPWS Office/ Depots
- Reserve Boundary
- Fire Management Zones (SZ or HZ)**
- Zone Boundary
- Fire Breaks (FB)**
- Proposed Maintenance
- Access Trails (T)**
- Proposed Primary
- Proposed Secondary
- Proposed Dormant
- Other access**
- Public or Private Access
- Walking Track
- Interface Survey (IS)**
- Proposed Survey
- Fire Control Advantages**
- Helipad
- Helicopter Water Point
- Vehicle Water Point

NOTE: The development of fire management strategies for the reserve(s) has resulted in the identification of zones, fire trails, fire breaks and other strategies that extend beyond the boundaries of the reserve onto adjoining land tenures. The implementation of strategies for adjoining lands, is suggested only and requires the approval of relevant land managers and the relevant Bush Fire Management Committee (BFMC).


6300000
6297000
6294000
6291000
6288000

6300000
6297000
6294000
6291000
6288000

312000 315000 318000 321000 324000 327000 330000

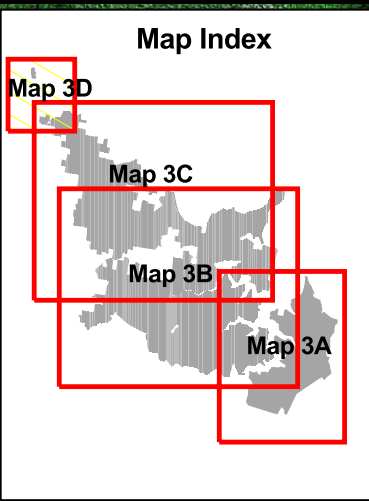
 Department of Environment and Conservation (NSW)

Copyright Department of Environment and Conservation (NSW) June 2006
This map is not guaranteed to be free from error or omission
The Department of Environment and Conservation (NSW) and its employees disclaim liability for any act done on the information in the map and any consequences of such acts or omissions

 **Scale**
1:20,000
0 1 Kilometres

Produced in Australian Geodetic Datum 1966 (AGD66)

Map Index



Map 3D
Map 3C
Map 3B
Map 3A

Map 3D: Fire Management Strategies

- NPWS Office/ Depots
- Reserve Boundary
- Fire Management Zones (SZ or HZ)
- Zone Boundary
- Fire Breaks (FB)
 - Proposed Maintenance
- Access Trails (T)
 - Proposed Primary
 - Proposed Secondary
 - Proposed Dormant
- Other access
 - Public or Private Access
 - Walking Track
- Interface Survey (IS)
 - Proposed Survey
- Fire Control Advantages
 - Helipad
 - Helicopter Water Point
 - Vehicle Water Point

NOTE: The development of fire management strategies for the reserve(s) has resulted in the identification of zones, fire trails, fire breaks and other strategies that extend beyond the boundaries of the reserve onto adjoining land tenures. The implementation of strategies for adjoining lands, is suggested only and requires the approval of relevant land managers and the relevant Bush Fire Management Committee (BFMC).

