



INFRASTRUCTURE

- STUDY AREA BOUNDARY
- RIVER or CREEK
- ROAD or HIGHWAY
- RAILWAY

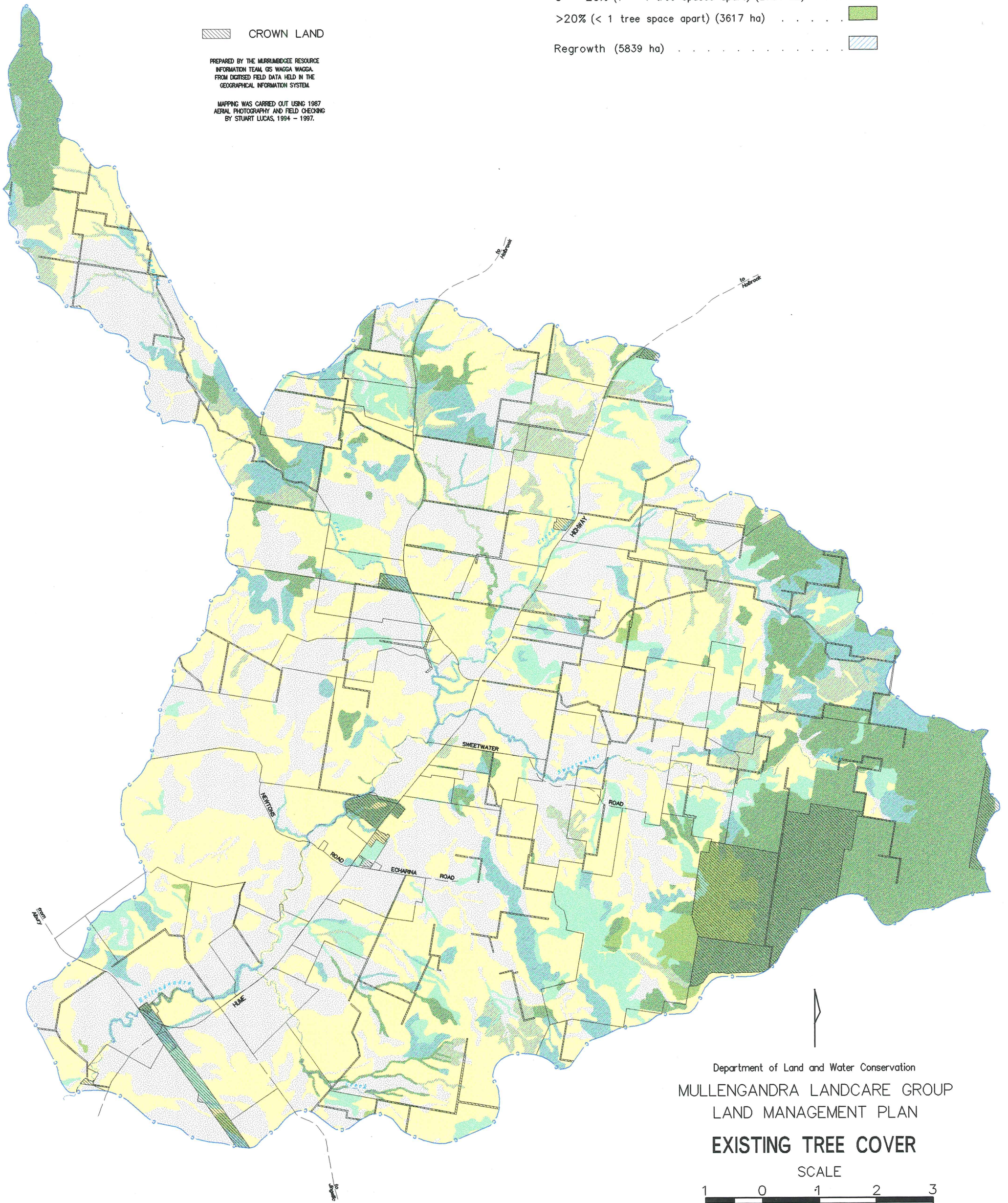
CROWN LAND

PREPARED BY THE MURRUMBIDGE RESOURCE INFORMATION TEAM, GIS WAGGA WAGGA, FROM DIGITISED FIELD DATA HELD IN THE GEOGRAPHICAL INFORMATION SYSTEM.

MAPPING WAS CARRIED OUT USING 1987 AERIAL PHOTOGRAPHY AND FIELD CHECKING BY STUART LUCAS, 1994 - 1997.

CANOPY COVER/REGROWTH

- 0 - .25% (> 20 tree spaces apart) (6221 ha)
- .25 - 5% (4 - 20 tree spaces apart) (8687 ha)
- 5 - 20% (1 - 4 tree spaces apart) (2704 ha)
- >20% (< 1 tree space apart) (3617 ha)
- Regrowth (5839 ha)



Department of Land and Water Conservation
MULLENGANDRA LANDCARE GROUP
LAND MANAGEMENT PLAN
EXISTING TREE COVER



Kilometres

GIN