



INFRASTRUCTURE

- STUDY AREA BOUNDARY
- RIVER or CREEK
- ROAD or HIGHWAY
- RAILWAY

CROWN LAND

PREPARED BY THE MURRUMBIDGE RESOURCE INFORMATION TEAM, GS WAGGA WAGGA, FROM DIGITISED FIELD DATA HELD IN THE GEOGRAPHICAL INFORMATION SYSTEM.

MAPPING WAS CARRIED OUT USING 1987 AERIAL PHOTOGRAPHY AND FIELD CHECKING BY STUART LUCAS, 1994 - 1997.

SENSITIVE LAND

- SWAMPS - CLASS VIIw - (12 ha)**
Maintain or enhance natural habitat, minimise recharge.
- STEEP AND ROCKY - CLASS VIIIr, VIII, VIIr, VIIr - (2145 ha)**
Maintain or regenerate trees and native pastures.
- GULLIES AND CHANNELS - CLASS VIIe - (688 ha)**
Fence to exclude stock, undertake erosion control works at eroded sites and allow to revegetate.
- SALT OUTCROP - CLASS VIIs, VI s - (105 ha)**
Fence to exclude livestock and plant salt tolerant trees, shrubs and grasses.

LOW PRODUCTION GRAZING LAND (NOT TO BE CULTIVATED)

- VERY SHALLOW ROCKY SOILS - CLASS VIr, VI, VIp - (3401 ha)**
Maintain or establish good quality native or introduced perennial pastures using direct drilling techniques. Maintain/encourage regeneration of native trees (20%-50% cover)

HIGH PRODUCTION GRAZING LAND (NOT TO BE CULTIVATED)

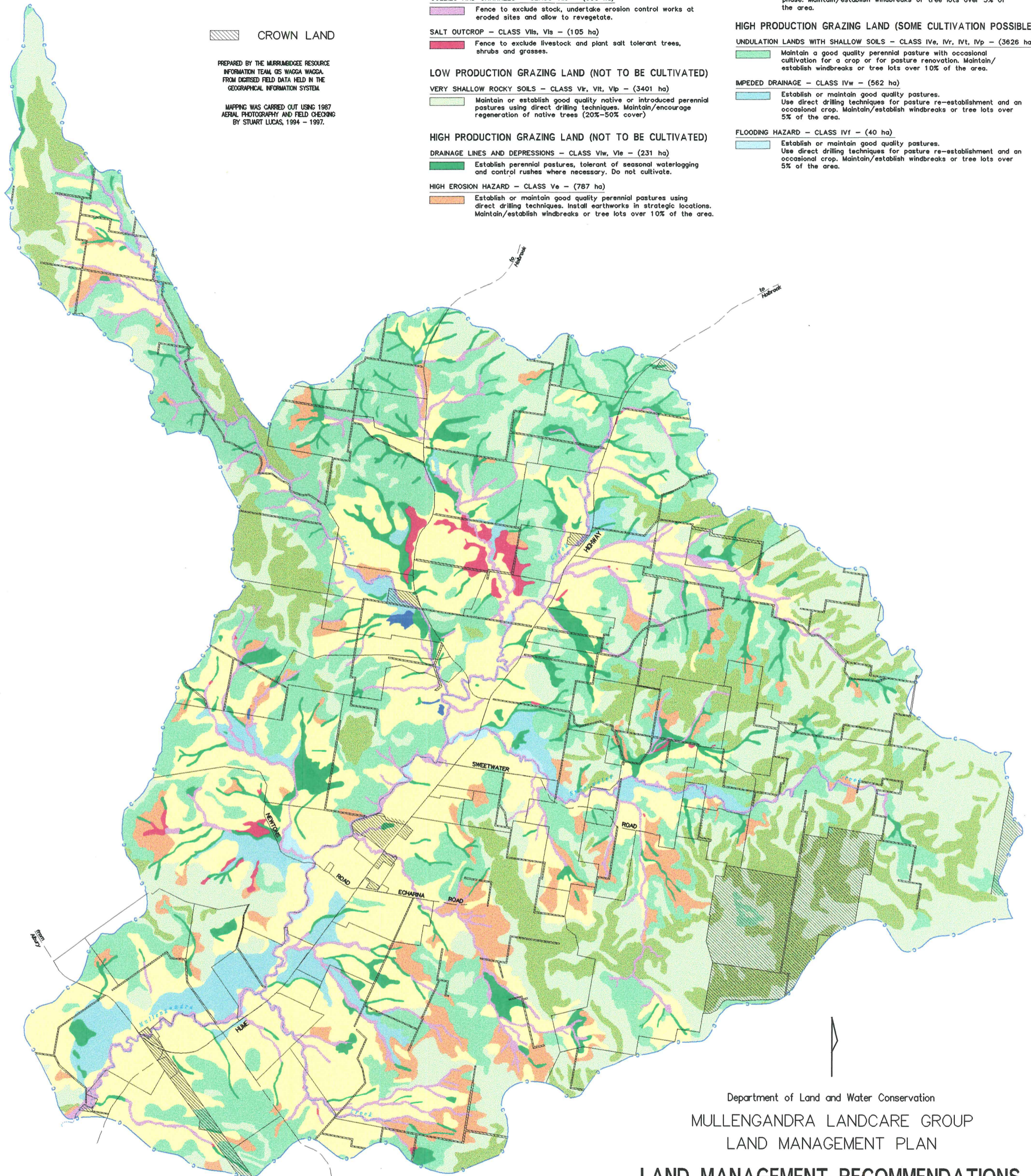
- DRAINAGE LINES AND DEPRESSIONS - CLASS VIw, VIe - (231 ha)**
Establish perennial pastures, tolerant of seasonal waterlogging and control rushes where necessary. Do not cultivate.
- HIGH EROSION HAZARD - CLASS Ve - (787 ha)**
Establish or maintain good quality perennial pastures using direct drilling techniques. Install earthworks in strategic locations. Maintain/establish windbreaks or tree lots over 10% of the area.

CROPPING LAND

- HIGH TO LOW EROSION HAZARD WITH SEASONAL WATERLOGGING - CLASS III, II, IIw - (4295 ha)**
When cropped, practise conservation farming techniques and construct earthworks where necessary. Time cultivation/sowing to minimise soil compaction and soil structure decline. No more than 3 crops in 7 years. Use perennial species in the pasture phase. Maintain/establish windbreaks or tree lots over 5% of the area.

HIGH PRODUCTION GRAZING LAND (SOME CULTIVATION POSSIBLE)

- UNDULATION LANDS WITH SHALLOW SOILS - CLASS IVe, IVr, IVt, IVp - (3626 ha)**
Maintain a good quality perennial pasture with occasional cultivation for a crop or for pasture renovation. Maintain/establish windbreaks or tree lots over 10% of the area.
- IMPEDED DRAINAGE - CLASS IVw - (562 ha)**
Establish or maintain good quality pastures. Use direct drilling techniques for pasture re-establishment and an occasional crop. Maintain/establish windbreaks or tree lots over 5% of the area.
- FLOODING HAZARD - CLASS IVf - (40 ha)**
Establish or maintain good quality pastures. Use direct drilling techniques for pasture re-establishment and an occasional crop. Maintain/establish windbreaks or tree lots over 5% of the area.



Department of Land and Water Conservation
MULLENGANDRA LANDCARE GROUP
LAND MANAGEMENT PLAN

LAND MANAGEMENT RECOMMENDATIONS



Kilometres

GIN