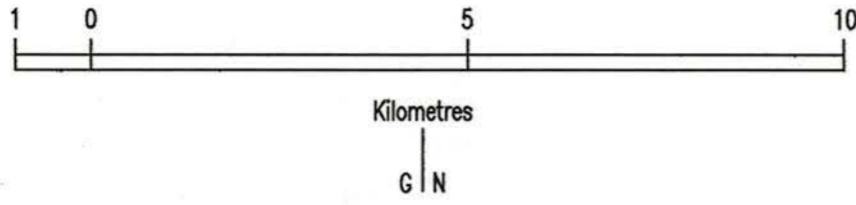


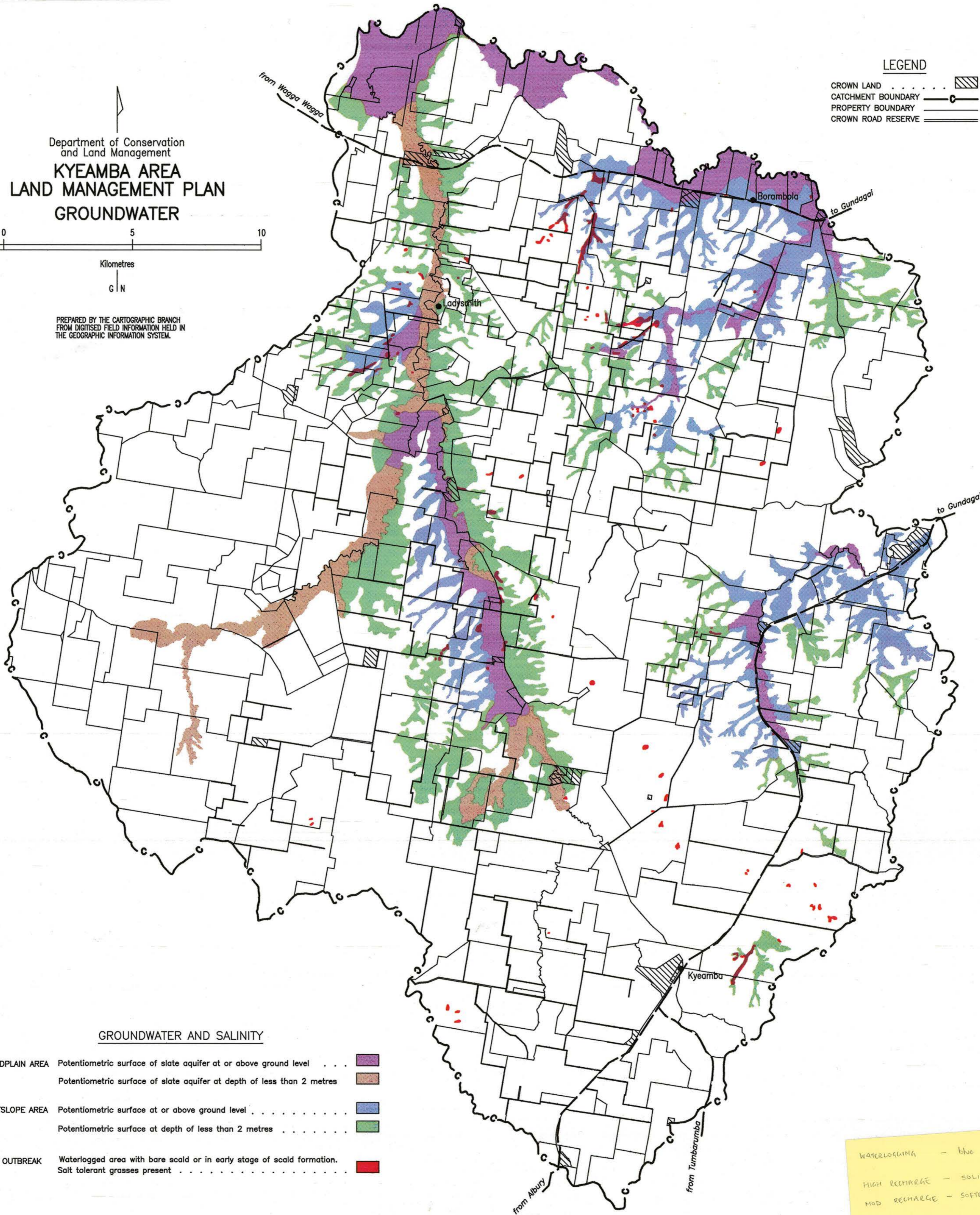
Department of Conservation  
and Land Management  
**KYEAMBA AREA  
LAND MANAGEMENT PLAN  
GROUNDWATER**



PREPARED BY THE CARTOGRAPHIC BRANCH  
FROM DIGITISED FIELD INFORMATION HELD IN  
THE GEOGRAPHIC INFORMATION SYSTEM.

**LEGEND**

- CROWN LAND . . . . . [hatched box]
- CATCHMENT BOUNDARY [line with 'C' markers]
- PROPERTY BOUNDARY [solid line]
- CROWN ROAD RESERVE [double line]



**GROUNDWATER AND SALINITY**

- FLOODPLAIN AREA**
  - Potentiometric surface of slate aquifer at or above ground level . . . . . [purple box]
  - Potentiometric surface of slate aquifer at depth of less than 2 metres . . . . . [brown box]
- FOOTSLOPE AREA**
  - Potentiometric surface at or above ground level . . . . . [blue box]
  - Potentiometric surface at depth of less than 2 metres . . . . . [green box]
- SALT OUTBREAK**
  - Waterlogged area with bare scald or in early stage of scald formation. [red box]
  - Salt tolerant grasses present . . . . . [dotted red box]

Waterlogging - blue hatch  
 High recharge - solid gold  
 Mod recharge - softer yellow/  
 lime