

Help save the Malleefowl (*Leipoa ocellata*)

Scientific name: *Leipoa ocellata*

Conservation status in NSW: Endangered

Commonwealth status: Vulnerable

Saving our Species management stream: Iconic species

Species profile:

<http://www.environment.nsw.gov.au/threatenedspeciesapp/profile.aspx?id=10459>

Saving our Species aims to conserve as many threatened species as possible. This conservation project aims to secure the Malleefowl in the wild in NSW for 100 years, engage local communities in its conservation, and encourage the NSW community to identify with it as a flagship for threatened species conservation. The project was developed by experts who identified the minimum number of necessary management sites and conservation actions required to conserve the species.



Six sites have been identified in NSW (ordered north to south). They are:

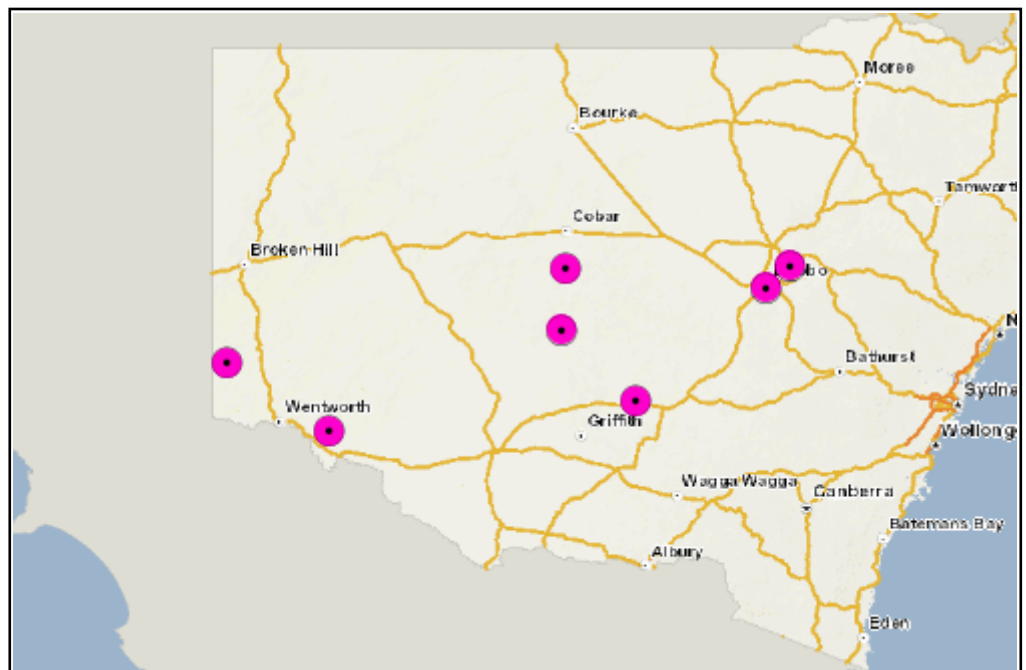
- Goonoo in Dubbo; Gilgandra; Warrumbungle; Wellington LGAs
- Nymagee in Bogan; Cobar LGAs
- Central Mallee in Carrathool; Cobar LGAs
- Scotia-Tarawi in Unincorporated Far West Region; Wentworth LGAs
- North Yalgogrin in Bland LGA
- Mallee Cliffs in Balranald; Wentworth LGAs

More information about each site is provided on the following pages.

All conservation work being undertaken to conserve the Malleefowl around the state is vital to its recovery. If you are working on one of the sites identified in this conservation project, or on a site elsewhere, please contact us at www.environment.nsw.gov.au/savingourspecies/contactus.htm

Map of Malleefowl key management sites

Legend	
	Key Management Site
	Additional Management Site



Site 1: Goonoo

Large area centred on Goonoo State Conservation Area, also including Goonoo, Breelong and Cobbora National Parks and Coolbaggie Nature Reserve, as well as surrounding private leasehold lands, 20km north-east of Dubbo.

Total site area (ha): 251,806.03



LGA: Dubbo; Gilgandra; Warrumbungle; Wellington

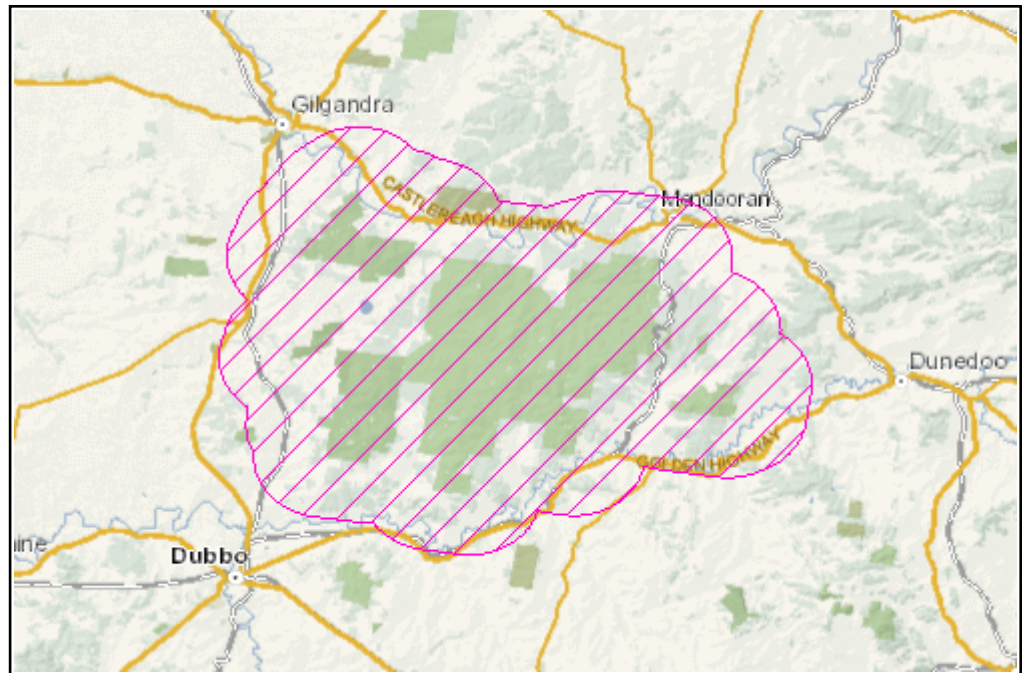
NPWS reserve: Adelyne Cca Zone 3 State Conservation Area; Breelong Cca Zone 1 National Park; Cobbora Cca Zone 3 State Conservation Area; Coolbaggie Nature Reserve; Goonoo Cca Zone 1 National Park; Goonoo Cca Zone 3 State Conservation Area; Mogriguy Cca Zone 1 National Park

Occurs on private land: Yes

Estimated population size: <3 breeding pairs

Management site map

Legend	
	Key Management Site
	Additional Management Site



Management activities to protect the Malleefowl at the site

Threat name	Objective	Action
Foxes	Reduce pest species densities and maintain at low levels	Fox control
Feral goats	Reduce pest species densities and maintain at low levels	Goat control
Road mortality	Minimise incidence of roadkill	Install informative signs
Vegetation clearing for agricultural purposes	Minimise impacts/incidence of clearing on the species/habitat	Community education
Fire disrupting breeding/reproduction activities	Avoid hazard reduction during breeding/reproduction season where possible	Fire planning

Monitoring actions

Regular monitoring of species abundance, extent and condition on the site will be conducted to determine population trends through time. The extent and severity of threats will also be monitored to assess the effectiveness of management actions.

Management actions will be adapted, added or removed over time in response to monitoring results, based on maximising the project's effectiveness.

Site 2: Nymagee

Area of private leasehold land surrounding the township of Nymagee, approximately 75km south of Cobar.

Total site area (ha): 632,557.55

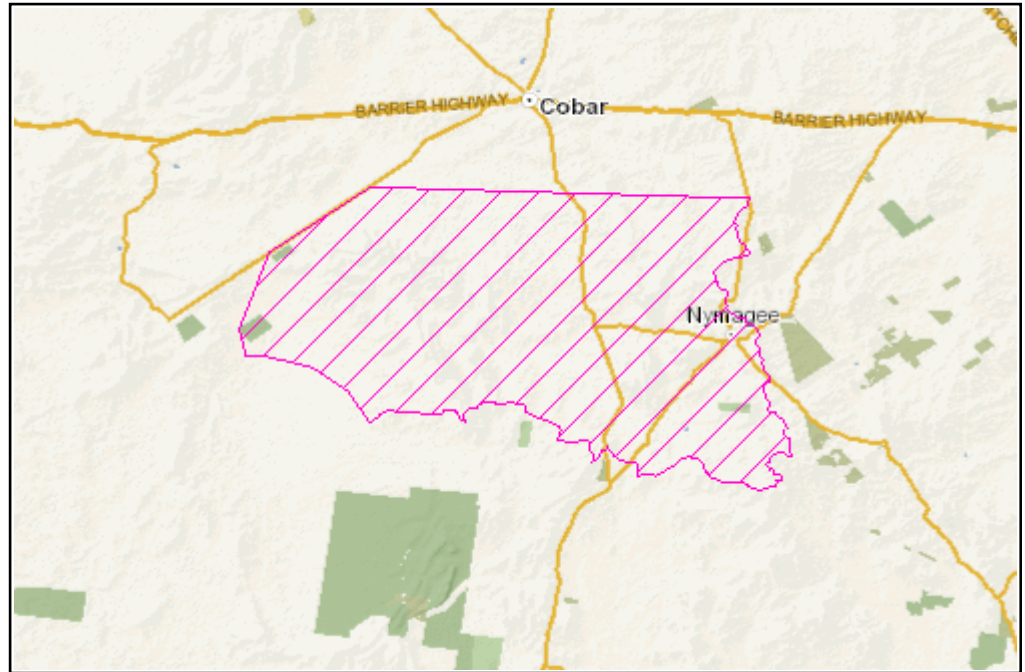
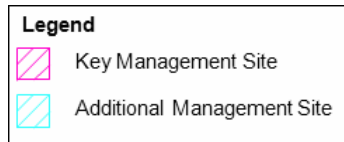
LGA: Bogan; Cobar

NPWS reserve: Balowra State Conservation Area; Paddington Nature Reserve

Occurs on private land: Yes

Estimated population size: 10-15 breeding pairs

Management site map



Management activities to protect the Malleefowl at the site

Threat name	Objective	Action
Foxes	Reduce pest species densities and maintain at low levels	Fox control
Feral goats	Prevent pest species invasion to the site	Barrier/fence installation
Feral pigs	Reduce pest species densities and maintain at low levels	Pig control
Loss of key habitat	Minimise impacts of clearing/removal of key habitat	Community education
Fire disrupting breeding/reproduction activities	Avoid hazard reduction during breeding/reproduction season where possible	Fire planning

Monitoring actions

Regular monitoring of species abundance, extent and condition on the site will be conducted to determine population trends through time. The extent and severity of threats will also be monitored to assess the effectiveness of management actions.

Management actions will be adapted, added or removed over time in response to monitoring results, based on maximising the project's effectiveness.

Site 3: Central Mallee

A large area in central NSW, approximately 100 x 100km, including Yathong, Round Hill and Nombinnie Nature Reserves and Nombinnie State Conservation Area, as well as surrounding leasehold lands under private management.

Total site area (ha): 451,654.04



LGA: Carrathool; Cobar

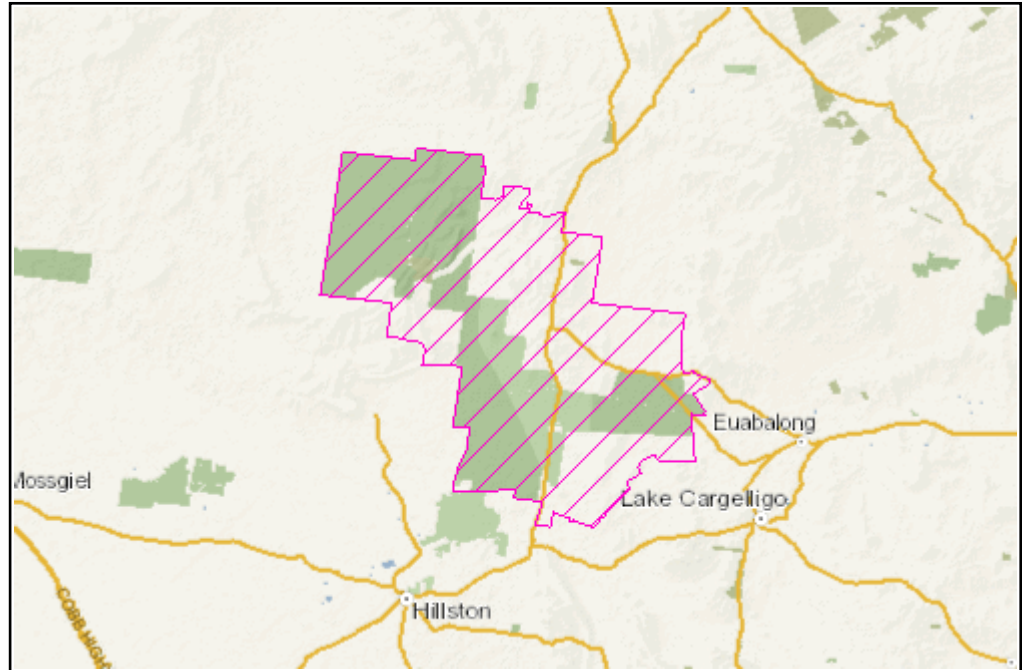
NPWS reserve: Lachlan Valley National Park; Nombinnie Nature Reserve; Nombinnie State Conservation Area; Round Hill Nature Reserve; Yathong Nature Reserve

Occurs on private land: Yes

Estimated population size: <20 breeding pairs

Management site map

Legend	
	Key Management Site
	Additional Management Site



Management activities to protect the Malleefowl at the site

Threat name	Objective	Action
Foxes	Reduce pest species densities and maintain at low levels	Fox control
Feral goats	Prevent pest species invasion to the site	Barrier/fence installation
Feral pigs	Reduce pest species densities and maintain at low levels	Pig control
Loss of key habitat	Minimise impacts of clearing/removal of key habitat	Community education
Fire disrupting breeding/reproduction activities	Avoid hazard reduction during breeding/reproduction season where possible	Fire planning

Monitoring actions

Regular monitoring of species abundance, extent and condition on the site will be conducted to determine population trends through time. The extent and severity of threats will also be monitored to assess the effectiveness of management actions.

Management actions will be adapted, added or removed over time in response to monitoring results, based on maximising the project's effectiveness.

Site 4: Scotia-Tarawi

Large site in far south-western NSW, adjacent to the South Australia border. Includes Tarawi National Park, two private properties managed for conservation (Scotia Sanctuary and Nanya Station) and additional private leasehold lands to the south.

Total site area (ha): 180,279.23

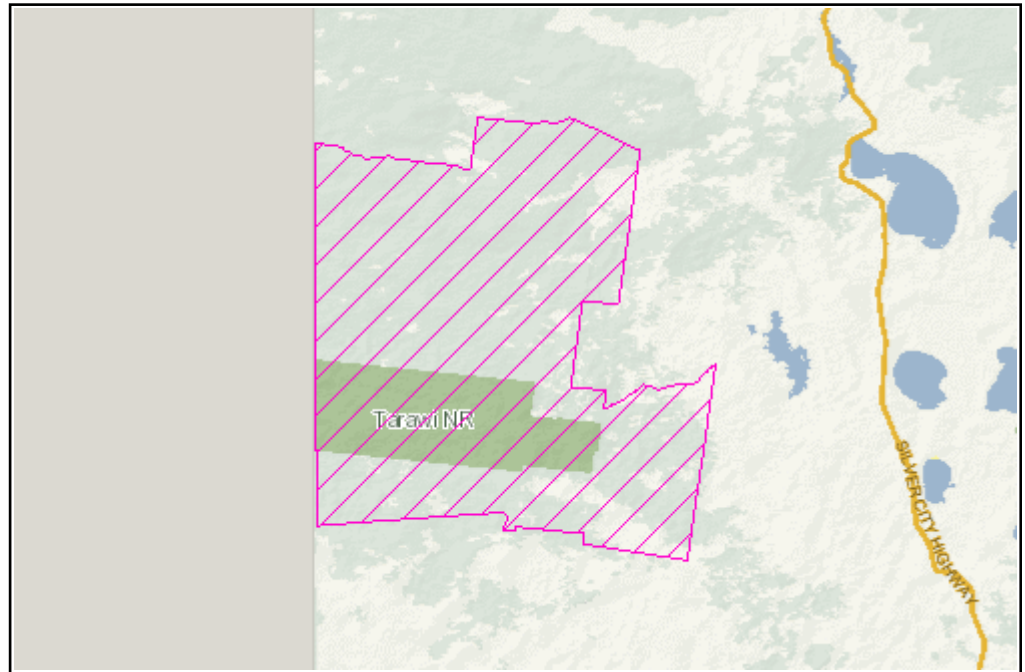
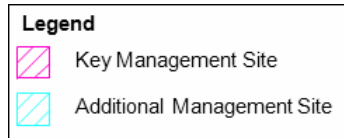
LGA: Unincorporated Far West Region; Wentworth

NPWS reserve: Tarawi Nature Reserve

Occurs on private land: Yes

Estimated population size: <10 breeding pairs

Management site map



Management activities to protect the Malleefowl at the site

Threat name	Objective	Action
Foxes	Reduce pest species densities and maintain at low levels	Fox control
Feral goats	Reduce pest species densities and maintain at low levels	Goat control
Fire disrupting breeding/reproduction activities	Avoid hazard reduction during breeding/reproduction season where possible	Fire planning

Monitoring actions

Regular monitoring of species abundance, extent and condition on the site will be conducted to determine population trends through time. The extent and severity of threats will also be monitored to assess the effectiveness of management actions.

Management actions will be adapted, added or removed over time in response to monitoring results, based on maximising the project's effectiveness.

Site 5: North Yalgogrin

Small cluster of private properties approximately 30km west of West Wyalong in south central NSW.

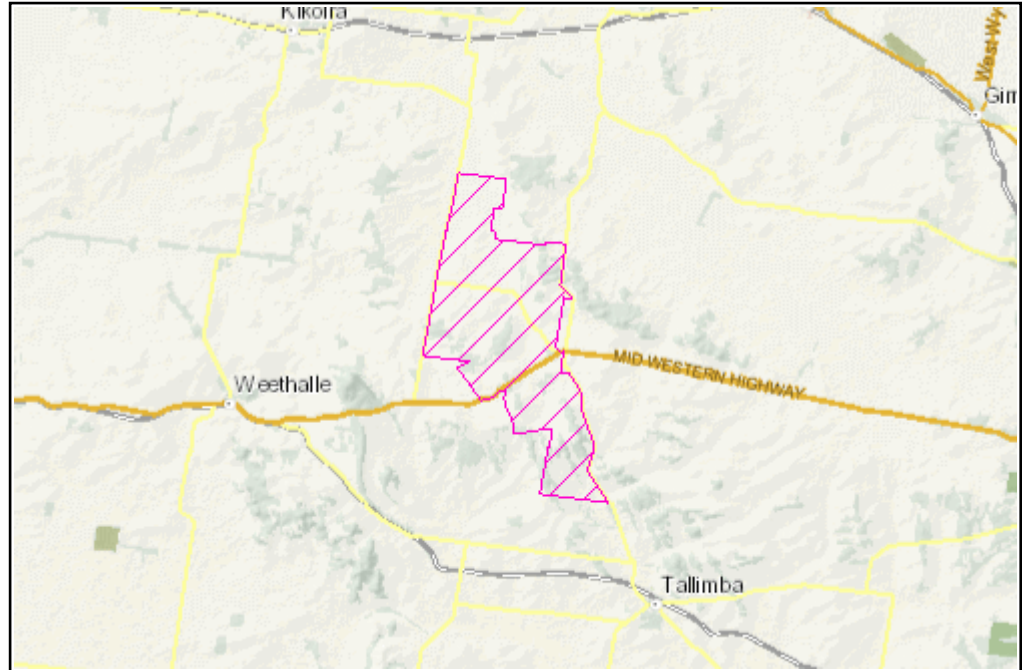
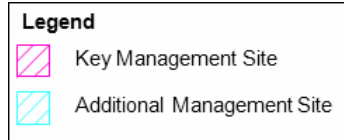
Total site area (ha): 9,823.61

LGA: Bland

Occurs on private land: Yes

Estimated population size: <4 breeding pairs

Management site map



Management activities to protect the Malleefowl at the site

Threat name	Objective	Action
Foxes	Reduce pest species densities and maintain at low levels	Fox control
Loss of key habitat	Minimise impacts of clearing/removal of key habitat	Community education

Monitoring actions

Regular monitoring of species abundance, extent and condition on the site will be conducted to determine population trends through time. The extent and severity of threats will also be monitored to assess the effectiveness of management actions.

Management actions will be adapted, added or removed over time in response to monitoring results, based on maximising the project's effectiveness.

Site 6: Mallee Cliffs

Area covering the extent of Mallee Cliffs National Park plus adjacent private land to the south, approximately 20km east of Buronga in southern NSW.

Total site area (ha): 87,433.36

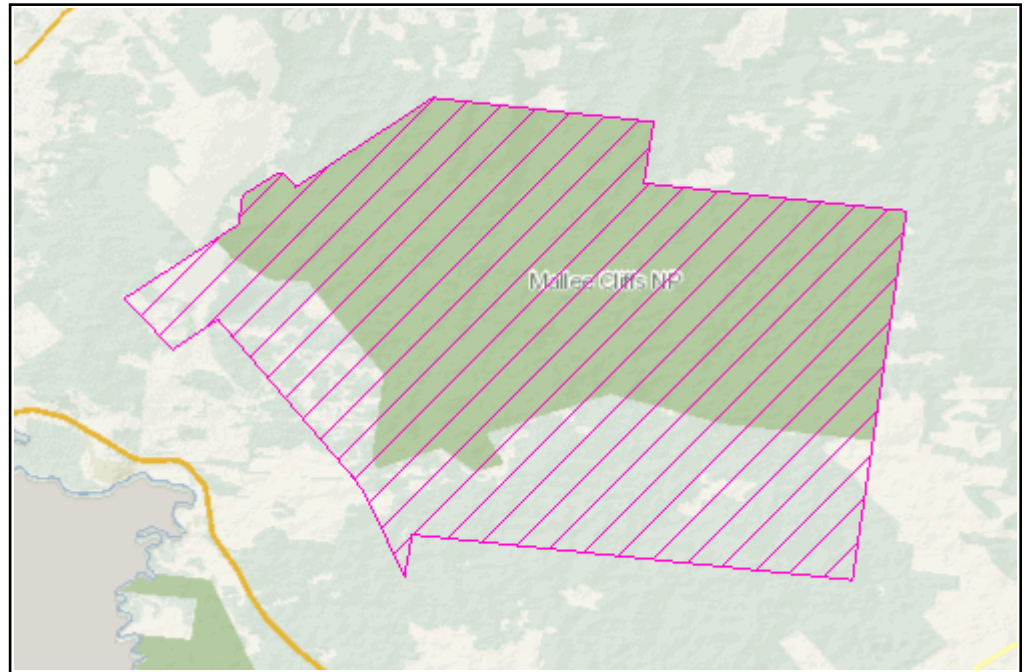
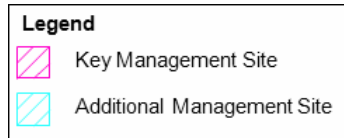
LGA: Balranald; Wentworth

NPWS reserve: Mallee Cliffs National Park

Occurs on private land: Yes

Estimated population size: 100-150 (40 active mounds)

Management site map



Management activities to protect the Malleefowl at the site

Threat name	Objective	Action
Foxes	Reduce pest species densities and maintain at low levels	Fox control
Feral goats	Reduce pest species densities and maintain at low levels	Goat control
Fire disrupting breeding/reproduction activities	Avoid hazard reduction during breeding/reproduction season where possible	Fire planning

Monitoring actions

Regular monitoring of species abundance, extent and condition on the site will be conducted to determine population trends through time. The extent and severity of threats will also be monitored to assess the effectiveness of management actions.

Management actions will be adapted, added or removed over time in response to monitoring results, based on maximising the project's effectiveness.

Are you helping to save threatened species?

Tell us about the work you're doing, and find out more about our program - visit <http://www.environment.nsw.gov.au/savingourspecies>.