

NSW Office of Environment & Heritage
NSW National Parks & Wildlife Service

**Northern Inland Branch
Macleay Gorges Reserves
Fire Management Strategy (External) 2018**

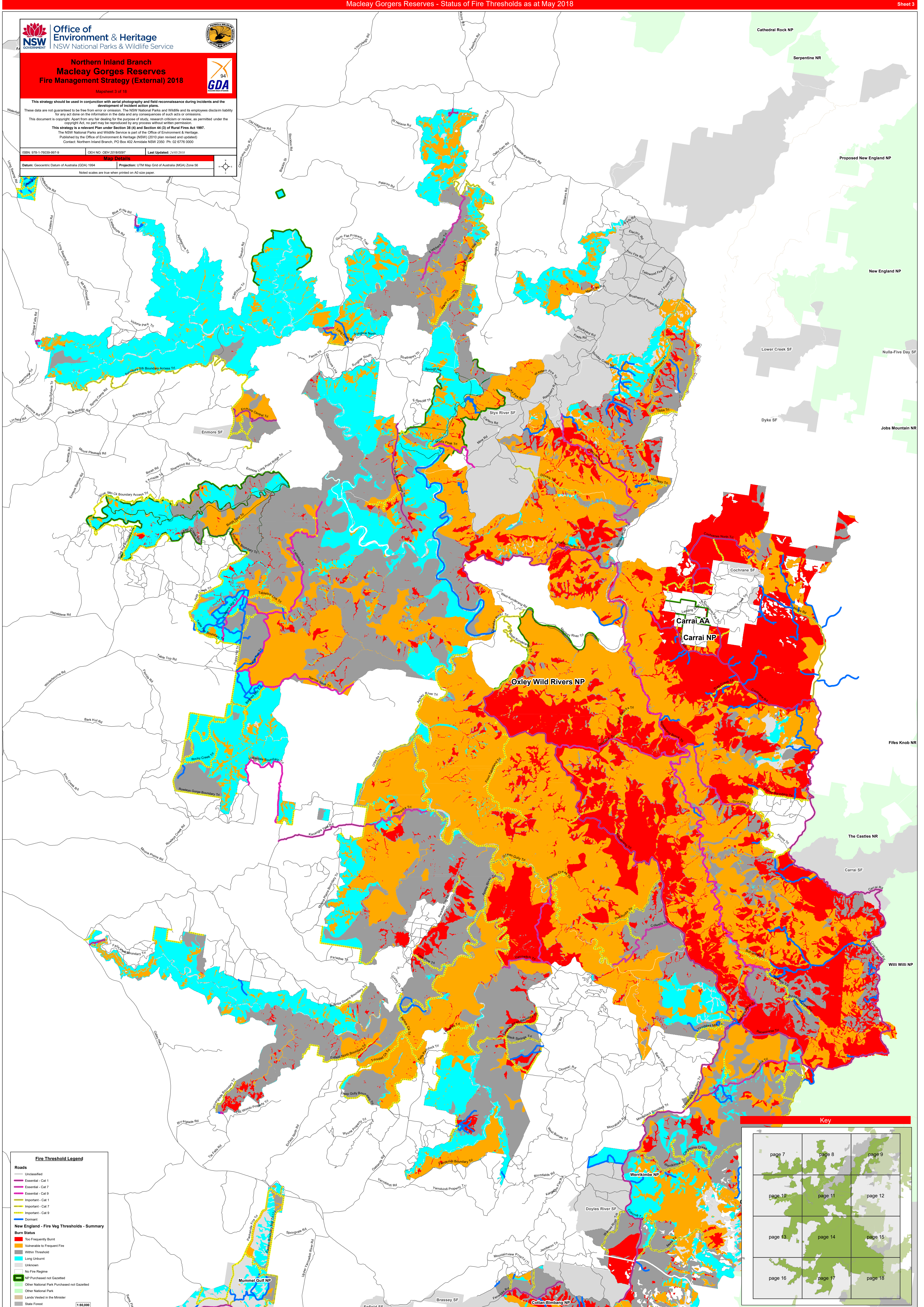
Mapsheet 3 of 18

This strategy should be used in conjunction with aerial photography and field reconnaissance during incidents and the development of incident action plans. These data are not guaranteed to be free from error or omission. The NSW National Parks and Wildlife and its employees disclaim liability for any act done on the information in the data and any consequences of such acts or omissions. This document is copyright. Apart from any fair dealing for the purposes of study, research, criticism or review, as permitted under the copyright ACT, no part may be reproduced by any process without written permission.

This strategy is a relevant Plan under Section 39 (4) and Section 44 (3) of Rural Fires Act 1997. The NSW National Parks and Wildlife Service is part of the Office of Environment & Heritage. Published by the Office of Environment & Heritage (NSW) (2018) plan revised and updated. Contact: Northern Inland Branch, PO Box 402 Armidale NSW 2350. Ph: 02 6776 0000

ISBN: 978-1-76039-897-9 OEH NO: OEH 2018/6997 Last Updated: 24/05/2018

Map Details
Datum: Geocentric Datum of Australia (GDA) 1994 Projection: UTM Map Grid of Australia (MGA) Zone 56
Noted scales are true when printed on A3 size paper.



Fire Threshold Legend

Roads

- Unclassified
- Essential - Cat 1
- Essential - Cat 7
- Essential - Cat 9
- Important - Cat 1
- Important - Cat 7
- Important - Cat 9
- Dominant

New England - Fire Veg Thresholds - Summary

Burn Status

- Too Frequently Burnt
- Vulnerable to Frequent Fire
- Within Threshold
- Long Unburnt
- Unknown
- No Fire Regime

Other

- NP Purchased not Gazetted
- Other National Park Purchased not Gazetted
- Other National Park
- Lands Vested in the Minister
- State Forest

1:80,000

Key

page 7	page 8	page 9
page 10	page 11	page 12
page 13	page 14	page 15
page 16	page 17	page 18