



Return to an enduring landscape

commemoration flat focus

landscape

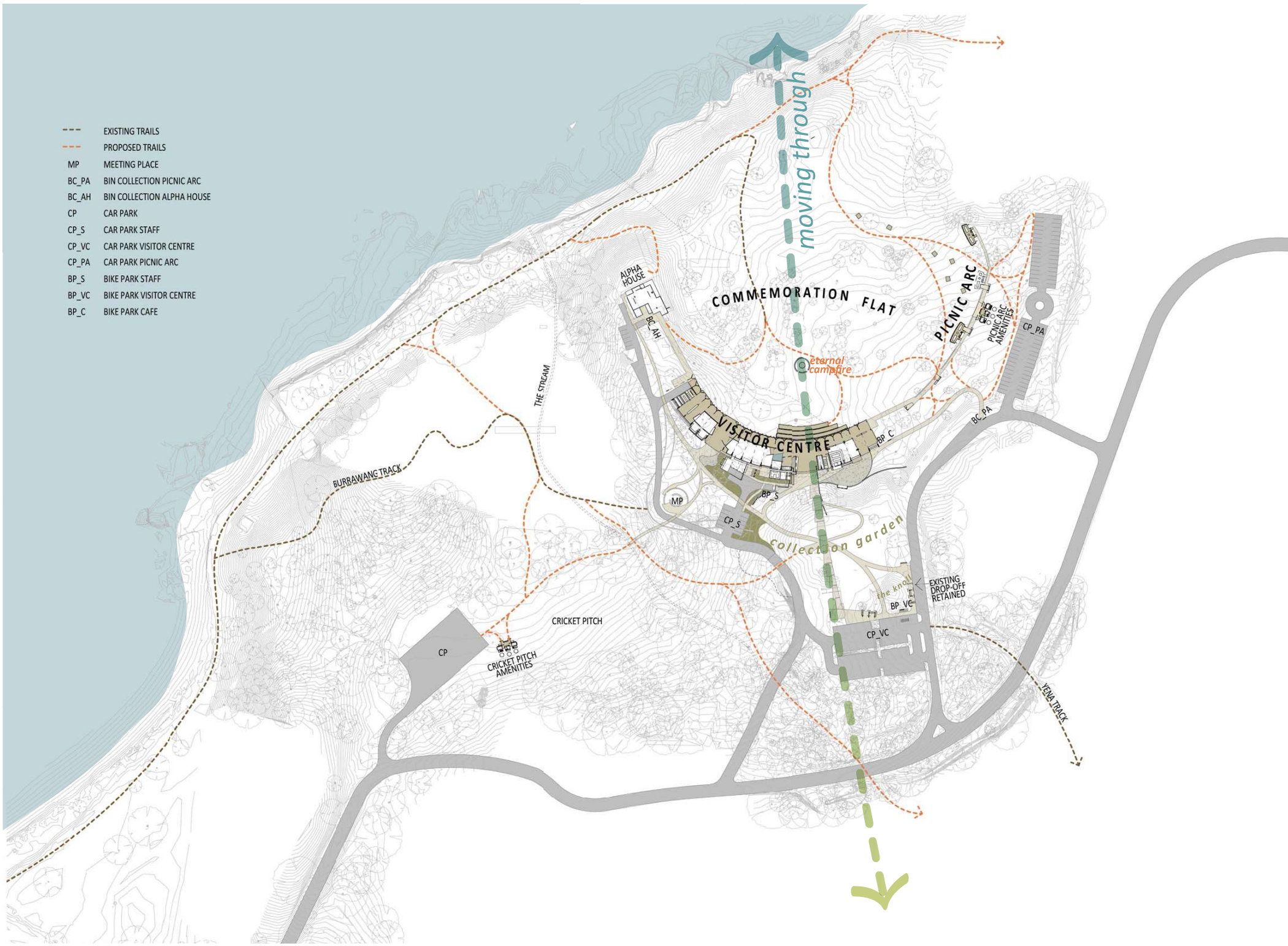
- DIVER'S SHOWER
- INTERPRETATION POINT
- INSCRIPTION WALK
- BEACH SCRUB PATH
- SOLANDER AND SUTHERLAND MONUMENTS
- AMENITIES REMOVED
- HISTORIC TRACK AS ACCESSIBLE PATH TO ALPHA HOUSE
- ALPHA HOUSE
- ALPHA HOUSE INTERPRETATION POINT
- PICNIC AMENITIES ON ARC
- EXISTING CARPARK FULLY RETAINED
- PICTIC ARC
- FORESHORE PLANTING
- STREAM INTERPRETATION AND SIGNAGE
- LA PEROUSE FERRY JETTY
- BANKS MONUMENT
- INTERPRETATION POINT
- WELCOME
- SOUNDSCAPE EQUIPMENT
- LOOP PATH
- COOK'S MONUMENT
- MEETING PLACE
- COLLECTION GARDEN
- EXISTING VISITOR CENTRE TO BE REMOVED
- ARRIVAL
- EXISTING CARPARK FULLY RETAINED
- BUS STOP: EXISTING DROP OFF RETAINED
- CRICKET PITCH
- AMENITIES
- ROAD REALIGNMENT
- EXISTING ROADS FULLY REUSED
- YENA TRACK PARKING
- BEACH PICNIC AREA
- MURU TRAIL PARKING

- masterplan points
- masterplan alternates
- masterplan deletions
- casuarina forest
- picnic areas
- road surfaces
- restored stream
- swales
- - - ferry route

VISITOR CENTRE
SITE PLAN: MASTERPLAN REVIEW



- EXISTING TRAILS
- - - PROPOSED TRAILS
- MP MEETING PLACE
- BC_PA BIN COLLECTION PICNIC ARC
- BC_AH BIN COLLECTION ALPHA HOUSE
- CP CAR PARK
- CP_S CAR PARK STAFF
- CP_VC CAR PARK VISITOR CENTRE
- CP_PA CAR PARK PICNIC ARC
- BP_S BIKE PARK STAFF
- BP_VC BIKE PARK VISITOR CENTRE
- BP_C BIKE PARK CAFE



VISITOR CENTRE
PRECINCT SITE PLAN: MOUNTAINS TO SEA



place of reflection

a platform at the edge of a natural amphitheatre, traversing its length you are aware of a double edge -

at once a vantage to the bay toward the first sighting of the Endeavour, and, then, drawing back, sheltered, a cossetting refuge.

dance ground

the steps

casuarina forest

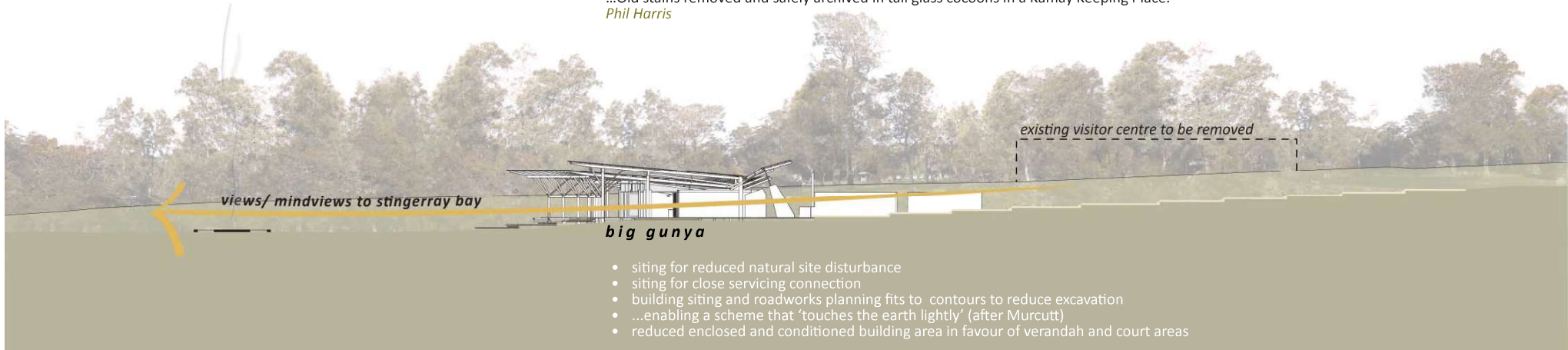
collection garden

- KEY**
- BUFFER TANK
 - c WATER COCLAMON
 - BOH BACK OF HOUSE
 - ES EPHEMERAL SOAKS
 - COURTS: COMPACTED GRANITIC SAND
 - BUFFER LANDSCAPE

VISITOR CENTRE: FLOOR PLAN



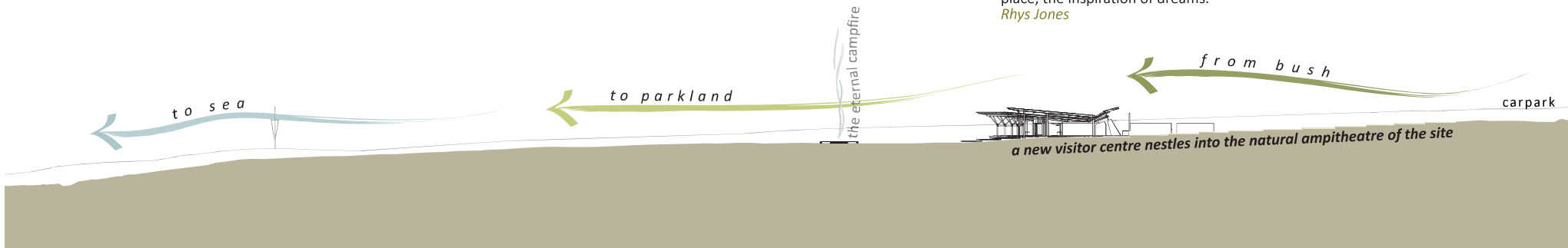
We are not building a monument.
 The Visitor Centre is to be ethereal. It will sit quietly, lightly, assembled to be one day removable,
 and in the meantime to age gracefully.
 It will be very much a (very large) gunya:
 Turning its back to the wind, opening to the campfire, the prospect
 Surface flows under, unimpeded.
 Bush to parkland to cliff to beach; fresh water to sea.
 Come, sit, contemplate, reflect, grow together.
 Here, before and beyond, an enduring landscape re-emerges – perhaps one day monument-free.
 ...Old stains removed and safely archived in tall glass cocoons in a Kamay Keeping Place.
Phil Harris



SECTION THROUGH ENTRY

1:500

"...the 'discoverers' struggling through the surf were met on the beaches by other people looking at them from the edge of the trees. Thus the same landscape perceived by the newcomers as alien, hostile, or having no coherent form, was to the indigenous people their home, a familiar place, the inspiration of dreams."
Rhys Jones



SECTION THROUGH ENTRY

1:1000

forward, wafting between shadowy screening trees:
 the 'eternal campfire'
 at night I can see it flickering from a boat on the water
 memories of fishing women, fires in canoes, fires in home camp
 and seen when flying in and out of the airport
 beaconing to La Per mob and recent history,
Greg Norman

A gunya with back to the wind, opening up for prospect over the bay:
 sitting, sheltered, but with good vantage.

Arms around the Flat bringing everyone together –
 Focus to campfire for informal gatherings/ preparation for conflict!

"The locals clearly spent some time collecting their weapons and gathering at an appropriate spot on the edge of their territory, where they could approach the strangers."
Maria Nugent
Sue Harper



A broken circle, here's the story:
 A collision of 2 worlds
 Meeting on a crescent edge
 Refuge of trees, land specific; expanse of ocean, the wide world.

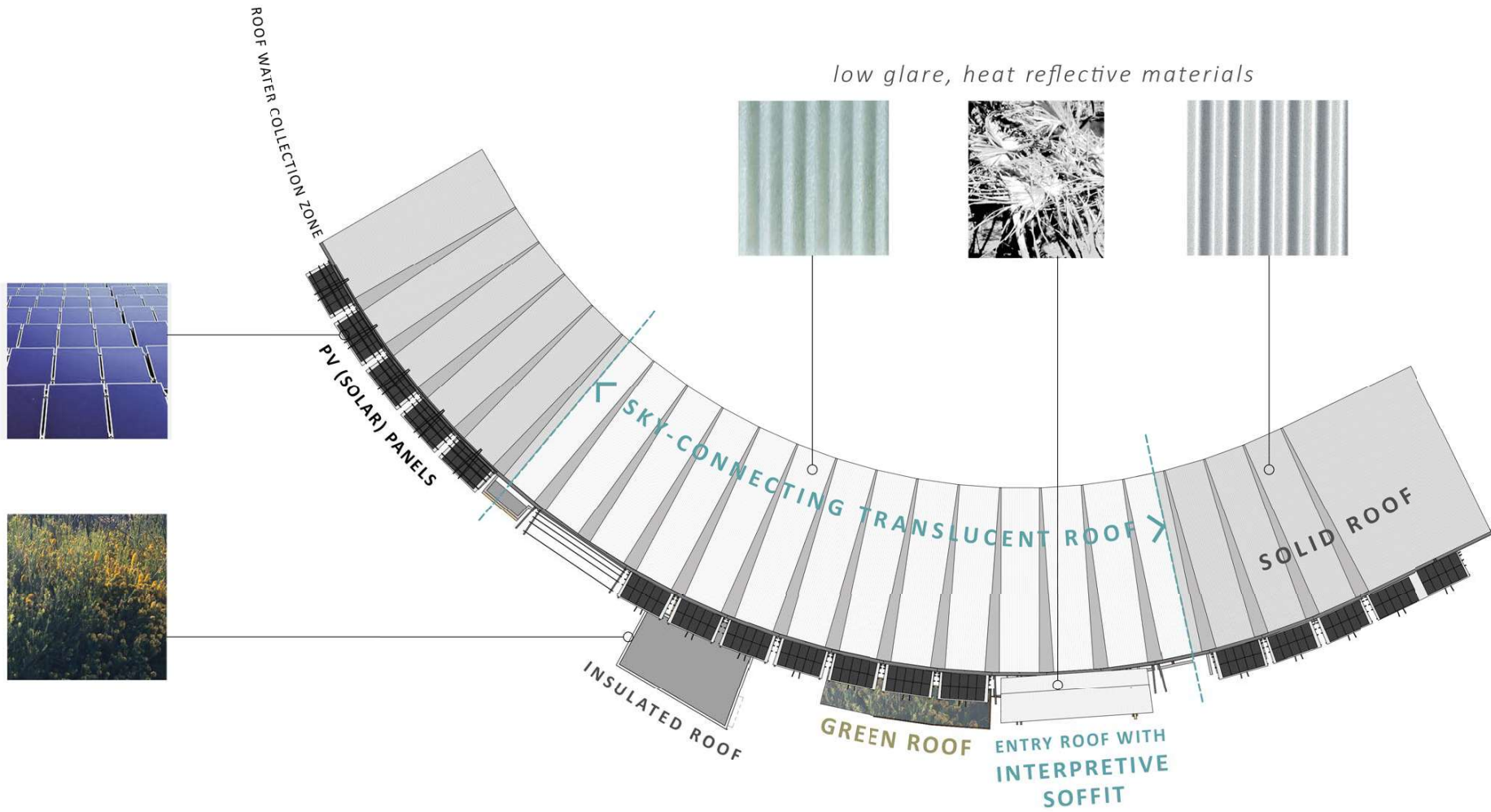
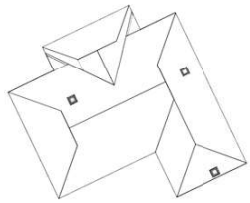
Ancient sounds of Kamay bush, a resonant tongue,
 Country/ song/ one (weave).
 Now a foreign voice, flapping sails, a gunshot crack:
 A new cacophony foretold...

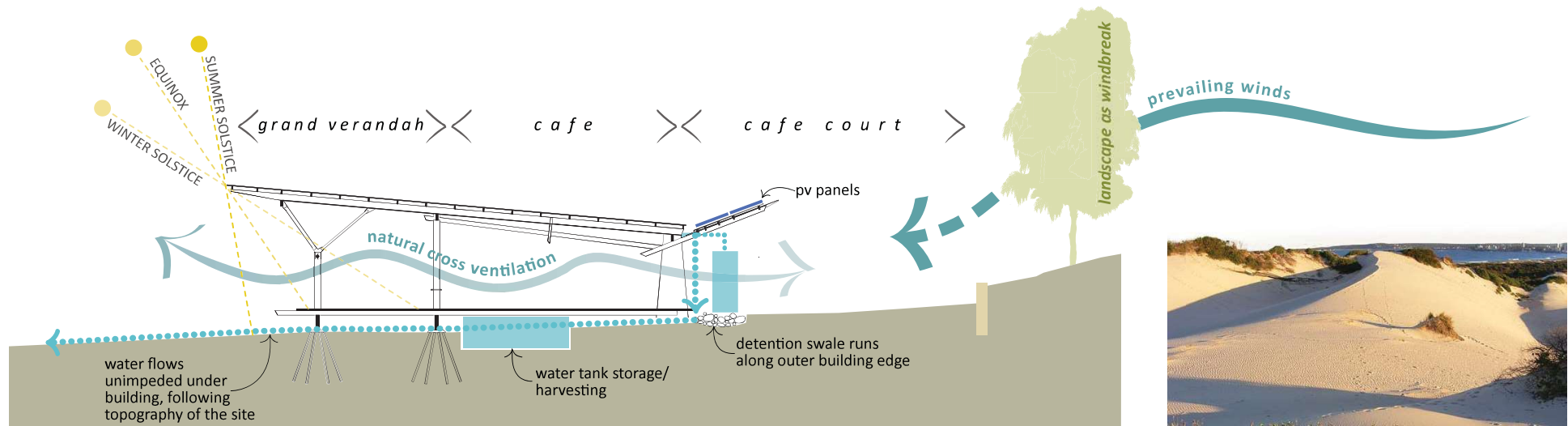
Only 250 turns around the sun:
 Dissembly/ babble/ many (shreds).
 Now sit, reflect, repair:
 Dance, re-join the circle at *Stingerray Bay*.

Stingerray Bay

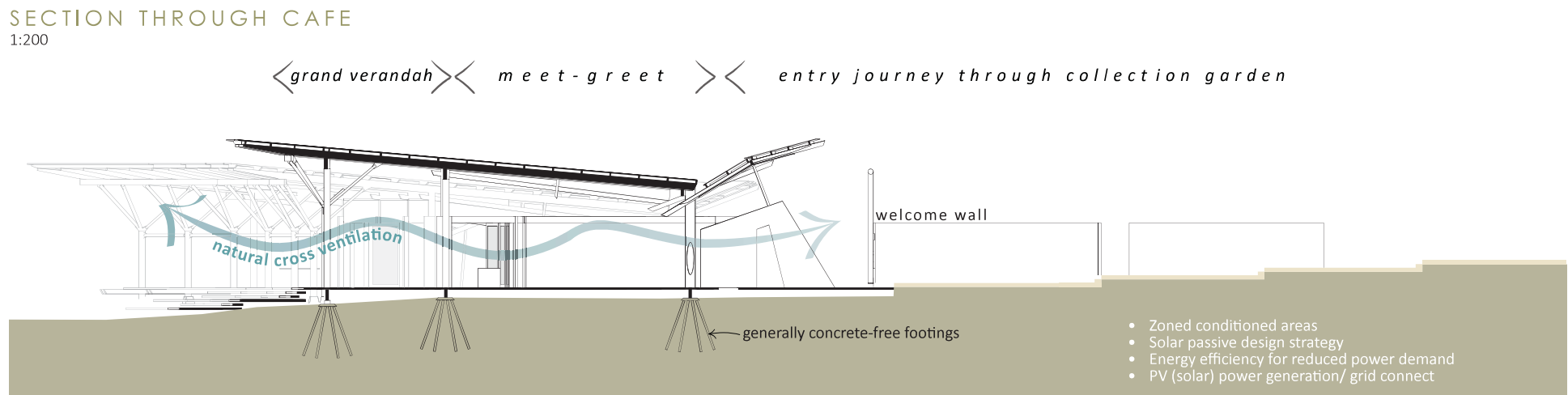
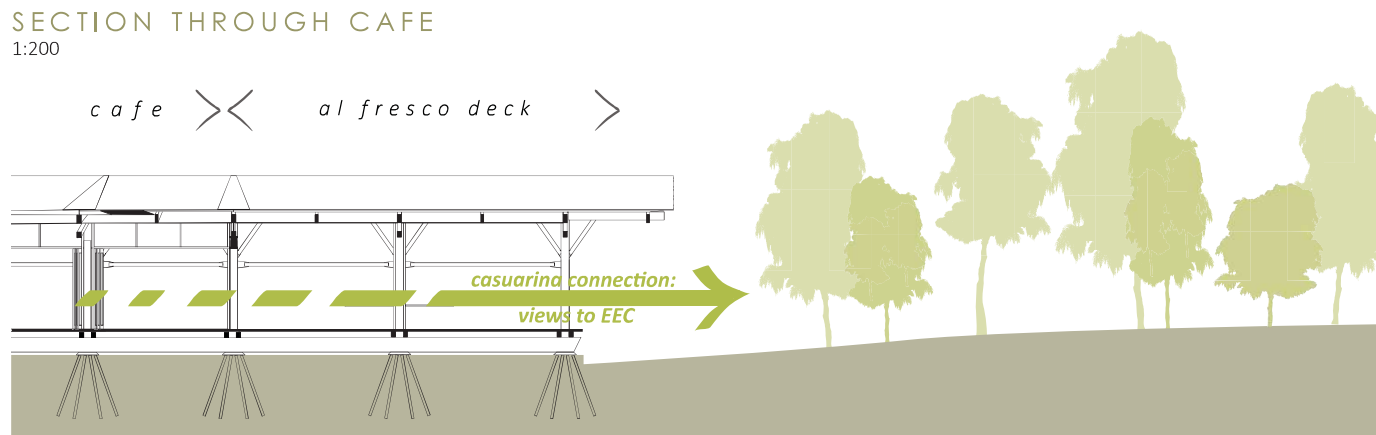


TEXTURES



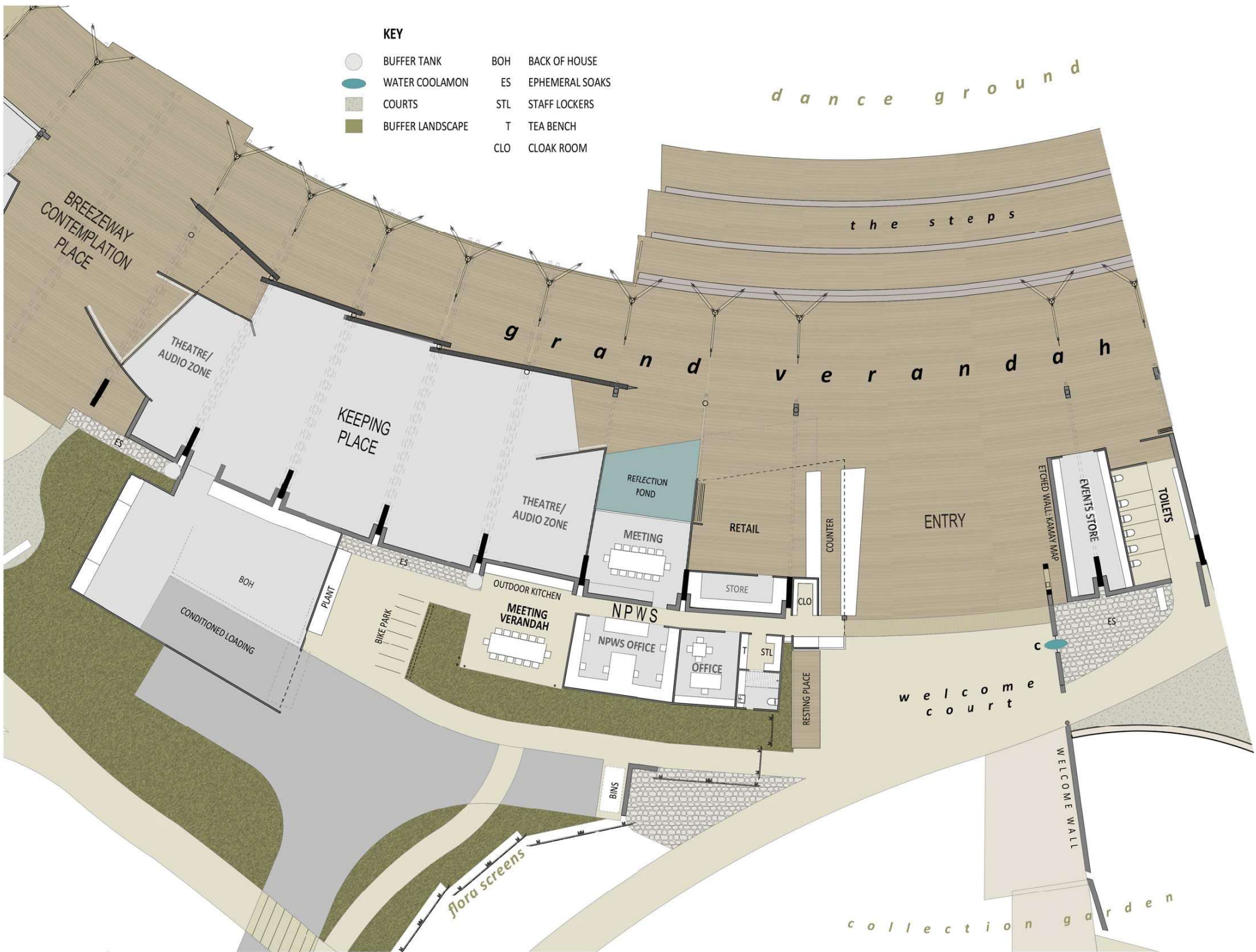


visitor centre as dune
 The windward side rises to a steeper leeward side. The gentle backside of a dune is where the plants always are > Collection Garden.



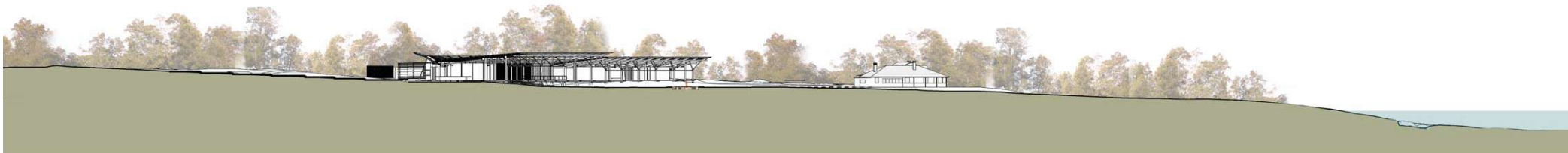
KEY

- BUFFER TANK
- WATER COOLAMON
- COURTS
- BUFFER LANDSCAPE
- BOH BACK OF HOUSE
- ES EPHEMERAL SOAKS
- STL STAFF LOCKERS
- T TEA BENCH
- CLO CLOAK ROOM



VISITOR CENTRE
PART PLAN: ENTRY + KEEPING PLACE





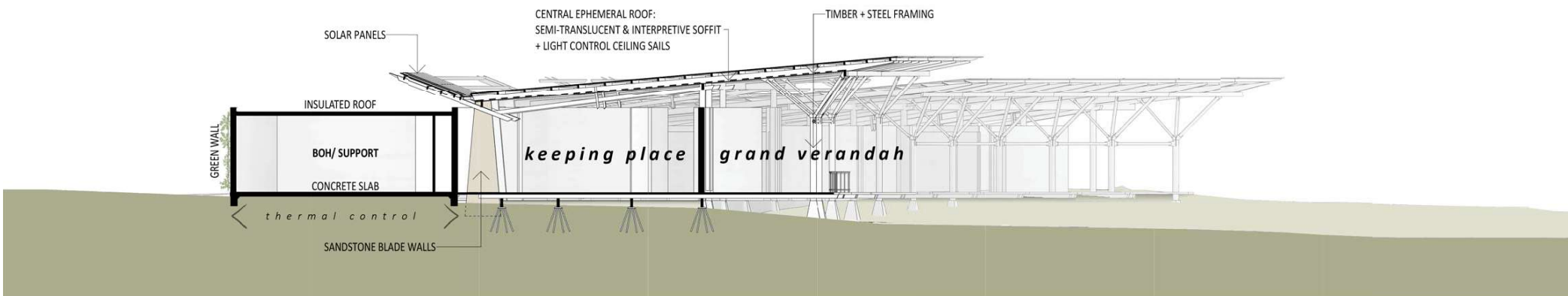
SITE SECTION

1:200



ENTRY

1:200



KEEPING PLACE

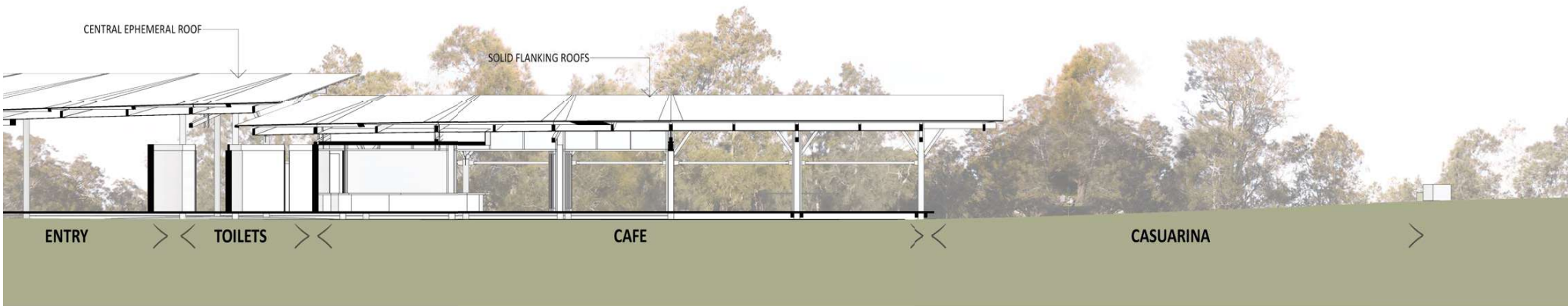
1:200



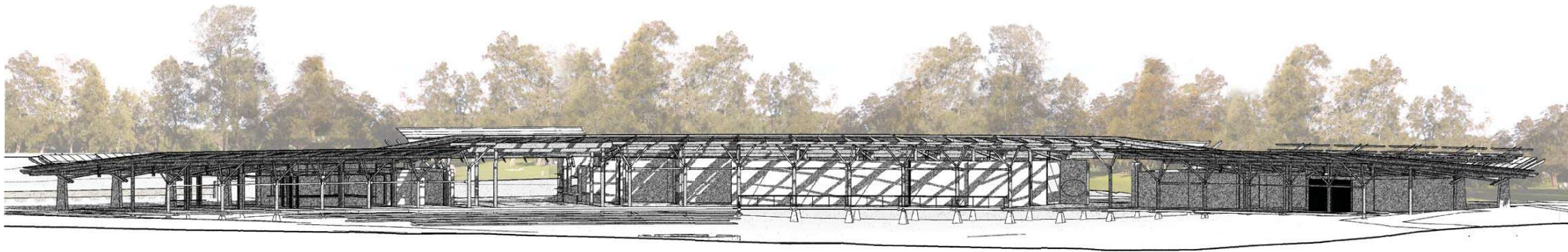
OFFICE
1:200



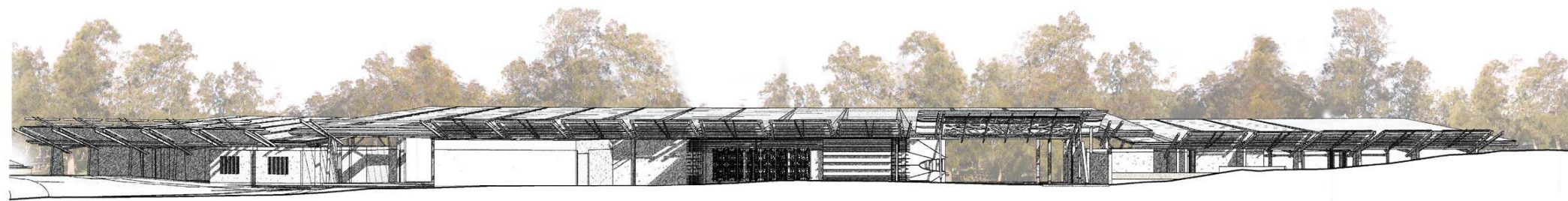
CAFE A
1:500



CAFE B
1:200



NORTH ELEVATION



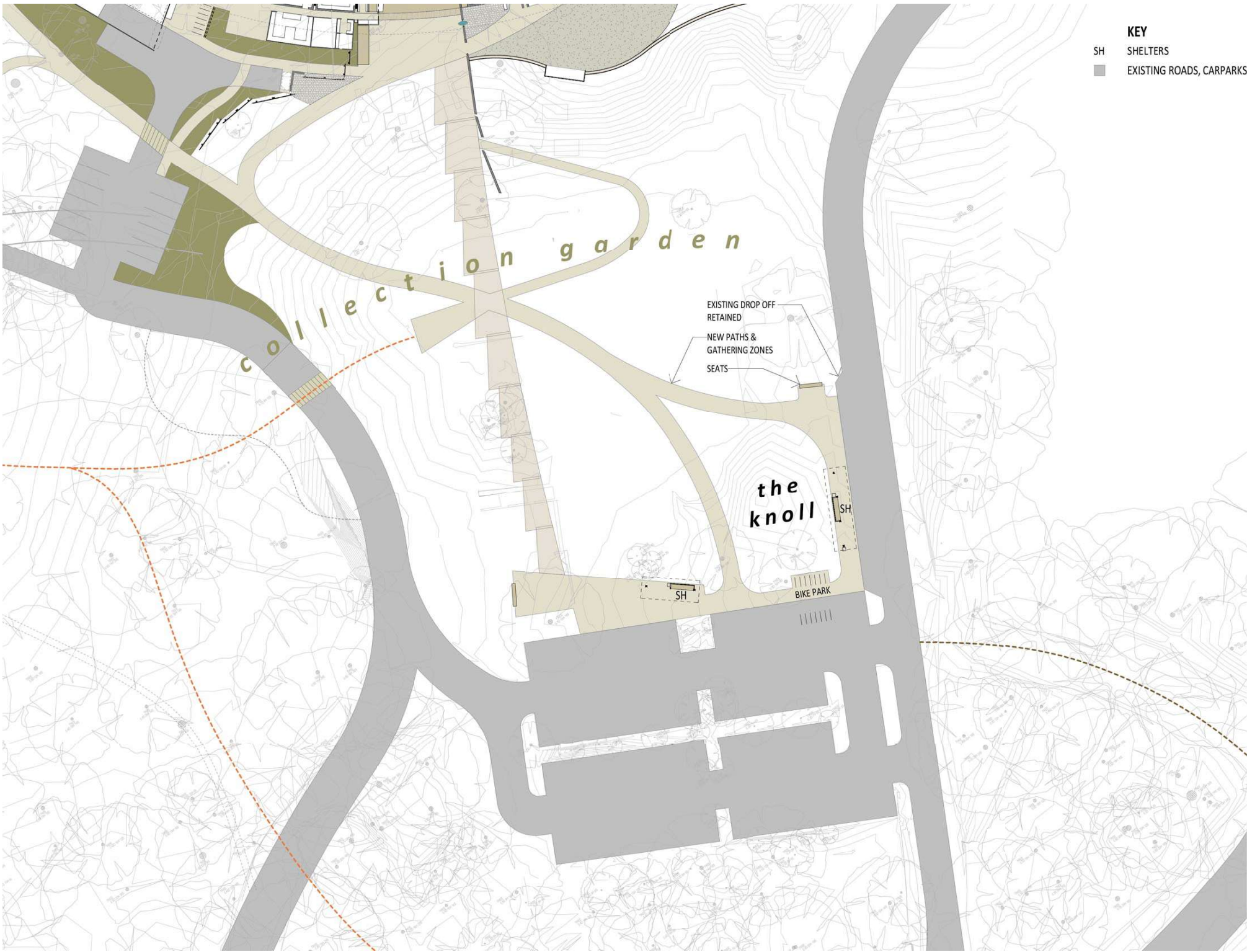
SOUTH ELEVATION

KEY

- CB CHARCOAL BIN
- AP ART/ INTERPS PLINTH
- WF WATER FOUNTAIN
- B BIN (BINS ALSO INTEGRATED IN SHELTERS)
- PS PICNIC/ BBQ SHELTER
- PLATFORM (PICNIC/ SIT ON EDGE/ SUNBAKE)
- EXISTING ROADS, CARPARKS

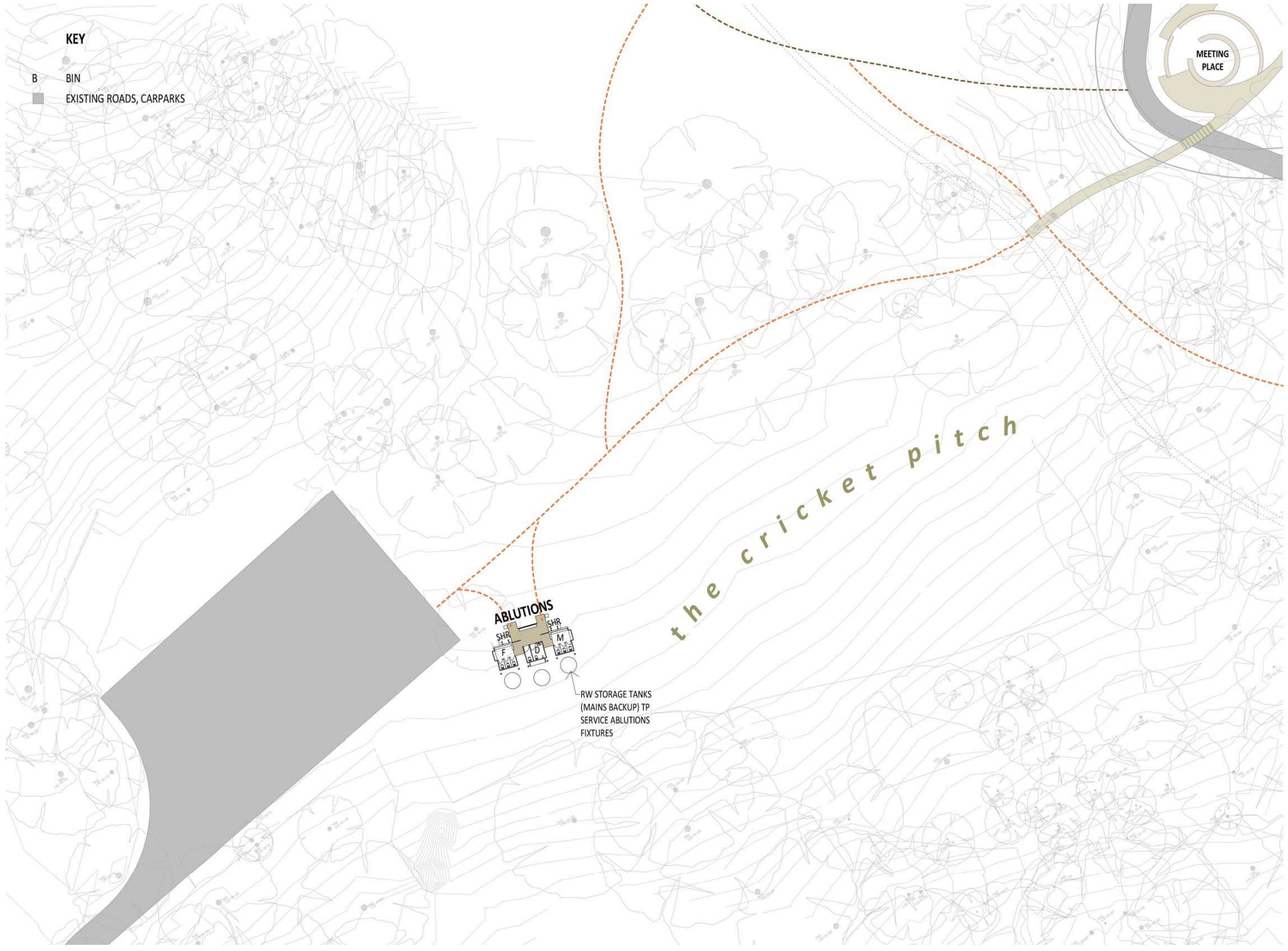


- KEY**
- SH SHELTERS
 - EXISTING ROADS, CARPARKS



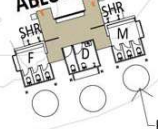
KEY

- B BIN
- EXISTING ROADS, CARPARKS



the cricket pitch

ABLUTIONS



RW STORAGE TANKS
 (MAINS BACKUP) TP
 SERVICE ABLUTIONS
 FIXTURES

MEETING PLACE







VIEWS
THROUGH 1





VIEWS
ENTRY - ON THE FLAT, THE BAY



VIEWS
GRAND VERANDAH CIRCLING WEST



VIEWS
GRAND VERANDAH CIRCLING EAST



VIEWS
COMMEMORATION (CONTEMPLATION) FLAT





WELCOME COURT



TOWARDS COLA



PICNIC ARC TO CASUARINA CAFE



PICNIC ARC



PARKLAND



UP THERE SOMEWHERE

VIEWS
ADDITIONAL VIEWS

DISCLAIMER

This report was prepared by Troppo in good faith exercising all due care and attention, but no representation or warranty, express or implied, is made as to the relevance, accuracy, completeness or fitness for purpose of this document in respect of any particular user's circumstances. Users of this document should satisfy themselves concerning its application to, and where necessary seek expert advice in respect of, their situation. The views expressed within are not necessarily the views of the Department of Planning, Industry and Environment and may not represent Department policy.

© Copyright State of NSW and the Department of Planning, Industry and Environment