

North Coast Region
GUY FAWKES RIVER RESERVES
 Fire Management Strategy (Type 3)
 2006

Sheet 2 of 3

This strategy should be used in conjunction with aerial photography and field reconnaissance during incidents and the development of incident action plans.

These data are not guaranteed to be free from error or omission. The NSW National Parks and Wildlife Service employees disclaim liability for any actions on the information in this strategy and any consequences of such acts or omissions.

This document is copyright. No part may be reproduced by any process without written permission. The NSW National Parks and Wildlife Service is part of the Department of Environment and Conservation. Published by the Department of Environment and Conservation (NSW), 2006.

Contact: NSW National Parks and Wildlife Service, North Coast Region,
 63 Victoria St, GRAFTON NSW 2840, Telephone 65511500

ISBN 978 1 74122 254 5 DEC Number 2006/615 Last Updated: 20 Nov 2006

Department of Environment and Conservation (NSW)

This strategy is a relevant Plan under Section 38(4) and Section 44(3) of Rural Fires Act 1997.

Endorsed by: _____ Date: / /

Director Northern Parks & Wildlife Division

Locality

Datum: AGD66
Projection: UTM
Grid: AMG Zone 56

Noted scales are true when sheet reproduced on 840 X 1175 mm page.

Legend - All Maps

Fire Points

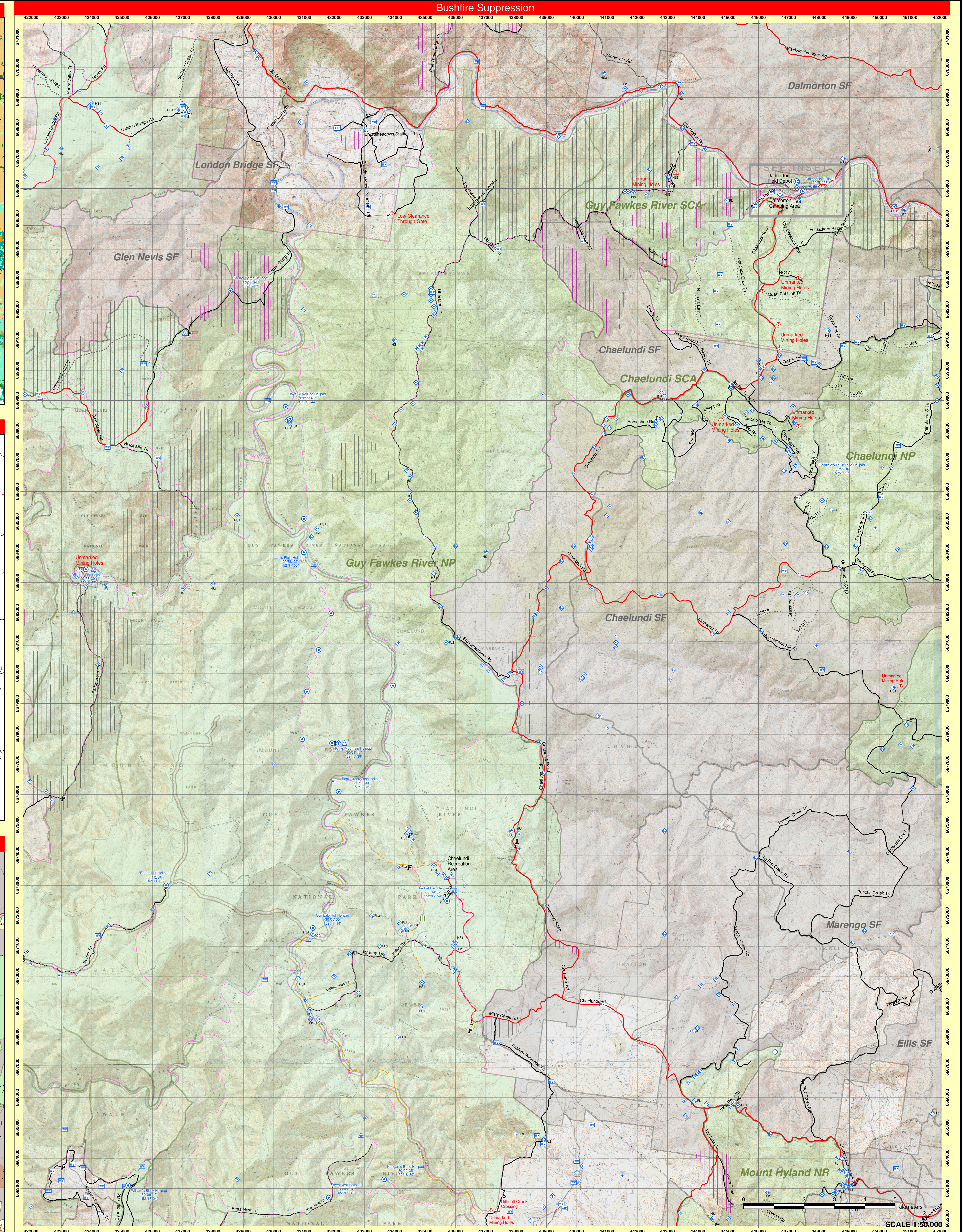
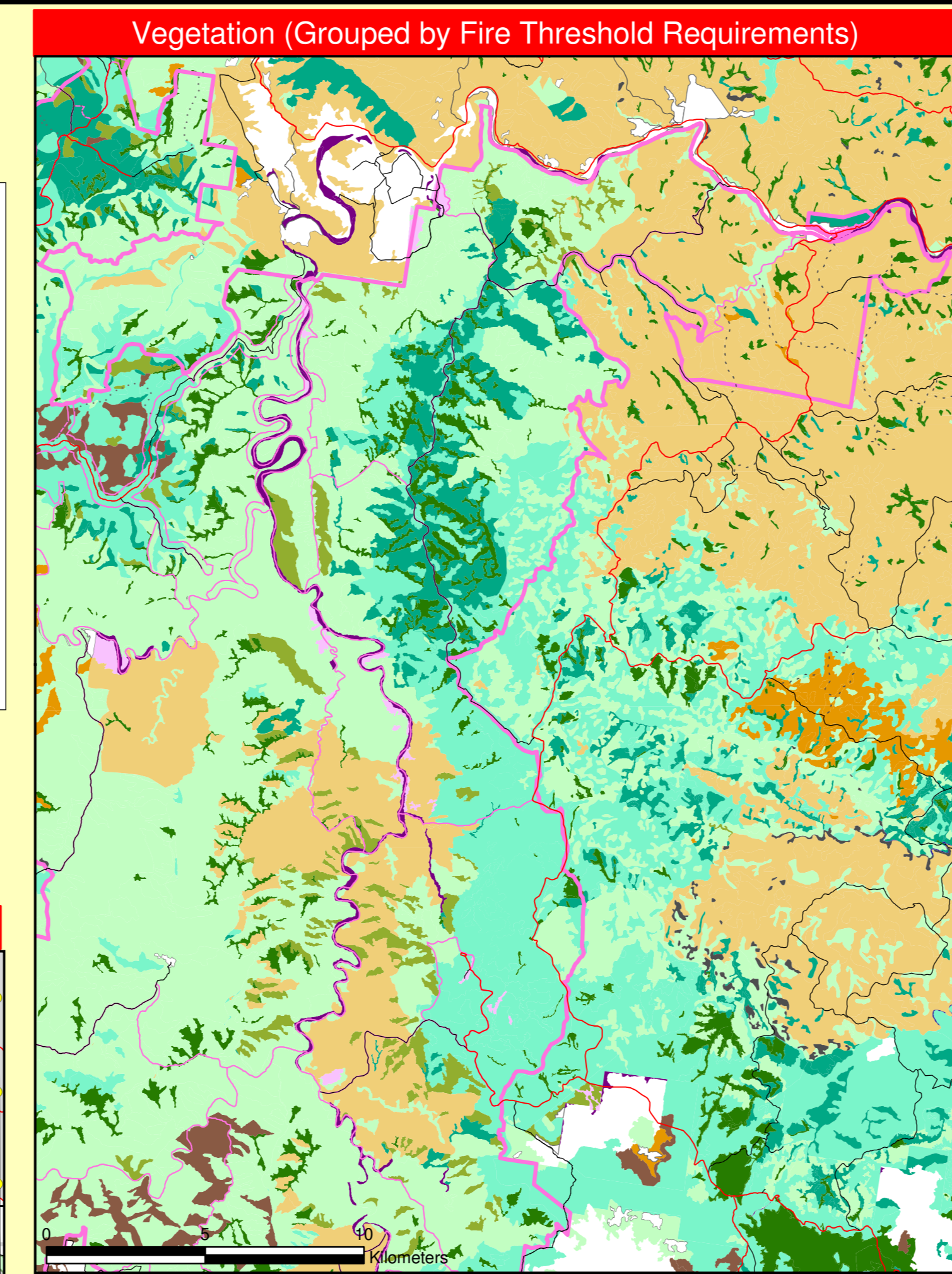
- Aboriginal Site
- Airbase (runway)
- Base Camp
- Bee Hive Site
- Caution (safety hazard)
- Communications Tower or Mobile Repeater Site
- Fire Tower
- Gate - NPWS
- Wetland (not gazetted unless labelled otherwise)
- Gate - on NPWS
- Helipad
- Historic Site
- Loading Ramp
- Past Ignition Points
- Potential Helipad
- Recreation Area
- Refuge Area
- Sign
- Threatened Fauna - see The Spp. Protection Table
- Threatened Flora - c1to
- Threatened Property
- Vantage Point
- Water Point Hill & Veh.
- Water Point Helicopter
- Water Point Vehicle

Roads & linear features

- Primary (Cat 1)
- Secondary (Cat 9)
- Closed
- Proposed Secondary
- Not Classified
- Walking Track
- Powerslines
- Contours
- Contour interval 10 metres

Tenure & areas

- Fires 2005-06
- Fires 2004-05
- Fire Management Zone boundary
- Local Government Area boundary
- Aboriginal Place
- NPWS Estate
- NPWS Purchased
- SF Plantation
- SFNSWS Estate
- Crown Land
- Rainforest
- Wet sclerophyll forest
- Semi-mesic grassy forest
- Grassy dry sclerophyll forest
- Shrubby dry sclerophyll forest
- Grassy sclerophyll woodland
- Swamp sclerophyll forest
- Freshwater wetland
- Grassland/heathland
- River oak forest
- Rock/river bed
- New England Blackbutt group
- Not Applicable



Communications Information

Service	Channel	Location and Comments
NPWS - VHF (incl. incident comms)	28	Southern Guy Fawkes R. Reserve channel 72
NPWS - VHF (incl. incident comms)	29 & 31	North Guy Fawkes R. Reserve channels 69 & 75
NPWS - VHF (Portable Repeater)	15	Stored at Glen Innes / transportable.
NPWS - VHF (Portable Repeater)	14 Orange	Contact Dorrigo Plateau Area office to deploy.
NPWS - VHF (Portable Repeater)	16 Brown	Contact Dorrigo Plateau Area office to deploy.
NPWS - RFS (X-band Repeater)	Multiple	Stored at Glen Innes / transportable. Full range of simple & duplex NPWS VHF & RFS PMR Chls.
RFS - FM - UHF	62	Equip. To Ch. 13 on Dorrigo I.M.T. radio.
RFS - GRN	-	No service available in NTR.
CH - UHF (freight haul)	1 - 59	Choose channel at fire with R and RFS.
State Reserve NSW - VHF	7 & 34	Equip. To Ch. 83 & 80 on NPWS VHF radio.
Aircraft - VHF	23	Equip. To Ch. 83 & 80 on NPWS VHF radio.
Mobile Phone - CDMA	23	Patchy coverage.
Satellite Phones		Require clear view of the sky.
North Coast	04 1511 6201	Both in MC Registered and communication vehicles.
North Coast	04 1615 5613	
Nthn Tablelands (N 2010) 010		Glen Innes Office
Nthn Tablelands (N 2010) 014		Armidale Office

Operational Guidelines

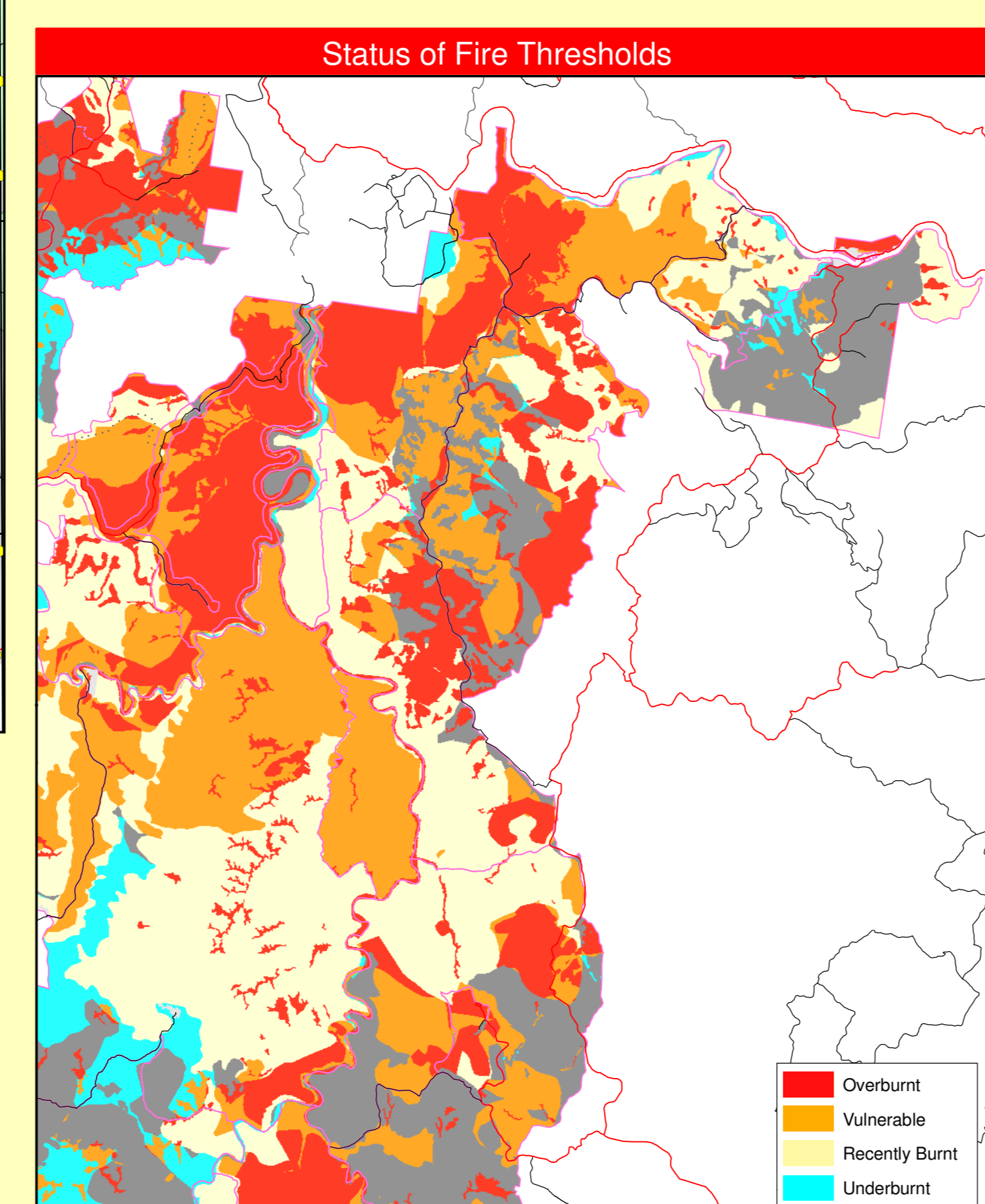
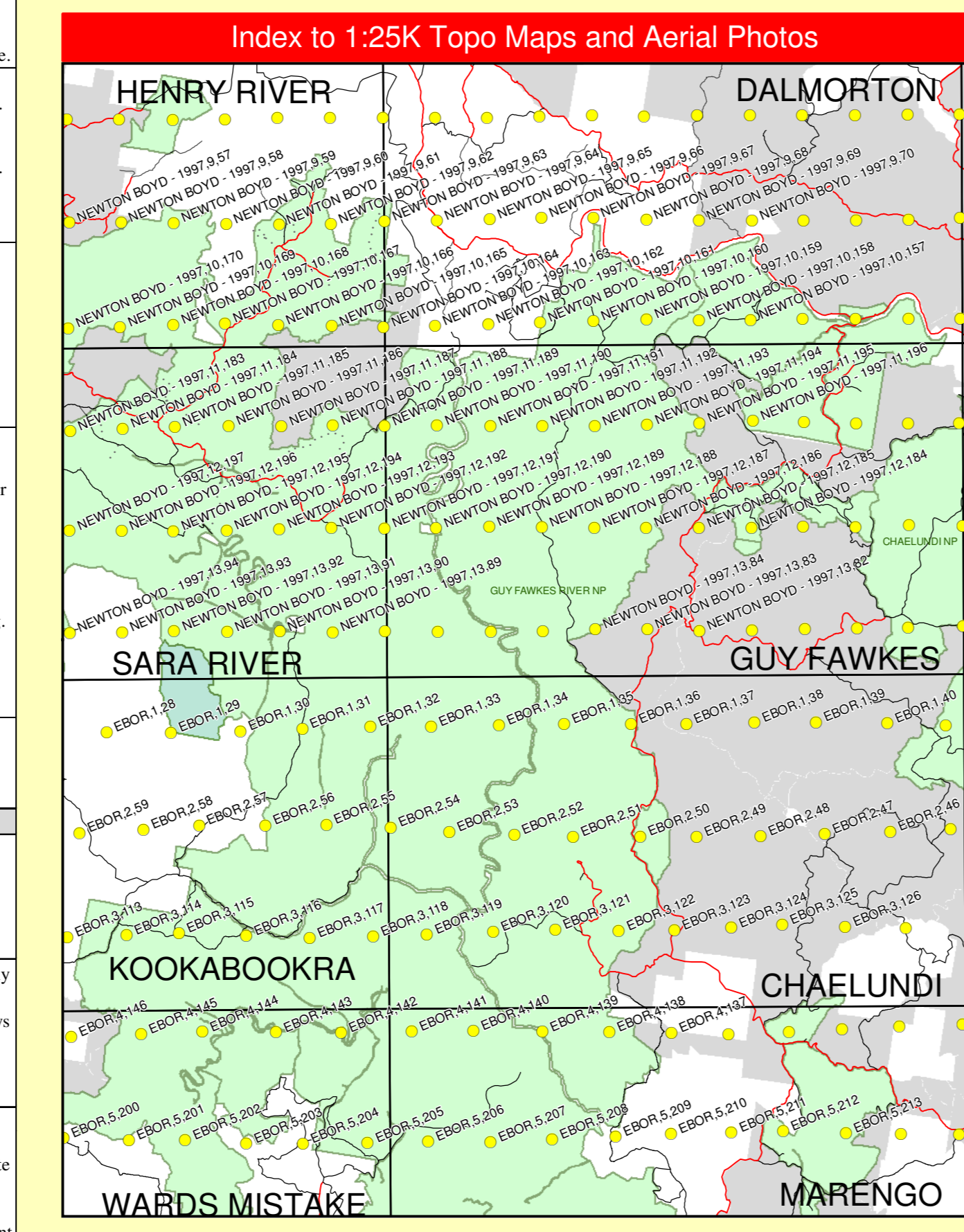
Refer to Strategy for Fire Management 2003 and Fire Management Manual 2004. Brief all personnel involved in suppression operations on the following issues:

Resources

- Aboriginal site locations are not shown on the exhibited strategy for confidentiality. Liaise with the relevant DEC Aboriginal Heritage Officer to check for sites.
- Aboriginal Heritage Prescription:
 - AH1 - As far as possible, protect site from fire. Do not cut down trees. Use of foams, writing agents and retardant is acceptable.
 - AH2 - As far as possible, protect site from fire. Avoid ground disturbance including handtools and dozers. Avoid water bombing that may cause ground disturbance. Avoid ground disturbance including waterbombing. Avoid water bombing that may cause ground disturbance. Site may be burnt by wildfire, backburn or prescribed burn if unavoidable.
 - AH3 - Avoid all ground disturbance including waterbombing.

Guidelines

- Historic Heritage Prescription:
 - HS1 - Protect site from fire and maintain an asset protection buffer around site. Avoid all ground disturbance including waterbombing. Use of foams, writing agents and retardant is acceptable.
 - HS2 - Protect site from fire and maintain an asset protection buffer around site. Avoid all ground disturbance including waterbombing. Avoid use of foams, writing agents and retardant.
 - HS3 - Avoid all ground disturbance including waterbombing.
- Threatened Fauna Prescription:
 - Refer to "Fire Suppression Chemicals" and accompanying report. Where practicable, protect habitat areas and trees from the fire if the effects of the resulting fire frequency, season or intensity will have a significant or unknown impact.
 - Threatened Fauna Prescription:
 - Where possible, exclude fire from areas of Old Growth Habitat - As far as possible, protect old growth habitat trees.



Contact Information

Agency	Position / Location	Phone	Mobile/Fax/Pager
National Parks & Wildlife North Coast	Regional Duty Officer - North Coast	0628 241 799	018 30161 (pager)
	Dorrigo Plateau Area Manager	02 6657 2309	0427 199030
	Fire Management Officer - North Coast	02 6776 0014	0427 250222
	Regional Operations Coordinator - Nth Coast	02 6641 1508	0409 220618
	Dorrigo Plateau Area Office & A/H diverted (Business Centre) Done Rd, Dorrigo 2453	02 6657 2309	02 6657 2154 (fax)
	Incident Room - Dorrigo Office	02 6657 2309	
	Plataou Depot, Casuarina St, Dorrigo	02 6657 2942	
	Elber Depot	02 6775 9157	02 6775 9163 (fax)
	Dalmorton Hq. Old Glen Innes-Grafton Rd. Tallanganda Field Depot, Paddys Land Rd.	02 6657 8588	
	North Coast Regional Office - Grafton	02 6776 0000	02 6771 1894 (fax)
National Parks & Wildlife Northern Tablelands	Regional Duty Officer - Northern Tablelands	02 6732 5133	018 30161 (pager)
	Glen Innes Area Manager	02 6776 0014	0409 220613
	Fire Management Officer - Northern Tablelands	02 6776 0000	02 6771 1894 (fax)
	Regional Operations Coordinator - Northern Tablelands	02 6732 5133	0427 807058
Rural Fire Service	Fire Ops Room - Glen Innes	02 6732 5133	02 6732 5130
	Fire Ops Room - Glen Innes	02 6732 5133	
	Fire Ops Room - Glen Innes	02 6732 5133	
	Fire Ops Room - Glen Innes	02 6732 5133	
Forests NSW	24 hour calls for fire emergency assistance	000	
	Fire Control Centre - Clarence Valley	02 6644 5135	0900 881866
	Fire Control Centre - Guyra	02 6671 2400	0412 581236
	Fire Control Centre - Glen Innes	02 6732 7046	0428 699116
Ambulance (NSW) Fire Brigade	24 hour emergency calls for assistance	000	
	24 hour calls for fire emergency assistance	000	
	Dorrigo Station	02 6657 2584	
	Clarence Valley	02 6641 7300	02 6641 7271 (fax)
Local Aboriginal Land Councils	Guya	02 6779 1577	02 6779 1223 (fax)
	Glen Innes	02 6732 5131	02 6732 3764 (fax)
	Grafton - Ngarric	02 6732 5131	
	Guya	02 6779 1803	
Police	24 hour emergency calls for Police assistance	000	
	Police Assistance Line (PAL)	02 6657 2044	131444
	Dorrigo Station	02 6732 9799	
	Guya Station	02 6732 9799	
State Emergency Service	24 hour emergency calls for assistance	132500	
	24 hour emergency calls for assistance	02 6657 2605	
	Nyabinda Unit	02 6649 1100	
	Nyabinda Unit	02 6649 1100	

Strategy Information

Fire Season Information

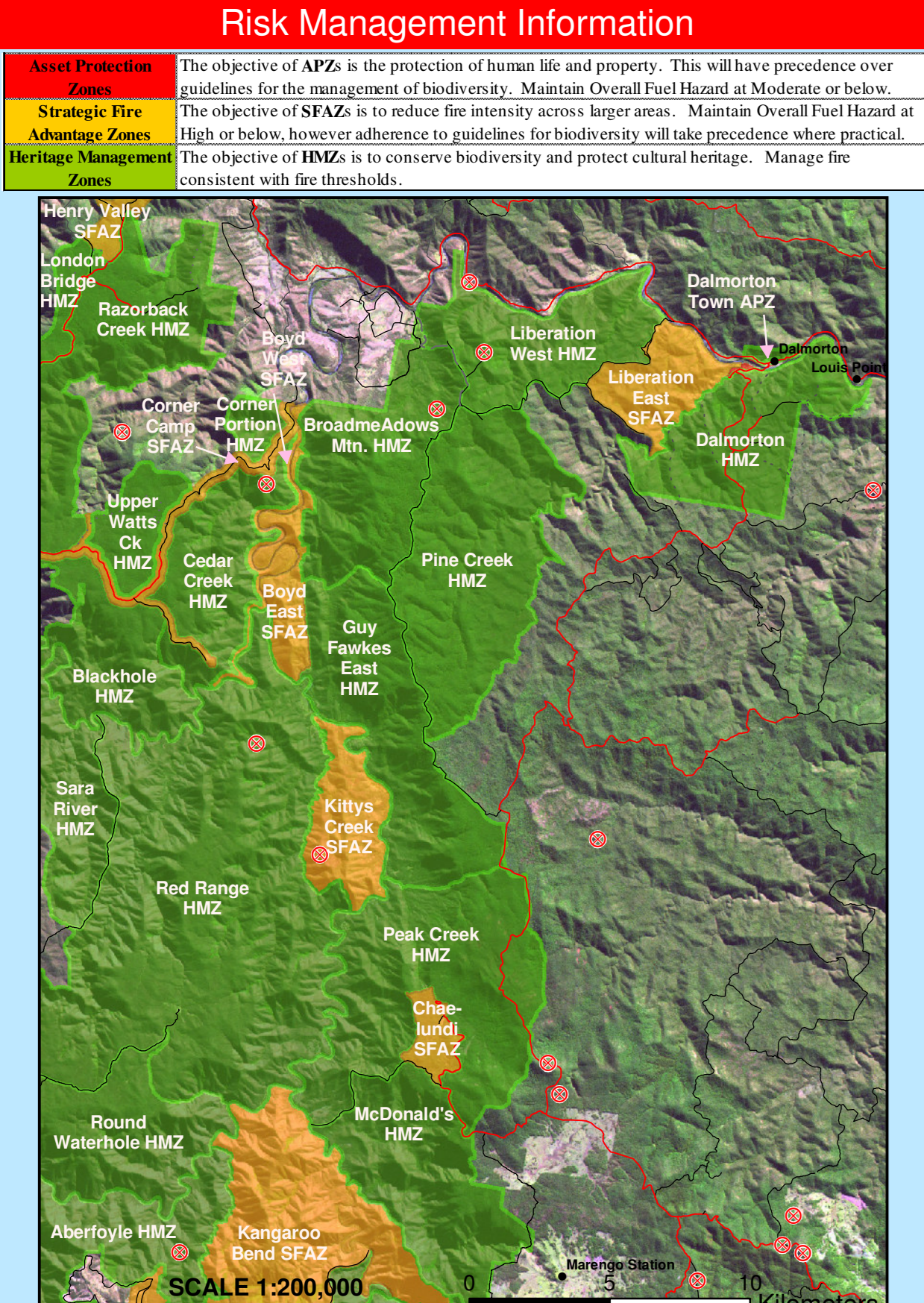
- Wildfires on the Tablelands have been known to start in late winter, but large fire events are most likely to occur during September to December. This period may extend into January in other years. In very dry seasons, high intensity fires exhibiting extreme fire behaviour may occur under smoky conditions.

Prescribed Burns (NPWS Fire Management Manual 4.7)

- Prescribed burning is usually undertaken in late Autumn to Winter. Burning is possible in early Spring but not desirable on a regular basis for ecological or tourism management purposes.

Suppression Strategies

Current FDR	Forecast FDR	*Fire Danger Rating	Strategy
Low - Med	Low - Med	Underburn	Underburn direct, parallel or indirect attack along pre-existing containment lines. Where practicable, consider maintaining the fire area in accordance with the requirements of any proposed prescribed burns.
Low - Med	>= High	Underburn	In order to minimise the fire area and secure the flanks as soon as possible, undertake direct, parallel or indirect attack along the closest containment lines. Pay particular attention to the flank on the next predicted down wind side.
High	All	Underburn	Undertake indirect attack along pre-existing or new containment lines. Secure and deepen containment lines along the next predicted downwind side of the fire. If applicable, consider broader than normal containment strategies to avoid wasted effort and high risk of failure.
All	All	Underburn	Ensure there is sufficient time to secure containment lines prior to the fire impacting upon them; otherwise fall back to the next potential line.



Fire Suppression Chemicals

NPWS FMM 4.2.20 & 4.3

- Writing and foaming agents (surfactants) are permitted for use in wildfire suppression.
- The use of fire retardant is only permitted with the prior consent of the senior NPWS officer, and should be avoided where reasonable alternatives are available.
- Exclude the use of surfactants and retardants within 50m of watercourses, dams and swamps.
- Area where fire suppression chemicals are used must be mapped and the used product name recorded.
- Observe the Threatened Species Operational Guidelines.

Rehabilitation

NPWS FMM 5.1

- Where practicable, containment lines should be stabilised and rehabilitated as part of the wildfire suppression operation.
- The potential impacts of smoke and possible mitigation tactics must be considered when planning for wildfire suppression and prescribed burning operations.
- If smoke becomes a hazard on local roads or highways, the police and relevant media must be notified.
- The reserve may be closed to the public during periods of extreme fire danger or during wildfire suppression operations.

