

North Coast Region
GUY FAWKES RIVER RESERVES
 Fire Management Strategy (Type 3)
 2006
 Sheet 1 of 3

This strategy should be used in conjunction with aerial photography and field reconnaissance during incidents and the development of incident action plans. These data are not guaranteed to be free from error or omission. The NSW National Parks and Wildlife Service and its employees accept liability for any action taken on the information in this strategy and any consequences of such actions or omissions. This document is copyright. Apart from any use permitted for the purposes of study, research, criticism or review, as permitted under the Copyright Act, no part may be reproduced by any process without written permission. The NSW National Parks and Wildlife Service is part of the Department of Environment and Conservation, published by the Department of Environment and Conservation (NSW), 2006.
 Contact: NSW National Parks and Wildlife Service, North Coast Region,
 3 Victoria St., GRAFTON NSW 2460. Telephone: 66511000
 ISBN 978 1 74122 354 5 DEC 2006/615 Last Updated: 20 Nov. 2006
 Department of Environment and Conservation (NSW) This strategy is a relevant Plan under Section 38 (1) and Section 44 (3) of Rural Fires Act 1997.

Endorsed by: _____ Date: / /
 Director Northern Parks & Wildlife Division

Locality

Datum: AGD66
Projection: UTM
Grid: AMG Zone 56
Noted scales are true when sheet reproduced on 840 X 1375 mm page.

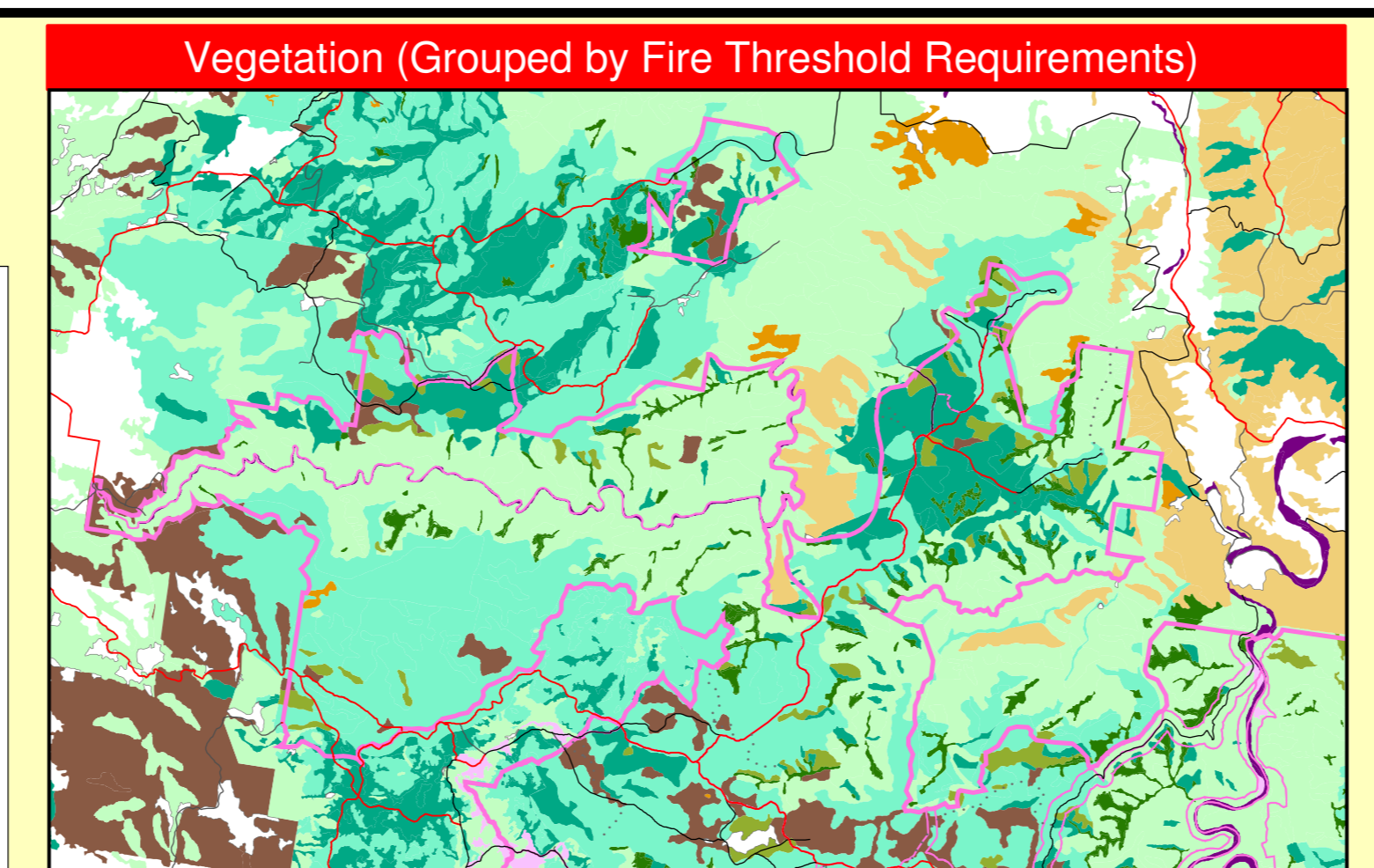
Legend - All Maps

Roads & linear features
 Primary (Cat 1)
 Secondary (Cat 9)
 Closed
 Proposed Secondary
 Waking Track
 Powerlines
 Contours
 Contour interval 10 metres

Fire Points
 Aboriginal Site
 Airbase (airway)
 Base Camp
 Bee Hive Site
 Caution (safety hazard)
 Communications Tower or Mobile Repeater Site
 Fire Tower
 Cable - NPWS
 Assume all gates are locked unless indicated otherwise
 Gate - non NPWS
 Helipad
 Historic Site
 Loading Ramp
 Past Ignition Points
 Potential Helipad
 Recreation Area
 Refuge Area
 Sign
 Staging Area
 Threatened Fauna - see 'Threatened Flora - ditto'
 Threatened Property
 Water Point
 Water Point Helix & Veh.
 Water Point Helicopter
 Water Point Vehicle

Tenure & areas
 Fires 2005-06
 Fires 2004-05
 Fire Management Zone boundary
 Local Government Area boundary
 Aboriginal Place
 NPWS Estate
 NPWS Purchased not Gazetted
 SF Plantation
 SFSWS Estate
 Crown Land

Vegetation
 Rainforest
 Wet sclerophyll forest
 Semi-mesic grassy forest
 Grassy dry sclerophyll forest
 Shrubby dry sclerophyll forest
 Grassy sclerophyll woodland
 Swamp sclerophyll forest
 Freshwater wetland
 Grassland/herbfield
 River oak forest
 Rock/river bed
 New England Backbutt group
 Not Applicable



Communications Information

Service	Channel	Location and Comments
NPWS - VHF (incl. incident comm's)	28	Southern Guy Fawkes R. Reserve channel 72.
NPWS - VHF (incl. incident comm's)	23 & 31	North Guy Fawkes R. Reserve channels 69 & 75
NPWS - VHF (Portable Repeater)	15	Shoed at Glen Innes / transportable.
NPWS - VHF (Portable Repeater)	14 Orange	Contact Dorrigo Plateau Area office to deploy.
NPWS - VHF (Portable Repeater)	16 Branch	
NPWS / RFS (X-band Repeater)	Multiple	Shoed at Glen Innes / transportable. Full range of simplex & duplex NPWS VHF & RFS PMR Ch.s.
RFS - FMR - UHF	62	Equip. To Ch. 13 on Dorrigo IMT radio.
RFS - GRN	-	No service available in NTR.
CB - UHF (fireground chat)	1-99	Choose channel at fire with IC and RFS.
State Forests NSW - VHF	7 & 24	Equip. To Ch. 83 & 80 on NPWS VHF radio.
Aircraft - VHF	32	
Mobile Phone - CDMA		Patchy coverage.
Satellite Phones		Require clear view of the sky.
North Coast - 04 1511 6201		Both in NC Regional communications vehicle.
04 1615 5613		
Tablelands 04 2010 2022		
0417 154 353		Glen Innes Office
		Armidale Office

Operational Guidelines
 Refer to Strategy for Fire Management 2003 and Fire Management Manual 2004. Brief all personnel involved in suppression on the following issues:

Resources
 Aboriginal Cultural Heritage Site Management NPWS FMM 4.11)
 NPWS Estate
 NPWS Purchased not Gazetted
 SF Plantation
 SFSWS Estate
 Crown Land

Historic Heritage Prescriptions
 HSI - Protect Site from fire and maintain an asset protection buffer around Site. Avoid all ground disturbance including waterbombing. Use of foams, wetting agents and retardant is acceptable. Do NOT cut down trees. As far as possible, protect Site from fire. Avoid ground disturbance including handsooks and dozers. Avoid water bombing that may cause ground disturbance. Avoid ground disturbance including handsooks and dozers. Avoid water bombing that may cause ground disturbance. Site may be burnt by wildfire, backburn or prescribed burn if unavoidable.

Historic Heritage Prescriptions
 HSI - Protect Site from fire and maintain an asset protection buffer around Site. Avoid all ground disturbance including waterbombing. Use of foams, wetting agents and retardant is acceptable. Do NOT cut down trees. As far as possible, protect Site from fire. Avoid ground disturbance including handsooks and dozers. Avoid water bombing that may cause ground disturbance. Avoid ground disturbance including handsooks and dozers. Avoid water bombing that may cause ground disturbance. Site may be burnt by wildfire, backburn or prescribed burn if unavoidable.

Contact Information

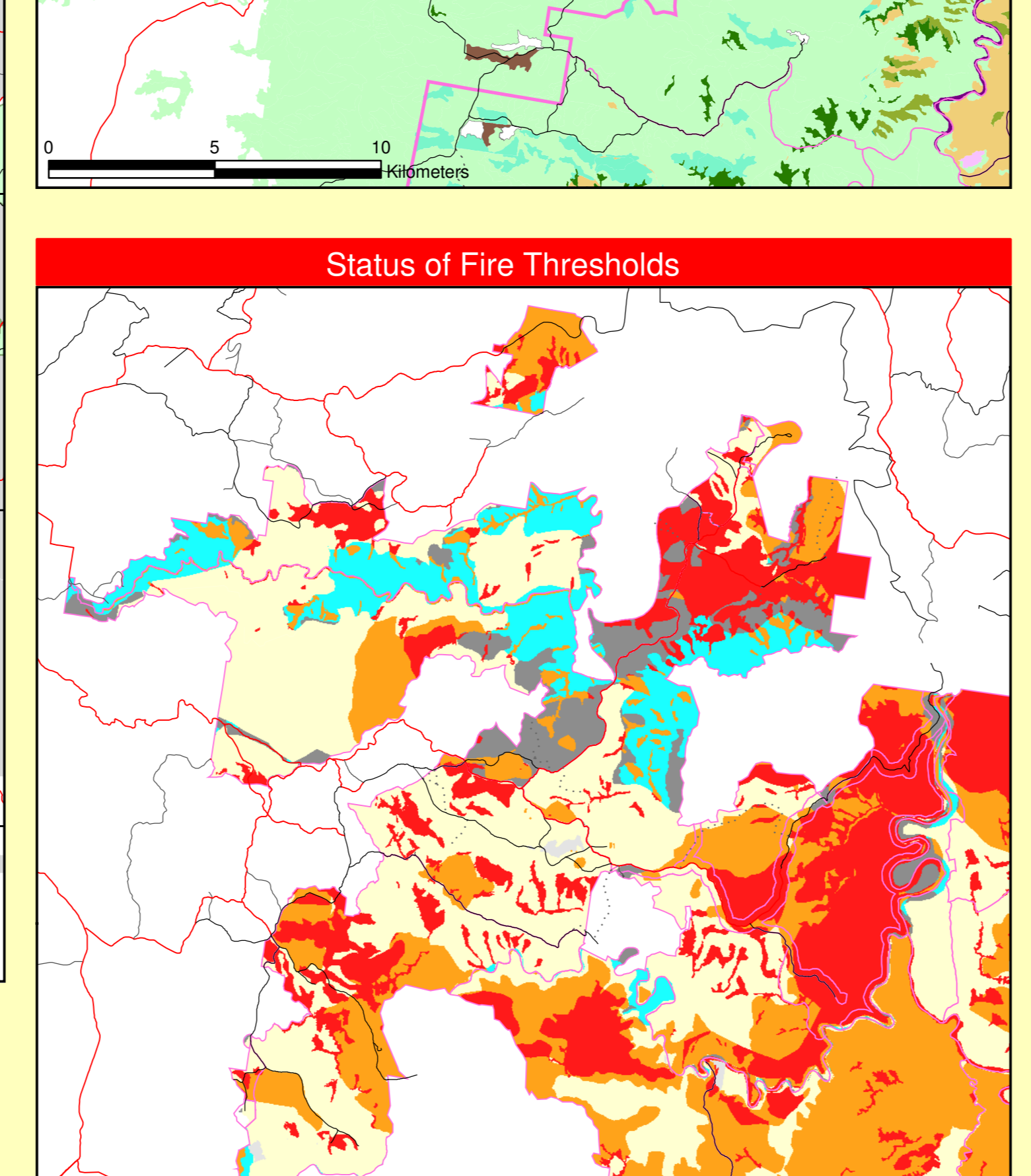
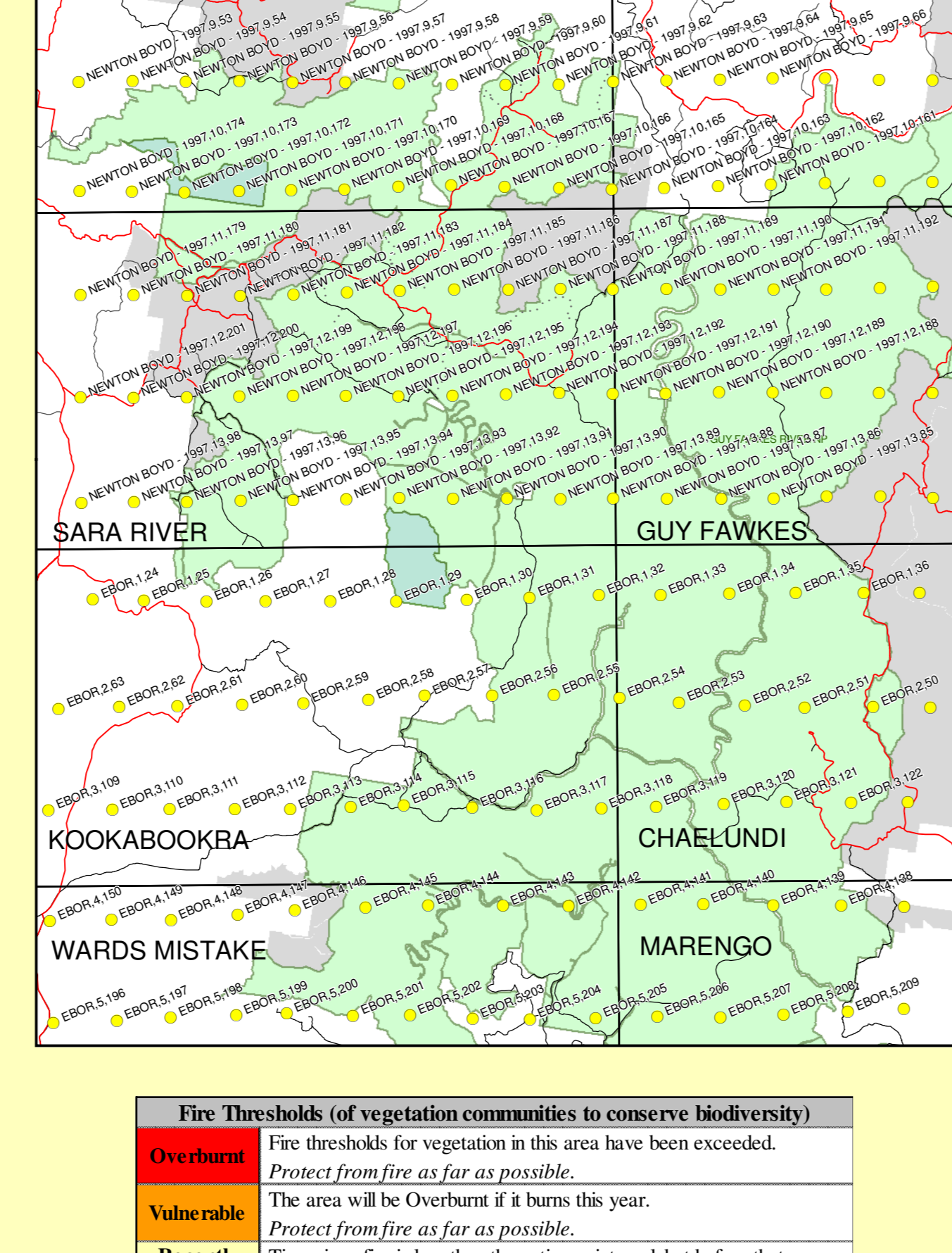
Agency	Position / Location	Phone	Mobile/Fax/Pager
National Parks & Wildlife North Coast	Regional Duty Officer - North Coast	0428 343 799	0418 301161 (pager)
	Dorrigo Plateau Area Manager	02 6657 2309	0427 190030
	Fire Management Officer - North Coast	02 6776 0014	0427 250222
	Regional Operations Coordinator - Nth Coast	02 6641 1508	0409 220613
	Dorrigo Plateau Area Office & AJH diverted (Business Centre) Done Rd., Dorrigo 2433	02 6657 2309	02 6657 2154 (fax)
	Incident Room - Dorrigo Office	02 6657 2309	
	Plateau Depot, Casuarina St., Dorrigo	02 6657 2961	02 6657 2945 (fax)
	Eber Depot	02 6775 9157	02 6775 9163 (fax)
	Dalmorton Hqs. Old Glen Innes-Grafton Rd. Tallanganda Field Depot, Paddys Land Rd.	02 6643 0984	02 6657 8558
	North Coast Regional Office - Grafton	02 6776 0000	02 6771 1804 (fax)
National Parks & Wildlife Northern Tablelands	Regional Duty Officer - Northern Tablelands	02 6732 5133	016 301161 (pager)
	Fire Management Officer - Northern Tablelands	02 6776 0014	0409 220613
	Regional Operations Coordinator - Northern Tablelands	02 6776 0000	02 6771 1804 (fax)
Forests NSW	Regional Operations Coordinator - Nth Coast	02 6641 1508	0409 220613
	Dorrigo Plateau Area Office & AJH diverted (Business Centre) Done Rd., Dorrigo 2433	02 6657 2309	02 6657 2154 (fax)
	Incident Room - Dorrigo Office	02 6657 2309	
Ambulance (NSW) Fire	24 hour emergency calls for assistance	000	
	24 hour calls for fire emergency assistance	000	
	24 hour calls for fire emergency assistance	000	
Local Government	Charmvale Valley	02 6641 7300	02 6641 7271 (fax)
	Guya	02 6779 1577	02 6779 1223 (fax)
	Glen Innes Severn	02 6732 5133	02 6732 3764 (fax)
Local Aboriginal Land Corporations	Armidale	02 6657 2606	
	Glen Innes	02 6732 1150	
	Grafton - Ngarrie	02 6642 6020	02 6779 1803
Police	24 hour emergency calls for Police assistance	000	
	Police Assistance Line (PAL)	131 444	
	Dorrigo Station	02 6657 2044	
State Emergency Service	24 hour emergency calls for assistance	132 5000	
	24 hour emergency calls for assistance	02 6657 2606	
	24 hour emergency calls for assistance	02 6640 1100	

Threatened Fauna Management
 NPWS FMM 4.12 & 5.2)
 Where possible, protect threatened flora populations or individuals from fire if the fire frequency threshold has been exceeded, or the species is an obligate responder (i.e. response category) or if the fire frequency threshold & fire response category is unknown.

Threatened Flora Management
 NPWS FMM 4.12)
 Where possible, protect threatened flora populations or individuals from fire if the fire frequency threshold has been exceeded, or the species is an obligate responder (i.e. response category) or if the fire frequency threshold & fire response category is unknown.

Threatened Property
 Where possible, property owners with assets at risk from a wildfire event will be kept informed regarding the progress of the fire. Also, they will be asked for an assessment of their current level of asset protection preparedness so that appropriate actions can be incorporated into the incident response.

General
 Aerial Ignition NPWS FMM 4.2.39 & 4.4. NSW Fire Agencies Australia SOPs & NPWS Guidelines for Effective Aerial Management)
 Aerial Water Bombing NPWS FMM 4.4 (NSW Fire Agencies Australia SOPs & NPWS Guidelines for Effective Aerial Management)
 Backburning NPWS FMM 4.5)
 Briefing Personnel NPWS FMM 4.13)
 Command & Control NPWS FMM 4.13)
 Containment Lines NPWS FMM 2.2 & 3.9)
 Detection of Wildfires
 Earthmoving Equipment NPWS FMM 4.2.20 & 4.3)
 Fire Advantage NPWS FMM 4.2.20 & 4.9)
 Fire Suppression Chemicals NPWS FMM 4.2.20 & 4.9)
 Rehabilitation NPWS FMM 3.1)
 Smoke Management NPWS FMM 3.4)
 Visitor Management NPWS FMM 3.6 & 4.13)



Strategy Information

Fire Season Information
 Wildfires on the Tablelands have been known to start in late winter, but large fire events are most likely to occur during September to December. This period may extend into January in other years. In very dry seasons, high intensity fires exhibiting extreme fire behaviour conditions.

Prescribed Burns
 NPWS Fire Management Manual 2.7)
 Prescribed burning is usually undertaken in late Autumn to Winter. Burning is possible in early Spring but not desirable on a regular basis for ecological or tourism management purposes.

Current FDR: Forecast FDR:
 Low - Med >= High
 All

Suppression Strategies
 All containment lines not required for other purposes should be closed at the location of the incident.
 Where practicable, containment lines should be stabilised and rehabilitated as part of the wildfire suppression operation.
 All personnel involved in containment line construction should be briefed on both natural and cultural heritage sites in the location.

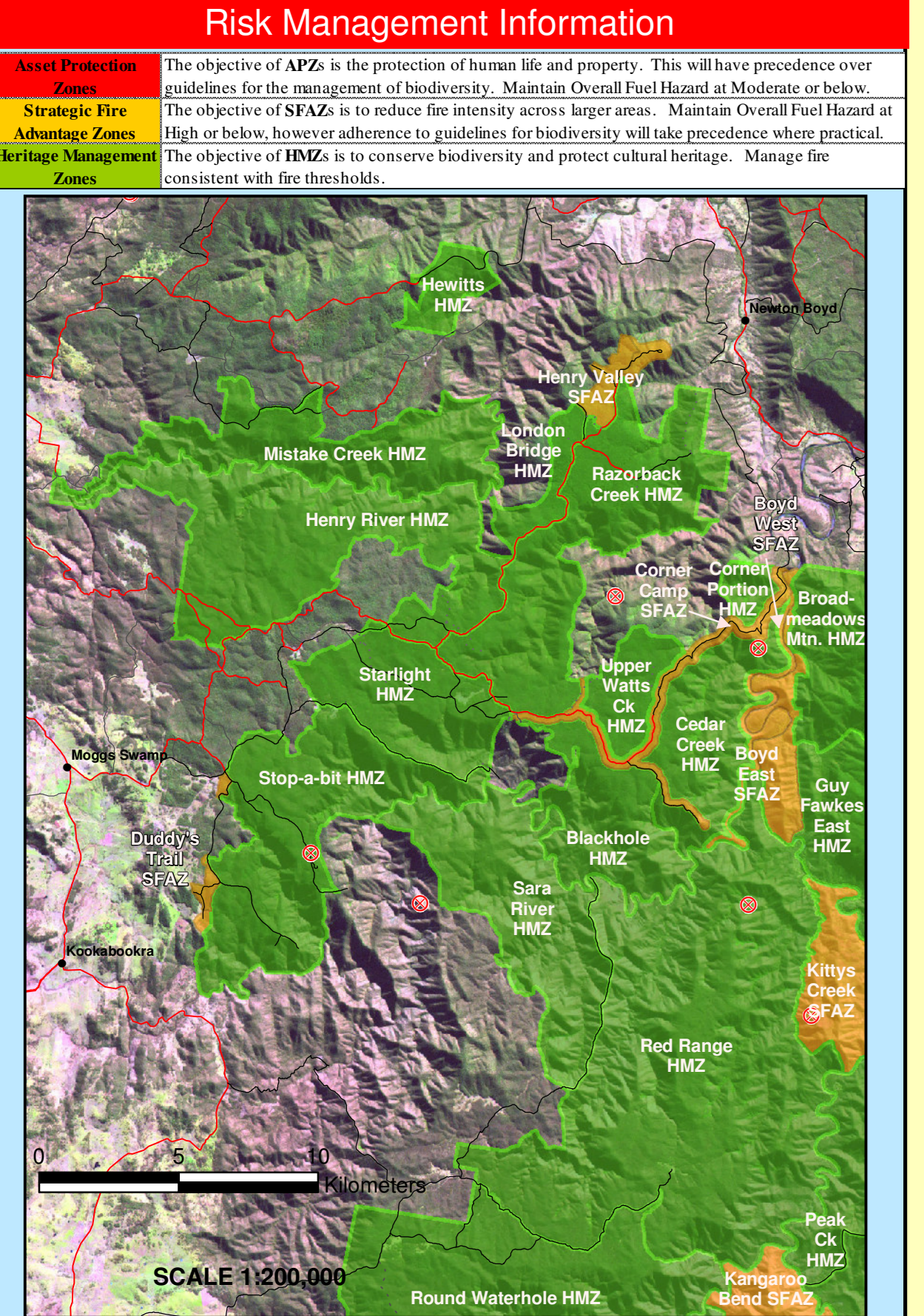
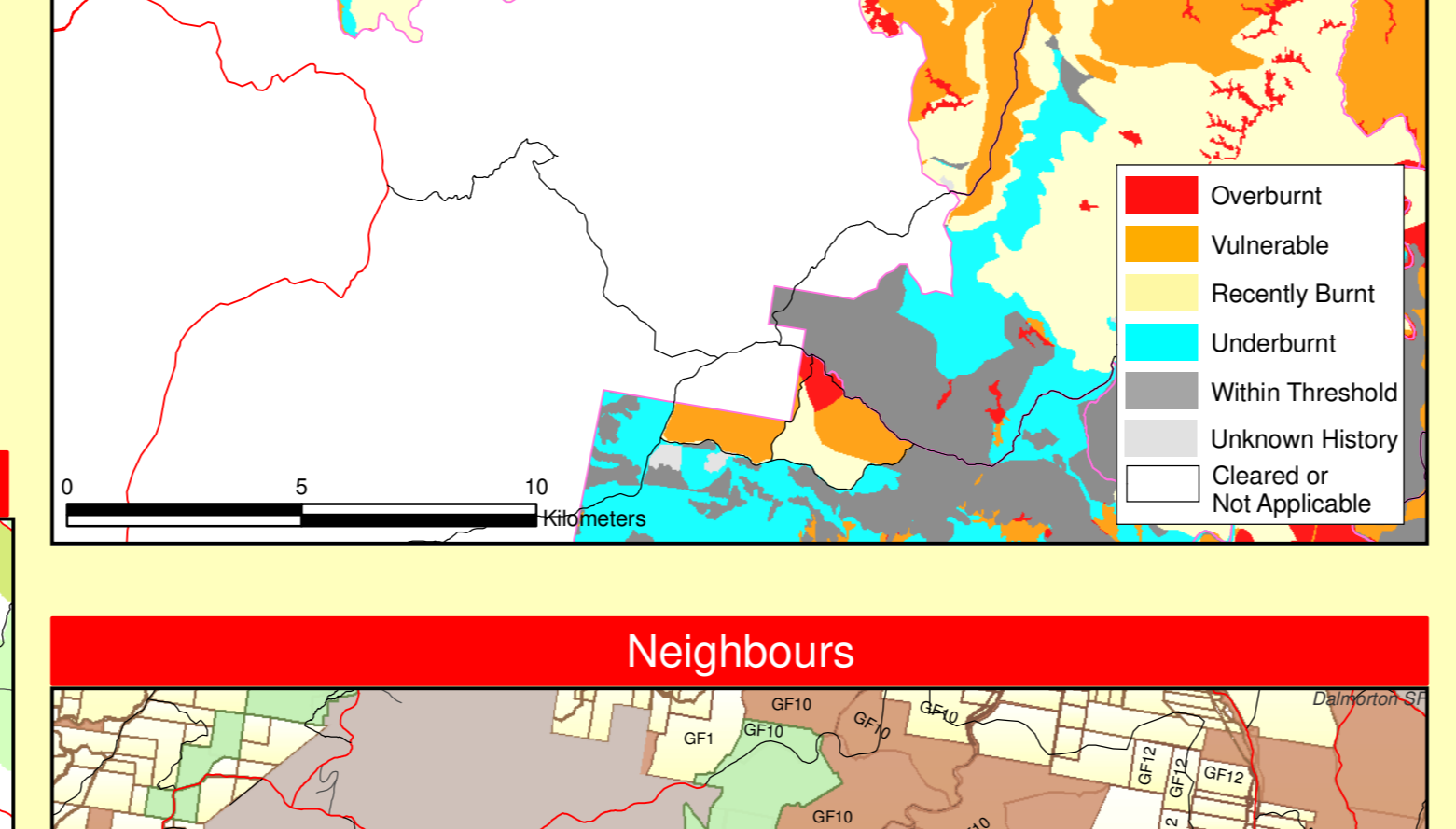
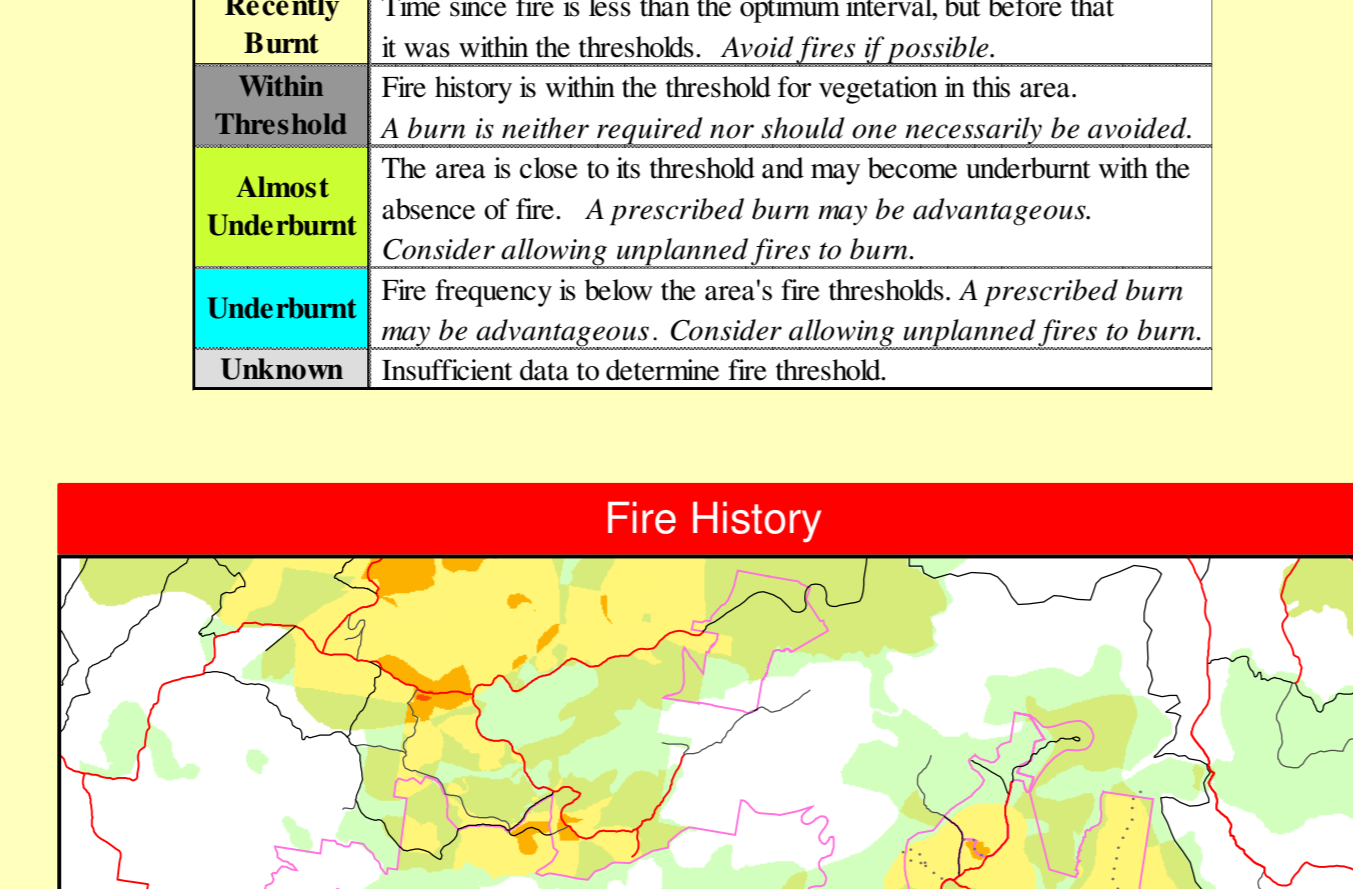
Detection of Wildfires
 Early detection of fire will be achieved via the use of observation towers, aerial patrols, automated lightning strike detection and neighbour contact.
 Aerial patrols for fire detection must be co-ordinated with adjacent NPWS Regions & other relevant agencies so as to maximise effectiveness and efficiency.
 All personnel involved in containment line construction should be briefed on both natural and cultural heritage sites in the location.

Earthmoving Equipment
 NPWS FMM 4.2.20 & 4.3)
 Earthmoving equipment may only be used with the prior consent of the senior NPWS officer, and then only if the probability of its success is high.
 Earthmoving equipment must be washed down prior to entering NPWS estate. As far as possible, restrict to use to previously used containment lines.
 Earthmoving equipment must be always guided and supervised by an experienced NPWS officer, and accompanied by a support vehicle. When engaged in direct or parallel attack, this vehicle must be a firefighting vehicle.
 Containment lines constructed by earthmoving equipment should be at least 50 m from depression lines in order to avoid erosion problems.
 Observe the Threatened Species and Cultural Heritage Operational Guidelines.
 Proposed containment lines to be constructed with earthmoving equipment should be surveyed to identify unknown cultural heritage sites.

Fire Advantage
 NPWS FMM 4.2.20 & 4.9)
 All fire advantages used during wildfire suppression operations must be mapped and where relevant added to the database.
 Writing and foaming agents (surfactants) are permitted for use in wildfire suppression.
 The use of fire retardant is only permitted with the prior consent of the senior NPWS officer, and should be avoided where reasonable alternatives are available.
 Exclude the use of surfactants and retardants within 50 m of rainforest, watercourses, dams and swamps.
 Areas where fire suppression chemicals are used must be mapped and the used product name recorded.
 Observe the Threatened Species Operational Guidelines.

Rehabilitation
 NPWS FMM 3.1)
 Where practicable, containment lines should be stabilised and rehabilitated as part of the wildfire suppression operation.
 The potential impacts of smoke and possible mitigation tactics must be considered when planning for wildfire suppression and prescribed burning operations.
 If smoke becomes a hazard on local roads or highways, the police and relevant media must be notified.

Visitor Management
 NPWS FMM 3.6 & 4.13)
 The reserve may be closed to the public during periods of extreme fire danger or during wildfire suppression operations.



Neighbours information is to be kept CONFIDENTIAL.

Northern Tablelands Region information is stored on the Regional Neighbours Database.
 North Coast Region information is stored at Dorrigo S:\LOCAL\NEIGHBOURS\GUYFDR\Current_neighbours_list
 All_Neighbours_Dorrigo_Coffs.xls

