



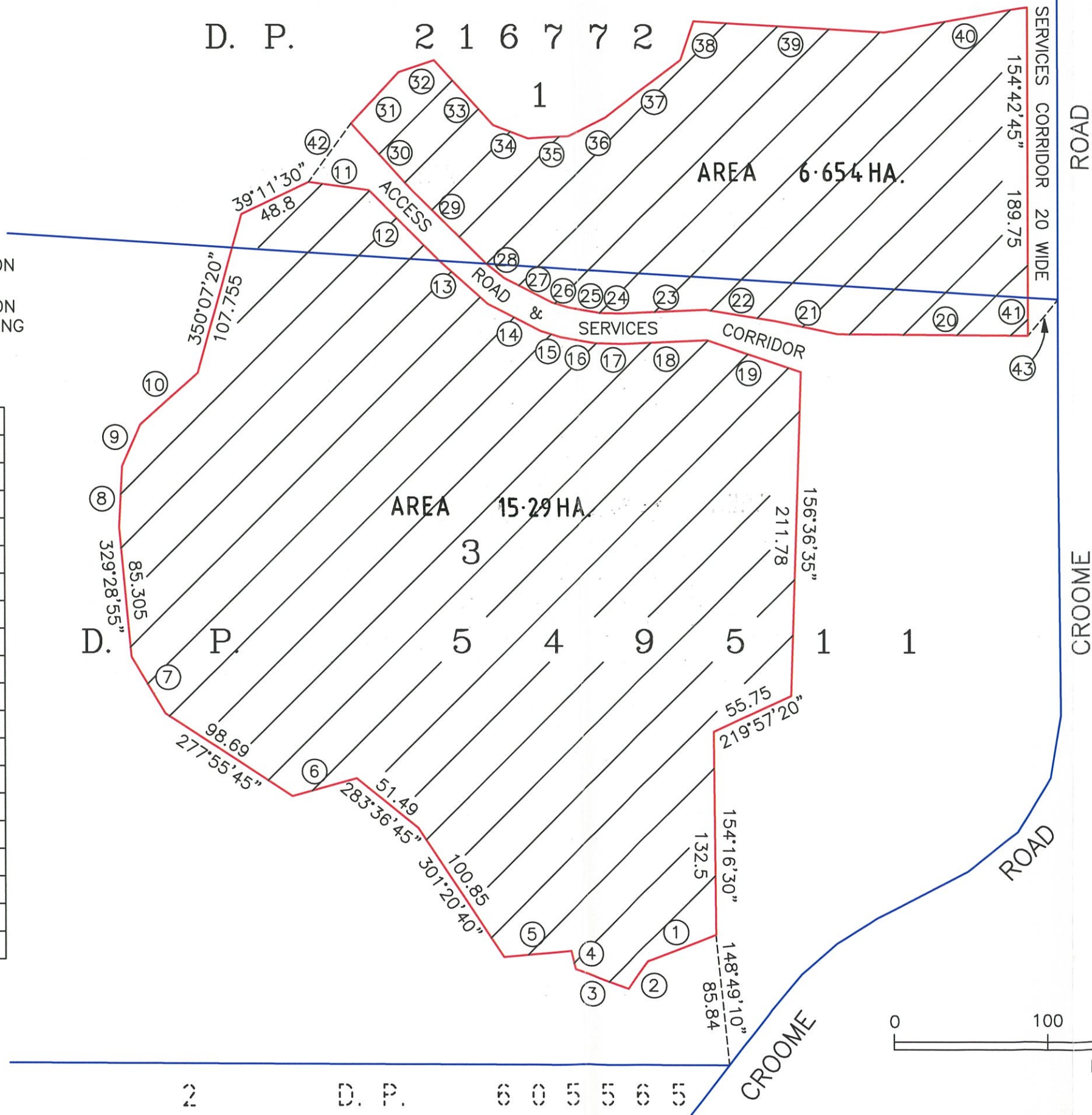
PART LOT 1 IN DP 216772
AND
PART LOT 3 IN DP 549511
PARISH OF JAMBEROO COUNTY OF CAMDEN
CONSERVATION AREA SHOWN BY HATCHING

11 D. P. 8 8 3 6 0 5

D. P. 2 1 6 7 7 2

— EXISTING CADASTRAL BOUNDARIES
— VOLUNTARY CONSERVATION AREA BOUNDARIES
VOLUNTARY CONSERVATION AREA SHOWN BY HATCHING

NR	BRG	DIST
1	223°13'20"	47.21
2	190°14'30"	22.105
3	264°38'10"	37.15
4	321°49'25"	12.445
5	239°41'05"	44.175
6	229°06'10"	43.47
7	303°52'10"	43.18
8	337°41'45"	39.695
9	358°36'10"	29.575
10	22°45'05"	50.48
11	72°30'05"	39.76
12	110°04'10"	64.82
13	106°30'05"	42.415
14	91°48'40"	38.835
15	81°38'15"	13.96
16	74°41'	22.845
17	66°34'35"	17.8
18	62°11'40"	54.89
19	83°28'50"	64.545



NR	BRG	DIST
20	245°07'25"	123.67
21	256°35'10"	41.965
22	254°05'35"	45.695
23	242°11'40"	54.89
24	245°58'25"	13.455
25	254°41'	21.63
26	261°38'10"	10.965
27	271°48'40"	35.035
28	283°20'20"	15.115
29	289°39'10"	67.795
30	292°31'10"	59.165
31	17°42'50"	45.58
32	45°55'30"	24.27
33	112°29'25"	57.18
34	85°41'50"	24.205
35	61°07'10"	26.57
36	38°38'35"	27.1
37	27°16'50"	61.55
38	353°31'15"	26.685
39	68°06'20"	124.74
40	54°30'10"	94.17
41	154°42'45"	24.85
42	10°50'30"	47.385
43	15°00'40"	30.92



[Handwritten signatures]

DIAGRAM A