

Conservation Action Plan

Peach myrtle (*Uromyrtus australis*)

This plan has been prepared in accordance with the requirements of s.78C of the National Parks and Wildlife Regulation 2019 (Reg.) in relation to an Asset of Intergenerational Significance (AIS) as declared under s.153G of the *National Parks and Wildlife Act 1974*.

Site details

AIS site	AIS-E0-026
Site location	An area of 1392 hectares in Mount Jerusalem National Park
NPWS contact	Project Officer Threatened Species, North Coast Branch

Environmental values

This table sets out the environmental values for which the land was listed as an AIS (Reg. 78C(3)(a)).

Identified value(s)	Value description
Important habitat for peach myrtle	Peach myrtle is a shrub or small tree growing up to 12 metres tall. The tree produces small white flowers that turn a deep pink as they mature before forming round black berries. The species grows in warm temperate rainforest on less fertile soils derived from rhyolite rock, often associated with Coachwood (<i>Ceratopetalum apetalum</i>).

Key risks to environmental values

This table sets out the key risks to the environmental values of the land (Reg. 78C(3)(b)).

Key risk(s)	Description
Inappropriate fire regimes	Inappropriate fire frequency and intensity that depletes soil stored seedbanks may lead to a decline or extinction of peach myrtle population at the site. This risk is exacerbated by the severely restricted distribution, low recruitment and very small population size of the species at the site.
Pathogens, diseases and microorganisms	Infection by myrtle rust resulting in mortality of individual plants can reduce the structure and function of suitable habitat and may affect the persistence of peach myrtle at the site.
Disturbance	Authorised infrastructure maintenance activities (e.g., road and trail maintenance and construction) that leads to degradation of habitat and damage to individuals by machinery, slashing and herbicide use.

Conservation activities

This table sets out the conservation activities required to:

1. Control, abate or mitigate the key risks and
2. maintain, restore and remediate the environmental values of the land (Reg. 78C(3)(c)).

Key risk(s)	Impacted site(s)	Conservation activities
Inappropriate fire regimes	All sites	<ul style="list-style-type: none"> • Develop guidance on the appropriate fire management for the habitat of the peach myrtle within 12 months of the adoption of this plan and update as required. This guidance must provide for: <ul style="list-style-type: none"> - maintenance of an appropriate fire regime by developing and implementing a site-specific burn plan for the declared areas - implementation of any required fire protection and response measures in the declared areas - integration of site-specific requirements into NPWS and NSW Government bushfire planning, risk management and operational response arrangements. • Implement fire management consistent with the guidance.
Pathogens, diseases and microorganisms	All sites	<ul style="list-style-type: none"> • Implement hygiene protocols as outlined in the DPIE Hygiene Guidelines (as published in April 2020) or as varied by any written advice from the Secretary for the purposes of this declared area. • Develop a hygiene management plan, including emergency response procedures in the event of an outbreak or evidence of serious impact of myrtle rust or other pathogenic diseases within 12 months of the adoption of this plan and update as required. • Implement the hygiene management plan.
Disturbance	All sites	<ul style="list-style-type: none"> • Undertake periodic reviews to identify whether infrastructure maintenance is having an adverse impact on peach myrtle. If adverse impacts are observed implement actions to mitigate the impacts. This may include: <ul style="list-style-type: none"> - upgrade/realignment of trails to avoid known plants/habitat - installation of signage or more discrete marking systems to delineate exclusion areas to prevent slashing or herbicide near sites. • Implement guidance for staff, utility managers, council and contractors as required, about appropriate maintenance practices that minimise impacts to the peach myrtle population and habitat.
All risks	All sites	<ul style="list-style-type: none"> • Establish/maintain ex-situ seedbank from a genetically representative sample of the population. • If required, augment the existing population and/or establish a new population with ex-situ material. • If required, undertake habitat restoration or improvement through supplemental planting or other practical methods.

Other land management activities

Within the declared land there are existing assets and infrastructure of NPWS and other external service providers, including public utilities.

Maintenance operations (including inspection, emergency works and routine and standard maintenance) that are exempt development in accordance with the Environmental Planning and Assessment Act 1979, and which are performed on and around existing assets and infrastructure, are authorised under this conservation action plan (CAP) provided such operations are undertaken in a manner that aims to minimise the risk to the declared environmental values of the land and with any other required consents or approvals.

All maintenance operations on the declared land are to be undertaken in accordance with this CAP.

Measuring and reporting

This table sets out the requirements for measuring and reporting on health and condition (Reg. 78C(3)(d)).

Attribute	Metric	Method
Health and condition of the peach myrtle population	Population count	Design and implement annually, monitoring to generate a count of the number of individuals in the population.

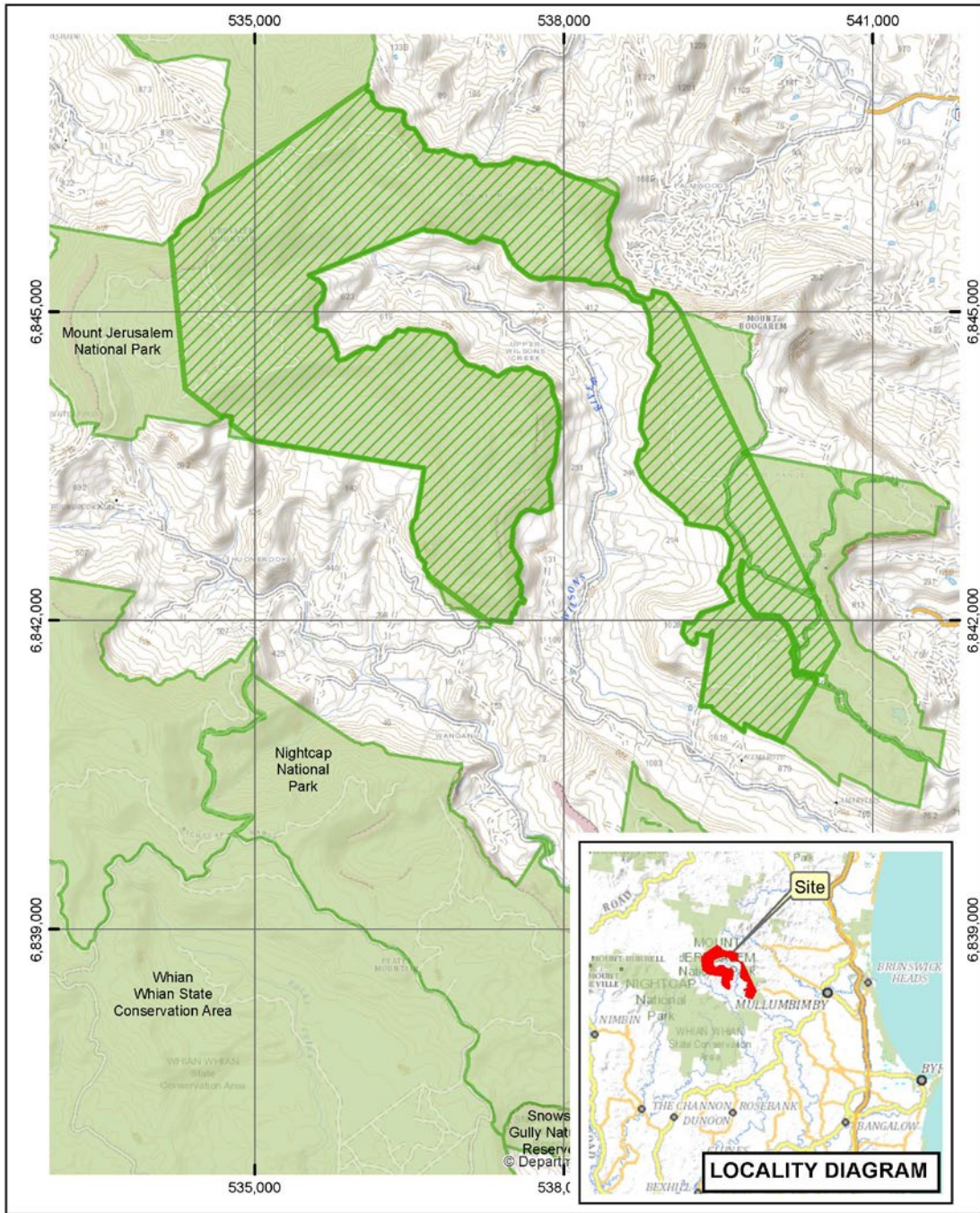
A report on the health and condition of the value for which this AIS was declared will be prepared and published on the Department of Planning and Environment website: www.environment.nsw.gov.au. The report will summarise the baseline and current health and condition of the values of the declared land and its overall trajectory.

Evaluation of conservation action plans



This CAP will be amended or replaced as new information becomes available that helps improve our management of the identified asset (Reg. 78H).

The Secretary must appoint a scientist, or a panel of scientists, to conduct a review, as soon as possible after the period of five years from the first approval of a CAP, to examine whether CAPs have been effectively implemented (Reg. 78J(1)).

Peach myrtle (*Uromyrtus australis*)
Conservation Action Plan




Legend



-  Declared Land
-  NPWS Estate

AIS-E0-026
Asset of Intergenerational Significance
Peach myrtle (*Uromyrtus australis*)
Mount Jerusalem National Park

Copyright of Department of Planning Industry and Environment.
This map is not guaranteed to be free from error or omission. The Department and its employees disclaim liability for any loss or damage on the information in the map and any consequences of such acts or omissions.

N 0 0.4 0.8 1.2 1.6 km



Peach myrtle (*Uromyrtus australis*)
Conservation Action Plan

Date prepared	August 2022
Date approved	17 December 2022
Approved by	Atticus Fleming, Acting Co-ordinator General, Environment and Heritage
Due for review	August 2027

Environment and Heritage, Department of Planning and Environment,
Locked Bag 5022, Parramatta NSW 2124
Phone: 1300 361 967; email: info@environment.nsw.gov.au; www.environment.nsw.gov.au
ISBN 978-1-922975-31-7; EHG 2023/0037; January 2023.