

Conservation Action Plan

Brush-tailed rock-wallaby (*Petrogale penicillata*)

This plan has been prepared in accordance with the requirements of s.78C of the National Parks and Wildlife Regulation 2019 (Reg.) in relation to an Asset of Intergenerational Significance (AIS) as declared under s.153G of the *National Parks and Wildlife Act 1974*.

Site details

AIS site	AIS-E0-152
Site location	An area of 3986 hectares in Curracabundi National Park An area of 320 hectares in Mernot Nature Reserve
NPWS contact	Threatened Species Project Officer, Hunter Central Coast Branch

Environmental values

This table sets out the environmental values for which the land was listed as an AIS (Reg. 78C(3)(a)).

Identified value(s)	Value description
Important habitat for Brush-tailed rock-wallaby	<p>The brush-tailed rock-wallaby is an endangered species with the majority of its population on national park estate. They have a long and bushy, dark brown tail that is bushier towards the tip and thick brown fur which becomes greyer on the shoulders. Their belly and chest fur are lighter in colour with some having a white blaze on their chest. They also have a distinctive black stripe from the front to the back of their head, and a white cheek stripe. Their compact and muscular build allows them to move swiftly over the rough, rocky terrain that they inhabit. Their long tail balances their movements as well as their padded and rough textured feet providing great traction. They occupy cliffs, scree slopes, outcrops and rocky escarpments often comprising of fissures, caves and ledges and forage on pasture/grassland surrounding rocky outcrops and escarpments.</p> <p>The habitat at this site supports a significant representation of the meta-populations that occur across the Northern Evolutionary Significant Unit (NESU) for this species.</p>

Key risks to environmental values

This table sets out the key risks to the environmental values of the land (Reg. 78C(3)(b)).

Key risk(s)	Description
Inappropriate fire regimes	Inappropriate fire frequency and intensity that alters vegetation composition and structure, may lead to a reduction in suitable habitat and may affect the persistence of brush-tailed rock wallabies at the sites.
Feral predators	Predation of Brush-tailed rock-wallabies by foxes, wild dogs and potentially feral cats.
Weeds	Habitat degradation and competition through invasion, establishment, intensification and spread of weeds to the extent that availability of forage or refuge areas are reduced.
Feral herbivores and pigs	Competition and habitat degradation of brush-tailed rock-wallaby habitat by introduced herbivores, such as feral goats and deer, through grazing and trampling.

Conservation activities

This table sets out the conservation activities required to:

1. Control, abate or mitigate the key risks and
2. maintain, restore and remediate the environmental values of the land (Reg. 78C(3)(c)).

Brush-tailed rock-wallaby (*Petrogale penicillata*)
Conservation Action Plan

Key risk(s)	Impacted site(s)	Conservation activities
Inappropriate fire regimes	All sites	<ul style="list-style-type: none"> • Develop guidance on the appropriate fire management for the habitat of the brush-tailed rock-wallaby within 12 months of adoption of this plan and update as required. This guidance must provide for: <ul style="list-style-type: none"> - maintenance of an appropriate fire regime by developing and implementing site-specific burn plans for the declared areas - implementation of any required fire protection and response measures in the declared areas - integration of site-specific requirements into NPWS and NSW Government bushfire planning, risk management and operational response arrangements. • Implement fire management consistent with the guidance.
Feral predators	All sites	<ul style="list-style-type: none"> • To the extent practicable, reduce the density of foxes and wild dogs to levels that are not having an ecologically significant impact on the brush-tailed rock-wallaby, and maintain the density at or below that level by baiting, trapping and shooting. • To the extent practicable, undertake opportunistic feral cat control (shooting, trapping or other approved methods) to reduce the density of cats to a level that is not having an ecologically significant impact on the brush-tailed rock-wallaby and maintain the density at or below that level.
Weeds	All sites	<ul style="list-style-type: none"> • Remove weed species to the extent required to ensure weeds do not have a negative impact on the brush-tailed rock-wallaby, by targeted application of physical and chemical weed control.
Feral herbivores and pigs	All sites	<ul style="list-style-type: none"> • To the extent practicable, reduce feral goat, deer and pig densities to levels that are not having an ecologically significant impact on the brush-tailed rock-wallaby, and maintain densities at or below those levels by trapping, baiting and shooting.

Other land management activities

Within the declared land there are existing assets and infrastructure of NPWS and other external service providers, including public utilities.

Maintenance operations (including inspection, emergency works and routine and standard maintenance) that are exempt development in accordance with the *Environmental Planning and Assessment Act 1979*, and which are performed on and around existing assets and infrastructure, are authorised under this conservation action plan (CAP) provided such operations are taken in a manner that aims to minimise the risk to the declared environmental values of the land and with any other required consents or approvals.

All maintenance operations on the declared land are to be undertaken in accordance with this CAP.

Measuring and reporting

This table sets out the requirements for measuring and reporting on health and condition (Reg. 78C(3)(d)).

Attribute	Metric	Method
Health and condition of the brush-tailed rock-wallaby population	Occupancy	Design, and implement annually, monitoring to detect changes in occupancy at monitoring sites.

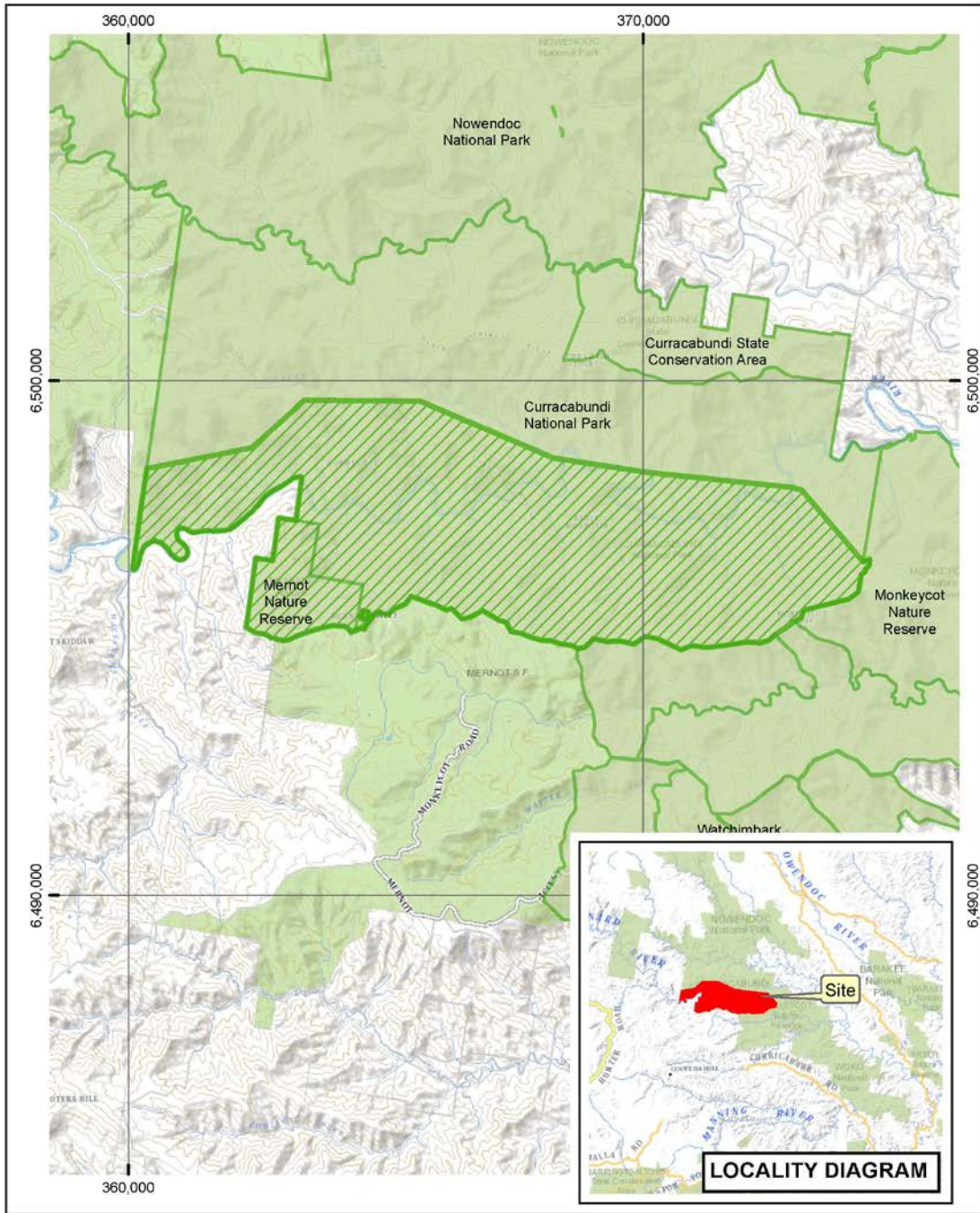
A report on the health and condition of the value for which this AIS was declared will be prepared and published on the Department of Planning and Environment website: www.environment.nsw.gov.au. The report will summarise the baseline and current health and condition of the values of the declared land and its overall trajectory.

Evaluation of conservation action plans



This CAP will be amended or replaced as new information becomes available that helps improve our management of the identified asset (Reg. 78H).

The Secretary must appoint a scientist, or a panel of scientists, to conduct a review, as soon as possible after the period of five years from the first approval of a CAP, to examine whether CAPs have been effectively implemented (Reg. 78J(1)).

Brush-tailed rock-wallaby (*Petrogale penicillata*)
Conservation Action Plan





Legend

-  Declared Land
-  NPWS Estate

AIS-E0-152
Asset of Intergenerational Significance
Brush-tailed rock-wallaby
(Petrogale penicillata)
Curracabundi National Park and
Mernot Nature Reserve

Copyright of Department of Planning Industry and Environment.
 This map is not guaranteed to be free from error or omission. The Department and its employees disclaim liability for any loss or damage arising from the use of this map and any consequences of such acts or omissions.

N
 0 1 2 3
 km

Brush-tailed rock-wallaby (*Petrogale penicillata*)
Conservation Action Plan

Date prepared	July 2022
Date approved	25 July 2022
Approved by	Atticus Fleming, Acting Coordinator General, Environment and Heritage
Due for review	July 2027

Environment and Heritage, Department of Planning and Environment,
Locked Bag 5022, Parramatta NSW 2124
Phone: 1300 361 967; email: info@environment.nsw.gov.au; www.environment.nsw.gov.au
ISBN 978-1-76058-573-0; EHG 2022/0370; August 2022.