

Conservation Action Plan

Bolivia homoranthus (*Homoranthus croftianus*)

This plan has been prepared in accordance with the requirements of s.78C of the National Parks and Wildlife Regulation 2019 (Reg.) in relation to an Asset of Intergenerational Significance (AIS) as declared under s.153G of the *National Parks and Wildlife Act 1974*.

Site details

AIS site	AIS-E0-012
Site location	An area of 838 hectares in Bolivia Hill Nature Reserve
NPWS contact	Project Officer Threatened Species, Northern Inland Branch

Environmental values

This table sets out the environmental values for which the land was listed as an AIS (Reg. 78C(3)(a)).

Identified value(s)	Value description
Important habitat for Bolivia homoranthus	Bolivia homoranthus is an endangered shrub that grows to two metres tall with green to cream flowers. The species is restricted to Bolivia Hill Ranges, north of Deepwater on the New England Tablelands of New South Wales. It is associated with isolated granitic outcrops at about 1000 metres altitude, growing in crevices of bare rocky slopes and in shallow acidic soil above and below sheet rock.

Key risks to environmental values

This table sets out the key risks to the environmental values of the land (Reg. 78C(3)(b)).

Key risk(s)	Description
Inappropriate fire regimes	Inappropriate fire frequency and intensity that kills adult plants and limits recovery or regeneration may lead to a decline or extinction of Bolivia homoranthus at the site. This risk is exacerbated by the restricted distribution and small population size of Bolivia homoranthus.
Feral herbivores	Damage to individual plants, and degradation of Bolivia homoranthus habitat, by introduced herbivores, such as goats and rabbits, through grazing and trampling.

Conservation activities

This table sets out the conservation activities required to:

1. Control, abate or mitigate the key risks and
2. maintain, restore and remediate the environmental values of the land (Reg. 78C(3)(c)).

Key risk(s)	Impacted site(s)	Conservation activities
Inappropriate fire regimes	All sites	<ul style="list-style-type: none"> • Develop guidance on the appropriate fire management for the habitat of the Bolivia homoranthus within 12 months of adoption of this plan and update as required. This guidance must provide for: <ul style="list-style-type: none"> - maintenance of an appropriate fire regime by developing and implementing a site-specific burn plan for the declared areas - implementation of any required fire protection and response measures in the declared areas - integration of site-specific requirements into NPWS and NSW Government bushfire planning, risk management and operational response arrangements. • Implement fire management consistent with the guidance.
Feral herbivores	All sites	<ul style="list-style-type: none"> • To the extent practicable, reduce feral goat and rabbit densities to levels that are not having an ecologically significant impact on the Bolivia homoranthus, and maintain densities at or below those levels, by trapping, baiting and shooting and other approved integrated control measures. • Install and maintain protective barriers around individual Bolivia homoranthus plants to prevent impacts from grazing and trampling by feral herbivores.

Other land management activities

Within the declared land there are existing assets and infrastructure of NPWS and other external service providers, including public utilities.

Maintenance operations (including inspection, emergency works and routine and standard maintenance) that are exempt development in accordance with the *Environmental Planning and Assessment Act 1979*, and which are performed on and around existing assets and infrastructure, are authorised under this conservation action plan (CAP) provided such operations are taken in a manner that aims to minimise the risk to the declared environmental values of the land and with any other required consents or approvals.

All maintenance operations on the declared land are to be undertaken in accordance with this CAP.

Measuring and reporting

This table sets out the requirements for measuring and reporting on health and condition (Reg. 78C(3)(d)).

Attribute	Metric	Method
Health and condition of the Bolivia homoranthus population	Population count	Design, and implement annually, monitoring to generate an estimate of the number of established stems in the population.

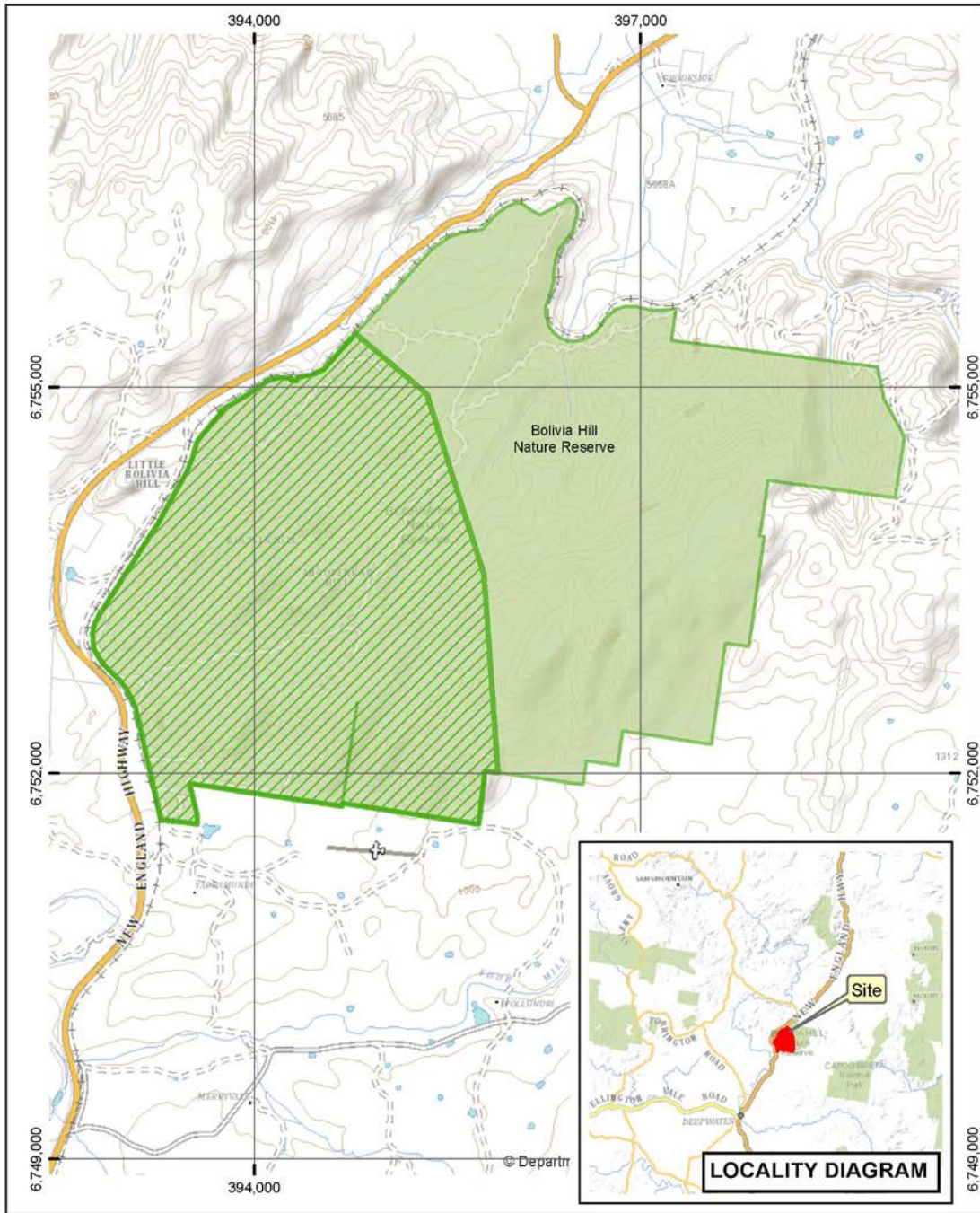
A report on the health and condition of the value for which this AIS was declared will be prepared and published on the Department of Planning and Environment website: www.environment.nsw.gov.au. The report will summarise the baseline and current health and condition of the values of the declared land and its overall trajectory.

Evaluation of conservation action plans


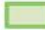
This CAP will be amended or replaced as new information becomes available that helps improve our management of the identified asset (Reg. 78H).

The Secretary must appoint a scientist, or a panel of scientists, to conduct a review, as soon as possible after the period of five years from the first approval of a CAP, to examine whether CAPs have been effectively implemented (Reg. 78J(1)).

Bolivia homoranthus (*Homoranthus croftianus*)
Conservation Action Plan





Legend

-  Declared Land
-  NPWS Estate

AIS-E0-012
Asset of Intergenerational Significance
Bolivia homoranthus
(*Homoranthus croftianus*)
Bolivia Hill Nature Reserve

Copyright of Department of Planning Industry and Environment.
 This map is not guaranteed to be free from error or omission. The Department and its employees disclaim liability for any use over the information in the map and any consequences of such acts or omissions.

N 0 0.4 0.8 1.2 km

Bolivia homoranthus (*Homoranthus croftianus*)
Conservation Action Plan

Date prepared	July 2022
Date approved	25 July 2022
Approved by	Atticus Fleming, Acting Coordinator General, Environment and Heritage
Due for review	July 2027

Environment and Heritage Group, Department of Planning and Environment,
Locked Bag 5022, Parramatta NSW 2124
Phone: 1300 361 967; email: info@environment.nsw.gov.au; www.environment.nsw.gov.au
ISBN 978-1-76058-566-2; EHG 2022/0363; August 2022.