

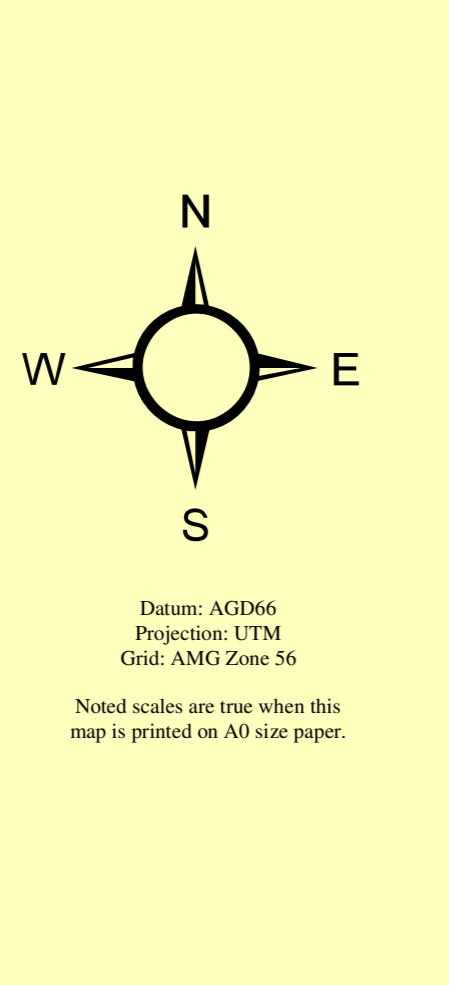
Northern Tablelands Region Butterleaf NP & SCA Fire Management Strategy (Type 2) 2005 Sheet 1 of 1

This strategy should be used in conjunction with aerial photography and field reconnaissance during incidents and the development of incident action plans.

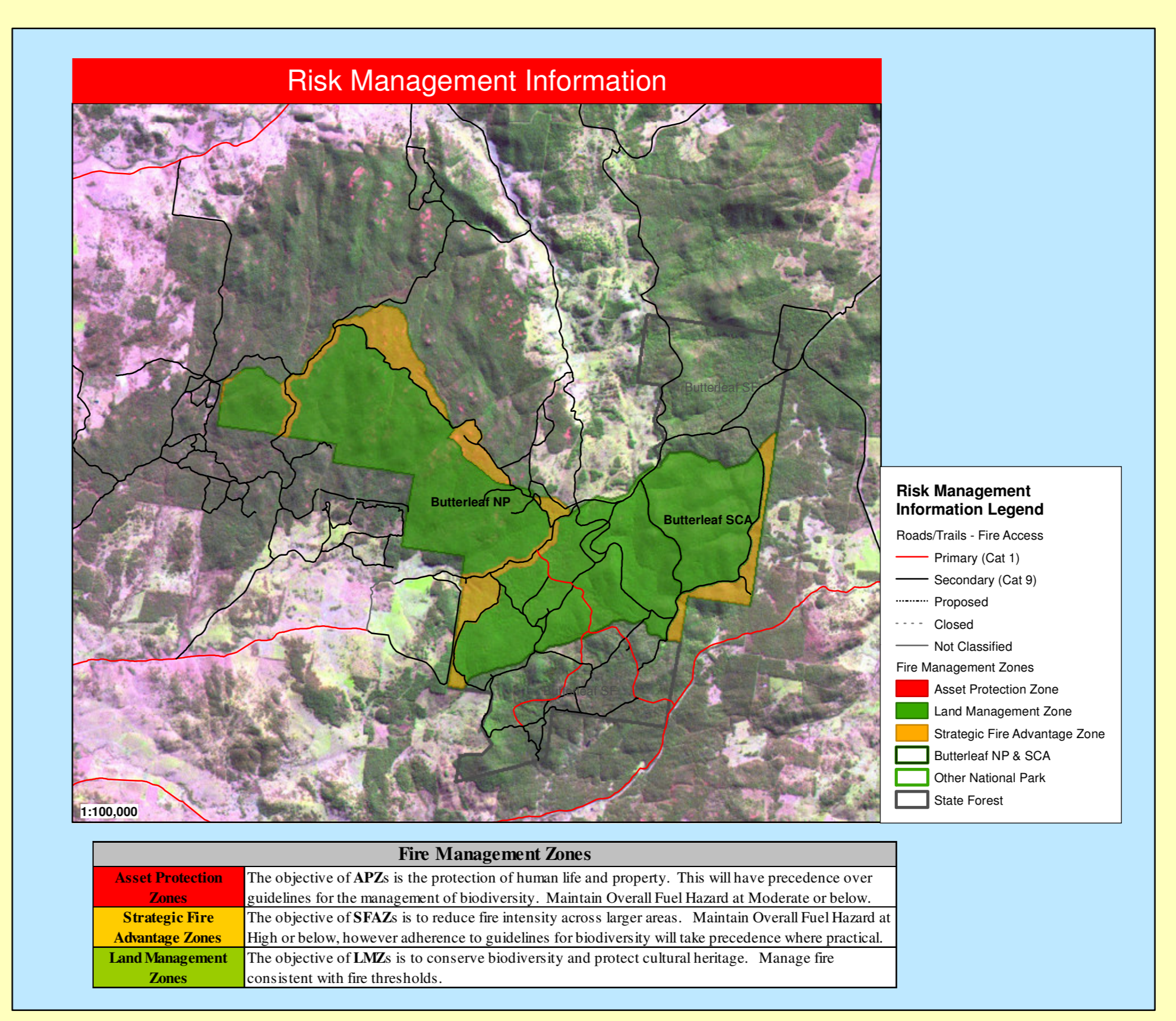
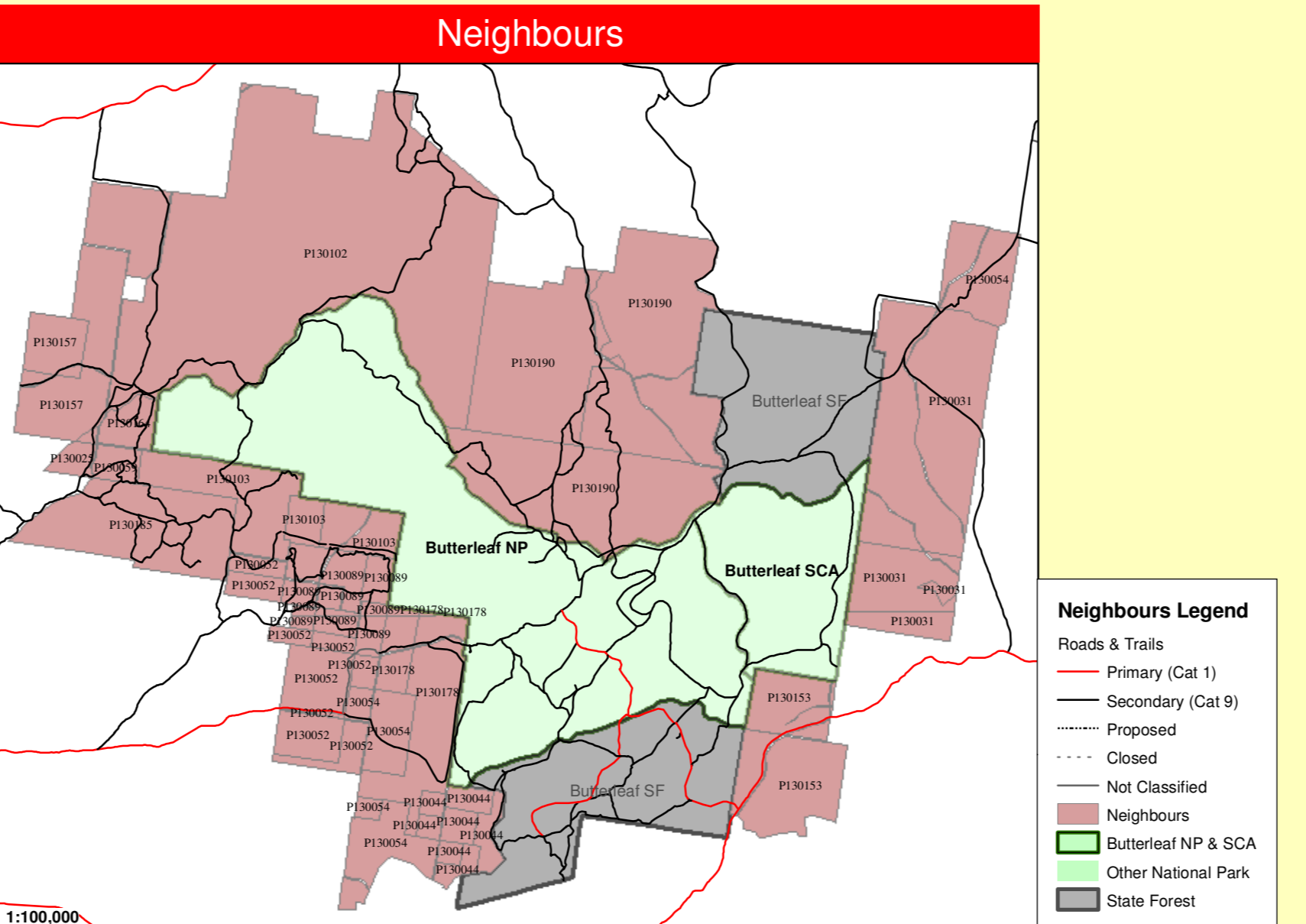
These data are not guaranteed to be free from error or omission. The NSW National Parks and Wildlife Service is not responsible for any loss or damage to property or any other consequences arising from the use of this information. This document is copyright. Apart from any fair dealing for the purpose of study, research, criticism or review, as permitted under the copyright Act, no part may be reproduced by any process without written permission. The NSW National Parks and Wildlife Service is part of the Department of Environment and Conservation. Published by the Department of Environment and Conservation (NSW), November 2005. Contact: NSW National Parks and Wildlife Service, Northern Tablelands Region, PO Box 402 Armidale NSW 2350. ISBN: 1 74137 587 3 DEC Number: 2005/448 Last Updated: 18 Nov 2005

This strategy is a relevant Plan under Section 38 (4) and Section 44 (5) of Rural Fires Act 1997.

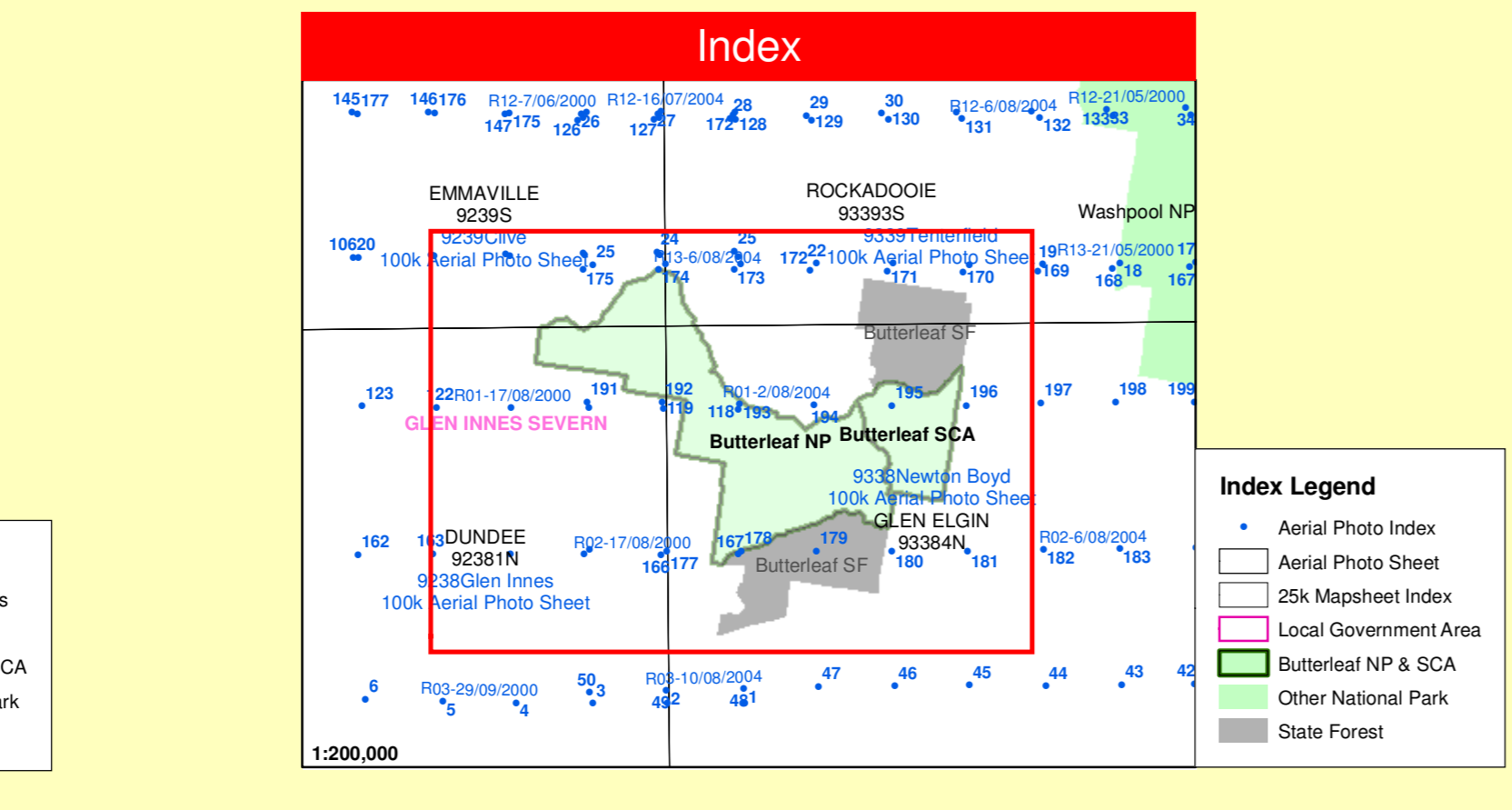
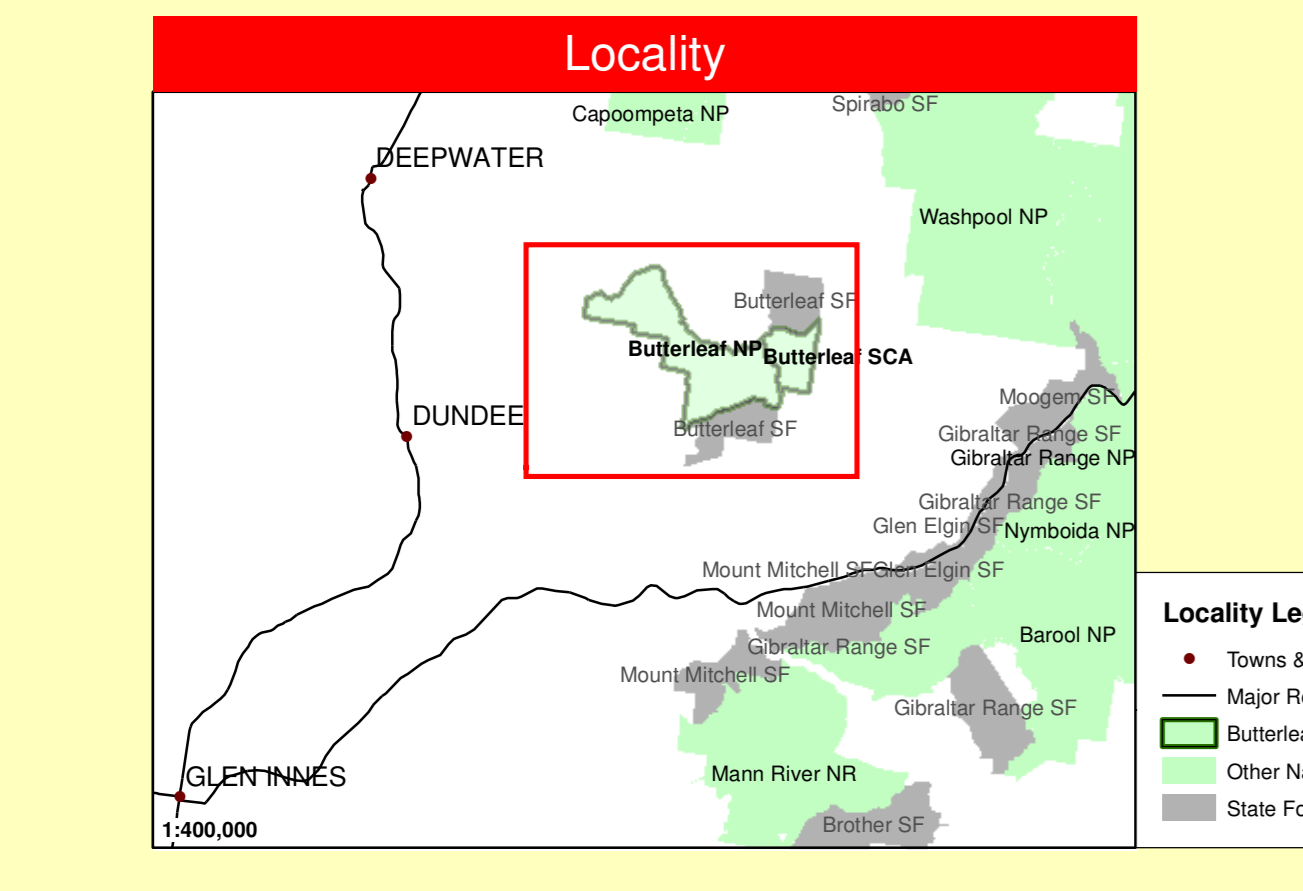
Approved Date: 29 Dec 2005



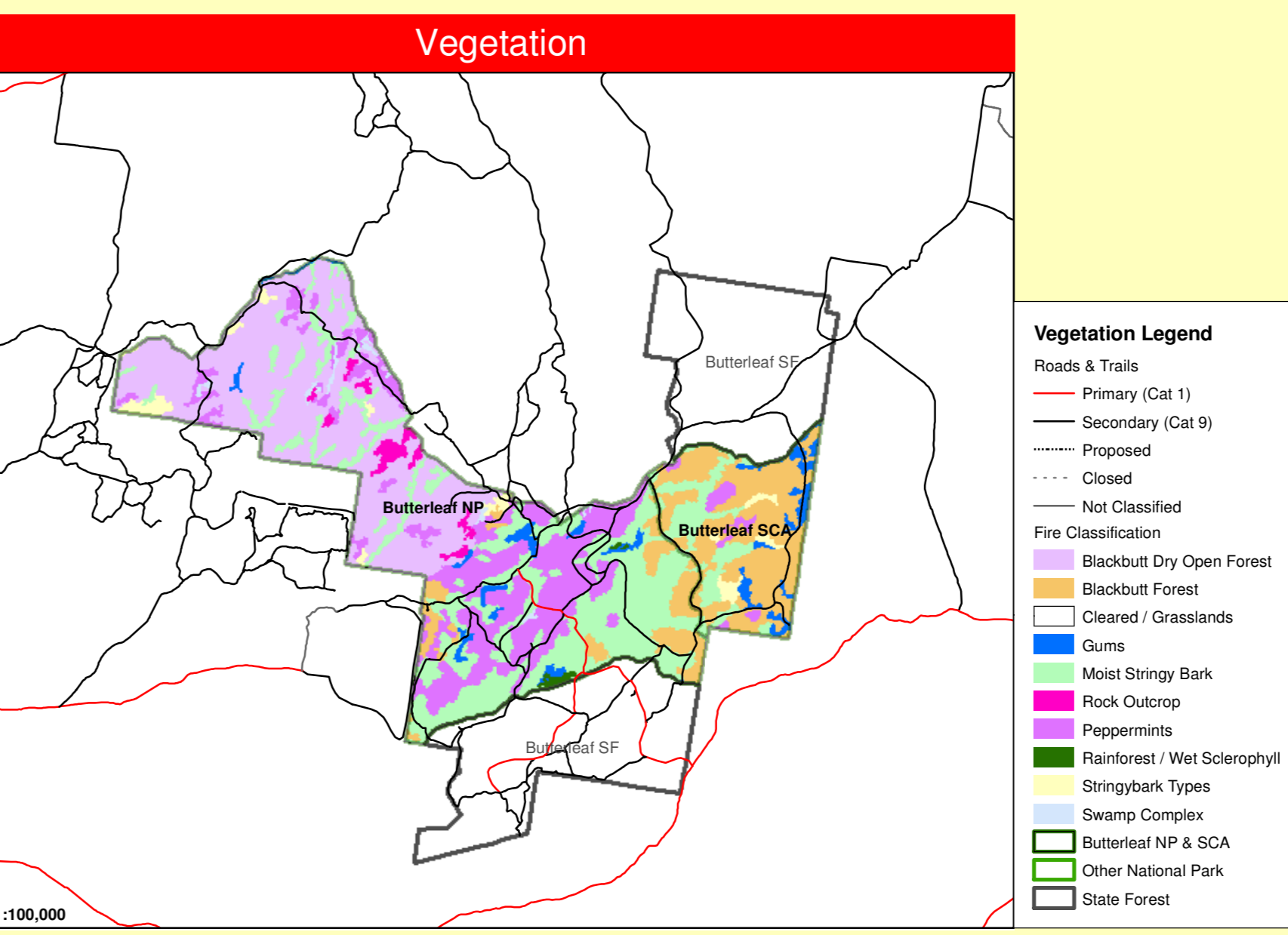
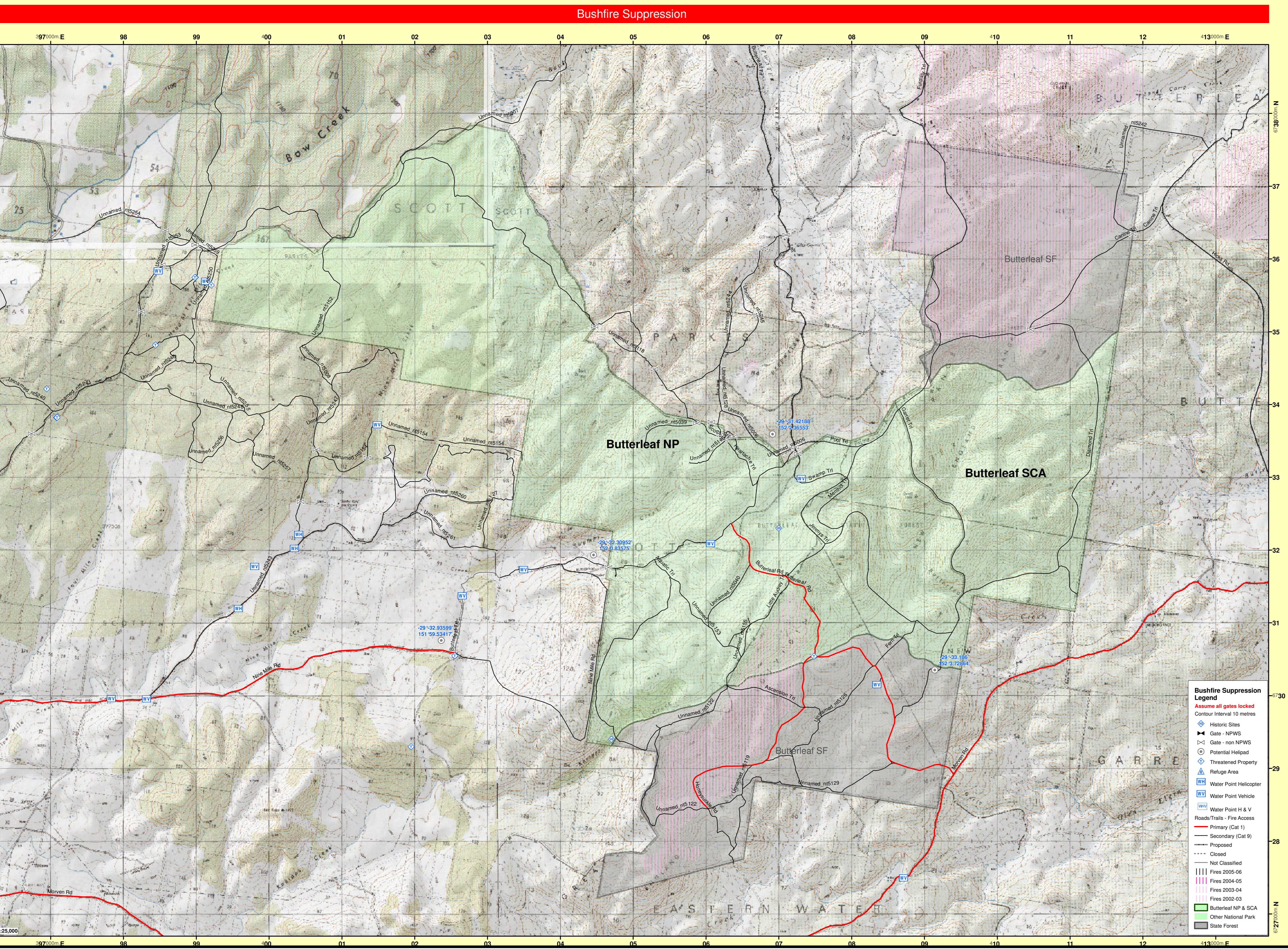
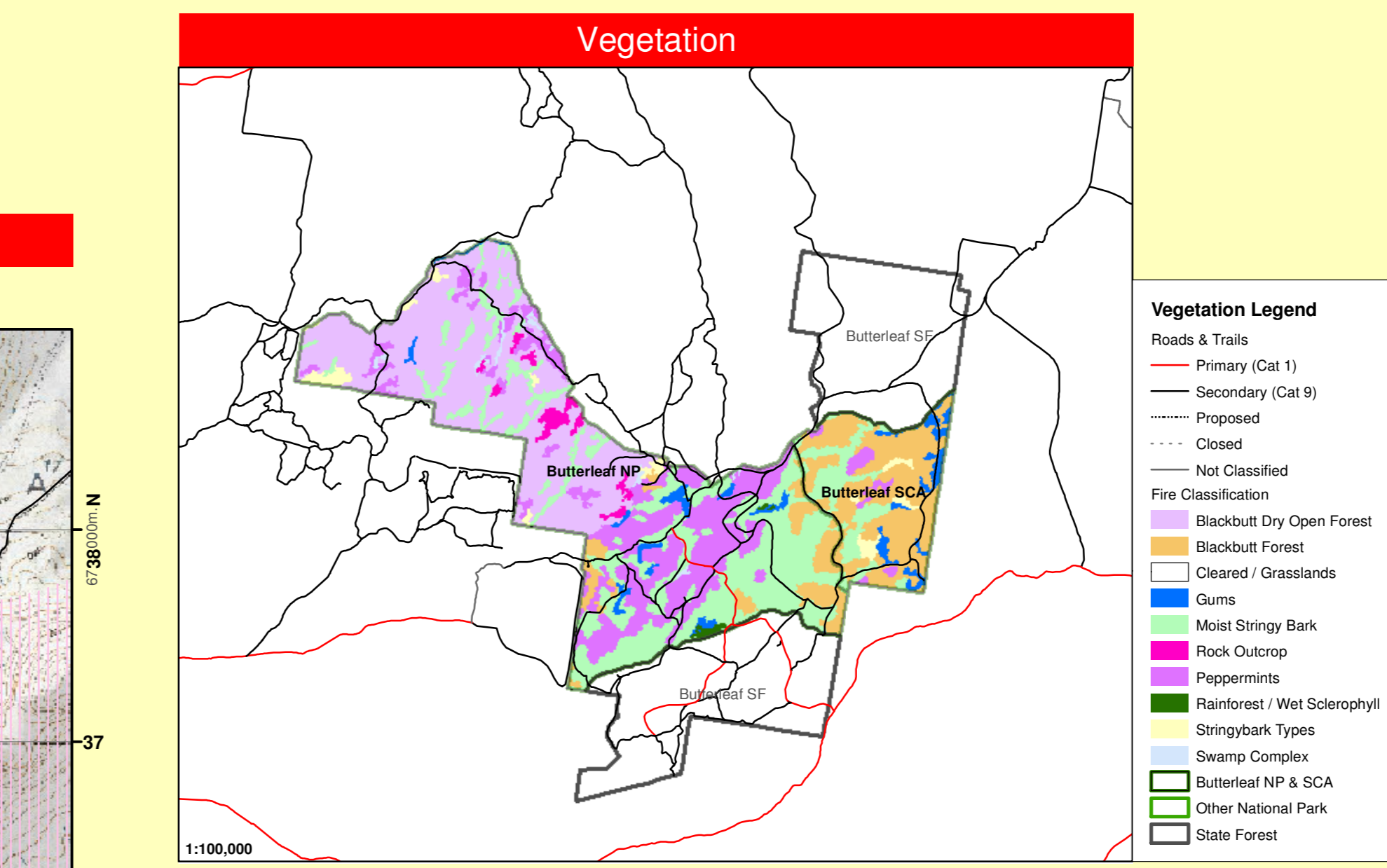
Strategy Information	
Fire Season Information	
Wildfires	<ul style="list-style-type: none"> Have been known to start as early as late August, but usually the potential for a large fire event is greatest between October and December. This period may extend into January in more severe years. During this period in dry seasons fires may exhibit high intensity behaviour under windy conditions.
Prescribed Burning (NPWS Fire Management Manual 4.7)	
	<ul style="list-style-type: none"> General season is Autumn to late Winter. Burning is possible in early Spring but not desirable on a regular basis from an ecological or tourism point of view.
Suppression Strategies	
Current FDR	Forecast FDR
Low - Mod	Low - Mod
Low - Mod	=> High
High	All
All	All



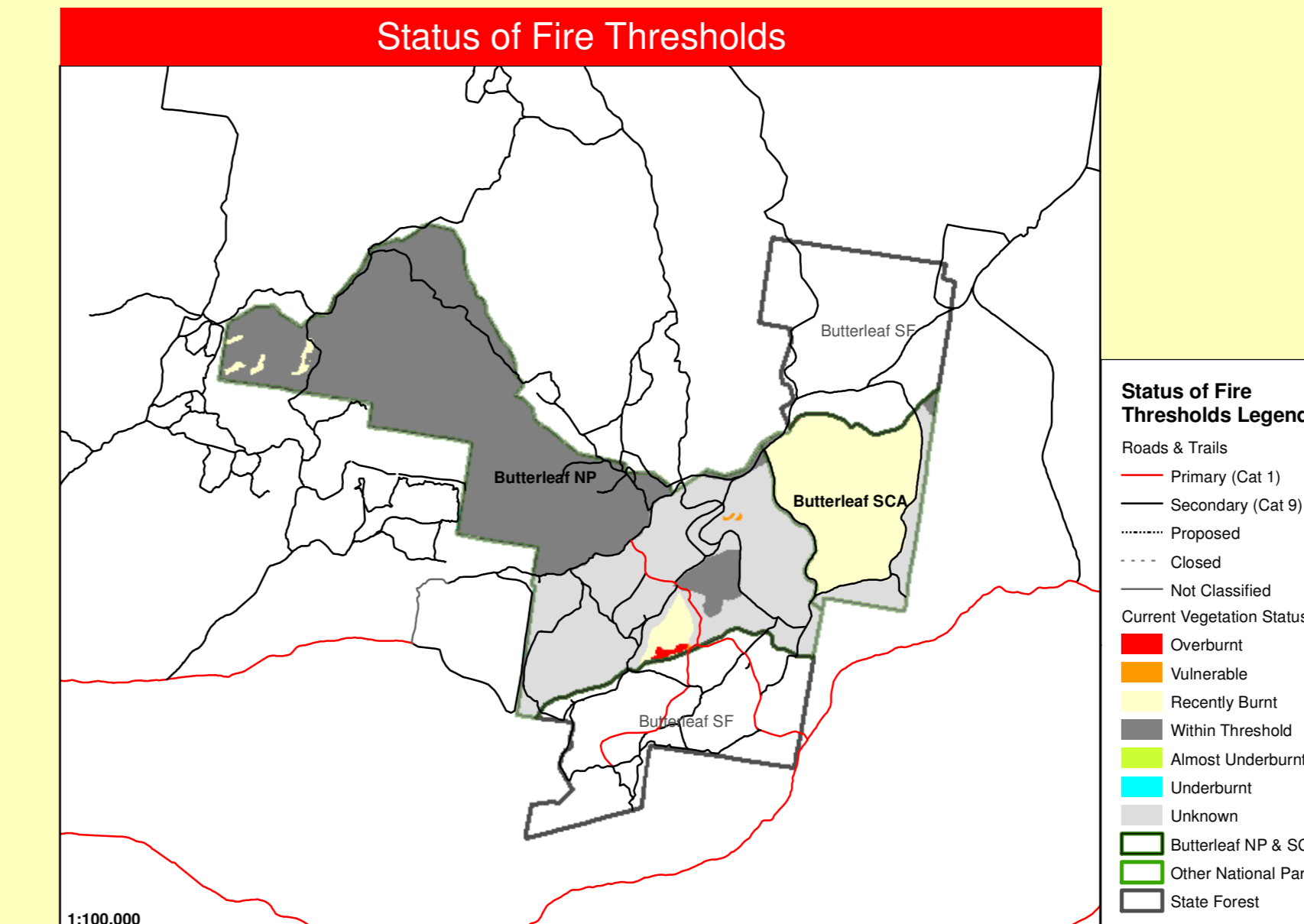
Operational Guidelines	
Refer to Strategy for Fire Management 2003 and Fire Management Manual 2004. Brief all personnel involved in suppression operations on the following issues:	
Resource	Guidelines
Aboriginal Cultural Heritage Site Management (NPWS FMM 4.11)	Aboriginal sites are not indicated on this strategy. For information on Aboriginal sites contact the Aboriginal Conservation Heritage Officer or Local Aboriginal Land Council.
Historic Heritage Management (NPWS FMM 4.10)	No known sites in Reserve. If new sites located consult with a senior NPWS officer.
Threatened Fauna Management (NPWS FMM 4.12 & 5.2)	No known sites in Reserve. If new sites are located consult with a senior NPWS officer.
Threatened Flora Management (NPWS FMM 4.12)	<ul style="list-style-type: none"> Brief all personnel involved in fire suppression operations on site location and the required management strategies appropriate to the site type. Where practicable protect populations or individuals from fire if the fire threshold has been exceeded or if the species is an obligate seeder or if the fire threshold and/or the fire response category is unknown.
Threatened Property	<ul style="list-style-type: none"> Where possible property owners with assets at risk from a wildfire event should be kept informed regarding the progress of the fire; and asked for an assessment of their current level of asset protection preparedness.
General	Guidelines
Aerial Water Bombing (NPWS FMM 4.4 / NSW Fire Agencies Aviation SOP 02 / NPWS Guidelines for Effective Aircraft Management)	<ul style="list-style-type: none"> The use of bombing aircraft should support containment operations by aggressively attacking hotspots and spot fires. The use of bombing aircraft without the support of ground based suppression crews should be limited to very specific circumstances. Where practicable foam should be used to increase the effectiveness of the water. Ground crews must be alerted to water bombing operations.
Aerial Ignition (NPWS FMM 4.2.20 & 4.4 / NSW Fire Agencies Aviation SOP 02 / NPWS Guidelines for Effective Aircraft Management)	<ul style="list-style-type: none"> Aerial ignition may be used during back-burning or fuel reduction operations where practicable, but only with the prior consent of a senior NPWS officer. Utilise incendiaries to rapidly progress back-burns down slope where required.
Backburning (NPWS FMM 4.8)	<ul style="list-style-type: none"> Temperature and humidity trends must be monitored carefully to determine the safest times to implement backburns. Generally, when the humidity begins to rise in the late afternoon or early evening. With a lower FDR backburning may be safely undertaken during the day. Where practicable, clear a 1m radius around dead and fibrous/harked trees adjacent to containment lines prior to backburning, or wet down these trees as part of the backburn ignition. Brief all involved personnel on the location of cultural sites and threatened species prior to backburning, and adhere to the above guidelines.
Command & Control (NPWS FMM 4.2)	<ul style="list-style-type: none"> The fire command agency on site may assume control of the fire, but then must ensure the relevant land management agency is notified promptly. On the arrival of other command agencies, the initial incident controller will consult with regard to the ongoing command, control and incident management team requirements as per the relevant BFM Plan of Operations.
Containment Lines (NPWS FMM 2.2 & 3.9)	<ul style="list-style-type: none"> Construction of new containment lines should be avoided, except where they can be built by hand with minimal erosion potential. Only existing or previous trails or containment line routes will be used. Roads and trails to be used as containment lines but requiring works should be prioritised in consultation with relevant IMT and Fire Ground staff. All containment lines not required for other purposes should be closed immediately at the cessation of the incident. Where practicable, erosion control works should be incorporated into the containment line construction phase. All personnel involved in containment line construction should be briefed on both natural and cultural heritage sites in the location.
Earthmoving Equipment (NPWS FMM 4.2.20 & 4.3)	<ul style="list-style-type: none"> Earthmoving equipment may only be used with the prior consent of the senior NPWS officer, and then only if the probability of its success is high. Earthmoving equipment must be washed down prior to it entering NPWS estate. As far as possible, restrict its use to previously used containment lines. Earthmoving equipment must be always guided and supervised by an experienced NPWS officer and accompanied by a support vehicle. When engaged in direct or parallel attack this vehicle must be a firefighting vehicle. Containment lines constructed by earthmoving equipment should be at least 50m from depression lines in order to avoid erosion problems. Observe the Threatened Species and Cultural Heritage Operational Guidelines. Proposed containment lines to be constructed with earthmoving equipment should be surveyed to identify unknown cultural heritage sites.
Fire Advantage Recording	<ul style="list-style-type: none"> All fire advantages used during wildfire suppression operations must be mapped and where relevant added to the database. Wetting and foaming agents (surfactants) are permitted for use in wildfire suppression. The use of fire retardant is only permitted with the prior consent of the senior NPWS officer, and should be avoided where reasonable alternatives are available. Exclude the use of surfactants and retardants within 50m of reinforced, watercourses, dams and swamps. Areas where fire suppressive chemicals are used must be mapped and the used product's name recorded. Observe the Threatened Species Operational Guidelines.
Fire Suppression Chemicals (NPWS FMM 4.2.20 & 4.9)	<ul style="list-style-type: none"> Where practicable, containment lines should be stabilised and rehabilitated as part of the wildfire suppression operations.
Rehabilitation (NPWS FMM 3.1)	<ul style="list-style-type: none"> The potential impacts of smoke and possible mitigation tactics must be considered when planning for wildfire suppression and prescribed burning operations. If smoke becomes a hazard on local roads or highways, the police and relevant media must be notified.
Smoke Management (NPWS FMM 3.4)	<ul style="list-style-type: none"> The reserve may be closed to the public during periods of extreme fire danger or during wildfire suppression operations.
Visitor Management (NPWS FMM 3.6 & 4.13)	



Neighbour Information				
For further information, please refer to the Regional Contacts Database.				
Map ID	Property Name	Surname	Firstname	Phone
P130023	Cellaranea Property			
P130031	Clifton			
P130044	Carri Property			
P130052	Dunvegan			
P130054	Echo Glen			
P130059	Ferguson Property			
P130089	Karinya			
P130102	Lee Property			
P130103	Lowry Property			
P130153	Skinner and Richard-Preston Property			
P130157	Sunnyside			
P130164	Thorne Property			
P130178	Wattle Dale			
P130185	Williams Property			
P130190	Woolamba			



Communications Information		
Service	Channel	Location and Comments
NPWS - VHF	21 / 31	NPWS Channel 21 or 31 (depending on location)
NPWS - VHF (Fireground Comm)	33 / 43	For fire ground communications
NPWS - VHF (Portable Repeater)	15	Stored at Glen Innes / unportable
RFS - PMR - UHF	48	Magistrate Channel 48. Linked to Frogshollow 52.
RFS - GRN	-	No service available in NTR
CB - UHF	15	As appropriate on the day
Aircraft - VHF	119.10	
Mobile Phone - CDMA	Yes	
Mobile Phone - GSM	No	
Satellite Phone		Sat Ph No. 1 - 0420 100 222 stored at Glen Innes Sat Ph No. 2 - 0420 101 333 stored at Glen Innes



Fire Thresholds	
Overburnt	Fire thresholds have been exceeded. <i>Protect from fire as far as possible.</i>
Vulnerable	The area will be Overburnt if it burns this year. <i>Protect from fire as far as possible.</i>
Recently Burnt	Time since fire is less than the optimum interval, but before that it was within threshold. <i>Protect from fire as far as possible.</i>
Within Threshold	Fire history is within the threshold for vegetation in this area. <i>A burn is neither required nor should one necessarily be avoided.</i>
Almost Underburnt	The area is close to its threshold and may become underburnt with the absence of fire. <i>A prescribed burn may be advantageous. Consider allowing unplanned fires to burn.</i>
Underburnt	Fire frequency is below fire thresholds in the area. <i>A prescribed burn may be advantageous. Consider allowing unplanned fires to burn.</i>
Unknown	Insufficient data to determine fire threshold.

NB: Fire thresholds are defined for vegetation communities to conserve biodiversity.

Contact Information		
Agency	Position / Location	Phone
DEC - NPWS	Regional Duty Officer	0428 345 780
	Area Manager	02 6739 0713 0409 243 167 02 6732 5130 (fax)
	Fire Management Officer	02 6776 0014 0409 220 613 02 6771 1894 (fax)
	Glen Innes Area Office	02 6732 5133 02 6732 5130 (fax)
	Aboriginal Heritage Conservation Officer	02 6732 5133
	Regional Office	02 6776 0000 02 6771 1894 (fax)
Rural Fire Service	Fire Control Officer	02 6732 7046 0428 639 116 02 6732 3746 (fax)
	Severn Fire Control Centre	02 6732 3746 (fax)
NSW Fire Brigade	Emergency	000
SES	Glen Innes Station	02 6732 5379
	Emergency	000
Police	Deepwater (Severn) Unit	0403 568 236 02 6734 5412 (fax)
	Emergency	000
Ambulance	Glen Innes Station	02 6732 9799
	Emergency	000
Hospital	Glen Innes Station	02 6732 9711 (fax)
	Emergency	000
DNR	Glen Innes Station	13 1233
	Emergency	02 6766 7429 (fax)
Forests NSW	94 Taylor St, Glen Innes	02 6739 0200 02 6739 0143 (fax)
	Emergency	02 6732 5901 02 6732 4059 (fax)
Council	134-136 Meade St, Glen Innes	02 6665 6950 02 6665 9891 (fax)
	North East Region, 24 hr Fire Number	02 6665 9891 (fax)
Local Aboriginal Land Council (LALC)	Severn Shire	02 6732 2555
	Glen Innes	02 6732 1150 02 6732 6413 (fax)