

# Northern Rivers Region & North Coast Region

## Bundjalung NP, Iluka NR & Tabbimoble Swamp NR

### Fire Management Strategy (Type 2)

2006

Sheet 1 of 2

This strategy should be used in conjunction with aerial photography and field reconnaissance during incidents and the development of incident action plans.

These data are not guaranteed to be free from error or omission. The NSW National Parks and Wildlife Service and its employees accept liability for any act done or information in the data and any consequences of such acts or omissions. This document is copyright. Apart from any fair dealing for the purposes of study, research, criticism or review, as permitted under the Copyright Act, no part may be reproduced by any process without written permission.

The NSW National Parks and Wildlife Service is part of the Department of Environment and Conservation. Published by the Department of Environment and Conservation (NSW), June 2006.  
 Contact: NSW National Parks and Wildlife Service, North Coast Region, PO Box 363, Grafton, 2460  
 ISBN 1 74137 453 7 DEC Number: 2006/107 Last Updated: 20 June 2006

This strategy is a relevant Plan under Section 33(4) and Section 44(3) of Rural Fires Act 1997.

Department of Environment and Conservation (NSW)

Endorsed by: \_\_\_\_\_ Date: / /

Director Northern Parks & Wildlife Division

#### Operational Guidelines

Refer to Strategy for Fire Management 2003 and Fire Management Manual 2004.  
 Brief all personnel involved in suppression operations on the following issues:

Resource	Guidelines
<b>Aboriginal Cultural Heritage Site Management</b> (NPWS FMM 4.1.1)	Aboriginal sites are not shown on this version. Vulnerable sites will be shown on the operational version of this strategy following consultation with the Aboriginal Community.
<b>Historic Heritage Management</b> (NPWS FMM 4.1.0)	All sites within current recreation areas and are therefore protected by Asset Protection Zones.
<b>Threatened Fauna Management</b> (NPWS FMM 4.1.2 & 5.2)	Avoid impact on wetlands, littoral rainforest and streams. Protect large and hollow-bearing trees. FAZ - No water point. No use of foam. No use of retardant. No earthmoving machinery. No helipad construction.
<b>Threatened Flora Management</b> (NPWS FMM 4.1.2)	Avoid impact on wetlands. Littoral rainforest is an endangered ecological community. Avoid fire.
<b>Threatened Property</b>	Property owners with assets at risk from a wildfire event should be kept informed regarding the progress of the fire and asked for an assessment of their current level of asset protection preparedness.
<b>General</b>	Foam should be used to increase the effectiveness of water bombing.
<b>Aerial Water Bombing</b> (NPWS FMM 4.4 & NSW Fire Agencies Aviation SOPs O2 / NPWS Guidelines for Effective Aircraft Management)	Aerial ignition may be used during back-burning or fuel reduction operations. Utilise incendiaries to rapidly progress back-burns down slope where required.
<b>Aerial Ignition</b> (NPWS FMM 4.2.20 & 4.4 / NSW Fire Agencies Aviation SOPs O2 / NPWS Guidelines for Effective Aircraft Management)	Clear a 1m radius around dead and fibrous barked trees adjacent to containment lines prior to backburning, or wet down these trees as part of the backburn ignition.
<b>Backburning</b> (NPWS FMM 4.8)	The first combatant agency on site may assume control of the fire, but then must ensure the NPWS is notified promptly. On the arrival of other combatant agencies, the initial incident controller will consult with regard to the ongoing command, control and incident management team requirements as per the relevant BEMAC Plan of Operations.
<b>Command &amp; Control</b> (NPWS FMM 4.2)	No new containment lines in wetlands. New containment lines require the prior consent of a senior NPWS officer. Containment lines should be stabilised and rehabilitated as part of the wildfire suppression operation.
<b>Containment Lines</b> (NPWS FMM 2.2 & 3.9)	Earthmoving equipment may only be used with the prior consent of a senior NPWS officer. Earthmoving equipment must be always guided and supervised by an experienced officer, and accompanied by a support vehicle. When engaged in direct or parallel attack this vehicle must be a firefighting vehicle. Earthmoving equipment should be washed down prior to it entering NPWS estate.
<b>Earthmoving Equipment</b> (NPWS FMM 4.2.20 & 4.3)	All fire advantages used during wildfire suppression operations must be mapped and where relevant added to the database. The use of fire retardant is only permitted with the prior consent of the senior NPWS officer, and should be avoided where reasonable alternatives are available. Exclude the use of surfactants and retardants within 50m of rainforest, watercourses, dams and swamps.
<b>Fire Advantage Recording</b>	Containment lines should be stabilised and rehabilitated as part of the wildfire suppression operation. All opened and new containment lines not required for other purposes should be closed at the cessation of the incident.
<b>Fire Suppression Chemicals</b> (NPWS FMM 4.2.20 & 4.9)	If smoke becomes a hazard on local roads or highways, the police and relevant media must be notified. Smoke management must be in accordance with relevant RTA traffic management guidelines.
<b>Rehabilitation</b> (NPWS FMM 5.1)	The reserve may be closed to the public during periods of extreme fire danger or during wildfire suppression operations.
<b>Smoke Management</b> (NPWS FMM 3.4)	
<b>Visitor Management</b> (NPWS FMM 3.6 & 4.1.3)	

#### Contact Information

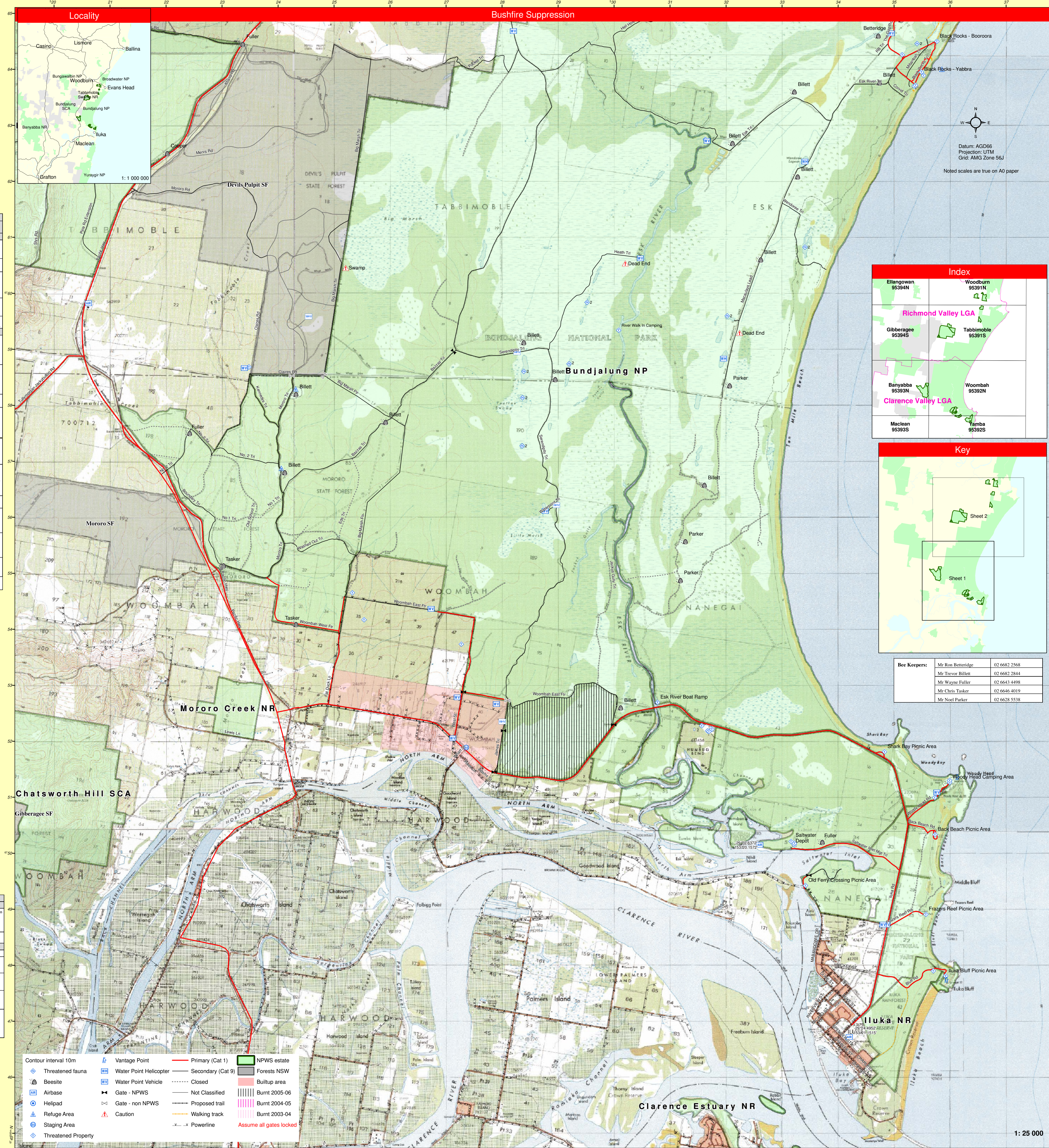
Agency	Position / Location	Phone
NPWS	Works depot - Iluka	66 463 203
	NCR Regional Office - Grafton	6641 1300 6643 2569 (fax)
	NSR Regional Office - Altonville	6627 0200 6628 3977 (fax)
	Richmond River Area Depot	6628 3786
Emergencies		000
	Rural Fire Service	Duty Officer: 0500 881 866 Clarence Valley Fire Control Centre: 6644 5135 Lismore: 6622 6088 Maclean Station: 6645 4605 Evans Head: 6682 4400
NSW Fire Brigade	Maclean Unit	6645 3454
	Goolahbah	6625 2070
SES	Woodburn	6682 3269
	Police	Police Assistance Line: 131444 Iluka: 6646 6019 Evans Head: 6682 4302 Woodburn: 6682 2444 Maclean: 6645 2444 Contacts apart from emergency: 131233
Ambulance	Royal Coast Guard	Evans Head: 6682 4888
DIPNR	Grafton	6646 2000
	Dept. of Agriculture	Grafton: 6640 1400 Wollongbar: 6626 1200
Forests NSW	24 hour fire calls	6655 6950 Casino: 6662 0900
	DPI	NSW Fisheries - Ballina: 6686 2018 Clarence Valley: 6643 3886 Richmond Valley Council: 6660 0300
Council	Berrigan Council - Yamba	6646 1664
	Yerrig - Maclean	6645 3676
	Bundjalung Native Title Claimant	6683 1816
	Jah LALC	6683 4413
	Bogal LALC	6683 2510
Dept. of Defence	Officer in Charge	6682 4740
Neighbours	Contact details stored at NPWS Regional Offices	

#### Suppression Strategies

Current FDR	Forecast FDR	Action
Low - Mod	Low - Mod	Undertake direct, parallel or indirect attack along existing containment lines. Where practicable consider minimising the fire area in accordance with the requirements of any proposed prescribed burns.
Low - Mod	High	In order to minimise the fire area and secure the flanks as soon as possible, undertake direct, parallel or indirect attack along the closest containment lines. Pay particular attention to the flank on the next predicted down wind side.
High	All	Undertake indirect attack along existing or newly constructed containment lines. Secure and deepen containment lines along the next predicted downwind side of the fire. Consider broader than normal containment strategies to accommodate the potential for spotting.
All	All	Ensure there is sufficient time to secure containment lines prior to the fire jumping over them, otherwise fall back to the next potential line. Use existing containment lines. Do not construct new lines unless of vital importance for life and property protection. Retain trees with hollows. Take steps to clear around base and/or set down trees with hollows that occur on the edge of containment lines.

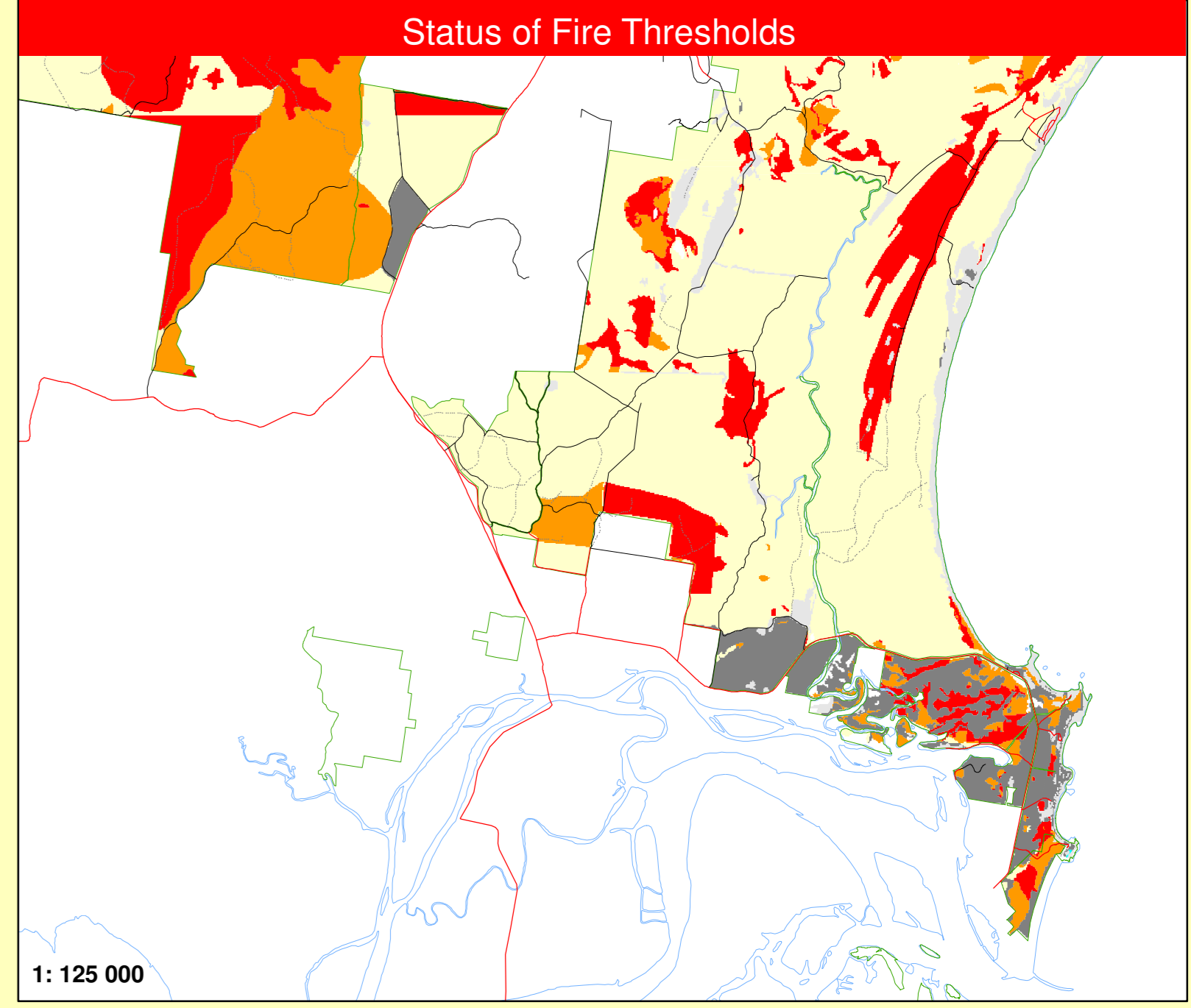
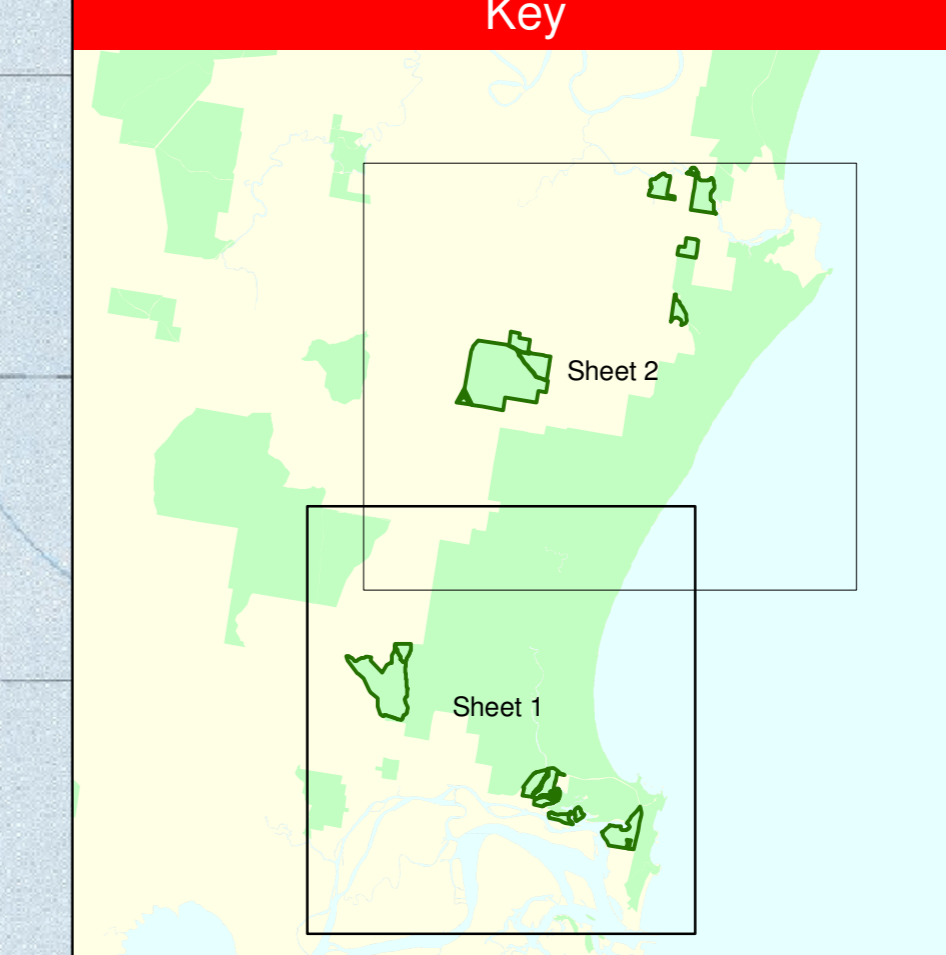
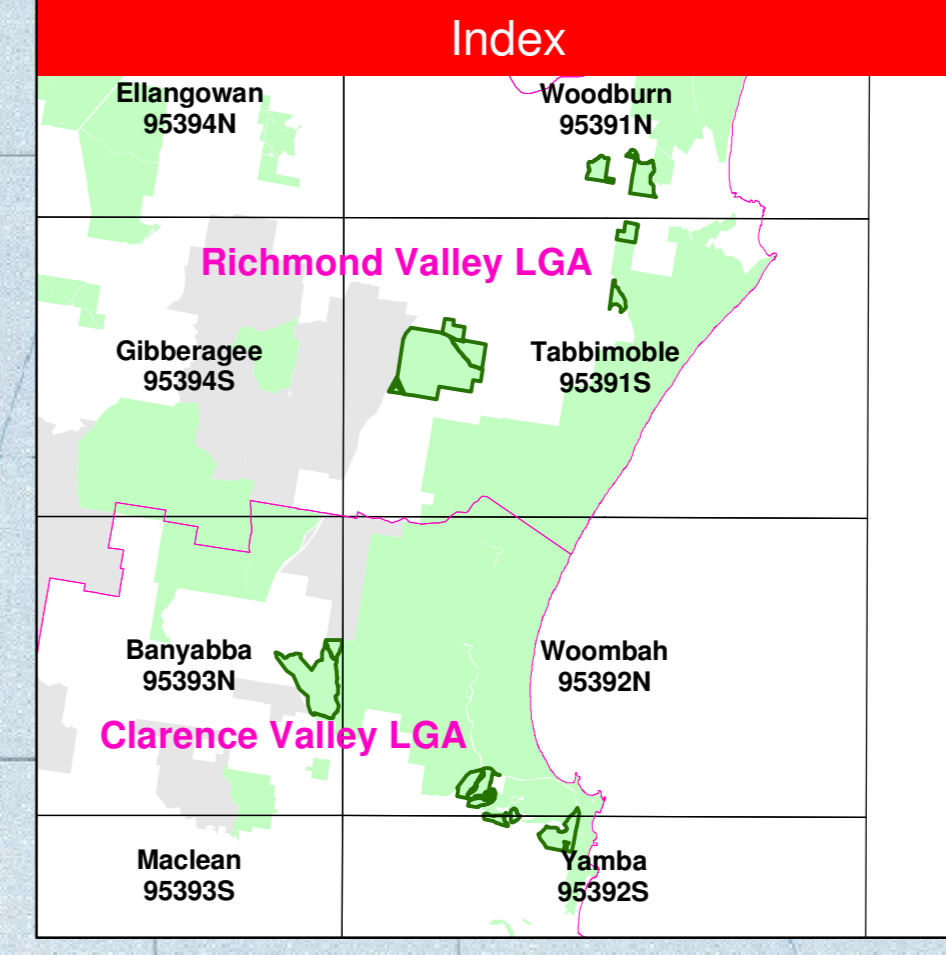
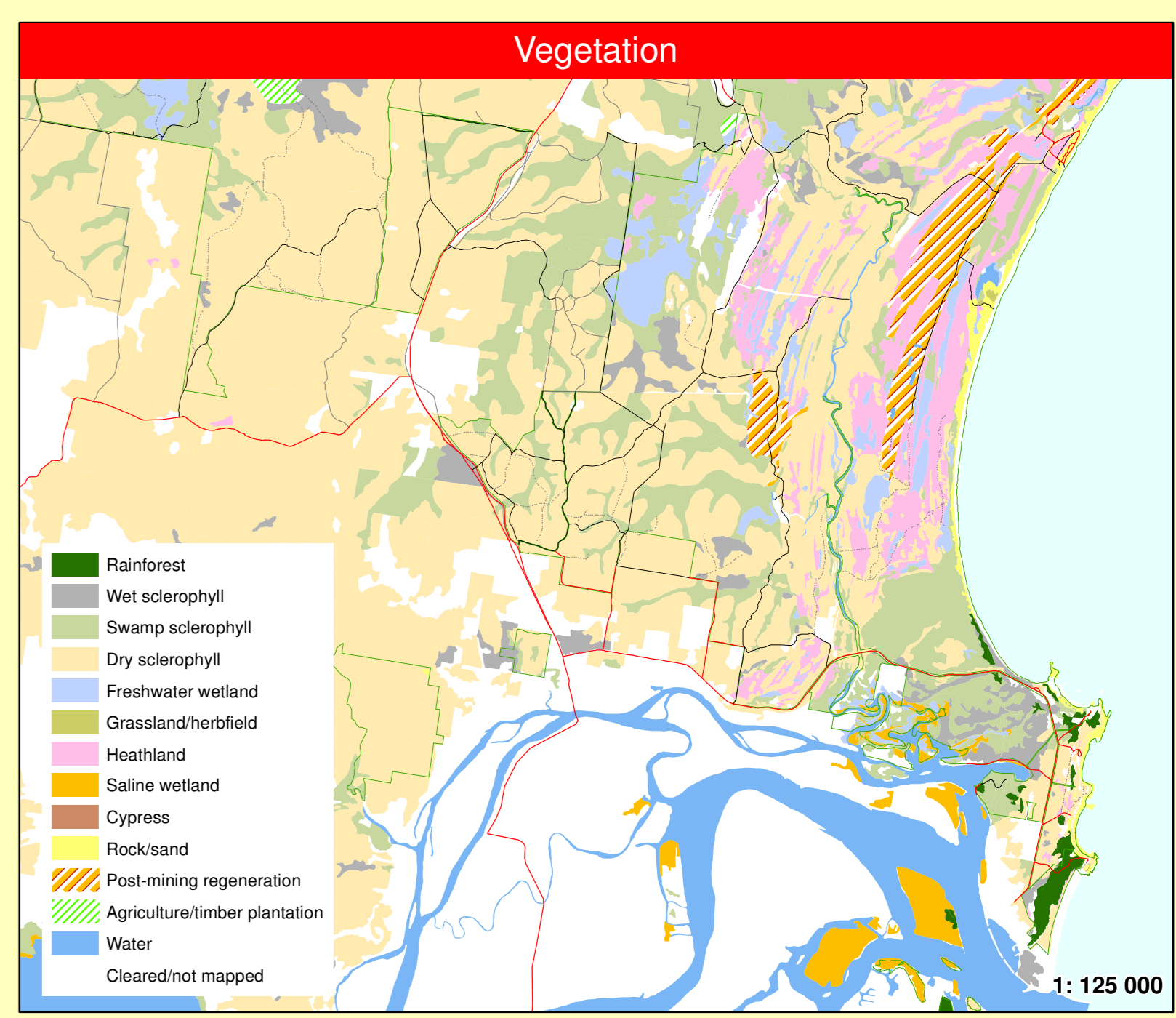
#### Communications Information

Service	Channel	Location and Comments
NPWS - VHF	10	Clarence Peak reserve channel 58 Reach coverage in northern half
NPWS - VHF (Fireground Comms)	42	Simplex for Clarence Peak (Chat channel)
NPWS - VHF (Portable Repeaters)	15	Green Code. Stored at Grafton / Transportable.
RFS - PMR - UHF	38	Clarence Peak
RFS - GRN	-	No service available.
CB - UHF	-	To be confirmed with RFS brigade captain on the day.
Aircraft - VHF	125.45	To be directed by Incident Controller
Mobile Phone - CDMA		Partial coverage.
Mobile Phone - GSM		Partial coverage.
Satellite Phone		Stored at Cliffs Coast



#### Legend

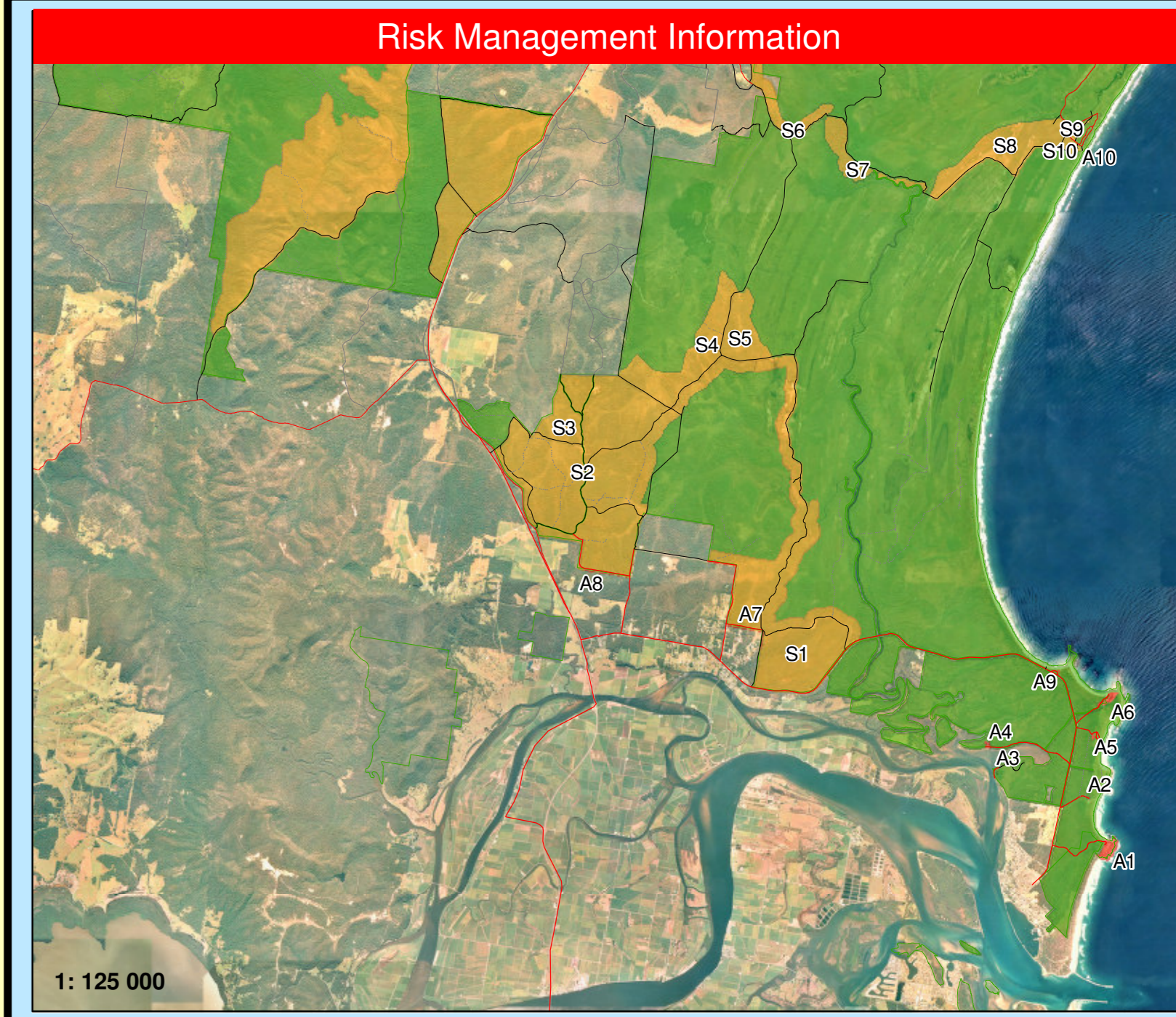
- Contour interval 10m
- Threatened fauna
- Beesite
- Airbase
- Helipad
- Refuge Area
- Staging Area
- Threatened Property
- Vantage Point
- Water Point Helicopter
- Water Point Vehicle
- Gate - NPWS
- Gate - non NPWS
- Primary (Cat 1)
- Secondary (Cat 9)
- Closed
- Not Classified
- Proposed trail
- Walking track
- Powerline
- NPWS estate
- Forests NSW
- Builtup area
- Burnt 2005-06
- Burnt 2004-05
- Burnt 2003-04
- Assume all gates locked



#### Fire Thresholds

Threshold	Description
<b>Overburn</b>	Fire thresholds have been exceeded. Protect from fire as far as possible.
<b>Vulnerable</b>	The area will be Overburnt if a burn this year. Protect from fire as far as possible.
<b>Recently Burnt</b>	Fire history is within the threshold for vegetation in this area. The area is close to its threshold and may become underburnt with the absence of fire. Avoid fires if possible.
<b>Within Threshold</b>	Fire history is within the threshold for vegetation in this area. A burn is neither required nor should one necessarily be avoided.
<b>Almost Underburnt</b>	The area is close to its threshold and may become underburnt with the absence of fire. A prescribed burn may be advantageous. Consider allowing unplanned fires to burn.
<b>Underburnt</b>	Fire frequency is below fire thresholds in the area. A prescribed burn may be advantageous. Consider allowing unplanned fires to burn.
<b>Unknown</b>	Insufficient data to determine fire threshold.

NR: Fire thresholds are defined for vegetation communities to conserve biodiversity.



#### Fire Management Zones (Southern)

Zone	Description	Action	Responsibility
Iluka Bluff (A1) 250m x 250m	Prescribed burns when overall fuel hazard reaches high (approx. 140ha)	NPWS	
Fraser Bay (A2) 50m x 50m	Prescribed burns when overall fuel hazard reaches high (approx. 140ha)	NPWS	
Old Ferry Crossing (A3) 50m x 50m	Prescribed burns when overall fuel hazard reaches high (approx. 140ha)	NPWS	
Salwater Depot (A4) 120m x 80m	Prescribed burns when overall fuel hazard reaches high (approx. 140ha)	NPWS	
Back Beach (A5) 150m x 70m	Prescribed burns when overall fuel hazard reaches high (approx. 140ha)	NPWS	
Woody Head (A6) 580m x 150m	Prescribed burns when overall fuel hazard reaches high (approx. 140ha)	NPWS	
Woombah East (A7) 328m x 20m	Prescribed burns when overall fuel hazard reaches high (approx. 140ha)	NPWS	
Woombah West (A8) 2650m x 20m	Prescribed burns when overall fuel hazard reaches high (approx. 140ha)	NPWS	
Shark Bay Picnic Area (A9) 40m x 30m	Prescribed burns when overall fuel hazard reaches high (approx. 140ha)	NPWS	
Black Rocks (A10) 100m x 60m	Mechanical treatment when overall fuel hazard reaches moderate.	NPWS	

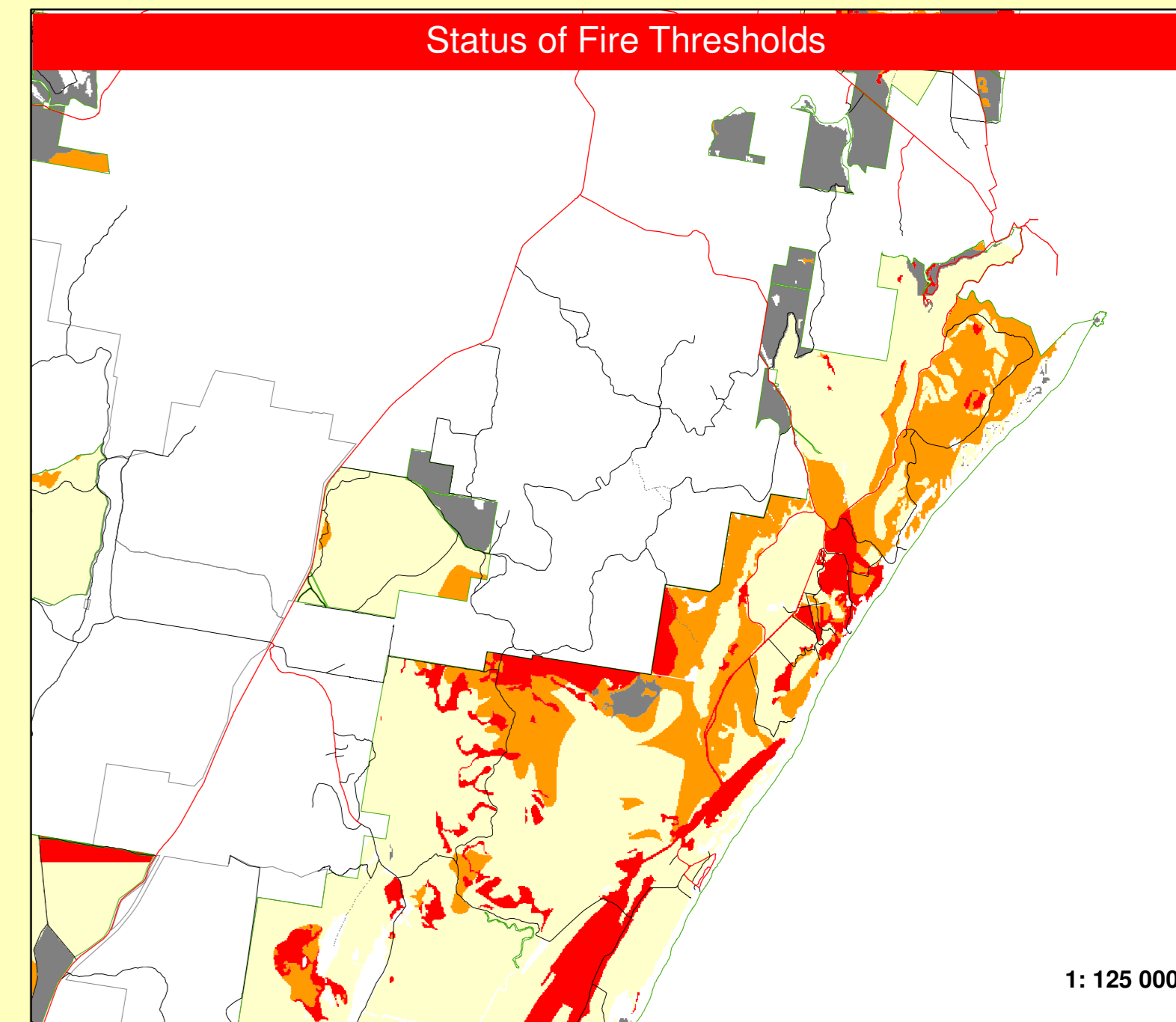
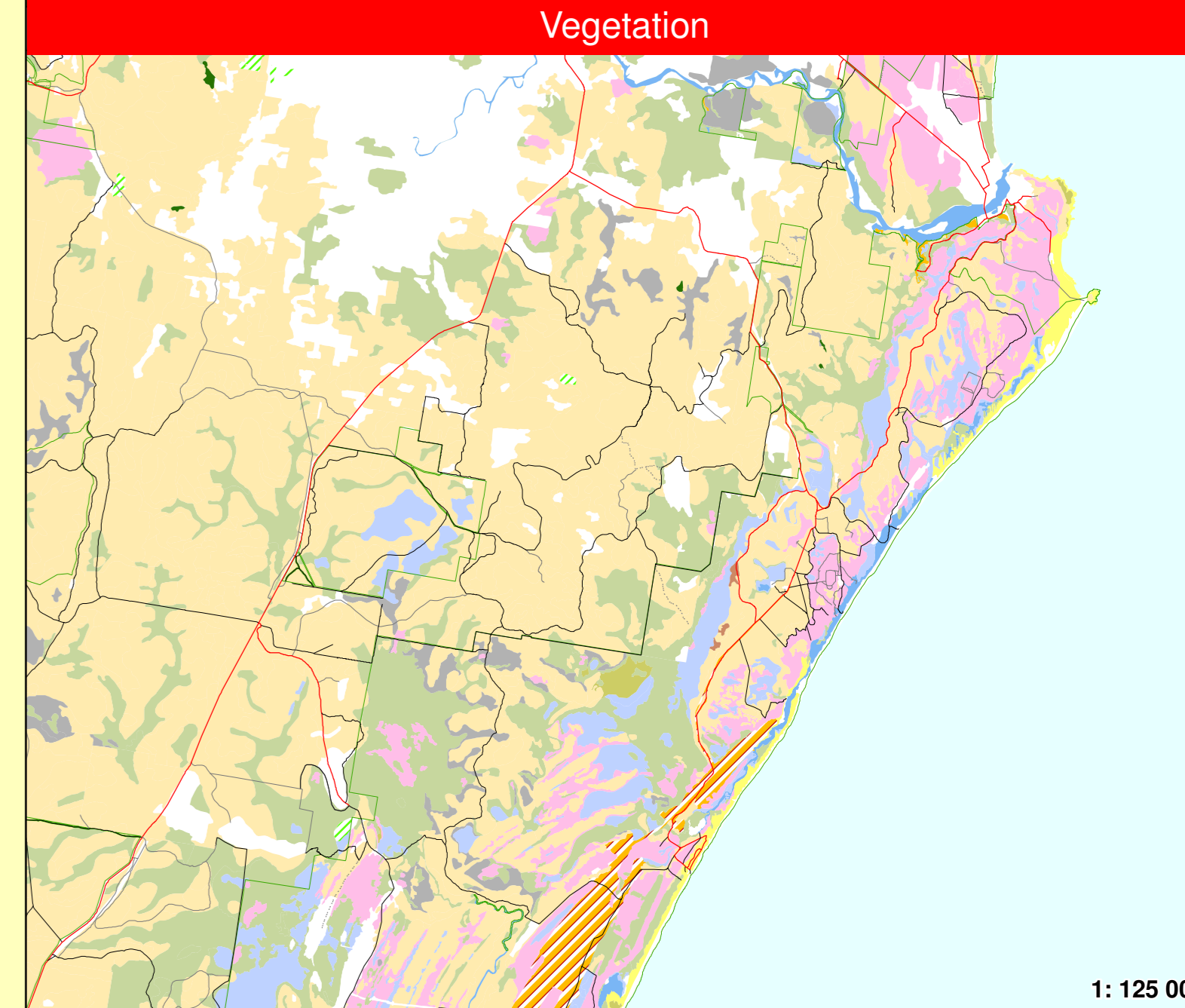
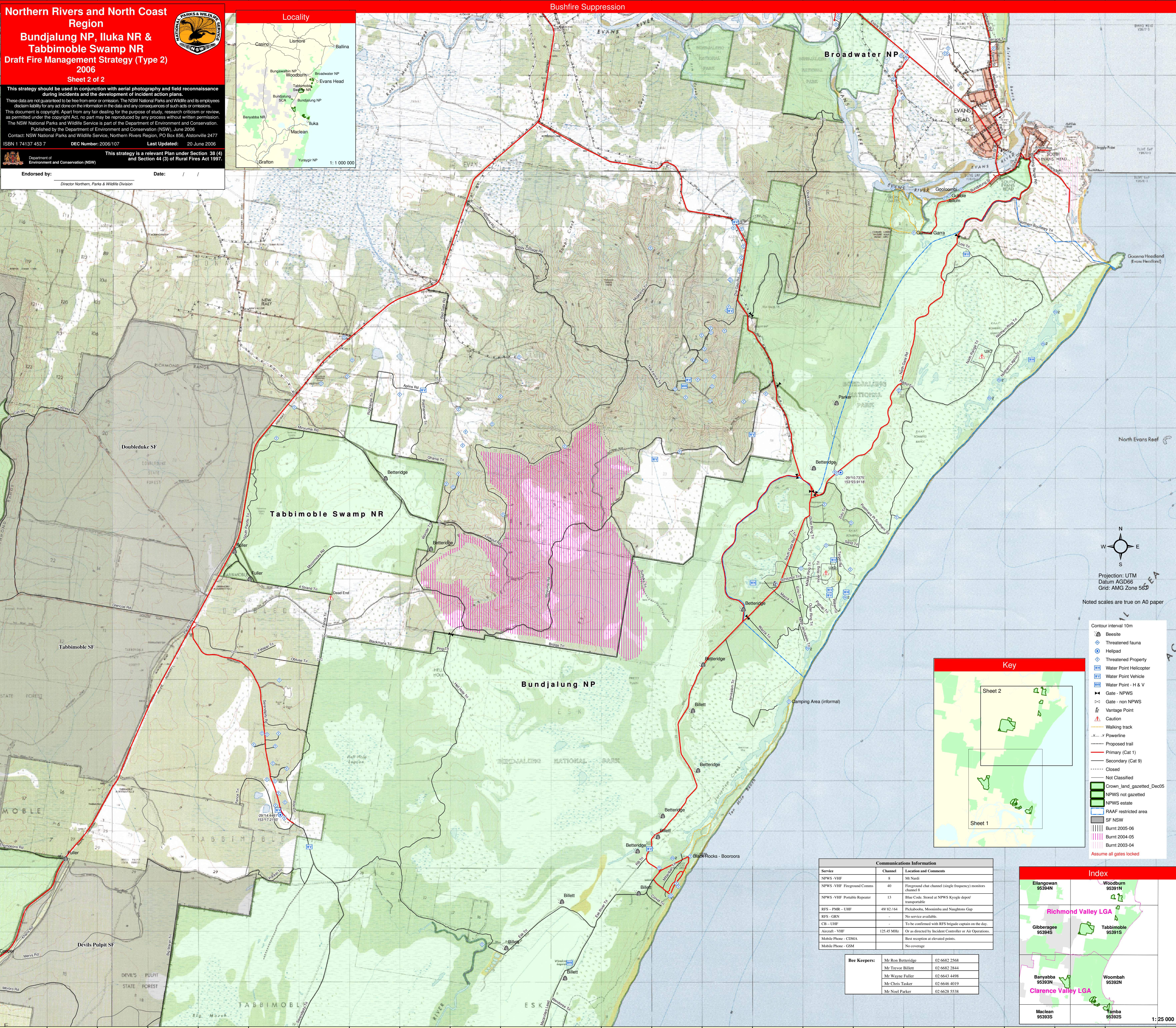
**Northern Rivers and North Coast Region**  
**Bundjalung NP, Iluka NR & Tabbimoble Swamp NR**  
**Draft Fire Management Strategy (Type 2)**  
**2006**  
**Sheet 2 of 2**

This strategy should be used in conjunction with aerial photography and field reconnaissance during incidents and the development of incident action plans.

These data are not guaranteed to be free from error or omission. The NSW National Parks and Wildlife and its employees accept liability for any act done on the information in the data and any consequences of such acts or omissions. This document is copyright. Apart from any fair dealing for the purpose of study, research, criticism or review as permitted under the copyright Act, no part may be reproduced by any process without written permission. The NSW National Parks and Wildlife Service is part of the Department of Environment and Conservation. Published by the Department of Environment and Conservation (NSW), June 2006. Contact: NSW National Parks and Wildlife Service, Northern Rivers Region, PO Box 856, Alstonville 2477. ISBN 1 74137 453 7 DEC Number: 2006/107 Last Updated: 20 June 2006

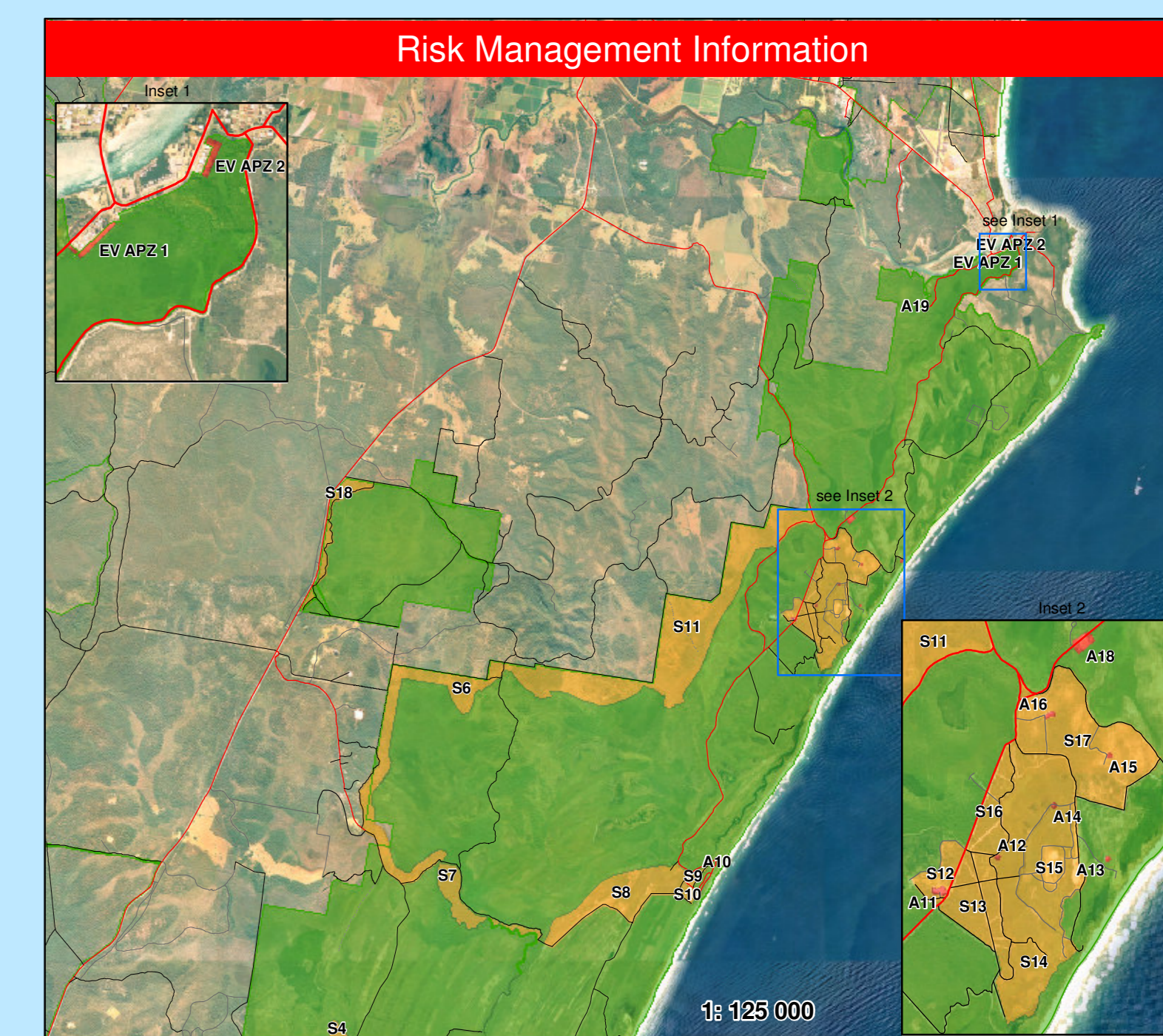
Department of Environment and Conservation (NSW)  
 This strategy is a relevant Plan under Section 38 (4) and Section 44 (3) of Rural Fires Act 1997.

Endorsed by: \_\_\_\_\_ Date: / /  
 Director Northern Parks & Wildlife Division



Fire Threshold	Description
Overburnt	Fire thresholds have been exceeded. <i>Protect from fire as far as possible.</i>
Vulnerable	The area will be Overburnt if it burns this year. <i>Protect from fire as far as possible.</i>
Recently Burnt	Time since fire is less than the optimum interval, but before that it was within threshold. <i>Avoid fires if possible.</i>
Within Threshold	Fire history is within the threshold for vegetation in this area. <i>A burn is neither required nor should one necessarily be avoided.</i>
Almost Underburnt	The area is close to its threshold and may become underburnt with the absence of fire. <i>A prescribed burn may be advantageous. Consider allowing unplanned fires to burn.</i>
Underburnt	Fire frequency is below fire thresholds in the area. <i>A prescribed burn may be advantageous. Consider allowing unplanned fires to burn.</i>
Unknown	Insufficient data to determine fire threshold. <i>Insufficient data to determine fire threshold.</i>

*NB. Fire thresholds are defined for vegetation communities to conserve biodiversity.*



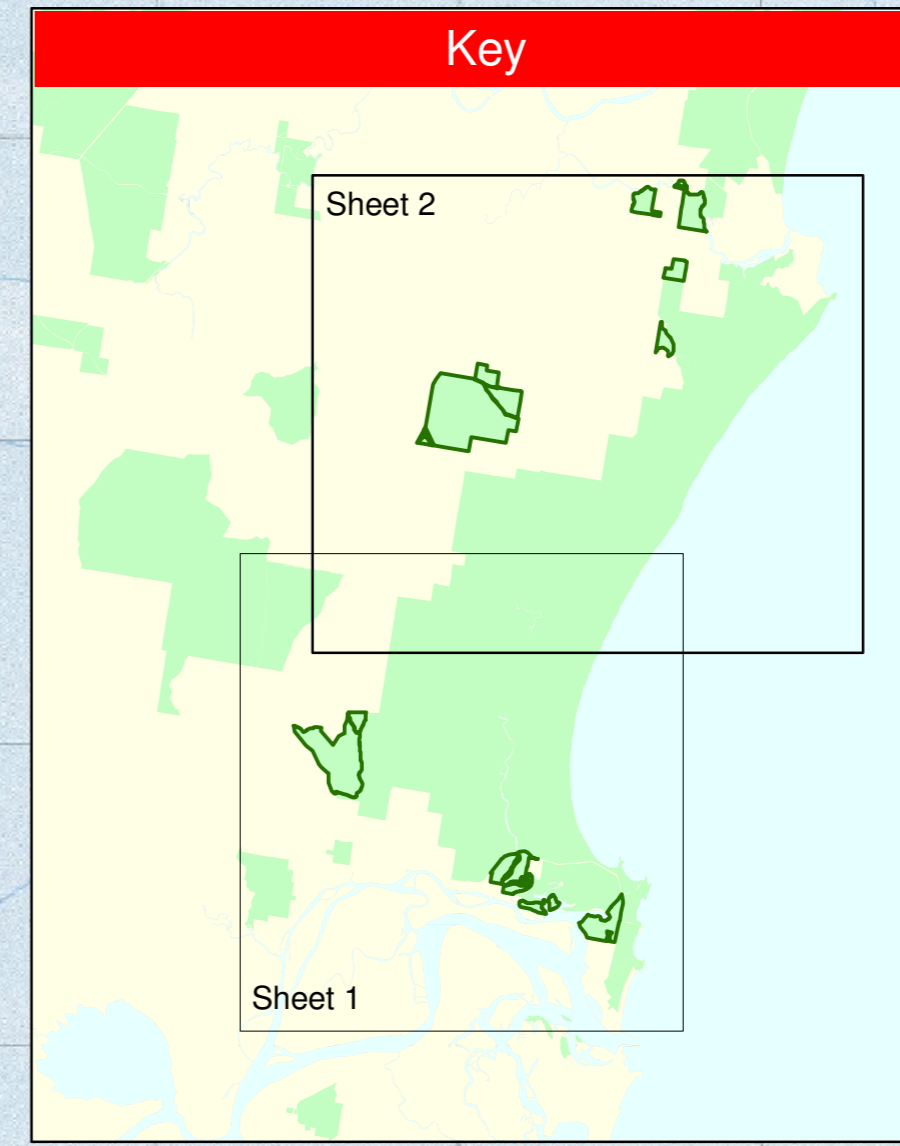
Zone	Description	Action	Responsibility
Asset Protection Zones	The objective of APZs is the protection of human life and property. This will have precedence over guidelines for the management of biodiversity. Maintain overall fuel hazard at moderate or below.		
Black Rocks (A10) 100m x 60m	Mechanical treatment when overall fuel hazard reaches moderate.		NPWS
Brown Quad (A11) 100m x 40m	Mechanical treatment when overall fuel hazard reaches moderate.		RAAF
20m reflector (A13) 22m x 24m	Mechanical treatment when overall fuel hazard reaches moderate.		RAAF
Charlie Quad (A14) 20m x 24m	Mechanical treatment when overall fuel hazard reaches moderate.		RAAF
Vankee reflector (A15) 25m x 15m	Mechanical treatment when overall fuel hazard reaches moderate.		RAAF
D Quad (A16) 60m x 20m	Mechanical treatment when overall fuel hazard reaches moderate.		RAAF
Postman (A17) 35m x 35m	Mechanical treatment when overall fuel hazard reaches moderate.		RAAF
Holt North (A18) 85m x 85m	Mechanical treatment when overall fuel hazard reaches moderate.		RAAF
Ganna Gara (A19) 5m x 5m	Mechanical treatment when overall fuel hazard reaches moderate.		NPWS
EV APZ1 220m x 30m	Mechanical treatment when overall fuel hazard reaches moderate.		NPWS
EV APZ2 200m x 30m	Mechanical treatment when overall fuel hazard reaches moderate.		NPWS
Strategic Fire Advantage Zones	The objective of SFZs is to reduce fire intensity across larger areas. Maintain Overall Fuel Hazard at High or below, however adherence to guidelines for biodiversity will take precedence where practical.		
Big Mank (S1) 230 ha	Prescribed burn when overall fuel hazard reaches high.		NPWS
Heath (S2) 110 ha	Prescribed burn when overall fuel hazard reaches high.		NPWS
Hell Hole (S6) 252 ha	Prescribed burn when overall fuel hazard reaches high.		NPWS
Eak (S7) 84 ha	Prescribed burn when overall fuel hazard reaches high.		NPWS
Macaulay (S8) 205 ha	Prescribed burn when overall fuel hazard reaches high.		NPWS
Mintahah (S9) 19 ha	Prescribed burn when overall fuel hazard reaches high.		NPWS
Black Rocks (S10) 12 ha	Prescribed burn when overall fuel hazard reaches high.		NPWS
Pretty Plain (S11) 570 ha	Prescribed burn when overall fuel hazard reaches high.		NPWS
Master quad (S12) 12 ha	Prescribed burn when overall fuel hazard reaches high.		RAAF/NPWS
Emu (S13) 36 ha	Prescribed burn when overall fuel hazard reaches high.		RAAF/NPWS
Otter target (S14) 90 ha	Prescribed burn when overall fuel hazard reaches high.		RAAF/NPWS
Inner target (S15) 44 ha	Prescribed burn when overall fuel hazard reaches high.		RAAF/NPWS
Parris (S16) 20 ha	Prescribed burn when overall fuel hazard reaches high.		RAAF/NPWS
D Quad (S17) 31 ha	Prescribed burn when overall fuel hazard reaches high.		RAAF/NPWS
Pacific, Tabbimoble (S18) 51 ha	Prescribed burn when overall fuel hazard reaches high.		NPWS
Land Management Zones	The objective of LMZs is to conserve biodiversity and protect cultural heritage. Manage fire consistent with fire thresholds.		
Bundjalung LMZ & Tabbimoble Swamp LMZ	Refer to fire thresholds map and table as part of decision making process regarding suppressing or applying fire.		NPWS

Projection: UTM  
 Datum: AGD66  
 Grid: AMG Zone 56D

North  
 W E  
 S

Noted scales are true on A0 paper

- Contour interval 10m
- Beesite
- Threatened fauna
- Helipad
- Threatened Property
- Water Point Helicopter
- Water Point Vehicle
- Water Point - H & V
- Gate - NPWS
- Gate - non NPWS
- Vantage Point
- Caution
- Walking track
- Powerline
- Proposed trail
- Primary (Cat 1)
- Secondary (Cat 9)
- Closed
- Not Classified
- Crown land gazetted Dec05
- NPWS not gazetted
- NPWS estate
- RAAF restricted area
- SF NSW
- Burnt 2005-06
- Burnt 2004-05
- Burnt 2003-04
- Assume all gates locked



Service	Channel	Location and Comments
NPWS-VHF	8	Mt Nardi
NPWS-VHF	Fireground Comm	Fireground chat channel (single frequency) monitors Channel 9
NPWS-VHF	Portable Reporter	Blue Code. Stored at NPWS Kingle depot/transportable
RFS - PMR - UHF	49 K2 / 64	Pickaboos, Moonambi and Naughtons Cup
RFS - GSM	-	No service available.
CB - UHF	-	To be confirmed with RFS brigade captain on the day.
Aircraft - VHF	125.45 MHz	Or as directed by Incident Controller or Air Operations.
Mobile Phone - CDMA	-	Best reception at elevated points.
Mobile Phone - GSM	-	No coverage

Bee Keepers:	Name	Phone
	Mr Ron Betteridge	02 6682 2568
	Mr Trevor Billett	02 6682 2844
	Mr Wayne Fuller	02 6643 4498
	Mr Chris Tasker	02 6646 4019
	Mr Noel Parker	02 6628 5338

