

**Brigalow Park Reserves**  
 Brigalow Park Nature Reserve  
 Brigalow Park State Conservation Area  
**Fire Management Strategy**  
 2013 - 18

**Office of Environment & Heritage**

This strategy should be used with aerial photography and field reconnaissance. This is a relevant Plan under Section 38 (4) and Section 44 (3) of Rural Fires Act 1997. These data are not guaranteed to be free from error or omission. The NSW National Parks and Wildlife and its employees disclaim liability for any act done on the information in the data and any consequences of such acts or omissions. This document is copyright. Apart from any fair dealing for the purpose of study, research criticism or review, as permitted under the copyright Act, no part may be reproduced by any process without written permission. The NSW National Parks and Wildlife Service is part of the Office of Environment and Heritage. Published by: Office of Environment and Heritage (NSW). Contact: NPWS Northern Plains Region, P.O. Box 72 Narrabri NSW 2390. Ph 67927350

ISBN 978 1 74359 205 2 OEH 2013 / 0504 Date Approved: 3 April 2013

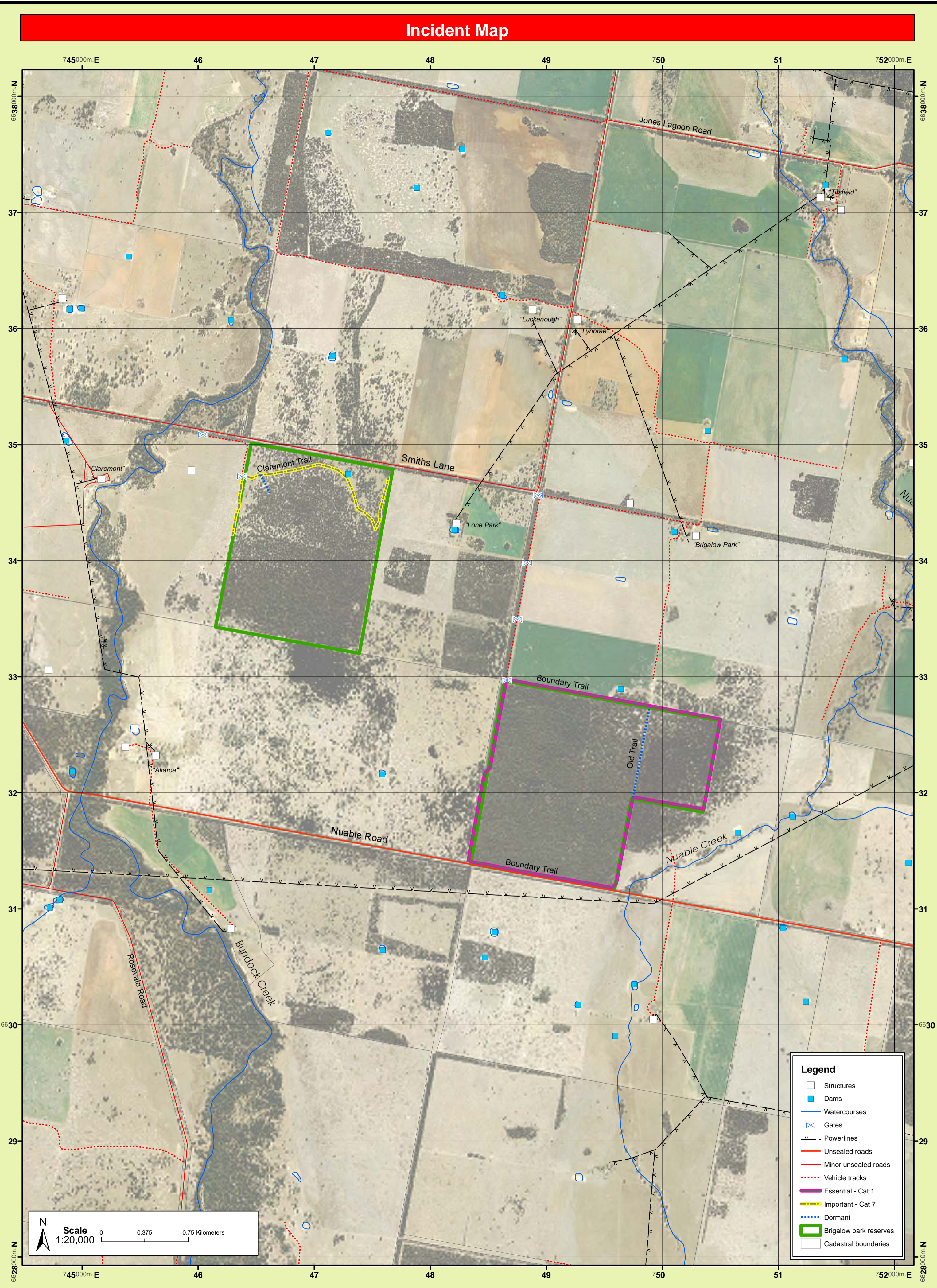
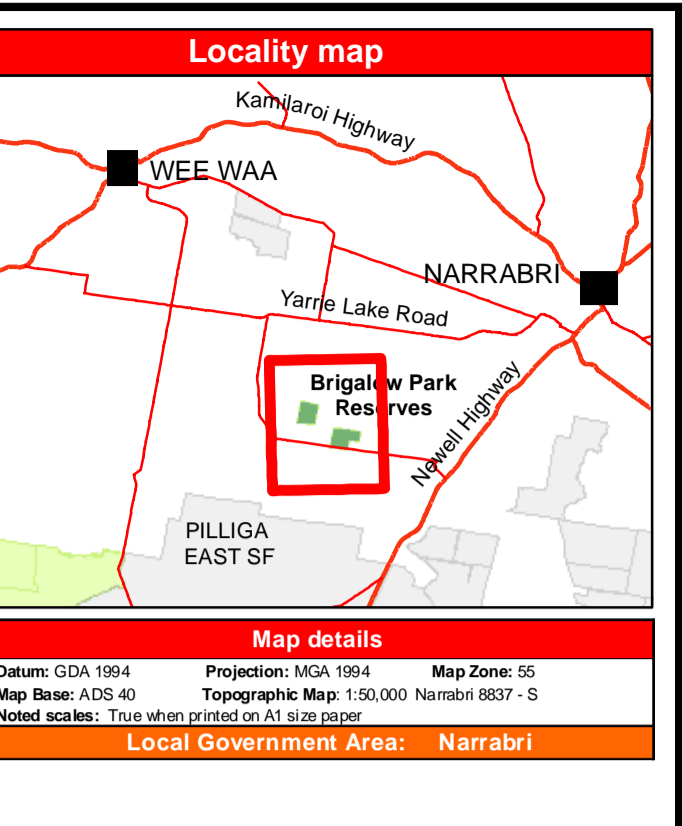
**Related reference documents**

- National Parks and Wildlife Service (2011) Fire Management Manual
- National Parks and Wildlife Service (2002) Brigalow Park Nature Reserve Plan of Management
- Hunter, JT (2006) Vegetation and floristics of Brigalow Park and Claremont Nature Reserves. Report to NSW NPWS

Communications Information		
Service	Channel	Location and Comments
NPWS VHF	30	• The Governor
RFS	P069	• The Governor
UHF - CB		• Small fires - Channel 21
		• Large fires - determined by IMT
Aviation Cellphone	127.4	• CTA#
		• Telstra 3G coverage variable

Contact Information		
Agency	Position / Location	Phone
National Parks & Wildlife Service	Duty Officer (24 hour) Narrabri Office (bus. hours)	6792 4680 6792 7300
NSW RFS Namoi-Gwydir Zone	Zone Manager Duty Officer	0427 401 124 6792 3667
RFS Rural Fire Brigades	Bohena - Peter Gett	6793 2165 0429 932 132
NSW Fire Brigade	Newcastle	4929 7177
Emergency Services	Police, Fire, Ambulance	000
SES		13 2500
Police	Narrabri	6792 7199
Council	Narrabri Shire	6792 6877



**Vegetation**

**Broad vegetation types**

- Brigalow Belah forests & woodlands

**Status of Biodiversity Thresholds**

Threshold	Description
Too frequently burnt	Consecutive fire intervals are shorter than the recommended minimum interval.
Vulnerable to frequent fire	The current fire interval is shorter than the recommended minimum interval.
Within threshold	The time-since-fire is greater than the recommended minimum, and less than the recommended maximum.
Long unburnt	The current fire interval is longer than the suggested interval.

**Bushfire Risk Management Strategies**

**Land Management Zones**

The objective of this zone is to conserve biodiversity and protect cultural heritage by applying biodiversity thresholds.

**Prescribed burn availability**

**Unavailable for prescribed burning**

This area is unavailable for prescribed burning, due to NIL or LOW OFP, or ecological requirements.

Availability for burning must be referenced with the Status of Biodiversity Thresholds.

**Fire Season Information**

**Wildfires**  
 The critical wildfire season in the broad locality of the reserves is likely to occur:  
 • after a prolonged period of above average rainfall, leading to prolific grass growth; and  
 • during the period November to January when there is a higher incidence of lightning.  
 The reserves are considered to pose a low risk of bushfire hazard.

**Prescribed Burning**  
 Prescribed burning is not proposed for the Brigalow Park reserves because of its low flammability, and LOW Overall Fuel Hazard.

**Operational Guidelines**

General	Guidelines
<b>Aerial operations</b>	<ul style="list-style-type: none"> <li>Aerial operations will be managed by trained and competent personnel.</li> <li>The use of bombing aircraft should be with ground based suppression crews, in most situations.</li> <li>All aerial ignition operations require the consent of a NPWS Senior Officer or the Section 44 Appointee.</li> </ul>
<b>Backburning</b>	<ul style="list-style-type: none"> <li>All personnel must be fully briefed before back burning operations begin.</li> </ul>
<b>Command &amp; Control</b>	<ul style="list-style-type: none"> <li>The first combatant agency on site may assume control of the fire, but then must ensure the relevant land management agency is notified promptly.</li> <li>On the arrival of other combatant agencies, the initial Incident Controller will consult with regard to the ongoing command, control and incident management team requirements as per the relevant BFMC Plan of Operations.</li> </ul>
<b>Containment Lines</b>	<ul style="list-style-type: none"> <li>New containment lines require the prior consent of a senior NPWS officer.</li> <li>Mechanical construction of new containment lines should be avoided.</li> <li>Use of ground crews with blowers will be the quickest method of line construction, in most situations.</li> <li>All personnel involved in containment line construction should be briefed on, and must consider both natural and cultural heritage sites in the location.</li> <li>All containment lines not required for other purposes should be closed immediately at the cessation of the incident.</li> </ul>
<b>Earthmoving Equipment</b>	<ul style="list-style-type: none"> <li>Plant may only be used with the prior consent of a senior NPWS Officer.</li> <li>Graders may be used to "sweep" existing fire trails.</li> <li>Heavy machinery are excluded from all areas, other than existing fire trails.</li> <li>Light plant, such as Bobcats and Positraks may be used to support ground crews in open areas - see notes in Suppression Guidelines.</li> <li>Plant must be washed down, where practicable, prior to entering NPWS estate and again on exiting NPWS estate.</li> </ul>
<b>Fire Suppression Chemicals</b>	<ul style="list-style-type: none"> <li>The use of foam, gels and retardants will NOT be permitted within 50 metres of dams and gullies holding water.</li> <li>The aerial application use foam, gels and retardants requires the approval of a NPWS Senior Officer</li> <li>Where practicable, containment lines should be stabilised and rehabilitated as part of the wildfire suppression operation.</li> </ul>
<b>Rehabilitation</b>	<ul style="list-style-type: none"> <li>Consider deployment of a bulk water carrier to support fire operations.</li> </ul>
<b>Watering points</b>	<ul style="list-style-type: none"> <li>Potential smoke impacts and mitigation tactics will be assessed during the planning of fire operations.</li> </ul>
<b>Smoke Management</b>	<ul style="list-style-type: none"> <li>This reserve is closed to visitors.</li> </ul>
<b>Visitor Management</b>	<ul style="list-style-type: none"> <li>Black soil plains - High risk of bogging after rain events.</li> <li>Gullies, melonholes and cracking soils - This significantly reduces vehicle speeds. There is a risk of trips and falls for ground crews.</li> <li>Gullies under closed forest are &gt;1 metre deep.</li> </ul>

**Operational Guidelines - Heritage**

Resource	Guidelines
<b>Aboriginal Cultural Heritage Site Management</b>	No Aboriginal sites have been recorded in these reserves
<b>Threatened Flora and Fauna Management</b>	<ul style="list-style-type: none"> <li>Endangered ecological communities - Brigalow Forests and woodlands</li> <li>Vulnerable plant species Spiny Peppergrass (<i>Lepidium aschersonii</i>)</li> <li>Habitat of Black-striped Wallaby (<i>Macropus dorsalis</i>)</li> <li>Construction of control lines with heavy plant not permitted</li> </ul>

**Vegetation management**

Community	Vegetation management guidelines	Fire Behaviour
Brigalow / Belah forests & woodlands	<ul style="list-style-type: none"> <li>An interval between fire events less than 20 years should be avoided.</li> <li>No maximum interval is applied.</li> </ul>	<ul style="list-style-type: none"> <li>Potential rates of spread would be low due to LOW OFH</li> </ul>

OFH - Overall fuel hazard - A rating system that measures leaf litter, grasses, shrubs, bark type and bark condition. Consists of ratings for surface fuel, near-surface fuel, elevated fuel and bark.

**Suppression Strategies**

The Brigalow Park reserves are small conservation reserves. Their values would be seriously damaged with the construction of wide containment lines with earth-moving machinery. Brigalow forests & woodlands have a low potential fire behaviour, and direct or parallel attack has a high probability of success.

Conditions & forecast	Guidelines
LOW - SEVERE FDI	<ul style="list-style-type: none"> <li>Direct or parallel attack by ground crews.</li> <li>Ground crews equipped with blowers will be effective in the quick preparation of containment lines.</li> <li>Light machinery must not be used in closed Brigalow forests due to the lack of manoeuvrability from both deep gullies and vegetation.</li> </ul>
EXTREME - CATASTOPHIC FDI	<ul style="list-style-type: none"> <li>A broad containment strategy using existing tracks, low fuel areas and open areas.</li> <li>Close containment with ground crews may be considered only after the assessment of fire behaviour.</li> </ul>