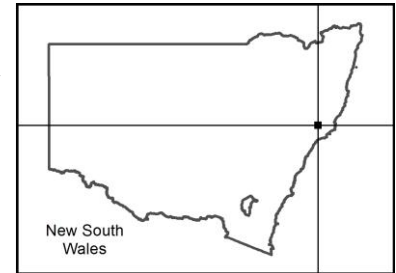


Statement of Management Intent



Black Bulga State Conservation Area

1. Introduction

This statement outlines the main values, issues, management directions and priorities of the National Parks and Wildlife Service (NPWS) for managing Black Bulga State Conservation Area (SCA). This statement, together with relevant NPWS policies, will guide the management of the SCA until a plan of management has been prepared in accordance with the [National Parks and Wildlife Act 1974 \(NPW Act\)](#). The NPWS [Managing Parks Prior to Plan of Management Policy](#) states that parks and reserves without a plan of management are to be managed in a manner consistent with the intent of the NPW Act and the ['precautionary principle' \(see Principle 15\)](#).

2. Management principles

State conservation areas are reserved under the NPW Act to protect and conserve areas that:

- contain significant or representative ecosystems, landforms or natural phenomena or places of cultural significance
- are capable of providing opportunities for sustainable visitor or tourist use and enjoyment, the sustainable use of buildings and structures, or research
- are capable of providing opportunities for uses permitted under other provisions of the NPW Act.

Under the NPW Act ([section 30G](#)), state conservation areas are managed to:

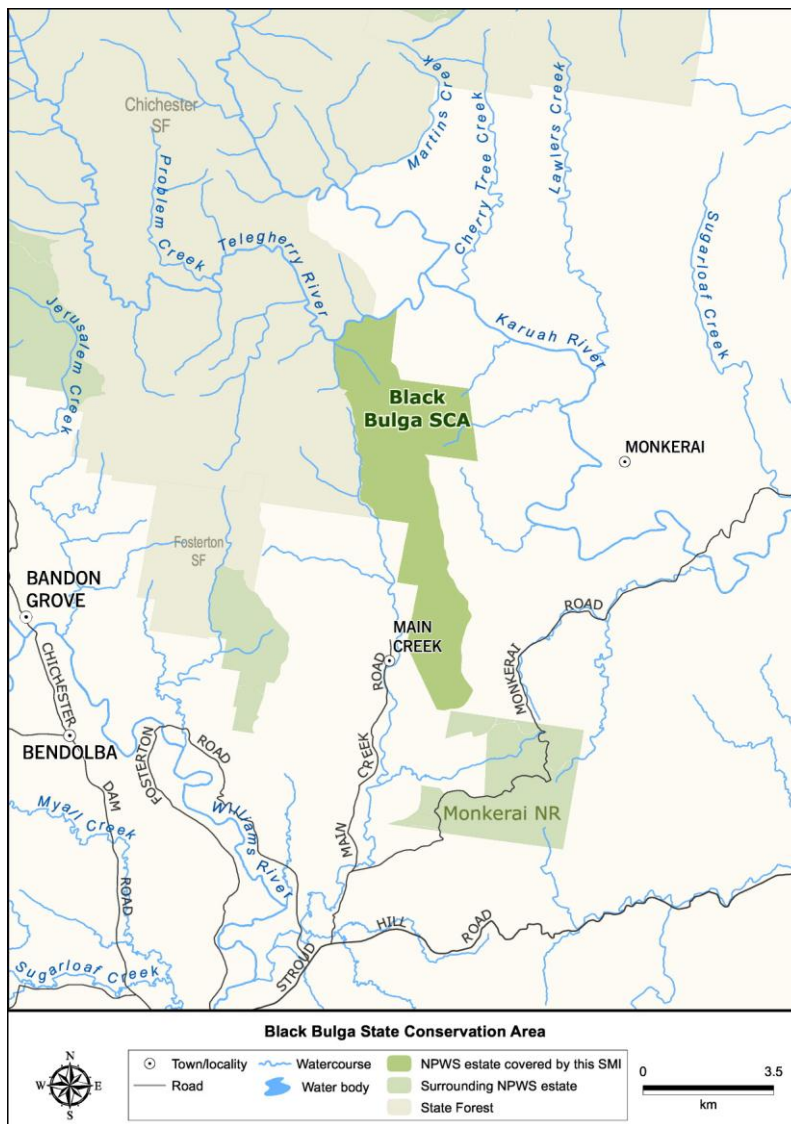
- conserve biodiversity, maintain ecosystem functions, protect natural phenomena and maintain natural landscapes
- conserve places, objects and features of cultural value
- provide for the undertaking of uses permitted under other provisions of the NPW Act (including uses permitted under section 47J such as mineral exploration and mining), having regard to the conservation of the natural and cultural values of the state conservation area
- provide for sustainable visitor or tourist use and enjoyment that is compatible with conservation of the area's natural and cultural values and with uses permitted in the area
- provide for sustainable use (including adaptive reuse) of any buildings or structures or modified natural areas having regard to conservation of the area's natural and cultural values and with other uses permitted in the area
- provide for appropriate research and monitoring.

Land is reserved as a state conservation area primarily where mineral values preclude reservation as another category. The NPW Act requires a review of the classification of state conservation areas every five years in consultation with the Minister administering the *Mining Act 1992*.

3. Context

Reservation details: Black Bulga SCA was reserved on 1 July 2003.

Size: 1554 hectares.



Black Bulga SCA is located approximately 15 kilometres north-east of Dungog. It falls within the NSW North Coast Bioregion and within the administrative areas of Dungog Shire and Great Lakes councils, Karuah Local Aboriginal Land Council and Hunter Local Land Services. The SCA is located within the traditional country of the Worimi People.

Black Bulga SCA was established as a result of the Comprehensive Regional Assessment process undertaken for the North East Regional Forest Agreement. It comprises the former Trevor State Forest and sections of Chichester State Forest. Black Bulga SCA adjoins Chichester State Forest to form a vegetation corridor between Monkerai Nature Reserve to the south and the larger Barrington Tops National Park located to the north-west. The Meroo Monkerai wildlife refuge forms the north-east boundary and Carrawirry wildlife refuge adjoins the central west section of Black

Bulga SCA. Private land surrounding Black Bulga SCA has been extensively cleared of its original vegetation for agricultural and other development. Black Bulga SCA is located downstream of Telegherry River and its tributaries and west of the Karuah River, which extends 20 kilometres to the coastline around Port Stephens.

4. Values

- Black Bulga SCA protects habitat for the endangered stuttering frog (*Mixophyes balbus*) and vulnerable koala (*Phascolarctos cinereus*) and golden-tipped bat (*Kerivoula papuensis*).
- Black Bulga SCA features wet sclerophyll forests of shrubby and shrub/grass subformations and dry sclerophyll forest along ridgelines. It also protects important habitat for subtropical rainforest and the endangered rainforest cassia (*Senna acclinis*).

5. Issues

- A number of pest animals may occur in the reserve including wild dogs (*Canis lupus* spp.), European foxes (*Vulpes vulpes*) and feral cats (*Felis catus*).
- There are also a number of weed species occurring in the reserve including lantana (*Lantana camara*), crofton weed (*Ageratina adenophora*), mistflower (*Ageratina riparia*), pasture grasses, giant rat's tail grass (*Sporobolus pyramidalis*) and isolated populations of blackberry (*Rubus fruticosus* agg.).
- Trevor Tops Road is used to access a number of neighbouring properties.

6. Key management directions

- Fire is managed in accordance with the Barrington Tops National Park [Fire Management Strategy](#).
- Pest management programs will be implemented in accordance with the [NPWS Regional Pest Management Strategy](#): Lower North Coast Region.
- Access and the road and trail network will be maintained in accordance with the reserve fire management strategy.
- All management activities will be preceded by the preparation of an environmental assessment or heritage assessment where this is a requirement of NPWS policy or legislation.
- Environmental repair and threat management programs, such as erosion mitigation measures, pest management, and activities arising from threatened species requirements may be implemented in accordance with NPWS policies and procedures.
- Non-intrusive works may be undertaken where necessary to protect cultural heritage items from further deterioration, to ensure the safety of visitors, to protect wildlife or to prevent damage to park assets.
- A plan of management will be prepared to set out the ongoing management objectives for the SCA. The plan of management is a statutory document under the NPW Act which will be available for public comment. NPWS will also encourage the community to contribute to the ongoing conservation of the SCA by promoting and raising public awareness of its special values.

For additional information or enquiries about any aspect of this SCA or this statement, contact the NPWS Gloucester Office on 02 6538 5300 or 59 Church Street, Gloucester or PO Box 236, Gloucester NSW 2422.

Disclaimer: This is a statement of intent to guide the management of the SCA prior to the development of a plan of management. Any statements made in this publication are made in good faith and do not render the Office of Environment and Heritage liable for any loss or damage. Provisions in the final plan of management may vary from those identified in this document as a result of new information and community consultation. The maps in this statement are intended to show the SCA's location and basic features only, and are not suitable for use when navigating to or exploring within parks.

Published by:

Office of Environment and Heritage
59 Goulburn Street, Sydney NSW 2000
PO Box A290, Sydney South NSW 1232
Phone: (02) 9995 5000

ISBN 978 1 74359 433 9
OEH 2014/0121
May 2014