

Biodiversity credits catalogue

Credits for sale and landholder stewardship stories

March 2024 Issue 3



Acknowledgement of Country

The Department of Climate Change, Energy, the Environment and Water acknowledges the Traditional Custodians of the lands where we work and live. We celebrate the diversity of Aboriginal peoples and their ongoing cultures and connections to the lands and waters of New South Wales.

We pay our respects to Elders past and present.

This resource may contain images, or names of deceased persons in photographs or historical content.



Welcome to the *Biodiversity credits catalogue*

When you buy biodiversity credits, you help protect and conserve our unique wildlife, ecosystems and biodiversity, whether you're a developer, an infrastructure provider or a philanthropist.

By buying credits, you enable private landholders to look after parts of their land that have wildlife significance. Landholders improve the condition of habitat on which wildlife depends using approved management actions, including managing weeds and feral pests, revegetation and conserving trees with hollows for animals to live in.

In this catalogue, we showcase for the first time the important contribution these sites are making to conservation in New South Wales and the variety of ecosystems and species that are being conserved.

The catalogue provides you with an easy way to find credits that are available for sale (beyond the public registers and the biodiversity stewardship agreements map), and makes information about the NSW biodiversity market more accessible. For the first time, buyers and sellers can find each other directly. This complements the Supply Fund to help credit buyers and sellers participate in the market.

Once you've read the catalogue's introductory pages, flip through to see the types of credits that are available. You can use the details provided to make direct contact with credit owners who have credits to sell.

Your purchase of biodiversity credits will help to strengthen our efforts to improve conservation in New South Wales.



Contents

| | |
|--|-----|
| How to use the catalogue | 4 |
| Contacting credit owners | 5 |
| Find the right credits – other places to look | 5 |
| Buying credits for philanthropic or corporate social responsibility goals | 6 |
| Information for credit owners | 7 |
| Landholder stories | 8 |
| A source of income that benefits the environment | 9 |
| A unique site with high biodiversity values | 10 |
| Making environmental protection part of the business | 11 |
| A sustainable choice for the environment and the family | 12 |
| Case study: Heatherbrae | 13 |
| Species credits | 14 |
| Index Species credits | 65 |
| Ecosystem credits | 67 |
| Index Ecosystem credits | 159 |
| Biodiversity Credits Supply Fund | 164 |

How to use the catalogue

This catalogue outlines credits for sale, put forward by credit owners.

The catalogue is organised in 2 parts: **species credits** and **ecosystem credits**, both of which alphabetically list credits by **IBRA subregion**. IBRA – the Interim Biogeographic Regionalisation for Australia – is endorsed by all levels of government as a key tool for identifying land for conservation.

The **number of available credits** is shown on each listing, including whether they are credits generated under the current Biodiversity Assessment Method (**BAM**) or the previous BioBanking Assessment Method (**BBAM**). For ecosystem credits, each listing indicates whether **or** not a particular credit has hollow-bearing trees (HBT).

If you are interested in a particular credit type but need more information, you can contact the credit owner or representative directly.

Converting Plant Community Types to Offset Trading Groups

Offset Trading Groups (**OTGs**) are groups of Plant Community Types (**PCTs**) with the same vegetation class and threat status. Under the like-for-like rules, offsets for impacts to non-threatened vegetation may be met with one or more OTGs that have the same vegetation class and the same or higher threat status.

If you want to find out which OTG a particular PCT belongs to, you can search for the OTG using the [OTG look-up tool](#).

Where possible, a PCT that is a threatened ecological community (**TEC**) has been identified in the catalogue by adding (TEC) at the end of the OTG information.



Contacting credit owners

Once you have found the credits you want to buy – or if you need more information before purchasing – you can contact the credit owner directly.

Things to consider when contacting a credit owner

- Call within reasonable hours (9 am – 5 pm), unless otherwise agreed upon in an email.
- Respect a credit owner’s right to choose who they sell their credits to.
- Always communicate in a respectful and professional manner.
- As much as possible, keep records of all your communication with the credit owner.

Not all listed contacts are credit owners

Please note, not all contacts listed in the catalogue are credit owners. Some credit owners have representatives or agencies managing their credits on their behalf.

Find the right credits – other places to look

If you don’t see the credits you need in this edition of the *Biodiversity credits catalogue*, you can also seek credits through a Credit Demand Expression of Interest.

Submitting a Credit Demand Expression of Interest (EOI) ensures that the Credits Supply Taskforce prioritises Stewardship Support Program applications from landholders to generate the credits you need. The taskforce will then work proactively with landholders to create new in-demand credits through biodiversity stewardship agreements.

Submit a Credit Demand EOI.

You will also be contacted to see if you would like to buy credits through the Biodiversity Credits Supply Fund. The supply fund runs reverse auctions every few months to buy and then sell credits.

You can also consider a Credit Purchase Agreement with the taskforce, which provides priority access to credits through the supply fund. We will also provide a supply analysis to show you where your credits can be found.

You can also use the public demand register.



Buying credits for philanthropic or corporate social responsibility goals

Purchasing biodiversity credits is a reliable way to meet your organisation's commitment to protecting the environment and native species.

Species credits improve habitat on sites where the species is known to occur. Ecosystem credits protect and enhance native plant communities that provide habitat for a range of native plants and animals.

Each biodiversity stewardship agreement (BSA) site is protected by an agreement registered on the land title to manage the site, including a management plan to address the threats that cause biodiversity decline. These include predation by feral pests, weeds, rubbish dumping and other disturbances.

Buying credits sets up long-term payments to the landholder through the Biodiversity Stewardship Payments Fund managed by the Biodiversity Conservation Trust (BCT) to ensure biodiversity gain occurs. The BCT also undertakes annual compliance checks and ecological monitoring.

The *Biodiversity credits catalogue* provides organisations with information on how to source available credits and purchase directly from credit owners. The credits advertised here are promoted with the permission of the credit owners.

The Credits Supply Fund provides another way to purchase credits. For more information, see the 'Credits Supply Fund' section of this catalogue.



Information for credit owners

How to advertise your available credits in the catalogue

Use the existing listings as a guide and email the information, contact details and photos for your listing to:
Stewardship@environment.nsw.gov.au

If you would like to provide a case study or story about your BSA site, please include this in your email. We will contact you to organise an interview time.

How often the catalogue is released

A new edition of the catalogue is proposed for release every few months. This will include existing listings unless you tell us that your credits are sold.

The catalogue will be circulated to key stakeholder groups and credit buyers working with the taskforce. In future, it will also be published on the taskforce website.

How to remove or update your listing

If you want your listing removed after selling your credits, or you need to update your contact or credit information, please notify us at Stewardship@environment.nsw.gov.au

Landholder stories

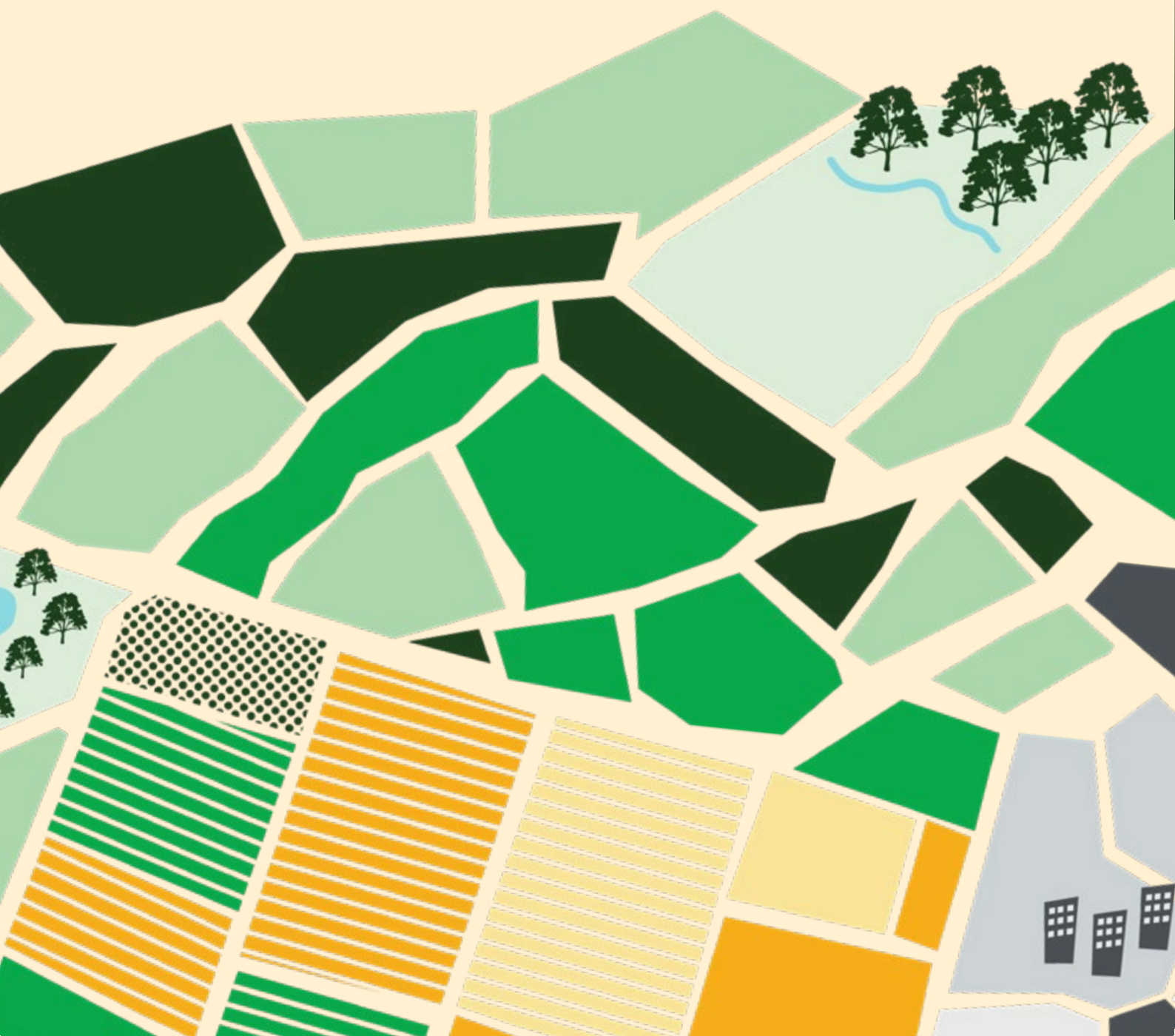




Photo: Landholder supplied.

A source of income that benefits the environment

A landholder story

The Myall Downs biodiversity stewardship site is located about 1.5 hours southwest of Byron Bay and inland of Evans Head Beach.

At around 566 hectares, Myall Downs is home to 5 plant community types, 3 of which are threatened ecological communities. These ecosystems provide habitat for at least 3 types of threatened animal species, including squirrel gliders, southern myotis and green-thighed frogs.

The property and the stewardship site have old growth forests, which have been untouched by people for 50 to 100 years. Some of the tree-dense areas are more than 270 years old. There are also crystal-clear freshwater lagoons.

While establishing the biodiversity stewardship agreement took several years, the landholder has been very pleased with the increase in biodiversity values at the site due to animal species population growth.

‘It’s a beautiful, peaceful wilderness area, so close to the coast and a haven for wildlife and humans alike. By selling the credits, we are able to earn an income, protect the endangered environment and species and keep the property in the family for future generations.’

The management plan includes managing fire risk to reduce impacts on the old growth forest and controlling lantana.

Available credits from Myall Downs are advertised on [page 20](#) and [page 75](#).

‘By selling the credits, we are able to earn an income, protect the endangered environment and species and keep the property in the family for future generations.’

- **Myall Downs landholder**

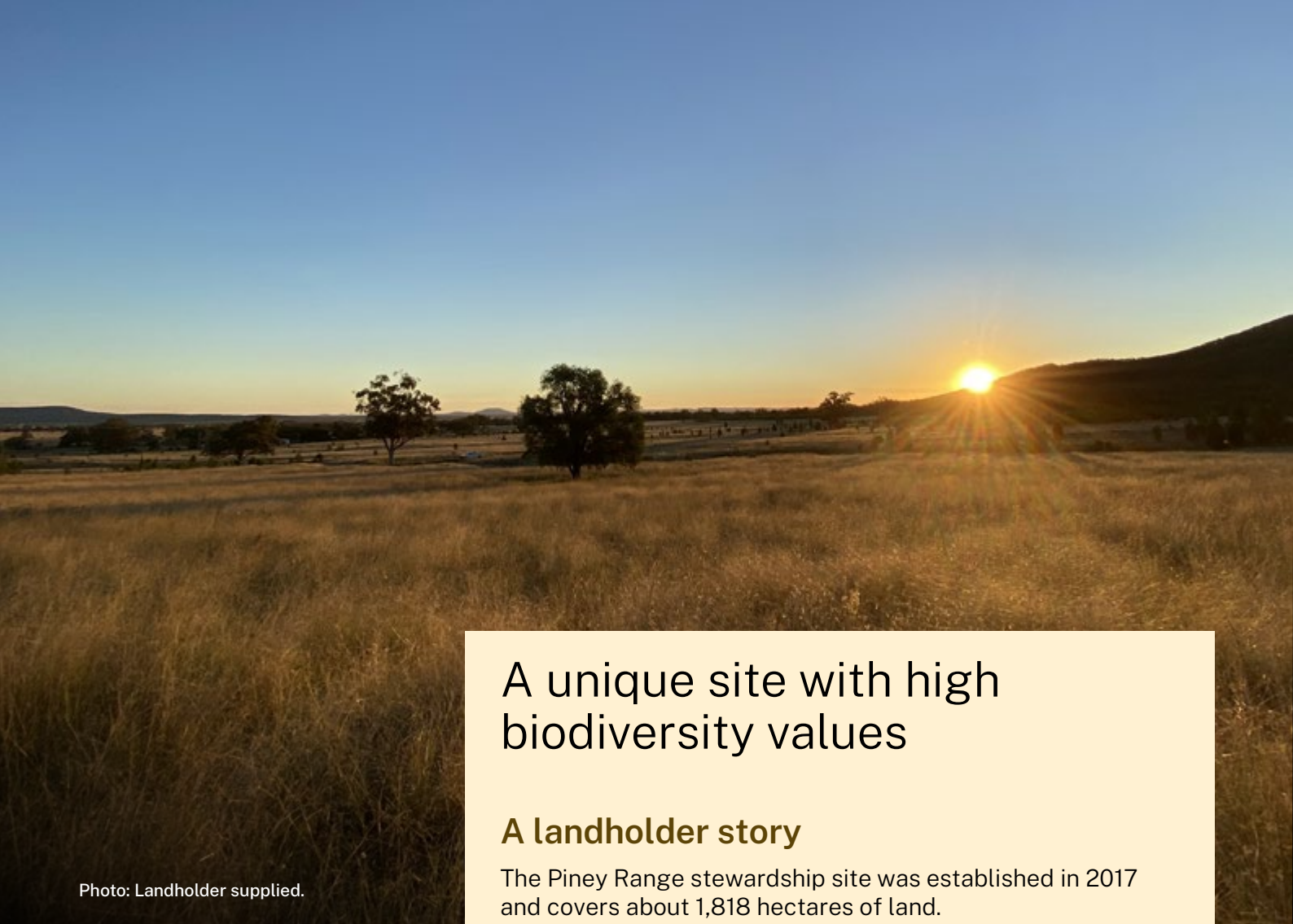


Photo: Landholder supplied.

A unique site with high biodiversity values

A landholder story

The Piney Range stewardship site was established in 2017 and covers about 1,818 hectares of land.

Located northeast of Gunnedah, the site is close to an established agricultural landscape, but it supports large tracts of intact native vegetation which contribute to the local network of conserved habitat.

The site consists of mainly forest and woodland vegetation, with areas of derived grassland and open forest. Even on areas of cleared land that didn't qualify for inclusion in the stewardship agreement vegetation is regenerating.

The landholder is very passionate about the site and the protection it gives to one threatened ecological community and habitat for at least 5 threatened species, including koalas, squirrel gliders, 2 threatened bat species and *Tylophora linearis*.

'I am a conservationist at heart. I love the wilderness, I love intact nature, and I love the Australian bush, with all its biodiversity and uniqueness. By establishing my property as a biodiversity stewardship site, I am assured of permanent protection of it and all of its unique flora and fauna, just as I have always intended.'

The site also has 3 watercourses, which provide a permanent water source and refuge for native wildlife.

Available credits from Piney Range are advertised on [page 141](#) and [page 142](#).

'I love its uniqueness... It is rugged country that doesn't have a high agricultural value, but it does have a high biodiversity value.'

- Piney Range landholder



Photo: Landholder supplied.

Making environmental protection part of the business

A landholder story

Everleigh is located in Tooraweenah, approximately 33 kilometres southwest of Coonabarabran. The scenic biodiversity stewardship site was established in 2021.

As a result of having in-demand credits, the landholder was able to sell sufficient credits to meet the Total Fund Deposit and the site is now in active management. There are still over 500 credits available for the Offset Trading Group and Threatened Ecological Community: White Box – Yellow Box – Blakely’s Redgum Woodland.

The landholders were introduced to biodiversity stewardship through their work in the resources industry and saw it as an opportunity to diversify home farm life with good environmental outcomes.

‘I saw it as a unique opportunity to move towards the future and protect sensitive parts of the land, so our farm enterprises now include livestock and environmental protection.’

Located within the Warrumbungle Slopes and Goonoo Slopes Mitchell Landscape this beautiful site is now protected in perpetuity and, with the environmental and financial outcomes they are already seeing, the landholders are looking at introducing this enterprise to their new property too.

‘We look forward to learning more about the wonderful biodiversity on this land.’

Available credits from Everleigh are advertised on [page 144](#).

‘I saw it as a unique opportunity to move towards the future and protect environmentally sensitive parts of my farm...’

- **Everleigh landholder**



Photo: Landholder supplied.

A sustainable choice for the environment and the family

A landholder story

Set in the Sydney Basin, approximately 15 kilometres southwest of Camden and located near the township of The Oaks, the lush Craigend biodiversity stewardship site is part of a larger property used for grazing livestock.

The property, which has been in the landholder's family for 5 generations, has areas of remnant bushland with the bulk of the bushland occurring along the beautiful Werriberri Creek.

When the landholders moved towards retirement age they stopped dairy farming and leased out their paddocks and infrastructure to a local dairy farmer. They searched for a more sustainable approach to their life on the property and aimed to restore the main house, a historic ironbark slab cottage, and farm buildings.

Two biodiversity sites now cover 72 hectares of remnant native bushland which will be preserved in perpetuity.

The first site has been in active management for a number of years now. The sale of credits from the second site, established under a biodiversity stewardship agreement, will give the family the capital to maintain the farm well into the future.

'The opportunity to turn parts of the farm into biodiversity sites has allowed us to manage the land and bush the way we've always wanted.'

Available credits from Craigend are advertised on [page 16](#) and [page 69](#).

'The opportunity to turn parts of the farm into biodiversity sites has allowed us to manage the land and bush the way we've always wanted.'

- Craigend landholder

Case study: Heatherbrae

The Heatherbrae biodiversity stewardship agreement (BSA) was executed in May 2018 and is part of the Hunter Region Botanic Gardens (Botanic Gardens). The Botanic Gardens is run entirely by volunteers and has operated under Hunter Water management at Heatherbrae since 1986.

The process of applying for and establishing a BSA has allowed Hunter Water to better understand the biodiversity needs of the site and has opened up proactive conversations with the volunteers that manage the site on a day-to-day basis.

While Hunter Water's experience with having a BSA may not be the same as most landholders, it has provided the community with an opportunity to be more aware of the local species and ecosystems at risk.

Credit sales have enabled the project to move into the active management phase, with an extensive Lantana removal program commencing in late 2023. It is expected that Lantana removal will enhance habitat for koalas, by improving wildlife corridor function.

Ecological burns are planned for the site and are expected to improve floral diversity for ground layer species, such as orchids, and reduce the risk of wildfire and help protect the koala population in the Tomago Borefields.

A spokesperson for Hunter Water said, 'The NSW Biodiversity Offset Scheme will hopefully present great opportunities for landholders in the future. As the [biodiversity] credits market matures, we expect the benefits of participation in the scheme will be more predictable.'

'Participation in the scheme has helped to facilitate discussions about biodiversity conservation at all levels within our organisation including grounds maintenance staff, environmental planners, finance managers through to the Executive and the Board.'

Available credits from Heatherbrae are advertised on [page 40](#) and [page 114](#).



Species credits



Understanding species credits listings

There are key things to pay attention to when looking at listings for species credits:

List of acronyms

BAM

Biodiversity Assessment Method

BBAM

BioBanking Assessment Method

BCT

Biodiversity Conservation Trust

BOS

Biodiversity Offsets Scheme

BSA

Biodiversity Stewardship Agreement

CSF

Credits Supply Fund

CST

Credits Supply Taskforce

HBT

Hollow-bearing trees

IBRA

Interim Biogeographic Regionalisation for Australia

OTG

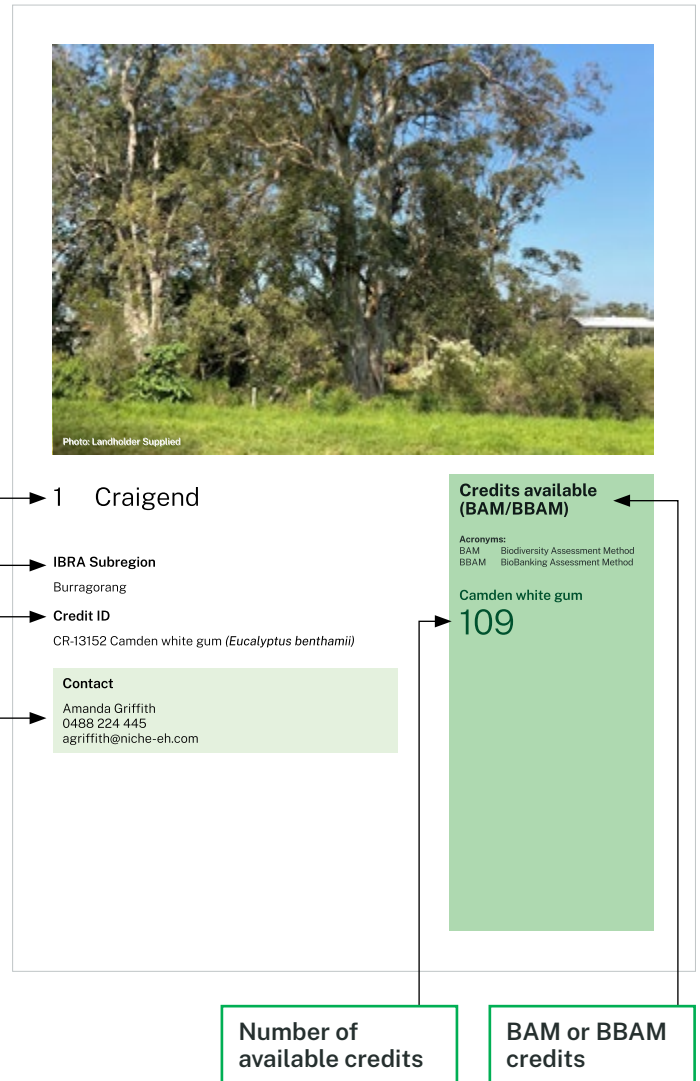
Offset Trading Group

PCT

Plant Community Type

TEC

Threatened ecological community





Camden white gum (landholder supplied)

1 Craigend

IBRA subregion

Burraborang

Aboriginal Country

Gundungurra

Credit ID

CR-13152 Camden white gum (*Eucalyptus benthamii*)

Contact

Amanda Griffith
0488 224 445
agriffith@niche-eh.com

Credits available (BBAM)

Acronyms:

BAM Biodiversity Assessment Method
BBAM BioBanking Assessment Method

Camden white gum

109



Creeping Tick-trefoil (Lachlan Copeland/DCCEEW)

2 Kanowna

IBRA subregion

Castlereagh-Barwon

Aboriginal Country

Wiradjuri

Credit ID

CR-22876 Creeping Tick-trefoil (*Desmodium campylocaulon*)

Contact

Bradley Tucker
0402 269 439
brad@tuckerenviron.com.au

Credits available (BAM)

Acronyms:

BAM Biodiversity Assessment Method
BBAM BioBanking Assessment Method

Creeping Tick-trefoil

6



Bailey's indigo (Gavin Phillips/DCCEEW)

3 Ermelo

IBRA subregion

Clarence Lowlands

Aboriginal Country

Bundjalung

Credit ID

CR-804 Bailey's indigo (*Indigofera baileyi*)

CR-894 Brush-tailed phascogale (*Phascogale tapoatafa*)

CR-807 Koala (*Phascolarctos cinereus*)

CR-803 Slaty red gum (*Eucalyptus glaucina*)

CR-802 Water nutgrass (*Cyperus aquatilis*)

Contact

Greg Steenbeeke
0402 068 489
henribark@outlook.com.au

Credits available (BAM)

Acronyms:

BAM Biodiversity Assessment Method
BBAM BioBanking Assessment Method

Bailey's indigo

1125

Brush-tailed phascogale

1048

Koala

1013

Slaty red gum

710

Water nutgrass

160



Rotala tripartita (Lachlan Copeland/DCCEEW)

4 Ermelo

IBRA subregion

Clarence Lowlands

Aboriginal Country

Bundjalung

Credit ID

CR-18923 Slaty red gum (*Eucalyptus glaucina*)

CR-18927 Red-backed button-quail (*Turnix maculosus*)

CR-18926 *Rotala tripartita*

CR-18924 Tall knotweed (*Persicaria elatior*)

Contact

Greg Steenbeeke
0402 068 489
henribark@outlook.com.au

Credits available (BAM)

Acronyms:

BAM Biodiversity Assessment Method
BBAM BioBanking Assessment Method

Slaty red gum

703

Red-backed button-quail

339

Rotala tripartita

47

Tall knotweed

38



Green-thighed frog (Lachlan Copeland/DCCEEW)

5 Myall Downs

IBRA subregion

Clarence Lowlands

Aboriginal Country

Bundjalung

Credit ID

CR-12412 Green-thighed frog (*Litoria brevipalmata*)

Credits available (BAM)

Acronyms:

BAM Biodiversity Assessment Method
BBAM BioBanking Assessment Method

Green-thighed frog

91

Contact

Amanda Griffith
0488 224 445
agriffith@niche-eh.com



Coastal emu (Nicola Brookhouse/DCCEEW)

6 Pillar Valley

IBRA subregion

Clarence Sandstones

Aboriginal Country

Gumbainggir

Credit ID

CR-7885 Coastal emu (*Dromaius novaehollandiae*)

Contact

Diane Sommer
0439 012 379
disommer@hotmail.com

Credits available (BAM)

Acronyms:

BAM Biodiversity Assessment Method
BBAM BioBanking Assessment Method

Coastal emu

382



Emu (John Spencer/DCCEEW)

7 Tyndale

IBRA subregion

Clarence Sandstones

Aboriginal Country

Bundjalung

Credit ID

CR-5811 Emu (*Dromaius novaehollandiae*)

CR-5813 Squirrel glider (*Petaurus norfolcensis*)

CR-5814 Common planigale (*Planigale maculata*)

CR-5812 *Maundia triglochinos*

Contact

Amanda Griffith
0488 224 445
agriffith@niche-eh.com

Credits available (BAM)

Acronyms:

BAM Biodiversity Assessment Method
BBAM BioBanking Assessment Method

Emu

817

Squirrel glider

630

Common planigale

170

Maundia triglochinos

1



Eastern osprey (Wayne Reynolds/DCCEEW)

8 Emerald Beach

IBRA subregion

Coffs Coast and Escarpment

Aboriginal Country

Gumbainggir

Credit ID

CR-746 Eastern osprey (*Pandion cristatus*)

CR-747 Common planigale (*Planigale maculata*)

CR-745 Wallum froglet (*Crinia tinnula*)

Contact

Daniel Williams
0427 660 581
regenr8biosol@gmail.com

Credits available (BAM)

Acronyms:

BAM Biodiversity Assessment Method
BBAM BioBanking Assessment Method

Eastern osprey

202

Common planigale

202

Wallum froglet

193



Moonee quassia (Lachlan Copeland/DCCEEW)

9 Moonee Beach

IBRA subregion

Coffs Coast and Escarpment

Aboriginal Country

Gumbainggir

Credit ID

Available on request

Contact

Jinderpal Singh Rai
0413 100 549 or (02) 6654 2357
jaaprai@gmail.com

Credits available (BAM)

Acronyms:

BAM Biodiversity Assessment Method
BBAM BioBanking Assessment Method

Moonee quassia
(*Quassia* sp. *Moonee Creek*)

4947

Rusty plum
(*Niemeyera whitei*)

2249

Koala
(*Phascolarctos cinereus*)

67



Dillwynia tenuifolia (Barry Collier/DCCEEW)

10 Rickards Road

IBRA subregion

Cumberland

Aboriginal Country

Dharug

Credit ID

CR-684 *Dillwynia tenuifolia*

CR-686 Juniper-leaved grevillea (*Grevillea juniperina* subsp. *juniperina*)

CR-685 *Micromyrtus minutiflora*

Credits available (BBAM)

Acronyms:

BAM Biodiversity Assessment Method
BBAM BioBanking Assessment Method

Dillwynia tenuifolia

50,090

Juniper-leaved grevillea

34,265

Micromyrtus minutiflora

1,008

Contact

Eddy Hawach
0420 511 727
eddy.h@envirowaste.com.au



Cumberland Plain land snail (Lachlan Copeland/DCCEEW)

11 Sunnyside 1

IBRA subregion

Cumberland

Aboriginal Country

Dharug

Credit ID

Available on request

Contact

Michael Spork
0408 776 759
michael.spork@biocreditsaus.com

Credits available (BAM)

Acronyms:

BAM Biodiversity Assessment Method
BBAM BioBanking Assessment Method

Cumberland Plain land snail (*Meridolum corneovirens*)

26



Cumberland Plain land snail (Lachlan Copeland/DCCEEW)

12 Sunnyside 2

IBRA subregion

Cumberland

Aboriginal Country

Dharug

Credit ID

Available on request

Contact

Michael Spork
0408 776 759
michael.spork@biocreditsaus.com

Credits available (BAM)

Acronyms:

BAM Biodiversity Assessment Method
BBAM BioBanking Assessment Method

Cumberland Plain land snail (*Meridolum corneovirens*)

245



Juniper-leaved grevillea (Barry Collier/DCCEEW)

13 Twin Creeks Golf Club

IBRA subregion

Cumberland

Aboriginal Country

Dharug

Credit ID

CR-26251 *Dillwynia tenuifolia*

CR-26250 Juniper-leaved grevillea (*Grevillea juniperina* subsp. *juniperina*)

Credits available (BBAM)

Acronyms:

BAM Biodiversity Assessment Method
BBAM BioBanking Assessment Method

Dillwynia tenuifolia

110,688

Juniper-leaved grevillea

56,573

Contact

Twin Creeks Holdings Ltd, TCG Developments
0474 888 000
alecon@bigpond.com



Koala (Harrison Ritchie/DCCEEW)

14 Bornhardtia

IBRA subregion

Eastern Nandewars

Aboriginal Country

Kamilaroi

Credit ID

CR-26251 Koala (*Phascolarctos cinereus*)

CR-26250 Regent honeyeater (*Anthochaera phrygia*)

Credits available (BBAM)

Acronyms:

BAM Biodiversity Assessment Method
BBAM BioBanking Assessment Method

Koala

2254

Regent honeyeater

2113

Contact

Thesium Biocredits
0402 068 489 or 0474 888 000
credits@thesium.com.au



Border thick-tailed gecko (Stephen Mahony/DCCEEW)

15 Rockview South

IBRA subregion

Eastern Nandewars

Aboriginal Country

Nganyaywana

Credit ID

CR-663 Border thick-tailed gecko (*Uvidicolus sphyrurus*)

CR-664 Regent honeyeater (*Anthochaera phrygia*)

CR-662 Granite homoranthus (*Homoranthus prolixus*)

Contact

Thesium Biocredits
0402 068 489 or 0474 888 000
credits@thesium.com.au

Credits available (BBAM)

Acronyms:

BAM Biodiversity Assessment Method
BBAM BioBanking Assessment Method

Border thick-tailed gecko

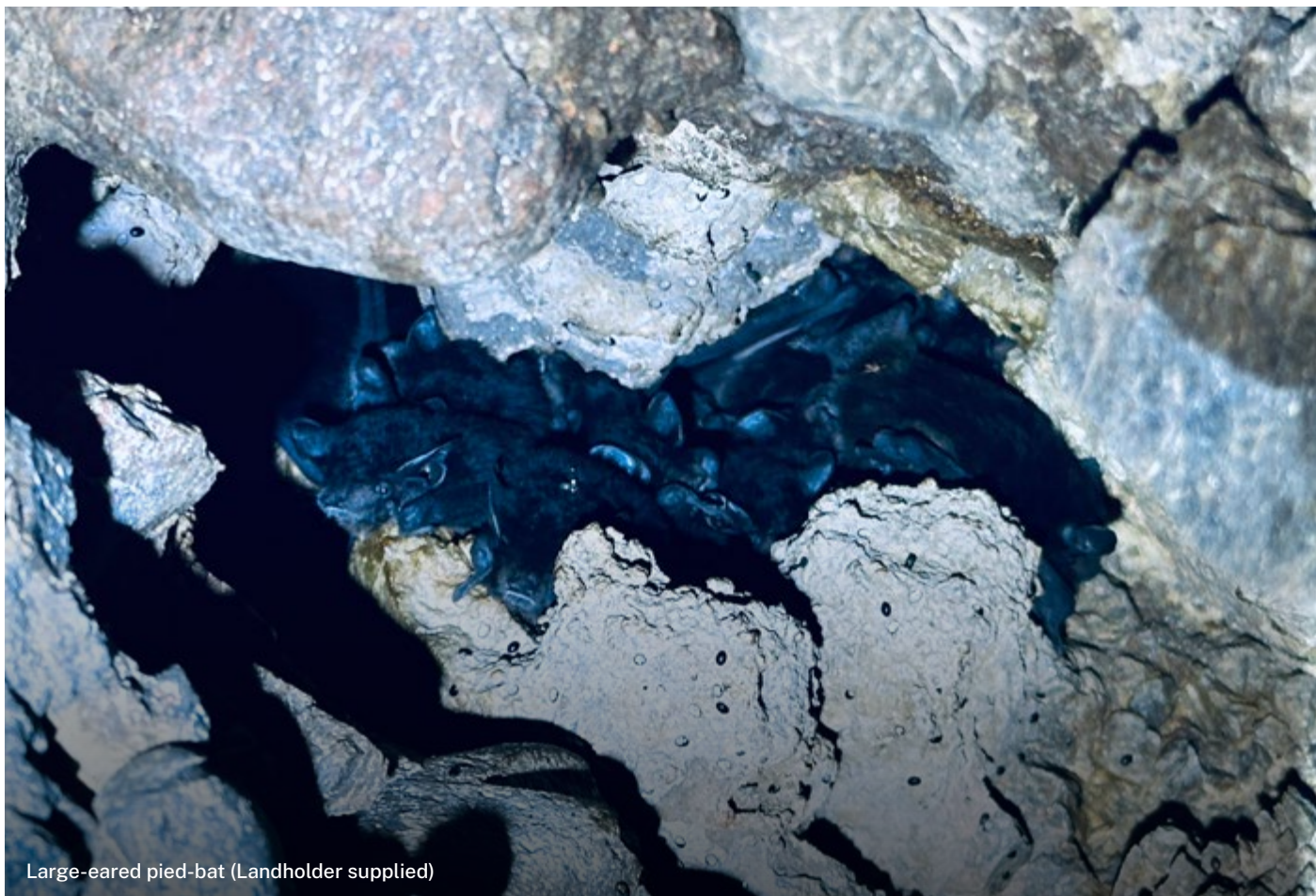
1668

Regent honeyeater

93

Granite homoranthus

39



Large-eared pied-bat (Landholder supplied)

16 Allambie

IBRA subregion

Ellerston

Aboriginal Country

Geawegal

Credit ID

Available on request

Contact

Thesium Biocredits
0402 068 489 or 0474 888 000
credits@thesium.com.au

Credits available (BAM)

Acronyms:

BAM Biodiversity Assessment Method
BBAM BioBanking Assessment Method

Koala
(*Phascolarctos cinereus*)

1019

Large-eared pied bat
(*Chalinolobus dwyeri*)

1019

Eastern cave bat
(*Vespadelus troughtoni*)

828

Squirrel glider
(*Petaurus norfolcensis*)

641



Masked owl (Lachlan Copeland/DCCEEW)

17 Allambie 2

IBRA subregion

Ellerston

Aboriginal Country

Geawegal

Credit ID

Available on request

Contact

Thesium Biocredits
0402 068 489 or 0474 888 000
credits@thesium.com.au

Credits available (BAM)

Acronyms:

BAM Biodiversity Assessment Method
BBAM BioBanking Assessment Method

Masked owl
(*Tyto novaehollandiae*)

350

Cymbidium canaliculatum

4



Harts Gully (Landholder supplied)

18 Harts Gully

IBRA subregion

Hill End

Aboriginal Country

Wiradjuri

Credit ID

Available on request

Contact

Thesium Biocredits
0402 068 489 or 0474 888 000
credits@thesium.com.au

Credits available (BAM)

Acronyms:

BAM Biodiversity Assessment Method
BBAM BioBanking Assessment Method

Capertee stringybark (*Eucalyptus cannonii*)

16,706

Koala (*Phascolarctos cinereus*)

2075

Large-eared pied bat (*Chalinolobus dwyeri*)

2075

Squirrel glider (*Petaurus norfolcensis*)

1947



White-flowered wax plant (Robert Gibson/DCCEEW)

19 Redgum Ridge

IBRA subregion

Illawarra

Aboriginal Country

Tharawal

Credit ID

Available on request

Contact

Max de Beer
0478 560 999
maxdebeer@lodgeenviro.com.au

Credits available (BBAM)

Acronyms:

BAM Biodiversity Assessment Method
BBAM BioBanking Assessment Method

White-flowered wax plant (*Cynanchum elegans*)

48



Southern greater glider (Pavel German/DCCEEW)

20 Three Hundred Acre Wood

IBRA subregion

Illawarra

Aboriginal Country

Tharawal

Credit ID

Available on request

Contact

Matt Kelly
0423 463 363
mattjkelly91@gmail.com

Credits available (BBAM)

Acronyms:

BAM Biodiversity Assessment Method
BBAM BioBanking Assessment Method

Large eared pied bat (*Chalinolobus dwyeri*)

633

Southern greater glider (*Petauroides volans*)

125



Austral toadflax (Lachlan Copeland/DCCEEW)

21 Glen Lea

IBRA subregion

Inland Slopes

Aboriginal Country

Wiradjuri

Credit ID

CR-17781 Austral toadflax (*Thesium australe*)

Contact

Amanda Griffith
0488 224 445
agriffith@niche-eh.com

Credits available (BBAM)

Acronyms:

BAM Biodiversity Assessment Method
BBAM BioBanking Assessment Method

Austral toadflax

15



Koala (Alex Pike/DCCEEW)

22 Woodside

IBRA subregion

Inland Slopes

Aboriginal Country

Wiradjuri

Credit ID

Available on request

Contact

Chris Attenborough
0419 291 042 or 0448 997 787
chris@woodsidepastoral.com.au

Credits available (BAM)

Acronyms:

BAM Biodiversity Assessment Method
BBAM BioBanking Assessment Method
TBD To be determined

Koala (Phascolarctos cinereus)

2954

*Superb parrot
(Polytelis swainsonii)*

TBD

*Squirrel glider
(Petaurus norfolcensis)*

TBD



Green and golden bell frog (Doug Beckers/DCCEEW)

23 Bawley Point

IBRA subregion

Jervis

Aboriginal Country

Tharawal

Credit ID

CR-18714 Green and golden bell frog (*Litoria aurea*)

CR-18715 Southern myotis (*Myotis macropus*)

Contact

Louis Kacir
0418 265 472
louiskacir@gmail.com

Credits available (BAM)

Acronyms:

BAM Biodiversity Assessment Method
BBAM BioBanking Assessment Method

Green and golden bell frog

148

Southern myotis

99



24 Glenhaven

IBRA subregion

Karuah Manning

Aboriginal Country

Worimi

Credit ID

CR-125 Koala (*Phascolarctos cinereus*)

Contact

Amanda Griffith
0488 224 445
agriffith@niche-eh.com

Credits available (BBAM)

Acronyms:

BAM Biodiversity Assessment Method
BBAM BioBanking Assessment Method

Koala

1950



Koala (Marie-Claire Demers/DCCEEW)

25 Heatherbrae

IBRA subregion

Karuah Manning

Aboriginal Country

Awabakal

Credit ID

CR-815 Koala (*Phascolarctos cinereus*)

Contact

Angus Seberry
0417 655 685
angus.seberry@hunterwater.com

Credits available (BAM)

Acronyms:

BAM Biodiversity Assessment Method
BBAM BioBanking Assessment Method

Koala

599



White-flowered wax plant (Barry Collier/DCCEEW)

26 Raelands

IBRA subregion

Karuah Manning

Aboriginal Country

Worimi

Credit ID

CR-10196 White-flowered wax plant (*Cynanchum elegans*)

Contact

James McRae
0431 360 945 or 0404 783 886
raelandsfarm@gmail.com

Credits available (BBAM)

Acronyms:

BAM Biodiversity Assessment Method
BBAM BioBanking Assessment Method

White-flowered wax plant

135



Koala (Landholder supplied)

27 Vision Falls

IBRA subregion

Karuah Manning

Aboriginal Country

Worimi

Credit ID

CR-6784 Giant barred frog (*Mixophyes iteratus*)

CR-6785 Koala (*Phascolarctos cinereus*)

Contact

Veronica Harris
0455 207 266
vero.harris77@gmail.com

Credits available (BAM)

Acronyms:

BAM Biodiversity Assessment Method
BBAM BioBanking Assessment Method

Giant barred frog

10,500

Koala

8200



28 Adjenbilly Creek

IBRA subregion

Kybeyan-Gourock and Monaro

Aboriginal Country

Ngarigo and Yuin

Credit ID

Available on request

Contact

Kali Reid
0431 953 968
kalitreid@gmail.com

Credits available (BAM)

Acronyms:

BAM Biodiversity Assessment Method
BBAM BioBanking Assessment Method

Hoary sunray
(*Leucochrysum albicans* var.
tricolor)

8114

Koala
(*Phascolarctos cinereus*)

726

Greater glider
(*Petauroides volans*)

148



Squirrel glider (Jeff Betteridge/DCCEEW)

29 West Kunderang

IBRA subregion

Macleay Gorges and Armidale Plateau

Aboriginal Country

Dainggatti and Nganyaywana

Credit ID

Available on request

Contact

Cynthia McRae
0429 192 810
westkunderang@bigpond.com

Credits available (BBAM)

Acronyms:

BAM Biodiversity Assessment Method
BBAM BioBanking Assessment Method

Squirrel glider (*Petaurus norfolcensis*)

10,600

Koala (*Phascolarctos cinereus*)

10,594

Brush-tailed rock wallaby (*Petrogale penicillata*)

455



Green and golden bell frog (Alex Pike/DCCEEW)

30 Belmore River

IBRA subregion

Macleay Hastings

Aboriginal Country

Dainggatti

Credit ID

CR-105 Wallum froglet (*Crinia tinnula*)

CR-106 Green and golden bell frog (*Litoria aurea*)

CR-108 Brush-tailed phascogale (*Phascogale tapoatafa*)

Contact

Amanda Griffith
0488 224 445
agriffith@niche-eh.com

Credits available (BBAM)

Acronyms:

BAM Biodiversity Assessment Method
BBAM BioBanking Assessment Method

Wallum froglet

158

Green and golden bell frog

147

Brush-tailed phascogale

130



Michelago parrot-pea (Jackie Miles/DCCEEW)

31 Burra North

IBRA subregion

Monaro

Aboriginal Country

Ngunawal and Ngarigo

Credit ID

CR-22195 Silky Swainson-pea (*Swainsona sericea*)

CR-22194 Pale pomaderris (*Pomaderris pallida*)

CR-22193 Michelago parrot-pea (*Dillwynia glauca*)

Contact

Craig Goggin
0413 034 661
craig.goggin@hotmail.com

Credits available (BAM)

Acronyms:

BAM Biodiversity Assessment Method
BBAM BioBanking Assessment Method

Silky Swainson-pea

68

Pale pomaderris

15

Michelago parrot-pea

11



Pink-tailed worm lizard (Landholder supplied)

32 Panorama

IBRA subregion

Monaro

Aboriginal Country

Ngunawal

Credit ID

CR-550 Hoary sunray (*Leucochrysum albicans* subsp. *tricolor*)

CR-549 Golden sun moth (*Synemon plana*)

CR-548 Pink-tailed worm lizard (*Aprasia parapulchella*)

CR-547 Small purple-pea (*Swainsona recta*)

Contact

Robin Pty Ltd
wandiyali.restoration@gmail.com

Credits available (BAM)

Acronyms:

BAM Biodiversity Assessment Method
BBAM BioBanking Assessment Method

Hoary sunray

414

Golden sun moth

162

Pink-tailed worm lizard

114

Small purple-pea

2



Pink-tailed worm lizard (Landholder supplied)

33 Swans

IBRA subregion

Monaro

Aboriginal Country

Ngunawal

Credit ID

CR-552 Golden sun moth (*Synemon plana*)

CR-551 Pink-tailed worm lizard (*Aprasia parapulchella*)

Credits available (BAM)

Acronyms:

BAM Biodiversity Assessment Method
BBAM BioBanking Assessment Method

Golden sun moth

188

Pink-tailed worm lizard

47

Contact

Robin Pty Ltd
wandiyali.restoration@gmail.com



Hoary sunray (Lorraine Oliver/DCCEEW)

34 Williamsdale North

IBRA subregion

Monaro

Aboriginal Country

Ngunawal and Ngarigo

Credit ID

CR-20721 Pink-tailed legless lizard (*Aprasia parapulchella*)

CR-20723 Silky Swainson-pea (*Swainsona sericea*)

CR-20722 Hoary sunray (*Leucochrysum albicans* var. *tricolor*)

Contact

Craig Goggin
0413 034 661
craig.goggin@hotmail.com

Credits available (BAM)

Acronyms:

BAM Biodiversity Assessment Method
BBAM BioBanking Assessment Method

Pink-tailed legless lizard

893

Silky Swainson-pea

841

Hoary sunray

60



Silky Swainson-pea (Landholder supplied)

35 Williamsdale South

IBRA subregion

Monaro

Aboriginal Country

Ngunawal and Ngarigo

Credit ID

CR-20825 Pink-tailed legless lizard (*Aprasia parapulchella*)

CR-20828 Silky Swainson-pea (*Swainsona sericea*)

CR-20827 Pale pomaderris (*Pomaderris pallida*)

CR-20826 Hoary sunray (*Leucochrysum albicans* var. *tricolor*)

Contact

Craig Goggin
0413 034 661
craig.goggin@hotmail.com

Credits available (BAM)

Acronyms:

BAM Biodiversity Assessment Method
BBAM BioBanking Assessment Method

Pink-tailed legless lizard

310

Silky Swainson-pea

252

Pale pomaderris

2

Hoary sunray

1



Squirrel glider (Ken Stepnell/DCCEEW)

36 Gloucester Greater Region

IBRA subregion

Mummel Escarpment

Aboriginal Country

Biripi

Credit ID

Available on request

Contact

Lisa Alexander
0421 229 195
lisa@dohertywhite.com.au

Credits available (BAM)

Acronyms:

BAM Biodiversity Assessment Method
BBAM BioBanking Assessment Method

Koala

(*Phascolarctos cinereus*)

654

Stephen's banded snake

(*Hoplocephalus stephensii*)

584



Grassland earless dragon (Lachlan Hall/DCCEEW)

37 North Poplars

IBRA subregion

Murrumbateman

Aboriginal Country

Ngambri and Ngunawal

Credit ID

CR-561 Grassland earless dragon (*Tympanocryptis pinguicotta*)

Contact

Robin Pty Ltd
wandiyali.restoration@gmail.com

Credits available (BAM)

Acronyms:

BAM Biodiversity Assessment Method
BBAM BioBanking Assessment Method

Grassland earless dragon

145



Canberra grassland earless dragon (Rod Pietsch/DCCEEW)

38 South Poplars

IBRA subregion

Murrumbateman

Aboriginal Country

Ngambri and Ngunawal

Credit ID

CR-558 Canberra grassland earless dragon (*Tympanocryptis lineata*)

CR-559 Golden sun moth (*Synemon plana*)

CR-557 Pink-tailed worm lizard (*Aprasia parapulchella*)

Credits available (BAM)

Acronyms:

BAM Biodiversity Assessment Method
BBAM BioBanking Assessment Method

Canberra grassland earless dragon

187

Golden sun moth

170

Pink-tailed worm lizard

85

Contact

Robin Pty Ltd
wandiyali.restoration@gmail.com



Slender darling pea (Landholder supplied)

39 Old Galah

IBRA subregion

Murrumbidgee

Aboriginal Country

Wiradjuri

Credit ID

CR-25590 Slender darling pea (*Swainsona murrayana*)

Credits available (BAM)

Acronyms:

BAM Biodiversity Assessment Method
BBAM BioBanking Assessment Method

Slender darling pea

1,920

Contact

George Auldish
0429 856 109
gauldist@bigpond.com



Australian brush turkey (Ann Goeth/DCCEEW)

40 Bombell Valley

IBRA subregion

Northern Basalts

Aboriginal Country

Kamilaroi

Credit ID

Available on request

Contact

Thesium Biocredits
0402 068 489 or 0474 888 000
credits@thesium.com.au

Credits available (BAM)

Acronyms:

BAM Biodiversity Assessment Method
BBAM BioBanking Assessment Method

Large-eared pied bat
(*Chalinolobus dwyeri*)

1289

Squirrel glider
(*Petaurus norfolcensis*)

955

Australian brush turkey
(*Alectura lathami*)

767

Large bent-winged bat
(*Miniopterus orianae oceanensis*)

314



Buttercup doubletail (Landholder supplied)

41 Tricketts Arch

IBRA subregion

Oberon

Aboriginal Country

Dharug

Credit ID

CR-218 Buttercup doubletail (*Diuris aequalis*)

Contact

Sharon (Ruby) Dykes
(02) 6335 5247 or 0435 564 387
trickettsarch@activ8.net.au

Credits available (BAM)

Acronyms:

BAM Biodiversity Assessment Method
BBAM BioBanking Assessment Method

Buttercup doubletail

4



Winged peppergrass (Lachlan Copeland/DCCEEW)

42 Farr Park

IBRA subregion

Pilliga Outwash

Aboriginal Country

Kamilaroi

Credit ID

CR-19478 Winged peppergrass (*Lepidium monoplocoides*)

CR-19480 *Tylophora linearis*

CR-19479 *Oldenlandia galioides*

Credits available (BAM)

Acronyms:

BAM Biodiversity Assessment Method
BBAM BioBanking Assessment Method

Winged peppergrass

9587

Tylophora linearis

2365

Oldenlandia galioides

708

Contact

Michael Spork
0408 776 759
michael@msproperties.com.au



Juniper-leaved grevillea (Barry Collier/DCCEEW)

43 Fernhill

IBRA subregion

Sydney Basin

Aboriginal Country

Dharug

Credit ID

Available on request

Contact

Daniel Williams
0427 660 581
regenbiosol@gmail.com

Credits available (BBAM & BAM)

Acronyms:

BAM Biodiversity Assessment Method
BBAM BioBanking Assessment Method

Juniper-leaved grevillea
(*Grevillea juniperina* subsp.
juniperina)

36,508

Cumberland Plain land snail
(*Meridolum corneovirens*)

250



Koala (Dan Lunney/DCCEEW)

44 Southern Highlands

IBRA subregion

Sydney Basin

Aboriginal Country

Gundungurra and Tharawal

Credit ID

Available on request

Contact

Patrick Clarke
0419 998 802
patrick.clarke@ccgaustralia.com

Credits available (BAM)

Acronyms:

BAM Biodiversity Assessment Method
BBAM BioBanking Assessment Method

Koala (*Phascolarctos cinereus*)

118



45 Jura Farm

IBRA subregion

Upper Hunter

Aboriginal Country

Wonnarua

Credit ID

CR-5752 Koala (*Phascolarctos cinereus*)

CR-18715 Brush-tailed phascogale (*Phascogale tapoatafa*)

Credits available (BAM)

Acronyms:

BAM Biodiversity Assessment Method
BBAM BioBanking Assessment Method

Koala

3225

Brush-tailed phascogale

2613

Contact

Amanda Griffith
0488 224 445
agriffith@niche-eh.com



Winmalee (Landholder supplied)

46 Winmalee

IBRA subregion

Wollemi

Aboriginal Country

Dharug

Credit ID

Available on request

Contact

Stephanie Forsmann
0409 659 512
cs2@sydneywater.com.au

Credits available (BAM)

Acronyms:

BAM Biodiversity Assessment Method
BBAM BioBanking Assessment Method

Leucopogon fletcheri subsp.
fletcheri

18



Mungo National Park (John Spencer/DCCEEW)

47 Hawkesbury

IBRA subregion

Yengo

Aboriginal Country

Dharug

Credit ID

CR-781 *Tetradlea glandulosa*

CR-782 *Grevillea parviflora* subsp. *supplicans*

CR-780 *Darwinia biflora*

Contact

Mark Dixon
(02) 4566 8348
mark@dixonsand.com.au

Credits available (BAM)

Acronyms:

BAM Biodiversity Assessment Method
BBAM BioBanking Assessment Method

Tetradlea glandulosa

167

Grevillea parviflora subsp. *supplicans*

167

Darwinia biflora

80



Giant burrowing frog (Landholder supplied)

48 Ten Mile Hollow

IBRA subregion

Yengo

Aboriginal Country

Dharug

Credit ID

CR-27670 *Tetratheca glandulosa*

CR-27669 Red-crowned toadlet (*Pseudophryne australis*)

CR-27671 Eastern cave bat (*Vespadelus troughtoni*)

CR-27668 Giant burrowing frog (*Heleioporus australiacus*)

Contact

Ajahn Khemavaro
0480 105 070
wbdoffice@gmail.com

Credits available (BAM)

Acronyms:

BAM Biodiversity Assessment Method
BBAM BioBanking Assessment Method

Tetratheca glandulosa

248

Red-crowned toadlet

177

Eastern cave bat

124

Giant burrowing frog

54



Coastal emu (Landholder supplied)

49 Clarence Valley

IBRA subregion

Yuragir

Aboriginal Country

Dharug

Credit ID

CR-2612 Brush-tailed phascogale (*Phascogale tapoatafa*)

CR-2613 Coastal emu (*Dromaius novaehollandiae*)

Contact

David Wailes
0407 946 468
bythewind50@gmail.com

Credits available (BAM)

Acronyms:

BAM Biodiversity Assessment Method
BBAM BioBanking Assessment Method

Brush-tailed phascogale

686

Coastal emu

544

Index | Species credits

A

| | |
|---|----|
| Australian brush turkey (<i>Alectura lathami</i>) | 55 |
| Austral toadflax (<i>Thesium australe</i>) | 36 |

B

| | |
|---|----------------|
| Bailey's indigo (<i>Indigofera baileyi</i>) | 18 |
| Brush-tailed phascogale (<i>Phascogale tapoatafa</i>) | 18, 45, 60, 64 |
| Buttercup doubletail (<i>Diuris aequalis</i>) | 56 |

C

| | |
|---|------------|
| Camden white gum (<i>Eucalyptus benthamii</i>) | 16 |
| Canberra grassland earless dragon (<i>Tympanocryptis lineata</i>) | 53 |
| Capertee stringybark (<i>Eucalyptus cannonii</i>) | 33 |
| Coastal emu (<i>Dromaius novaehollandiae</i>) | 21, 64 |
| Creeping Tick-trefoil (<i>Desmodium campylocaulon</i>) | 17 |
| Cumberland Plain land snail (<i>Meridolum corneovirens</i>) | 26, 27, 58 |

D

| | |
|-----------------------------|--------|
| <i>Darwinia biflora</i> | 62 |
| <i>Dillwynia tenuifolia</i> | 25, 28 |

E

| | |
|---|--------|
| Eastern cave bat (<i>Vespadelus troughtoni</i>) | 31, 63 |
| Eastern osprey (<i>Pandion cristatus</i>) | 23 |
| Emu (<i>Dromaius novaehollandiae</i>) | 22 |

G

| | |
|--|------------|
| Giant barred frog (<i>Mixophyes iteratus</i>) | 42 |
| Giant burrowing frog (<i>Heleioporus australiacus</i>) | 63 |
| Golden sun moth (<i>Synemon plana</i>) | 47, 48, 53 |
| Grassland earless dragon (<i>Tympanocryptis pinguicotta</i>) | 52 |
| Green and golden bell frog (<i>Litoria aurea</i>) | 38, 45, 60 |
| Green-thighed frog (<i>Litoria brevipalmata</i>) | 20 |
| <i>Grevillea parviflora</i> subsp. <i>supplicans</i> | 62 |

H

| | |
|--|------------|
| Hoary sunray (<i>Leucochrysum albicans</i> subsp. <i>tricolor</i>) | 47 |
| Hoary sunray (<i>Leucochrysum albicans</i> var. <i>tricolor</i>) | 43, 49, 50 |

J

| | |
|---|------------|
| Juniper-leaved grevillea (<i>Grevillea juniperina</i> subsp. <i>juniperina</i>) | 25, 28, 58 |
|---|------------|

K

| | |
|---|--|
| Koala (<i>Phascolarctos cinereus</i>) | 18, 24, 29, 31, 33, 37, 39, 40, 42, 43, 44, 51, 59, 60 |
|---|--|

L

| | |
|---|----|
| Large bent-winged bat (<i>Miniopterus orianae oceanensis</i>) | 55 |
|---|----|

Index | Species credits continued

| | |
|---|------------------------|
| Large-eared pied bat (<i>Chalinolobus dwyeri</i>) | 31, 33, 35, 55 |
| <i>Leucopogon fletcheri</i> subsp. <i>fletcheri</i> | 61 |
| M | |
| <i>Maundia triglochinoidea</i> | 22 |
| Michelago parrot-pea (<i>Dillwynia glaucula</i>) | 46 |
| <i>Micromyrtus minutiflora</i> | 25 |
| Moonee quassia (<i>Quassia</i> sp. <i>Moonee Creek</i>) | 24 |
| O | |
| <i>Oldenlandia galioides</i> | 57 |
| P | |
| Pale pomaderris (<i>Pomaderris pallida</i>) | 46, 50 |
| Pink-tailed legless lizard (<i>Aprasia parapulchella</i>) | 49, 50 |
| Pink-tailed worm lizard (<i>Aprasia parapulchella</i>) | 47, 48, 53 |
| R | |
| Red-backed button-quail (<i>Turnix maculosus</i>) | 19 |
| Red-crowned toadlet (<i>Pseudophryne australis</i>) | 63 |
| Regent honeyeater (<i>Anthochaera phrygia</i>) | 29, 30 |
| <i>Rotala tripartita</i> | 19 |
| Rusty plum (<i>Niemeyera whitei</i>) | 24 |
| S | |
| Silky Swainson-pea (<i>Swainsona sericea</i>) | 46, 49, 50 |
| Slaty red gum (<i>Eucalyptus glaucina</i>) | 18, 19 |
| Slender darling pea (<i>Swainsona murrayana</i>) | 54 |
| Small purple-pea (<i>Swainsona recta</i>) | 47 |
| Southern myotis (<i>Myotis macropus</i>) | 38, 60 |
| Squirrel glider (<i>Petaurus norfolcensis</i>) | 22, 31, 33, 37, 44, 55 |
| Stephen's banded snake (<i>Hoplocephalus stephensii</i>) | 51 |
| Superb parrot (<i>Polytelis swainsonii</i>) | 37 |
| T | |
| Tall knotweed (<i>Persicaria elatior</i>) | 19 |
| <i>Tetradlea glandulosa</i> | 62, 63 |
| <i>Tylophora linearis</i> | 57 |
| W | |
| Wallum froglet (<i>Crinia tinnula</i>) | 23, 45 |
| Water nutgrass (<i>Cyperus aquatilis</i>) | 18 |
| White-flowered wax plant (<i>Cynanchum elegans</i>) | 34, 41 |
| Winged peppergrass (<i>Lepidium monoplocoides</i>) | 57 |

Ecosystem credits



Understanding ecosystem credits listings

List of acronyms

BAM

Biodiversity Assessment Method

BBAM

BioBanking Assessment Method

BCT

Biodiversity Conservation Trust

BOS

Biodiversity Offsets Scheme

BSA

Biodiversity Stewardship Agreement

CSF

Credits Supply Fund

CST

Credits Supply Taskforce

HBT

Hollow-bearing trees

IBRA

Interim Biogeographic Regionalisation for Australia

OTG

Offset Trading Group

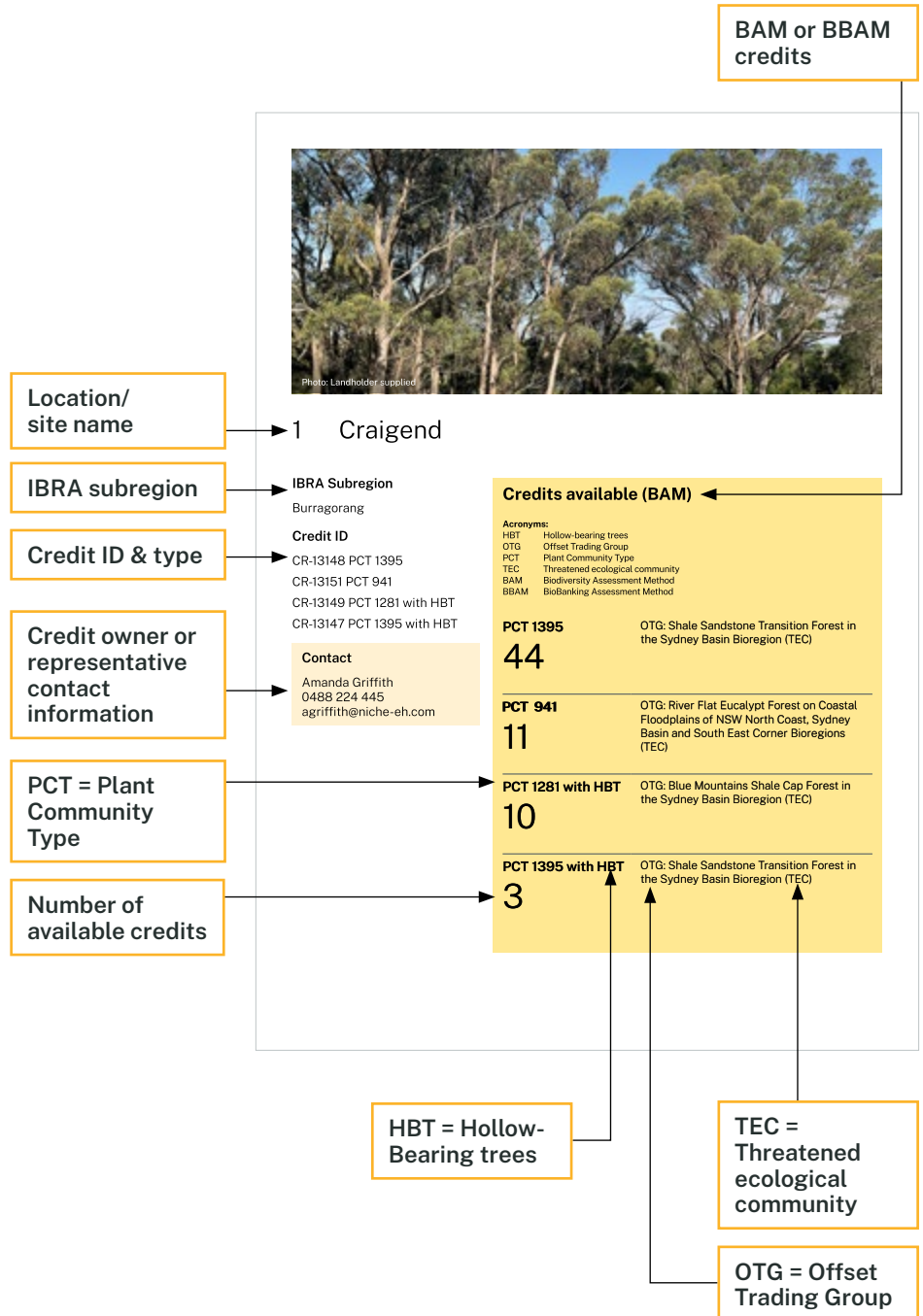
PCT

Plant Community Type

TEC

Threatened ecological community

There are key things to pay attention to when looking at listings for ecosystem credits:





1 Craigend

IBRA subregion

Burraborang

Aboriginal Country

Gundungurra

Credit ID

CR-13148 PCT 1395

CR-13151 PCT 941

CR-13149 PCT 1281 with HBT

CR-13147 PCT 1395 with HBT

Contact

Amanda Griffith
 0488 224 445
agriffith@niche-eh.com

Credits available (BAM)

Acronyms:

| | |
|------|---------------------------------|
| HBT | Hollow-bearing trees |
| OTG | Offset Trading Group |
| PCT | Plant Community Type |
| TEC | Threatened ecological community |
| BAM | Biodiversity Assessment Method |
| BBAM | BioBanking Assessment Method |

PCT 1395

44

OTG: Shale Sandstone Transition Forest in the Sydney Basin Bioregion (TEC)

PCT 941

11

OTG: River Flat Eucalypt Forest on Coastal Floodplains of NSW North Coast, Sydney Basin and South East Corner Bioregions (TEC)

PCT 1281 with HBT

10

OTG: Blue Mountains Shale Cap Forest in the Sydney Basin Bioregion (TEC)

PCT 1395 with HBT

3

OTG: Shale Sandstone Transition Forest in the Sydney Basin Bioregion (TEC)



2 Old Bara

IBRA subregion

Capertee Valley/
South Western Slopes

Aboriginal Country

Wiradjuri

Credit ID

CR-7745 PCT 281 with HBT

CR-7746 PCT 291

Contact

Sally (Sarah) Nagel
0408 764 851
tables1@gmail.com

Credits available (BAM)

Acronyms:

| | |
|------|---------------------------------|
| HBT | Hollow-bearing trees |
| OTG | Offset Trading Group |
| PCT | Plant Community Type |
| TEC | Threatened ecological community |
| BAM | Biodiversity Assessment Method |
| BBAM | BioBanking Assessment Method |

PCT 281 with HBT

559

OTG: White Box – Yellow Box – Blakely’s Red Gum Grassy Woodland and Derived Native Grassland in the NSW North Coast, New England Tableland, Nandewar, Brigalow Belt South, Sydney Basin, South Eastern Highlands, NSW South Western Slopes, South East Corner and Riverina Bioregions (TEC)

PCT 291 with HBT

206

OTG: Western Slopes Dry Sclerophyll Forests less than 50%



Cumberland Plain Woodland (Peter Ridgeway/DCCEEW)

3 Burren Junction

IBRA subregion

Castlereagh-Barwon

Aboriginal Country

Kamilaroi

Credit ID

Available on request

Contact

Diana Fallon
 0416 156 108
dianafallon@sequester.com.au

Credits available (BAM)

Acronyms:

- HBT Hollow-bearing trees
- OTG Offset Trading Group
- PCT Plant Community Type
- TEC Threatened ecological community
- BAM Biodiversity Assessment Method
- BBAM BioBanking Assessment Method

PCT 43 with HBT

3051

OTG: Myall Woodland in the Darling Riverine Plains, Brigalow Belt South, Cobar Peneplain, Murray-Darling Depression, Riverina and NSW South Western Slopes bioregions (TEC)

PCT 168

512

OTG: Artesian Springs Ecological Community in the Great Artesian Basin (TEC)

PCT 244 with HBT

341

OTG: Brigalow within the Brigalow Belt South, Nandewar and Darling Riverine Plains Bioregions (TEC)

PCT 53

143

OTG: Artesian Springs Ecological Community in the Great Artesian Basin (TEC)

PCT 40 with HBT

139

OTG: Coolibah-Black Box Woodland in the Darling Riverine Plains, Brigalow Belt South, Cobar Peneplain and Mulga Lands Bioregions (TEC)

PCT 628 with HBT

8

OTG: Carbeen Open Forest Community in the Darling Riverine Plains and Brigalow Belt South Bioregions (TEC)



4 Kanowna 1

IBRA subregion

Castlereagh-Barwon

Aboriginal Country

Wiradjuri

Credit ID

CR-22870 PCT 52

CR-22869 PCT 40

CR-22871 PCT 53

CR-22874 PCT 71

CR-22875 PCT 242

CR-22872 PCT 55 with HBT

Contact

Bradley Tucker
0402 269 439
brad@tuckerenviron.com.au

Credits available (BAM)

Acronyms:

| | |
|------|---------------------------------|
| HBT | Hollow-bearing trees |
| OTG | Offset Trading Group |
| PCT | Plant Community Type |
| TEC | Threatened ecological community |
| BAM | Biodiversity Assessment Method |
| BBAM | BioBanking Assessment Method |

PCT 52

1249

OTG: Semi-arid Floodplain Grasslands greater than or equal to 70% and less than 90%

PCT 40

1033

OTG: Coolibah-Black Box Woodland in the Darling Riverine Plains, Brigalow Belt South, Cobar Penneplain and Mulga Lands Bioregions (TEC)

PCT 53

256

OTG: Inland Floodplain Swamps greater than or equal to 50% and less than 70%

PCT 71

219

OTG: Carbeen Open Forest Community in the Darling Riverine Plains and Brigalow Belt South Bioregions (TEC)

PCT 242

206

OTG: Semi-arid Floodplain Grasslands greater than or equal to 50% and less than 70%

PCT 55 with HBT

177

OTG: North-west Floodplain Woodlands greater than or equal to 70% and less than 90%



Coolibah-Black Box Woodland (Barry Collier/DCCEEW)

5 Kanowna 2

IBRA subregion

Castlereagh-Barwon

Aboriginal Country

Wiradjuri

Credit ID

CR-22868 PCT 40 with HBT

CR-22873 PCT 56 with HBT

Contact

Bradley Tucker
0402 269 439
brad@tuckerenviron.com.au

Credits available (BAM)

Acronyms:

| | |
|------|---------------------------------|
| HBT | Hollow-bearing trees |
| OTG | Offset Trading Group |
| PCT | Plant Community Type |
| TEC | Threatened ecological community |
| BAM | Biodiversity Assessment Method |
| BBAM | BioBanking Assessment Method |

PCT 40 with HBT

29

OTG: Coolibah-Black Box Woodland in the Darling Riverine Plains, Brigalow Belt South, Cobar Peneplain and Mulga Lands Bioregions (TEC)

PCT 56 with HBT

7

OTG: Floodplain Transition Woodlands greater than or equal to 70% and less than 90%



Ermelo (Landholder supplied)

6 Ermelo

IBRA subregion

Clarence Lowlands

Aboriginal Country

Bundjalung

Credit ID

CR-3519 PCT 1209 with HBT

CR-3522 PCT 852 with HBT

CR-3520 PCT 1209 with HBT

CR-3523 PCT 837

CR-3524 PCT 780

Contact

Greg Steenbeeke
0402 068 489
henribark@outlook.com.au

Credits available (BAM)

Acronyms:

| | |
|------|---------------------------------|
| HBT | Hollow-bearing trees |
| OTG | Offset Trading Group |
| PCT | Plant Community Type |
| TEC | Threatened ecological community |
| BAM | Biodiversity Assessment Method |
| BBAM | BioBanking Assessment Method |

PCT 1209 with HBT OTG: Clarence Dry Sclerophyll Forests less than 50%

788

PCT 852 with HBT OTG: Subtropical Coastal Floodplain Forest of NSW North Coast Bioregion (TEC)

98

PCT 1209 with HBT OTG: Clarence Dry Sclerophyll Forests less than 50%

37

PCT 837 OTG: Subtropical Coastal Floodplain Forest of the NSW North Coast Bioregion (TEC)

24

PCT 780 OTG: Freshwater Wetlands of Coastal Floodplains of NSW North Coast, Sydney Basin and South East Corner Bioregions (TEC)

1



7 Myall Downs

IBRA subregion

Clarence Lowlands

Aboriginal Country

Bundjalung

Credit ID

CR-12407 PCT 837 with HBT

CR-12408 PCT 682 with HBT

CR-12409 PCT 1064 with HBT

CR-12410 PCT 782

CR-12411 PCT 826 with HBT

Contact

Amanda Griffith
0488 224 445
agriffith@niche-eh.com

Credits available (BAM)

Acronyms:

| | |
|------|---------------------------------|
| HBT | Hollow-bearing trees |
| OTG | Offset Trading Group |
| PCT | Plant Community Type |
| TEC | Threatened ecological community |
| BAM | Biodiversity Assessment Method |
| BBAM | BioBanking Assessment Method |

PCT 837 with HBT

2410

OTG: Swamp Sclerophyll Forest on Coastal Floodplains of NSW North Coast, Sydney Basin and South East Corner Bioregions (TEC)

PCT 682 with HBT

1413

OTG: North Coast Dry Sclerophyll Forests less than 50%

PCT 1064 with HBT

142

OTG: Coastal Swamp Forests greater than or equal to 70% and less than 90%

PCT 782

22

OTG: Freshwater Wetlands on Coastal Floodplains of NSW North Coast, Sydney Basin and South East Corner Bioregions (TEC)

PCT 826 with HBT

9

OTG: North Coast Wet Sclerophyll Forests less than 50%



Coastal Freshwater Lagoons (Jackie Miles/DCCEEW)

8 New Italy

IBRA subregion

Clarence Lowlands

Aboriginal Country

Bundjalung

Credit ID

CR-2756 PCT 782

Contact

Daniel Rolley
0406 580 500
[daniel.rolley@
financialdecisions.com.au](mailto:daniel.rolley@financialdecisions.com.au)

Credits available (BAM)

Acronyms:

| | |
|------|---------------------------------|
| HBT | Hollow-bearing trees |
| OTG | Offset Trading Group |
| PCT | Plant Community Type |
| TEC | Threatened ecological community |
| BAM | Biodiversity Assessment Method |
| BBAM | BioBanking Assessment Method |

PCT 782

1310

OTG: Coastal Freshwater Lagoons less than 50%



Swamp Sclerophyll Forest (Jackie Miles/DCCEEW)

9 Tyndale

IBRA subregion

Clarence Sandstones

Aboriginal Country

Gumbainggir

Credit ID

CR-5808 PCT 837 with HBT

CR-5807 PCT 1064 with HBT

CR-5809 PCT 861 with HBT

CR-5810 PCT 1211 with HBT

Contact

Amanda Griffith
0488 224 445
agriffith@niche-eh.com

Credits available (BAM)

Acronyms:

| | |
|------|---------------------------------|
| HBT | Hollow-bearing trees |
| OTG | Offset Trading Group |
| PCT | Plant Community Type |
| TEC | Threatened ecological community |
| BAM | Biodiversity Assessment Method |
| BBAM | BioBanking Assessment Method |

PCT 837 with HBT

388

OTG: Subtropical Coastal Floodplain Forest of the New South Wales North Coast Bioregion (TEC)

PCT 1064 with HBT

187

OTG: Swamp Sclerophyll Forest on Coastal Floodplains of the New South Wales North Coast, Sydney Basin and South East Corner Bioregions (TEC)

PCT 861 with HBT

53

OTG: Clarence Dry Sclerophyll Forests less than 50%

PCT 1211 with HBT

3

OTG: Clarence Dry Sclerophyll Forests greater than or equal to 50% and less than 70%



Inland Grey Box Woodland (Rob Armstrong/DCCEEW)

10 Chelsea

IBRA subregion

Cobar Peneplain

Aboriginal Country

Ngemba, Ngiyampaa,
Wangaaypuwan and Wayilwan

Credit ID

Available on request

Contact

Jonathon Thompson
[jonathon.thompson@
aureliametals.com.au](mailto:jonathon.thompson@
aureliametals.com.au)

Credits available (BAM)

Acronyms:

| | |
|------|---------------------------------|
| HBT | Hollow-bearing trees |
| OTG | Offset Trading Group |
| PCT | Plant Community Type |
| TEC | Threatened ecological community |
| BAM | Biodiversity Assessment Method |
| BBAM | BioBanking Assessment Method |

PCT 82 with HBT

3868

OTG: Inland Grey Box Woodland in the Riverina, NSW South Western Slopes, Cobar Peneplain, Nandewar and Brigalow Belt South Bioregions (TEC)



Coastal Heath Swamp (Jamie James/DCCEEW)

11 Emerald Beach

IBRA subregion

Coffs Coast and Escarpment

Aboriginal Country

Gumbainggir

Credit ID

CR-3183 PCT 1064

CR-3184 PCT 1297

CR-3185 PCT 837 with HBT

CR-3186 PCT 663

Contact

Daniel Williams
0427 660 581
regen8biosol@gmail.com

Credits available (BAM)

Acronyms:

| | |
|------|---------------------------------|
| HBT | Hollow-bearing trees |
| OTG | Offset Trading Group |
| PCT | Plant Community Type |
| TEC | Threatened ecological community |
| BAM | Biodiversity Assessment Method |
| BBAM | BioBanking Assessment Method |

PCT 1064

144

OTG: Swamp Sclerophyll Forest on Coastal Floodplains of the New South Wales North Coast, Sydney Basin and South East Corner Bioregions (TEC)

PCT 1297

40

OTG: Coastal Heath Swamps greater than or equal to 70% and less than 90%

PCT 837 with HBT

10

OTG: Subtropical Coastal Floodplain Forest of the New South Wales North Coast Bioregion (TEC)

PCT 663

9

OTG: Wallum Sand Heaths greater than or equal to 70% and less than 90%



Subtropical Rainforest (John Turbill/DCCEEW)

12 Moonee Beach

IBRA subregion

Coffs Coast and Escarpment

Aboriginal Country

Dharug

Credit ID

Available on request

Contact

Jinderpal Singh Rai
 0413 100 549 or
 (02) 6654 2357
jaaprai@gmail.com

Credits available (BAM)

Acronyms:

| | |
|------|---------------------------------|
| HBT | Hollow-bearing trees |
| OTG | Offset Trading Group |
| PCT | Plant Community Type |
| TEC | Threatened ecological community |
| BAM | Biodiversity Assessment Method |
| BBAM | BioBanking Assessment Method |

PCT 695 with HBT OTG: North Coast Wet Sclerophyll Forests less than 50%

28

PCT 1302 with HBT OTG: Subtropical Rainforests greater than or equal to 70% and less than 90%

28

PCT 1259 with HBT OTG: North Coast Wet Sclerophyll Forests less than 50%

22

PCT 1569 with HBT OTG: North Coast Wet Sclerophyll Forests less than 50%

17



Bargo (Landholder supplied)

13 Bargo

IBRA subregion

Cumberland

Aboriginal Country

Tharawal

Credit ID

CR-2041 PCT 1081

CR-2400 PCT 1181

CR-2043 PCT 1081

CR-2044 PCT 1081

Contact

Phil Purnell
phil@cgpnsw.com.au

Credits available (BAM)

Acronyms:

- HBT Hollow-bearing trees
- OTG Offset Trading Group
- PCT Plant Community Type
- TEC Threatened ecological community
- BAM Biodiversity Assessment Method
- BBAM BioBanking Assessment Method

PCT 1081

OTG: Sydney Hinterland Dry Sclerophyll Forests less than 50%

105

PCT 1181

OTG: Sydney Coastal Dry Sclerophyll Forests less than 50%

18

PCT 1081

OTG: Sydney Hinterland Dry Sclerophyll Forests less than 50%

5

PCT 1081

OTG: Sydney Hinterland Dry Sclerophyll Forests less than 50%

2



14 Cumberland

IBRA subregion

Cumberland

Aboriginal Country

Gundungurra

Credit ID

CR-2769 PCT 830 with HBT

CR-2373 PCT 877 with HBT

CR-2372 PCT 830 with HBT

Contact

Caryl Dias
 (02) 9633 3333
cdias@dvtgroup.com.au

Credits available (BAM)

Acronyms:

HBT Hollow-bearing trees
 OTG Offset Trading Group
 PCT Plant Community Type
 TEC Threatened ecological community
 BAM Biodiversity Assessment Method
 BBAM BioBanking Assessment Method

PCT 830 with HBT

OTG: Moist Shale Woodland in the Sydney Basin Bioregion (TEC)

54

PCT 877 with HBT

OTG: Western Sydney Dry Rainforest in the Sydney Basin Bioregion (TEC)

50

PCT 830 with HBT

OTG: Moist Shale Woodland in the Sydney Basin Bioregion (TEC)

21



Fernhill Estate (Landholder supplied)

15 Fernhill Estate

IBRA subregion

Cumberland

Aboriginal Country

Dharug

Credit ID

CR-1260 PCT 1284

CR-1497 PCT 877

CR-1502 PCT 1071

CR-1501 PCT 883

Contact

Cubelic Holdings Pty Ltd
 0474 888 000
alecon@bigpond.com

Credits available (BBAM)

Acronyms:

| | |
|------|---------------------------------|
| HBT | Hollow-bearing trees |
| OTG | Offset Trading Group |
| PCT | Plant Community Type |
| TEC | Threatened ecological community |
| BAM | Biodiversity Assessment Method |
| BBAM | BioBanking Assessment Method |

PCT 1284

OTG: North Coast Wet Sclerophyll Forests less than 50%

56

PCT 877

OTG: Dry Rainforests less than 50%

34

PCT 1071

OTG: Freshwater Wetlands on Coastal Floodplains of the New South Wales North Coast, Sydney Basin and South East Corner Bioregions (TEC)

22

PCT 883

OTG: Sydney Sand Flats Dry Sclerophyll Forests greater than or equal to 50% and less than 70%

17



Cumberland Plain Woodland (Landholder supplied)

16 Mowbray Park

IBRA subregion

Cumberland

Aboriginal Country

Tharawal

Credit ID

Available on request

Contact

Michael Spork
 0408 776 759
michael.spork@biocreditsaus.com

Credits available (BAM)

Acronyms:

HBT Hollow-bearing trees
 OTG Offset Trading Group
 PCT Plant Community Type
 TEC Threatened ecological community
 BAM Biodiversity Assessment Method
 BBAM BioBanking Assessment Method

PCT 3319

OTG: Cumberland Plain Woodland in the Sydney Basin Bioregion (TEC)

613

PCT 3319 with HBT

OTG: Cumberland Plain Woodland in the Sydney Basin Bioregion (TEC)

423

PCT 4025

OTG: Coastal Floodplain Wetlands greater than or equal to 70% and less than 90%

80



Cumberland Plain Woodland (Rosie Nicolai/DCCEEW)

17 Rickards Road

IBRA subregion

Cumberland

Aboriginal Country

Dharug

Credit ID

Available on request

Contact

Eddy Hawach
0420 511 727
eddy.h@envirowaste.com.au

Credits available (BBAM)

Acronyms:

| | |
|------|---------------------------------|
| HBT | Hollow-bearing trees |
| OTG | Offset Trading Group |
| PCT | Plant Community Type |
| TEC | Threatened ecological community |
| BAM | Biodiversity Assessment Method |
| BBAM | BioBanking Assessment Method |

PCT 725

74

OTG: Cumberland Dry Sclerophyll Forests
greater than or equal to 90%



Cumberland Plain Woodland (Simone Cottrell/DCCEEW)

18 Sunnyside 1

IBRA subregion

Cumberland

Aboriginal Country

Dharug

Credit ID

Available on request

Contact

Michael Spork
 0408 776 759
michael.spork@biocreditsaus.com

Credits available (BAM)

Acronyms:

HBT Hollow-bearing trees
 OTG Offset Trading Group
 PCT Plant Community Type
 TEC Threatened ecological community
 BAM Biodiversity Assessment Method
 BBAM BioBanking Assessment Method

PCT 830

OTG: Moist Shale Woodland in the Sydney Basin Bioregion (TEC)

28

PCT 877

OTG: Western Sydney Dry Rainforest in the Sydney Basin Bioregion (TEC)

27



Cumberland Plain Woodland (Rosie Nicolai/DCCEEW)

19 Sunnyside 2

IBRA subregion

Cumberland

Aboriginal Country

Dharug

Credit ID

Available on request

Contact

Michael Spork
 0408 776 759
michael.spork@biocreditsaus.com

Credits available (BAM)

Acronyms:

HBT Hollow-bearing trees
 OTG Offset Trading Group
 PCT Plant Community Type
 TEC Threatened ecological community
 BAM Biodiversity Assessment Method
 BBAM BioBanking Assessment Method

PCT 850 with HBT

OTG: Cumberland Plain Woodland in the Sydney Basin Bioregion (TEC)

245

PCT 877

OTG: Western Sydney Dry Rainforest in the Sydney Basin Bioregion (TEC)

14



River-Flat Eucalypt Forest (Jackie Miles/DCCEEW)

20 Twin Creeks Golf Club

IBRA subregion

Cumberland

Aboriginal Country

Dharug

Credit ID

CR-3288 PCT 725

CR-3284 PCT 835

Contact

Twin Creeks Holdings Ltd,
TCG Developments
0474 888 000
alecon@bigpond.com

Credits available (BBAM)

Acronyms:

| | |
|------|---------------------------------|
| HBT | Hollow-bearing trees |
| OTG | Offset Trading Group |
| PCT | Plant Community Type |
| TEC | Threatened ecological community |
| BAM | Biodiversity Assessment Method |
| BBAM | BioBanking Assessment Method |

PCT 725

407

OTG: Cumberland Dry Sclerophyll Forests greater than or equal to 90%

PCT 835

115

OTG: River-Flat Eucalypt Forest on Coastal Floodplains of the New South Wales North Coast, Sydney Basin and South East Corner Bioregions (TEC)

PCT 849

10

OTG: Coastal Valley Grassy Woodlands greater than or equal to 90%



21 Bornhardtia

IBRA subregion

Eastern Nandewars

Aboriginal Country

Kamilaroi

Credit ID

CR-26247 PCT 3724 with HBT

CR-26248 PCT 3855 with HBT

CR-26246 PCT 3710 with HBT

CR-26245 PCT 3705 with HBT

CR-26244 PCT 3363 with HBT

Contact

Thesium Biocredits
0402 068 489
or 0474 888 000
credits@thesium.com.au

Credits available (BAM)

Acronyms:

| | |
|------|---------------------------------|
| HBT | Hollow-bearing trees |
| OTG | Offset Trading Group |
| PCT | Plant Community Type |
| TEC | Threatened ecological community |
| BAM | Biodiversity Assessment Method |
| BBAM | BioBanking Assessment Method |

PCT 3724 with HBT

1336

OTG: Northern Tableland Dry Sclerophyll Forests less than 50%

PCT 3855 with HBT

541

OTG: Howell Shrublands in the New England Tableland and Nandewar Bioregions (TEC)

PCT 3710 with HBT

329

OTG: Northern Tableland Dry Sclerophyll Forests less than 50%

PCT 3705 with HBT

113

OTG: Northern Tableland Dry Sclerophyll Forests less than 50%

PCT 3363 with HBT

44

OTG: White Box - Yellow Box - Blakely's Red Gum Grassy Woodland and Derived Native Grassland in the NSW North Coast, New England Tableland, Nandewar, Brigalow Belt South, Sydney Basin, South Eastern Highlands, NSW South Western Slopes, South East Corner and Riverina (TEC)



Carex Sedgeland (Lachlan Copeland/DCCEEW)

22 Bornhardtia 2

IBRA subregion

Eastern Nandewars

Aboriginal Country

Kamilaroi

Credit ID

CR-26249 PCT 3944

Contact

Thesium Biocredits
0402 068 489
or 0474 888 000
credits@thesium.com.au

Credits available (BAM)

Acronyms:

| | |
|------|---------------------------------|
| HBT | Hollow-bearing trees |
| OTG | Offset Trading Group |
| PCT | Plant Community Type |
| TEC | Threatened ecological community |
| BAM | Biodiversity Assessment Method |
| BBAM | BioBanking Assessment Method |

PCT 3944

11

OTG: Carex Sedgeland of the New England Tableland, Nandewar, Brigalow Belt South and NSW North Coast Bioregions (TEC)



Rockview South (Landholder supplied)

23 Rockview South 1

IBRA subregion

Eastern Nandewars

Aboriginal Country

Nganyaywana

Credit ID

CR-3112 PCT 502 with HBT

CR-3115 PCT 552 with HBT

CR-3119 PCT 544 with HBT

CR-3116 PCT 564 with HBT

CR-3120 PCT 544 with HBT

Contact

Thesium Biocredits
 0402 068 489
 or 0474 888 000
credits@thesium.com.au

Credits available (BBAM)

Acronyms:

| | |
|------|---------------------------------|
| HBT | Hollow-bearing trees |
| OTG | Offset Trading Group |
| PCT | Plant Community Type |
| TEC | Threatened ecological community |
| BAM | Biodiversity Assessment Method |
| BBAM | BioBanking Assessment Method |

PCT 502 with HBT

2316

OTG: Northern Tableland Dry Sclerophyll Forests greater than or equal to 50% and less than 70%

PCT 552 with HBT

607

OTG: Northern Tableland Dry Sclerophyll Forests less than 50%

PCT 544 with HBT

284

OTG: White Box – Yellow Box – Blakely’s Red Gum Grassy Woodland and Derived Native Grassland in the NSW North Coast, New England Tableland, Nandewar, Brigalow Belt South, Sydney Basin, South Eastern Highlands, NSW South Western Slopes, South East Corner and Riverina Bioregions (TEC)

PCT 564 with HBT

114

OTG: North-west Slopes Dry Sclerophyll Woodlands greater than or equal to 70% and less than 90%

PCT 544 with HBT

66

OTG: White Box – Yellow Box – Blakely’s Red Gum Grassy Woodland and Derived Native Grassland in the NSW North Coast, New England Tableland, Nandewar, Brigalow Belt South, Sydney Basin, South Eastern Highlands, NSW South Western Slopes, South East Corner and Riverina Bioregions (TEC)



Rockview South (Landholder supplied)

24 Rockview South 2

IBRA subregion

Eastern Nandewars

Aboriginal Country

Nganyaywana

Credit ID

CR-3121 PCT 544 with HBT

CR-3123 PCT 574

CR-3117 PCT 564 with HBT

CR-3113 PCT 502

CR-12411 PCT 826 with HBT

Contact

Thesium Biocredits
0402 068 489
or 0474 888 000
credits@thesium.com.au

Credits available (BBAM)

Acronyms:

| | |
|------|---------------------------------|
| HBT | Hollow-bearing trees |
| OTG | Offset Trading Group |
| PCT | Plant Community Type |
| TEC | Threatened ecological community |
| BAM | Biodiversity Assessment Method |
| BBAM | BioBanking Assessment Method |

PCT 544 with HBT

39

OTG: White Box – Yellow Box – Blakely’s Red Gum Grassy Woodland and Derived Native Grassland in the NSW North Coast, New England Tableland, Nandewar, Brigalow Belt South, Sydney Basin, South Eastern Highlands, NSW South Western Slopes, South East Corner and Riverina Bioregions (TEC)

PCT 574

37

OTG: Northern Montane Heaths greater than or equal to 70% and less than 90%

PCT 564 with HBT

34

OTG: North-west Slopes Dry Sclerophyll Woodlands greater than or equal to 70% and less than 90%

PCT 502

17

OTG: Northern Tableland Dry Sclerophyll Forests greater than or equal to 50% and less than 70%

PCT 544 with HBT

7

OTG: White Box – Yellow Box – Blakely’s Red Gum Grassy Woodland and Derived Native Grassland in the NSW North Coast, New England Tableland, Nandewar, Brigalow Belt South, Sydney Basin, South Eastern Highlands, NSW South Western Slopes, South East Corner and Riverina Bioregions (TEC)



Rockview South (Landholder supplied)

25 Rockview South 3

IBRA subregion

Eastern Nandewars

Aboriginal Country

Nganyaywana

Credit ID

CR-3114 PCT 502 with HBT

CR-3118 PCT 564 with HBT

Contact

Thesium Biocredits
0402 068 489
or 0474 888 000
credits@thesium.com.au

Credits available (BBAM)

Acronyms:

| | |
|------|---------------------------------|
| HBT | Hollow-bearing trees |
| OTG | Offset Trading Group |
| PCT | Plant Community Type |
| TEC | Threatened ecological community |
| BAM | Biodiversity Assessment Method |
| BBAM | BioBanking Assessment Method |

PCT 502 with HBT

4

OTG: Northern Tableland Dry Sclerophyll Forests greater than or equal to 50% and less than 70%

PCT 564 with HBT

4

OTG: North-west Slopes Dry Sclerophyll Woodlands greater than or equal to 70% and less than 90%



26 Allambie

IBRA subregion

Ellerston

Aboriginal Country

Geawegal

Credit ID

Available on request

Contact

Thesium Biocredits
0402 068 489
or 0474 888 000
credits@thesium.com.au

Credits available (BBAM)

Acronyms:

| | |
|------|---------------------------------|
| HBT | Hollow-bearing trees |
| OTG | Offset Trading Group |
| PCT | Plant Community Type |
| TEC | Threatened ecological community |
| BAM | Biodiversity Assessment Method |
| BBAM | BioBanking Assessment Method |

PCT 1606 with HBT OTG: North-west Slopes Dry Sclerophyll Woodlands less than 50%

212

PCT 1605 with HBT OTG: Central Hunter Grey Box – Ironbark Woodland in the New South Wales North Coast and Sydney Basin Bioregions (TEC)

197

PCT 618 with HBT OTG: White Box – Yellow Box – Blakely's Red Gum Grassy Woodland and Derived Native Grassland in the NSW North Coast, New England Tableland, Nandewar, Brigalow Belt South, Sydney Basin, South Eastern Highlands, NSW South Western Slopes, South East Corner and Riverina Bioregions (TEC)

191

PCT 1605 with HBT OTG: North-west Slopes Dry Sclerophyll Woodlands less than 50%

181

PCT 1654 with HBT OTG: Western Slopes Dry Sclerophyll Forests less than 50%

122



27 Allambie 2

IBRA subregion

Ellerston

Aboriginal Country

Geawegal

Credit ID

Available on request

Contact

Thesium Biocredits
0402 068 489
or 0474 888 000
credits@thesium.com.au

Credits available (BBAM)

Acronyms:

HBT Hollow-bearing trees
OTG Offset Trading Group
PCT Plant Community Type
TEC Threatened ecological community
BAM Biodiversity Assessment Method
BBAM BioBanking Assessment Method

PCT 616 with HBT

OTG: Dry Rainforests less than 50%

72

PCT 624 with HBT

OTG: Sydney Hinterland Dry Sclerophyll Forests less than 50%

44



Western NSW Dry Sclerophyll Woodland (Jessica Stokes/DCCEEW)

28 Matheson

IBRA subregion

Glen Innes-Guyra Basalts

Aboriginal Country

Ngoorabul

Credit ID

CR-2919 PCT 554 with HBT

Contact

Garry Huard
0438 479 500
grhuard@hotmail.com

Credits available (BAM)

Acronyms:

| | |
|------|---------------------------------|
| HBT | Hollow-bearing trees |
| OTG | Offset Trading Group |
| PCT | Plant Community Type |
| TEC | Threatened ecological community |
| BAM | Biodiversity Assessment Method |
| BBAM | BioBanking Assessment Method |

PCT 554 with HBT

404

OTG: Ribbon Gum – Mountain Gum – Snow Gum Grassy Forest/Woodland of the New England Tableland Bioregion (TEC)



Harts Gully (Landholder supplied)

29 Harts Gully

IBRA subregion

Hill End

Aboriginal Country

Wiradjuri

Credit ID

Available on request

Contact

Thesium Biocredits
0402 068 489
or 0474 888 000
credits@thesium.com.au

Credits available (BBAM)

Acronyms:

| | |
|------|---------------------------------|
| HBT | Hollow-bearing trees |
| OTG | Offset Trading Group |
| PCT | Plant Community Type |
| TEC | Threatened ecological community |
| BAM | Biodiversity Assessment Method |
| BBAM | BioBanking Assessment Method |

PCT 3536 with HBT

1624

OTG: Upper Riverina Dry Sclerophyll Forests greater than or equal to 50% and less than 70%

PCT 3376 with HBT

195

OTG: White Box – Yellow Box – Blakely’s Red Gum Grassy Woodland and Derived Native Grassland in the NSW North Coast, New England Tableland, Nandewar, Brigalow Belt South, Sydney Basin, South Eastern Highlands, NSW South Western Slopes, South East Corner and Riverina Bioregions (TEC)

PCT 3747 with HBT

185

OTG: Southern Tableland Dry Sclerophyll Forests greater than or equal to 50% and less than 70%

PCT 3533 with HBT

34

OTG: White Box – Yellow Box – Blakely’s Red Gum Grassy Woodland and Derived Native Grassland in the NSW North Coast, New England Tableland, Nandewar, Brigalow Belt South, Sydney Basin, South Eastern Highlands, NSW South Western Slopes, South East Corner and Riverina Bioregions (TEC)



Harts Gully (Landholder supplied)

30 Harts Gully 2

IBRA subregion

Hill End

Aboriginal Country

Wiradjuri

Credit ID

Available on request

Contact

Thesium Biocredits
 0402 068 489
 or 0474 888 000
credits@thesium.com.au

Credits available (BBAM)

Acronyms:

| | |
|------|---------------------------------|
| HBT | Hollow-bearing trees |
| OTG | Offset Trading Group |
| PCT | Plant Community Type |
| TEC | Threatened ecological community |
| BAM | Biodiversity Assessment Method |
| BBAM | BioBanking Assessment Method |

PCT 3536

28

OTG: Southern Tableland Dry Sclerophyll Forests greater than or equal to 50% and less than 70%

PCT 3536

9

OTG: Upper Riverina Dry Sclerophyll Forests greater than or equal to 50% and less than 70%



31 Journey's End West

IBRA subregion

Hill End

Aboriginal Country

Wiradjuri

Credit ID

CR-5908 PCT 266 with HBT

CR-5909 PCT 342 with HBT

CR-5906 PCT 85

Contact

Amanda Griffith
0488 224 445
agriffith@niche-eh.com

Credits available (BAM)

Acronyms:

| | |
|------|---------------------------------|
| HBT | Hollow-bearing trees |
| OTG | Offset Trading Group |
| PCT | Plant Community Type |
| TEC | Threatened ecological community |
| BAM | Biodiversity Assessment Method |
| BBAM | BioBanking Assessment Method |

PCT 266 with HBT OTG: White Box –Yellow Box –Blakely's Red Gum Grassy Woodland and Derived Native Grassland in the NSW North Coast, New England Tableland, Nandewar, Brigalow Belt South, Sydney Basin, South Eastern Highlands, NSW South Western Slopes, South East Corner and Riverina Bioregions (TEC)

573

PCT 342 with HBT OTG: White Box –Yellow Box –Blakely's Red Gum Grassy Woodland and Derived Native Grassland in the NSW North Coast, New England Tableland, Nandewar, Brigalow Belt South, Sydney Basin, South Eastern Highlands, NSW South Western Slopes, South East Corner and Riverina Bioregions (TEC)

214

PCT 85 OTG: Eastern Riverine Forests greater than or equal to 70% and less than 90%

184



Central Hunter Grey Box (Stephen Bell/DCCEEW)

32 Maxwell

IBRA subregion

Hunter

Aboriginal Country

Wonnarua

Credit ID

CR-26065 PCT 1692 with HBT

CR-26059 PCT 1606

CR-26060 PCT 1607 with HBT

CR-26062 PCT 1655 with HBT

CR-26056 PCT 116

Contact

Donna McLaughlin
 (02) 6542 0283
dmclaughlin@malabarresources.com.au

Credits available (BAM)

Acronyms:

| | |
|------|---------------------------------|
| HBT | Hollow-bearing trees |
| OTG | Offset Trading Group |
| PCT | Plant Community Type |
| TEC | Threatened ecological community |
| BAM | Biodiversity Assessment Method |
| BBAM | BioBanking Assessment Method |

PCT 1692 with HBT

173

OTG: Central Hunter Grey Box — Ironbark Woodland in the New South Wales North Coast and Sydney Basin Bioregions (TEC)

PCT 1606

23

OTG: White Box - Yellow Box - Blakely's Red Gum Grassy Woodland and Derived Native Grassland in the NSW North Coast, New England Tableland, Nandewar, Brigalow Belt South, Sydney Basin, South Eastern Highlands, NSW South Western Slopes, South East Corner and Riverina Bioregions (TEC)

PCT 1607 with HBT

10

OTG: North-west Slopes Dry Sclerophyll Woodlands greater than or equal to 50% and less than 70%

PCT 1655 with HBT

10

OTG: Hunter Valley Footslopes Slaty Gum Woodland in the Sydney Basin Bioregion (TEC)

PCT 116

1

OTG: Hunter Valley Weeping Myall Woodland in the Sydney Basin Bioregion (TEC)



33 Redgum Ridge

IBRA subregion

Illawarra

Aboriginal Country

Tharawal

Credit ID

CR-2307 PCT 1245 with HBT

CR-2311 PCT 1300 with HBT

Contact

Max de Beer
 0478 560 999
maxdebeer@lodgeenviro.com.au

Credits available (BBAM)

Acronyms:

HBT Hollow-bearing trees
 OTG Offset Trading Group
 PCT Plant Community Type
 TEC Threatened ecological community
 BAM Biodiversity Assessment Method
 BBAM BioBanking Assessment Method

PCT 1245 with HBT OTG: North Coast Wet Sclerophyll Forests less than 50%

105

PCT 1300 with HBT OTG: Dry Rainforests greater than or equal to 90%

58



Three Hundred Acre Wood (Landholder supplied)

34 Three Hundred Acre Wood

IBRA subregion

Illawarra

Aboriginal Country

Tharawal

Credit ID

Available on request

Contact

Matt Kelly
0423 463 363
mattjkelly91@gmail.com

Credits available (BAM)

Acronyms:

| | |
|------|---------------------------------|
| HBT | Hollow-bearing trees |
| OTG | Offset Trading Group |
| PCT | Plant Community Type |
| TEC | Threatened ecological community |
| BAM | Biodiversity Assessment Method |
| BBAM | BioBanking Assessment Method |

PCT 1245 with HBT OTG: North Coast Wet Sclerophyll Forests less than 50%

342

PCT 906 with HBT OTG: Subtropical Rainforests greater than or equal to 50% and less than 70%

205

PCT 878 with HBT OTG: Southern Escarpment Wet Sclerophyll Forests less than 50%

126



Western Slopes Grassy Woodlands (Susan Jackson/DCCEEW)

35 Bigga

IBRA subregion

Inland Slopes

Aboriginal Country

Wiradjuri

Credit ID

Available on request

Contact

Samer Sayegh
 0478 587 452
samersayegh21@gmail.com

Credits available (BAM)

Acronyms:

- HBT Hollow-bearing trees
- OTG Offset Trading Group
- PCT Plant Community Type
- TEC Threatened ecological community
- BAM Biodiversity Assessment Method
- BBAM BioBanking Assessment Method

| | |
|---|--|
| <p>PCT 1279</p> <p>1438</p> | <p>OTG: Western Slopes Dry Sclerophyll Forests greater than or equal to 70% and less than 90%</p> |
| <p>PCT 339</p> <p>364</p> | <p>OTG: Upper Riverina Dry Sclerophyll Forests less than 50%</p> |
| <p>PCT 338</p> <p>155</p> | <p>OTG: Upper Riverina Dry Sclerophyll Forests greater than or equal to 90%</p> |
| <p>PCT 272</p> <p>144</p> | <p>OTG: Western Slopes Grassy Woodlands greater than or equal to 50% and less than 70%</p> |
| <p>PCT 282</p> <p>4</p> | <p>OTG: White Box – Yellow Box – Blakely’s Red Gum Grassy Woodland and Derived Native Grassland in the NSW North Coast, New England Tableland, Nandewar, Brigalow Belt South, Sydney Basin, South Eastern Highlands, NSW South Western Slopes, South East Corner and Riverina Bioregions (TEC)</p> |



Hughes Road (Landholder supplied)

36 Hughes Road

IBRA subregion

Inland Slopes

Aboriginal Country

Wiradjuri

Credit ID

CR-17775 PCT 266

CR-17774 PCT 266 with HBT

CR-17777 PCT 274 with HBT

CR-17779 PCT 461 with HBT

Contact

Amanda Griffith
 0488 224 445
agriffith@niche-eh.com

Credits available (BAM)

Acronyms:

- HBT Hollow-bearing trees
- OTG Offset Trading Group
- PCT Plant Community Type
- TEC Threatened ecological community
- BAM Biodiversity Assessment Method
- BBAM BioBanking Assessment Method

PCT 266

465

OTG: White Box – Yellow Box – Blakely’s Red Gum Grassy Woodland and Derived Native Grassland in the NSW North Coast, New England Tableland, Nandewar, Brigalow Belt South, Sydney Basin, South Eastern Highlands, NSW South Western Slopes, South East Corner and Riverina Bioregions (TEC)

PCT 266 with HBT

251

OTG: White Box – Yellow Box – Blakely’s Red Gum Grassy Woodland and Derived Native Grassland in the NSW North Coast, New England Tableland, Nandewar, Brigalow Belt South, Sydney Basin, South Eastern Highlands, NSW South Western Slopes, South East Corner and Riverina Bioregions (TEC)

PCT 274 with HBT

121

OTG: White Box – Yellow Box – Blakely’s Red Gum Grassy Woodland and Derived Native Grassland in the NSW North Coast, New England Tableland, Nandewar, Brigalow Belt South, Sydney Basin, South Eastern Highlands, NSW South Western Slopes, South East Corner and Riverina Bioregions (TEC)

PCT 461 with HBT

107

OTG: Western Slopes Grassy Woodlands greater than or equal to 50% and less than 70%



Glen Lea (Landholder supplied)

37 Glen Lea

IBRA subregion

Inland Slopes

Aboriginal Country

Wiradjuri

Credit ID

CR-17775 PCT 266

CR-17779 PCT 461 with HBT

CR-17778 PCT 287 with HBT

Contact

Amanda Griffith
0488 224 445
agriffith@niche-eh.com

Credits available (BAM)

Acronyms:

| | |
|------|---------------------------------|
| HBT | Hollow-bearing trees |
| OTG | Offset Trading Group |
| PCT | Plant Community Type |
| TEC | Threatened ecological community |
| BAM | Biodiversity Assessment Method |
| BBAM | BioBanking Assessment Method |

PCT 266

465

OTG: White Box – Yellow Box – Blakely’s Red Gum Grassy Woodland and Derived Native Grassland in the NSW North Coast, New England Tableland, Nandewar, Brigalow Belt South, Sydney Basin, South Eastern Highlands, NSW South Western Slopes, South East Corner and Riverina Bioregions (TEC)

PCT 461 with HBT

58

OTG: Western Slopes Dry Sclerophyll Forests greater than or equal to 50% and less than 70%

PCT 287 with HBT

7

OTG: Western Slopes Dry Sclerophyll Forests greater than or equal to 50% and less than 70%



North Corringle (Landholder supplied)

38 North Corringle 1

IBRA subregion

Inland Slopes

Aboriginal Country

Gundungurra and Ngunawal

Credit ID

CR-21455 PCT 287 with HBT

CR-21459 PCT 352 with HBT

CR-21456 PCT 277 with HBT

CR-21454 PCT 461 with HBT

Contact

Jack Talbert
0423 296 045
jackt@lodgeenviro.com.au

Credits available (BAM)

Acronyms:

| | |
|------|---------------------------------|
| HBT | Hollow-bearing trees |
| OTG | Offset Trading Group |
| PCT | Plant Community Type |
| TEC | Threatened ecological community |
| BAM | Biodiversity Assessment Method |
| BBAM | BioBanking Assessment Method |

PCT 287 with HBT OTG: Western Slopes Dry Sclerophyll Forests greater than or equal to 50% and less than 70%

1219

PCT 352 with HBT OTG: White Box –Yellow Box –Blakely’s Red Gum Grassy Woodland and Derived Native Grassland in the NSW North Coast, New England Tableland, Nandewar, Brigalow Belt South, Sydney Basin, South Eastern Highlands, NSW South Western Slopes, South East Corner and Riverina Bioregions (TEC)

102

PCT 277 with HBT OTG: White Box –Yellow Box –Blakely’s Red Gum Grassy Woodland and Derived Native Grassland in the NSW North Coast, New England Tableland, Nandewar, Brigalow Belt South, Sydney Basin, South Eastern Highlands, NSW South Western Slopes, South East Corner and Riverina Bioregions (TEC)

98

PCT 266 with HBT OTG: White Box –Yellow Box –Blakely’s Red Gum Grassy Woodland and Derived Native Grassland in the NSW North Coast, New England Tableland, Nandewar, Brigalow Belt South, Sydney Basin, South Eastern Highlands, NSW South Western Slopes, South East Corner and Riverina Bioregions (TEC)

34



North Corringle (Landholder supplied)

39 North Corringle 2

IBRA subregion

Inland Slopes

Aboriginal Country

Gundungurra and Ngunawal

Credit ID

CR-21458 PCT 322 with HBT

CR-21457 PCT 277

Contact

Jack Talbert
0423 296 045
jackt@lodgeenviro.com.au

Credits available (BAM)

Acronyms:

| | |
|------|---------------------------------|
| HBT | Hollow-bearing trees |
| OTG | Offset Trading Group |
| PCT | Plant Community Type |
| TEC | Threatened ecological community |
| BAM | Biodiversity Assessment Method |
| BBAM | BioBanking Assessment Method |

PCT 322 with HBT OTG: Western Slopes Dry Sclerophyll Forests less than 50%

2

PCT 277

1

OTG: White Box – Yellow Box – Blakely’s Red Gum Grassy Woodland and Derived Native Grassland in the NSW North Coast, New England Tableland, Nandewar, Brigalow Belt South, Sydney Basin, South Eastern Highlands, NSW South Western Slopes, South East Corner and Riverina Bioregions (TEC)



Woodside (Landholder supplied)

40 Woodside 1

IBRA subregion

Inland Slopes

Aboriginal Country

Wiradjuri

Credit ID

Available on request

Contact

Chris Attenborough
 0419 291 042 or
 0448 997 787
chris@woodsidepastoral.com.au

Credits available (BAM)

Acronyms:

HBT Hollow-bearing trees
 OTG Offset Trading Group
 PCT Plant Community Type
 TEC Threatened ecological community
 BAM Biodiversity Assessment Method
 BBAM BioBanking Assessment Method

PCT 266 with HBT

735

OTG: White Box - Yellow Box - Blakely's Red Gum Grassy Woodland and Derived Native Grassland in the NSW North Coast, New England Tableland, Nandewar, Brigalow Belt South, Sydney Basin, South Eastern (TEC)

PCT 292 with HBT

551

OTG: Inland Rocky Hill Woodlands less than 50%

PCT 329 with HBT

498

OTG: Inland Rocky Hill Woodlands less than 50%

PCT 330 with HBT

435

OTG: Western Slopes Dry Sclerophyll Forests greater than or equal to 50% and less than 70%

PCT 347 with HBT

83

OTG: White Box - Yellow Box - Blakely's Red Gum Grassy Woodland and Derived Native Grassland in the NSW North Coast, New England Tableland, Nandewar, Brigalow Belt South, Sydney Basin, South Eastern (TEC)



White Box - Yellow Box - Grazzy Woodland (Rob Armstrong/DCCEEW)

41 Woodside 2

IBRA subregion

Inland Slopes

Aboriginal Country

Wiradjuri

Credit ID

Available on request

Contact

Chris Attenborough
 0419 291 042 or
 0448 997 787
chris@woodsidepastoral.com.au

Credits available (BAM)

Acronyms:

HBT Hollow-bearing trees
 OTG Offset Trading Group
 PCT Plant Community Type
 TEC Threatened ecological community
 BAM Biodiversity Assessment Method
 BBAM BioBanking Assessment Method

PCT 217 with HBT

258

OTG: Western Slopes Dry Sclerophyll Forests greater than or equal to 50% and less than 70%

PCT 267 with HBT

136

OTG: White Box - Yellow Box - Blakely's Red Gum Grassy Woodland and Derived Native Grassland in the NSW North Coast, New England Tableland, Nandewar, Brigalow Belt South, Sydney Basin, South Eastern (TEC)

PCT 354 with HBT

74

OTG: Western Slopes Dry Sclerophyll Forests less than 50%

PCT 186 with HBT

72

OTG: Inland Rocky Hill Woodlands less than 50%

PCT 280 with HBT

25

OTG: White Box - Yellow Box - Blakely's Red Gum Grassy Woodland and Derived Native Grassland in the NSW North Coast, New England Tableland, Nandewar, Brigalow Belt South, Sydney Basin, South Eastern (TEC)



Western Slopes Dry Sclerophyll Forest (Jessica Stokes/DCCEEW)

42 Woodside 3

IBRA subregion

Inland Slopes

Aboriginal Country

Wiradjuri

Credit ID

Available on request

Contact

Chris Attenborough
 0419 291 042 or
 0448 997 787
chris@woodsidepastoral.com.au

Credits available (BAM)

Acronyms:

| | |
|------|---------------------------------|
| HBT | Hollow-bearing trees |
| OTG | Offset Trading Group |
| PCT | Plant Community Type |
| TEC | Threatened ecological community |
| BAM | Biodiversity Assessment Method |
| BBAM | BioBanking Assessment Method |

PCT 272 with HBT

52

OTG: Western Slopes Grassy Woodlands greater than or equal to 50% and less than 70%

PCT 332 with HBT

35

OTG: Inland Rocky Hill Woodlands less than 50%



43 Bawley Point

IBRA subregion

Jervis

Aboriginal Country

Tharawal

Credit ID

CR-18712 PCT 1231

CR-18711 PCT 1079 with HBT

CR-18713 PCT 1236

Contact

Louis Kacir
0418 265 472
louiskacir@gmail.com

Credits available (BAM)

Acronyms:

| | |
|------|---------------------------------|
| HBT | Hollow-bearing trees |
| OTG | Offset Trading Group |
| PCT | Plant Community Type |
| TEC | Threatened ecological community |
| BAM | Biodiversity Assessment Method |
| BBAM | BioBanking Assessment Method |

PCT 1231

66

OTG: Coastal Swamp Forests greater than or equal to 50% and less than 70%

PCT 1079 with HBT

52

OTG: Southern Lowland Wet Sclerophyll Forests less than 50%

PCT 1236

30

OTG: Coastal Floodplain Wetlands less than 50%



Bulahdelah (Landholder supplied)

44 Bulahdelah

IBRA subregion

Karuah Manning

Aboriginal Country

Worimi

Credit ID

CR-9792 PCT 1549 with HBT

CR-9794 PCT 1215 with HBT

CR-9795 PCT 1567 with HBT

CR-9793 PCT 1569

CR-9796 PCT 1534

CR-9796 PCT 1534 with HBT

Contact

Walter Kaan
0432 761 546
wakaan@gmail.com

Credits available (BAM)

Acronyms:

| | |
|------|---------------------------------|
| HBT | Hollow-bearing trees |
| OTG | Offset Trading Group |
| PCT | Plant Community Type |
| TEC | Threatened ecological community |
| BAM | Biodiversity Assessment Method |
| BBAM | BioBanking Assessment Method |

PCT 1549 with HBT OTG: Northern Hinterland Wet Sclerophyll Forests less than 50%

1102

PCT 1215 with HBT OTG: Subtropical Coastal Floodplain Forest of NSW North Coast Bioregion (TEC)

75

PCT 1567 with HBT OTG: North Coast Wet Sclerophyll Forests less than 50%

32

PCT 1569 OTG: North Coast Wet Sclerophyll Forests less than 50%

14

PCT 1534 OTG: Lowland Rainforest on Floodplain in NSW North Coast Bioregion (TEC)

10

PCT 1534 with HBT OTG: Lowland Rainforest on Floodplain in NSW North Coast Bioregion (TEC)

10



Glenhaven (Landholder supplied)

45 Glenhaven

IBRA subregion

Karuah Manning

Aboriginal Country

Worimi

Credit ID

CR-123 PCT 1561 with HBT

CR-122 PCT 1534 with HBT

CR-124 PCT 1561

Contact

Amanda Griffith
 0488 224 445
agriffith@niche-eh.com

Credits available (BAM)

Acronyms:

HBT Hollow-bearing trees
 OTG Offset Trading Group
 PCT Plant Community Type
 TEC Threatened ecological community
 BAM Biodiversity Assessment Method
 BBAM BioBanking Assessment Method

PCT 1561 with HBT

OTG: North Coast Wet Sclerophyll Forests less than 50%

1269

PCT 1534 with HBT

OTG: Lowland Rainforest on Floodplain in NSW North Coast Bioregion (TEC)

1301

PCT 1561

OTG: North Coast Wet Sclerophyll Forests less than 50%

214



Heatherbrae (Landholder supplied)

46 Heatherbrae

IBRA subregion

Karuah Manning

Aboriginal Country

Awabakal

Credit ID

CR-2018 with HBT

CR-2020 with HBT

CR-2023

Contact

Angus Seberry
 0417 655 685
angus.seberry@hunterwater.com.au

Credits available (BAM)

Acronyms:

HBT Hollow-bearing trees
 OTG Offset Trading Group
 PCT Plant Community Type
 TEC Threatened ecological community
 BAM Biodiversity Assessment Method
 BBAM BioBanking Assessment Method

CR-2018 with HBT

OTG: Coastal Dune Dry Sclerophyll Forests less than 50%

450

CR-2020 with HBT

OTG: Coastal Swamp Forests greater than or equal to 70% and less than 90%

56

CR-2023

OTG: Coastal Swamp Forests greater than or equal to 70% and less than 90%

46



Raelands (Landholder supplied)

47 Raelands farm - Barrington

IBRA subregion

Karuah Manning

Aboriginal Country

Worimi

Credit ID

Available on request

Contact

James McRae
 0431 360 945 or
 0404 783 886
raelandsfarm@gmail.com

Credits available (BAM)

Acronyms:

| | |
|------|---------------------------------|
| HBT | Hollow-bearing trees |
| OTG | Offset Trading Group |
| PCT | Plant Community Type |
| TEC | Threatened ecological community |
| BAM | Biodiversity Assessment Method |
| BBAM | BioBanking Assessment Method |

PCT 1549 with HBT OTG: Northern Hinterland Wet Sclerophyll Forests less than 50%

199

PCT 1215 with HBT OTG: Hunter-Macleay Dry Sclerophyll Forests less than 50%

134

PCT 1541 with HBT OTG: Lower Hunter Valley Dry Rainforest in the Sydney Basin and NSW North Coast Bioregions (TEC)

81

PCT 1215 OTG: Hunter-Macleay Dry Sclerophyll Forests less than 50%

10



The Lost Property (Landholder supplied)

48 The Lost Property

IBRA subregion

Karuah Manning

Aboriginal Country

Worimi

Credit ID

CR-9792 PCT 1549 with HBT

CR-9794 PCT 1215 with HBT

CR-9795 PCT 1567 with HBT

CR-9796 PCT 1534 with HBT

CR-9793 PCT 1569

Contact

Amanda Griffith
0488 224 445
agriffith@niche-eh.com

Credits available (BAM)

Acronyms:

| | |
|------|---------------------------------|
| HBT | Hollow-bearing trees |
| OTG | Offset Trading Group |
| PCT | Plant Community Type |
| TEC | Threatened ecological community |
| BAM | Biodiversity Assessment Method |
| BBAM | BioBanking Assessment Method |

PCT 1549 with HBT

OTG: Northern Hinterland Wet Sclerophyll Forests less than 50%

1100

PCT 1215 with HBT

OTG: Hunter-Macleay Dry Sclerophyll Forests less than 50%

75

PCT 1567 with HBT

OTG: North Coast Wet Sclerophyll Forests less than 50%

32

PCT 1534 with HBT

OTG: Lowland Rainforest on Floodplain in the New South Wales North Coast Bioregion (TEC)

20

PCT 1569

OTG: North Coast Wet Sclerophyll Forests less than 50%

14



Vision Falls (Landholder supplied)

49 Vision Falls

IBRA subregion

Karuah Manning

Aboriginal Country

Worimi

Credit ID

- CR-6777 PCT 1285 with HBT
- CR-6782 PCT 1567 with HBT
- CR-6779 PCT 1549 with HBT
- CR-6781 PCT 1561 with HBT
- CR-6780 PCT 1556 with HBT

Contact

Veronica Harris
 0455 207 266
vero.harris77@gmail.com

Credits available (BAM)

Acronyms:

- HBT Hollow-bearing trees
- OTG Offset Trading Group
- PCT Plant Community Type
- TEC Threatened ecological community
- BAM Biodiversity Assessment Method
- BBAM BioBanking Assessment Method

PCT 1285 with HBT OTG: North Coast Wet Sclerophyll Forests more than 50% and less than 70%

6612

PCT 1567 with HBT OTG: North Coast Wet Sclerophyll Forests less than 50%

4925

PCT 1549 with HBT OTG: Northern Hinterland Wet Sclerophyll Forests less than 50%

2532

PCT 1561 with HBT OTG: North Coast Wet Sclerophyll Forests less than 50%

831

PCT 1556 with HBT OTG: Northern Hinterland Wet Sclerophyll Forests less than 50%

792



Northern Rainforest (Jackie Miles/DCCEEW)

50 Vision Falls

IBRA subregion

Karuah Manning

Aboriginal Country

Worimi

Credit ID

CR-6776 PCT 905

CR-6778 PCT 1530

CR-6783 PCT 1568

Contact

Veronica Harris
 0455 207 266
vero.harris77@gmail.com

Credits available (BAM)

Acronyms:

HBT Hollow-bearing trees
 OTG Offset Trading Group
 PCT Plant Community Type
 TEC Threatened ecological community
 BAM Biodiversity Assessment Method
 BBAM BioBanking Assessment Method

PCT 905

OTG: Northern Warm Temperate Rainforests less than 50%

144

PCT 1530

OTG: Northern Warm Temperate Rainforests less than 50%

144

PCT 1568

OTG: North Coast Wet Sclerophyll Forests less than 50%

80



Adjenbilly Creek (James Lindsey/Lodge Environmental)

51 Adjenbilly Creek 1

IBRA subregion

Kybeyan-Gourock and Monaro

Aboriginal Country

Ngarigo and Yuin

Credit ID

Available on request

Contact

Kali Reid
0431 953 968
kalitreid@gmail.com

Credits available (BAM)

Acronyms:

| | |
|------|---------------------------------|
| HBT | Hollow-bearing trees |
| OTG | Offset Trading Group |
| PCT | Plant Community Type |
| TEC | Threatened ecological community |
| BAM | Biodiversity Assessment Method |
| BBAM | BioBanking Assessment Method |

PCT 1101 with HBT

OTG: Tableland Clay Grassy Woodlands greater than or equal to 90%

495

PCT 953 with HBT

OTG: Southern Tableland Dry Sclerophyll Forests less than 50%

310

PCT 1100 with HBT

OTG: Monaro Tableland Cool Temperate Grassy Woodland in the South Eastern Highlands Bioregion (TEC)

231

PCT 679 with HBT

OTG: Subalpine Woodlands less than 50%

117



Adjenbilly Creek (James Lindsey/Lodge Environmental)

52 Adjenbilly Creek 2

IBRA subregion

Kybeyan-Gourock and Monaro

Aboriginal Country

Ngarigo and Yuin

Credit ID

Available on request

Contact

Kali Reid
0431 953 968
kalitreid@gmail.com

Credits available (BAM)

Acronyms:

| | |
|------|---------------------------------|
| HBT | Hollow-bearing trees |
| OTG | Offset Trading Group |
| PCT | Plant Community Type |
| TEC | Threatened ecological community |
| BAM | Biodiversity Assessment Method |
| BBAM | BioBanking Assessment Method |

PCT 729 with HBT

OTG: Southern Tableland Dry Sclerophyll Forests less than 50%

73

PCT 1256

OTG: Montane Peatlands and Swamps of the New England Tableland, NSW North Coast, Sydney Basin, South East Corner, South Eastern Highlands and Australian Alps bioregions (TEC)

52

PCT 952 with HBT

OTG: Subalpine Woodlands greater than or equal to 50% and less than 70%

47

PCT 1191 with HBT

OTG: Subalpine Woodlands greater than or equal to 90%

27



Butherwah Park (Landholder supplied)

53 Butherwah Park

IBRA subregion

Lower Slopes

Aboriginal Country

Wiradjuri

Credit ID

Available on request

Contact

Rebecca Butler
0429 028 124 or
0427 309 100
adebeckbutler@gmail.com

Credits available (BAM)

Acronyms:

| | |
|------|---------------------------------|
| HBT | Hollow-bearing trees |
| OTG | Offset Trading Group |
| PCT | Plant Community Type |
| TEC | Threatened ecological community |
| BAM | Biodiversity Assessment Method |
| BBAM | BioBanking Assessment Method |

PCT 7

OTG: Inland Riverine Forests less than 50%

98



Butherwah Park (Landholder supplied)

54 Butherwah Park 2

IBRA subregion

Lower Slopes

Aboriginal Country

Wiradjuri

Credit ID

Available on request

Contact

Rebecca Butler
0429 028 124 or
0427 309 100
adebeckbutler@gmail.com

Credits available (BAM)

Acronyms:

| | |
|------|---------------------------------|
| HBT | Hollow-bearing trees |
| OTG | Offset Trading Group |
| PCT | Plant Community Type |
| TEC | Threatened ecological community |
| BAM | Biodiversity Assessment Method |
| BBAM | BioBanking Assessment Method |

PCT 75

445

OTG: White Box – Yellow Box – Blakely’s Red Gum Grassy Woodland and Derived Native Grassland in the NSW North Coast, New England Tableland, Nandewar, Brigalow Belt South, Sydney Basin, South Eastern Highlands, NSW South Western Slopes, South East Corner and Riverina Bioregions (TEC)



Northern Hinterland Wet Sclerophyll Forests (Leah Pippas/DCCEEW)

55 West Kunderang

IBRA subregion

Macleay Gorges and Armidale Plateau

Aboriginal Country

Dainggatti and Nganyaywana

Credit ID

Available on request

Contact

Cynthia McRae
0429 192 810
westkunderang@bigpond.com

Credits available (BAM)

Acronyms:

HBT Hollow-bearing trees
OTG Offset Trading Group
PCT Plant Community Type
TEC Threatened ecological community
BAM Biodiversity Assessment Method
BBAM BioBanking Assessment Method

PCT 3461 with HBT OTG: Northern Gorge Dry Sclerophyll Forests less than 50%

7246

PCT 3240 with HBT OTG: Northern Hinterland Wet Sclerophyll Forests less than 50%

2846

PCT 3286 with HBT OTG: Northern Tableland Wet Sclerophyll Forests less than 50%

183

PCT 4078 with HBT OTG: Eastern Riverine Forests less than 50%

71

PCT 3033 with HBT OTG: Northern Warm Temperate Rainforests less than 50%

4



Kunderang (Gerhard Koertner/DCCEEW)

56 West Kunderang 2

IBRA subregion

Macleay Gorges
and Armidale Plateau

Aboriginal Country

Dainggatti and Nganyaywana

Credit ID

Available on request

Contact

Cynthia McRae
0429 192 810
westkunderang@bigpond.com

Credits available (BAM)

Acronyms:

| | |
|------|---------------------------------|
| HBT | Hollow-bearing trees |
| OTG | Offset Trading Group |
| PCT | Plant Community Type |
| TEC | Threatened ecological community |
| BAM | Biodiversity Assessment Method |
| BBAM | BioBanking Assessment Method |

PCT 3101 with HBT

OTG: Dry Rainforests less than 50%

2321

PCT 3329 with HBT

OTG: Coastal Valley Grassy Woodlands greater than or equal to 70% and less than 90%

244

PCT 3254 with HBT

OTG: Northern Hinterland Wet Sclerophyll Forests less than 50%

13



Belmore River (Landholder supplied)

57 Belmore River

IBRA subregion

Macleay Hastings

Aboriginal Country

Dainggatti

Credit ID

CR-102 PCT 1230

CR-103 PCT 1064

CR-104 PCT 1290

Contact

Amanda Griffith
 0488 224 445
agriffith@niche-eh.com

Credits available (BBAM)

Acronyms:

HBT Hollow-bearing trees
 OTG Offset Trading Group
 PCT Plant Community Type
 TEC Threatened ecological community
 BAM Biodiversity Assessment Method
 BBAM BioBanking Assessment Method

PCT 1230

69

OTG: Swamp Oak Floodplain Forest of NSW North Coast, Sydney Basin and South East Corner Bioregions (TEC)

PCT 1064

66

OTG: Swamp Sclerophyll Forest on Coastal Floodplains of NSW North Coast, Sydney Basin and South East Corner Bioregions (TEC)

PCT 1290

36

OTG: Coastal Freshwater Lagoons greater than or equal to 70% and less than 90%



Monaro (Stuart Cohen/DCCEEW)

58 Burra North

IBRA subregion

Monaro

Aboriginal Country

Ngarigo and Ngunawal

Credit ID

CR-22188 PCT 649 with HBT

CR-22191 PCT 1334 with HBT

CR-22190 PCT 1093 with HBT

Contact

Craig Goggin
0413 034 661
craig.goggin@hotmail.com

Credits available (BAM)

Acronyms:

| | |
|------|---------------------------------|
| HBT | Hollow-bearing trees |
| OTG | Offset Trading Group |
| PCT | Plant Community Type |
| TEC | Threatened ecological community |
| BAM | Biodiversity Assessment Method |
| BBAM | BioBanking Assessment Method |

PCT 649 with HBT

OTG: Southern Tableland Dry Sclerophyll Forests less than 50%

219

PCT 1334 with HBT

OTG: White Box – Yellow Box – Blakely’s Red Gum Grassy Woodland and Derived Native Grassland in the NSW North Coast, New England Tableland, Nandewar, Brigalow Belt South, Sydney Basin, South Eastern Highlands, NSW South Western Slopes, South East Corner and Riverina Bioregions (TEC)

37

PCT 1093 with HBT

OTG: Southern Tableland Dry Sclerophyll Forests greater than or equal to 50% and less than 70%

TBC



59 Panorama

IBRA subregion

Monaro

Aboriginal Country

Ngunawal

Credit ID

CR-2639 PCT 349 with HBT
 CR-2637 PCT 1330 with HBT
 CR-2640 PCT 349

Contact

Robin Pty Ltd
wandiyali.restoration@gmail.com

Credits available (BAM)

Acronyms:

HBT Hollow-bearing trees
 OTG Offset Trading Group
 PCT Plant Community Type
 TEC Threatened ecological community
 BAM Biodiversity Assessment Method
 BBAM BioBanking Assessment Method

PCT 349 with HBT

121

OTG: Southern Tableland Dry Sclerophyll Forests greater than or equal to 50% and less than 70%

PCT 1330 with HBT

74

OTG: White Box – Yellow Box – Blakely’s Red Gum Grassy Woodland and Derived Native Grassland in the NSW North Coast, New England Tableland, Nandewar, Brigalow Belt South, Sydney Basin, South Eastern Highlands, NSW South Western Slopes, South East Corner and Riverina Bioregions (TEC)

PCT 349

44

OTG: Southern Tableland Dry Sclerophyll Forests greater than or equal to 50% and less than 70%



Dry Sclerophyll Forest (Stuart Cohen/DCCEEW)

60 Swans

IBRA subregion

Monaro

Aboriginal Country

Ngunawal

Credit ID

CR-2648 PCT 1330 with HBT

CR-2649 PCT 349 with HBT

CR-2646 PCT 939

Contact

Robin Pty Ltd
wandiyali.restoration@gmail.com

Credits available (BAM)

Acronyms:

| | |
|------|---------------------------------|
| HBT | Hollow-bearing trees |
| OTG | Offset Trading Group |
| PCT | Plant Community Type |
| TEC | Threatened ecological community |
| BAM | Biodiversity Assessment Method |
| BBAM | BioBanking Assessment Method |

PCT 1330 with HBT

261

OTG: White Box – Yellow Box – Blakely’s Red Gum Grassy Woodland and Derived Native Grassland in the NSW North Coast, New England Tableland, Nandewar, Brigalow Belt South, Sydney Basin, South Eastern Highlands, NSW South Western Slopes, South East Corner and Riverina Bioregions (TEC)

PCT 349 with HBT

41

OTG: Southern Tableland Dry Sclerophyll Forests greater than or equal to 50% and less than 70%

PCT 939

6

OTG: Montane Bogs and Fens greater than or equal to 50% and less than 70%



61 Williamsdale North

IBRA subregion

Monaro

Aboriginal Country

Ngarigo and Ngunawal

Credit ID

CR-20717 PCT 649 with HBT

Contact

Craig Goggin
0413 034 661
craig.goggin@hotmail.com

Credits available (BAM)

Acronyms:

| | |
|------|---------------------------------|
| HBT | Hollow-bearing trees |
| OTG | Offset Trading Group |
| PCT | Plant Community Type |
| TEC | Threatened ecological community |
| BAM | Biodiversity Assessment Method |
| BBAM | BioBanking Assessment Method |

PCT 649 with HBT

176

OTG: Southern Tableland Dry
Sclerophyll Forests less than 50%



White Box - Yellow Box (Susan Jackson/DCCEEW)

62 Williamsdale South

IBRA subregion

Monaro

Aboriginal Country

Ngarigo and Ngunawal

Credit ID

CR-20823 PCT 1334 with HBT

Contact

Craig Goggin
0413 034 661
craig.goggin@hotmail.com

Credits available (BAM)

Acronyms:

| | |
|------|---------------------------------|
| HBT | Hollow-bearing trees |
| OTG | Offset Trading Group |
| PCT | Plant Community Type |
| TEC | Threatened ecological community |
| BAM | Biodiversity Assessment Method |
| BBAM | BioBanking Assessment Method |

PCT 1334 with HBT

166

OTG: White Box – Yellow Box – Blakely’s Red Gum Grassy Woodland and Derived Native Grassland in the NSW North Coast, New England Tableland, Nandewar, Brigalow Belt South, Sydney Basin, South Eastern Highlands, NSW South Western Slopes, South East Corner and Riverina Bioregions (TEC)



Slaty red gum (Barry Collier/DCCEEW)

63 Southern Highlands

IBRA subregion

Moss Vale

Aboriginal Country

Gundungurra and Tharawal

Credit ID

Available on request

Contact

Patrick Clarke
0419 998 802
patrick.clarke@ccgaustralia.com

Credits available (BAM)

Acronyms:

| | |
|------|---------------------------------|
| HBT | Hollow-bearing trees |
| OTG | Offset Trading Group |
| PCT | Plant Community Type |
| TEC | Threatened ecological community |
| BAM | Biodiversity Assessment Method |
| BBAM | BioBanking Assessment Method |

PCT 1254 with HBT

OTG: Blue Mountains Basalt Forest in the Sydney Basin Bioregion (TEC)

118



Gloucester Greater Region (Landholder supplied)

64 Gloucester Greater Region

IBRA subregion

Mummel Escarpment

Aboriginal Country

Biripi

Credit ID

Available on request

Contact

Lisa Alexander
0421 229 195
lisa@dohertywhite.com.au

Credits available (BAM)

Acronyms:

| | |
|------|---------------------------------|
| HBT | Hollow-bearing trees |
| OTG | Offset Trading Group |
| PCT | Plant Community Type |
| TEC | Threatened ecological community |
| BAM | Biodiversity Assessment Method |
| BBAM | BioBanking Assessment Method |

PCT 622 with HBT OTG: Coastal Valley Grassy Woodlands greater than or equal to 50% and less than 70%
416

PCT 1583 with HBT OTG: Northern Gorge Dry Sclerophyll Forests less than 50%
246

PCT 1142 with HBT OTG: Dry Rainforests less than 50%
142

PCT 622 OTG: Coastal Valley Grassy Woodlands greater than or equal to 50% and less than 70%
31

PCT 1142 OTG: Dry Rainforests less than 50%
18

PCT 1583 OTG: Northern Gorge Dry Sclerophyll Forests less than 50%
9



North Poplars (Landholder supplied)

65 North Poplars

IBRA subregion

Murrumbateman

Aboriginal Country

Ngambri and Ngunawal

Credit ID

CR-2685 PCT 1289

CR-2689 PCT 1202

CR-2687 PCT 1330 with HBT

Contact

Robin Pty Ltd
wandiyali.restoration@gmail.com

Credits available (BAM)

Acronyms:

| | |
|------|---------------------------------|
| HBT | Hollow-bearing trees |
| OTG | Offset Trading Group |
| PCT | Plant Community Type |
| TEC | Threatened ecological community |
| BAM | Biodiversity Assessment Method |
| BBAM | BioBanking Assessment Method |

PCT 1289

102

OTG: Temperate Montane Grasslands greater than or equal to 50% and less than 70%

PCT 1202

57

OTG: Temperate Montane Grasslands greater than or equal to 50% and less than 70%

PCT 1330 with HBT

9

OTG: White Box – Yellow Box – Blakely’s Red Gum Grassy Woodland and Derived Native Grassland in the NSW North Coast, New England Tableland, Nandewar, Brigalow Belt South, Sydney Basin, South Eastern Highlands, NSW South Western Slopes, South East Corner and Riverina Bioregions (TEC)



South Poplars (Landholder supplied)

66 South Poplars

IBRA subregion

Murrumbateman

Aboriginal Country

Ngambri and Ngunawal

Credit ID

CR-2680 PCT 1289

CR-2679 PCT 1202

CR-2681 PCT 1289

CR-2682 PCT 1330 with HBT

Contact

Robin Pty Ltd
wandiyali.restoration@gmail.com

Credits available (BAM)

Acronyms:

| | |
|------|---------------------------------|
| HBT | Hollow-bearing trees |
| OTG | Offset Trading Group |
| PCT | Plant Community Type |
| TEC | Threatened ecological community |
| BAM | Biodiversity Assessment Method |
| BBAM | BioBanking Assessment Method |

PCT 1289

158

OTG: Temperate Montane Grasslands greater than or equal to 50% and less than 70%

PCT 1202

68

OTG: Temperate Montane Grasslands greater than or equal to 50% and less than 70%

PCT 1289

15

OTG: Temperate Montane Grasslands greater than or equal to 50% and less than 70%

PCT 1330 with HBT

2

OTG: White Box – Yellow Box – Blakely’s Red Gum Grassy Woodland and Derived Native Grassland in the NSW North Coast, New England Tableland, Nandewar, Brigalow Belt South, Sydney Basin, South Eastern Highlands, NSW South Western Slopes, South East Corner and Riverina Bioregions (TEC)



Bladder Saltbush shrubland (Landholder supplied)

67 Old Galah

IBRA subregion

Murrumbidgee

Aboriginal Country

Wiradjuri

Credit ID

CR-25589 PCT 164 with HBT

CR-25588 PCT 157

CR-25587 PCT 17

Contact

George Auld
0429 856 109
gauldist@bigpond.com

Credits available (BAM)

Acronyms:

| | |
|------|---------------------------------|
| HBT | Hollow-bearing trees |
| OTG | Offset Trading Group |
| PCT | Plant Community Type |
| TEC | Threatened ecological community |
| BAM | Biodiversity Assessment Method |
| BBAM | BioBanking Assessment Method |

PCT 164 with HBT

499

OTG: Riverine Chenopod Shrublands less than 50%

PCT 157

312

OTG: Riverine Chenopod Shrublands greater than or equal to 50% and less than 70%

PCT 17

95

OTG: Inland Floodplain Shrublands greater than or equal to 50% and less than 70%



Semi-evergreen Vine Thicket (Martin Sullivan/DCCEEW)

68 Bombell Valley

IBRA subregion

Northern Basalts

Aboriginal Country

Kamilaroi

Credit ID

Available on request

Contact

Thesium Biocredits
0402 068 489
or 0474 888 000
credits@thesium.com.au

Credits available (BAM)

Acronyms:

| | |
|------|---------------------------------|
| HBT | Hollow-bearing trees |
| OTG | Offset Trading Group |
| PCT | Plant Community Type |
| TEC | Threatened ecological community |
| BAM | Biodiversity Assessment Method |
| BBAM | BioBanking Assessment Method |

PCT 1383

522

OTG: White Box – Yellow Box – Blakely’s Red Gum Grassy Woodland and Derived Native Grassland in the NSW North Coast, New England Tableland, Nandewar, Brigalow Belt South, Sydney Basin, South Eastern Highlands, NSW South Western Slopes, South East Corner and Riverina Bioregions (TEC)

PCT 597 with HBT

180

OTG: North-west Slopes Dry Sclerophyll Woodlands greater than or equal to 50% and less than 70%

PCT 531 with HBT

142

OTG: Western Slopes Dry Sclerophyll Forests less than 50%

PCT 147 with HBT

126

OTG: Semi-evergreen Vine Thicket in the Brigalow Belt South and Nandewar Bioregions (TEC)

PCT 549

108

OTG: North-west Slopes Dry Sclerophyll Woodlands less than 50%



Bombell Valley (Landholder supplied)

69 Bombell Valley 2

IBRA subregion

Northern Basalts

Aboriginal Country

Kamilaroi

Credit ID

Available on request

Contact

Thesium Biocredits
 0402 068 489
 or 0474 888 000
credits@thesium.com.au

Credits available (BAM)

Acronyms:

| | |
|------|---------------------------------|
| HBT | Hollow-bearing trees |
| OTG | Offset Trading Group |
| PCT | Plant Community Type |
| TEC | Threatened ecological community |
| BAM | Biodiversity Assessment Method |
| BBAM | BioBanking Assessment Method |

PCT 581 with HBT OTG: Western Slopes Dry Sclerophyll Forests greater than or equal to 50% and less than 70%

81

PCT 531 OTG: Western Slopes Dry Sclerophyll Forests less than 50%

72

PCT 422 with HBT OTG: Yetman Dry Sclerophyll Forests less than 50%

35

PCT 429 OTG: North-west Slopes Dry Sclerophyll Woodlands greater than or equal to 50% and less than 70%

25

PCT 428 OTG: Carbeen Open Forest Community in the Darling Riverine Plains and Brigalow Belt South Bioregions (TEC)

1



Tricketts Arch (Landholder supplied)

70 Tricketts Arch

IBRA subregion

Oberon

Aboriginal Country

Dharug

Credit ID

CR-235 PCT 1197 with HBT

CR-230 PCT 821 with HBT

CR-232 PCT 1100 with HBT

CR-231 PCT 963 with HBT

Contact

Sharon (Ruby) Dykes
 (02) 6335 5247 or
 0435 564 387
trickettsarch@activ8.net.au

Credits available (BAM)

Acronyms:

| | |
|------|---------------------------------|
| HBT | Hollow-bearing trees |
| OTG | Offset Trading Group |
| PCT | Plant Community Type |
| TEC | Threatened ecological community |
| BAM | Biodiversity Assessment Method |
| BBAM | BioBanking Assessment Method |

PCT 1197 with HBT

234

OTG: Tableland Basalt Forest in the Sydney Basin and South Eastern Highlands Bioregions (TEC)

PCT 821 with HBT

126

OTG: Central Gorge Dry Sclerophyll Forests less than 50%

PCT 1100 with HBT

91

OTG: Tableland Basalt Forest in the Sydney Basin and South Eastern Highlands Bioregions (TEC)

PCT 963 with HBT

38

OTG: Tableland Basalt Forest in the Sydney Basin and South Eastern Highlands Bioregions (TEC)



Tricketts Arch (Landholder supplied)

71 Tricketts Arch 2

IBRA subregion

Oberon

Aboriginal Country

Dharug

Credit ID

CR-233 PCT 1100

CR-236 PCT 1197

CR-234 PCT 1110

Contact

Sharon (Ruby) Dykes
 (02) 6335 5247 or
 0435 564 387
trickettsarch@activ8.net.au

Credits available (BAM)

Acronyms:

HBT Hollow-bearing trees
 OTG Offset Trading Group
 PCT Plant Community Type
 TEC Threatened ecological community
 BAM Biodiversity Assessment Method
 BBAM BioBanking Assessment Method

PCT 1100

36

OTG: Tableland Basalt Forest in the Sydney Basin and South Eastern Highlands Bioregions (TEC)

PCT 1197

31

OTG: Tableland Basalt Forest in the Sydney Basin and South Eastern Highlands Bioregions (TEC)

PCT 1110

4

OTG: Temperate Montane Grasslands greater than or equal to 90%



72 Jobys Hill

IBRA subregion

Peel

Aboriginal Country

Kamilaroi

Credit ID

CR-5787 PCT 1383 with HBT

Contact

George Macdonald
0414 851 302
georgem181059@gmail.com

Credits available (BBAM)

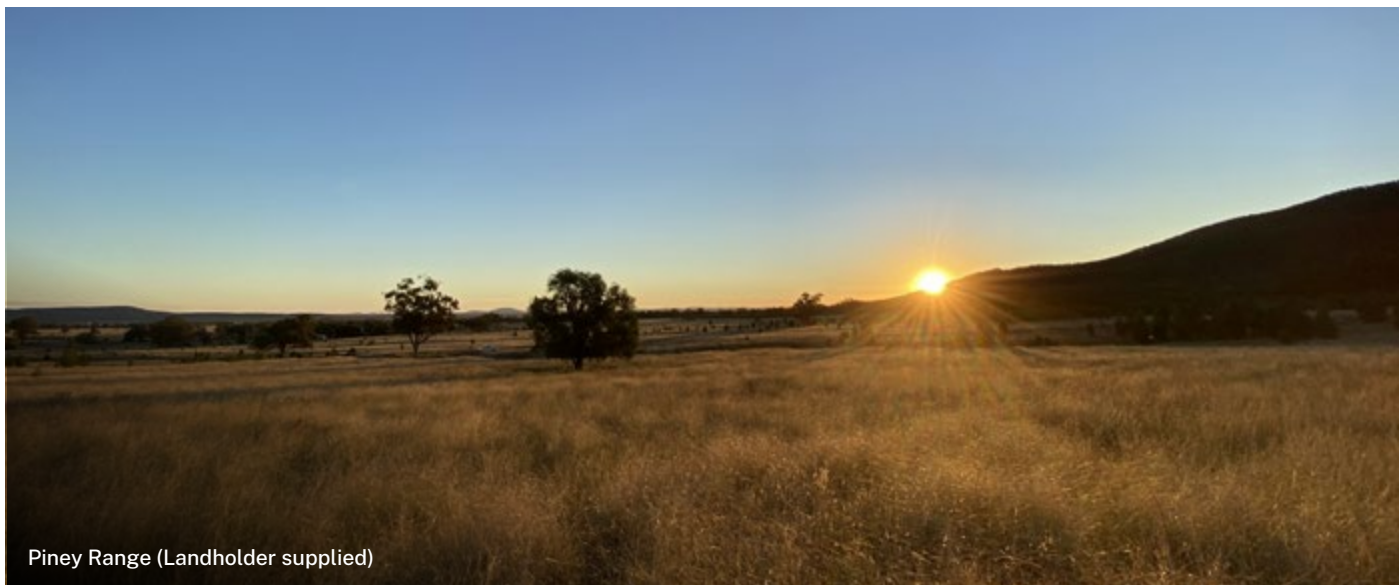
Acronyms:

| | |
|------|---------------------------------|
| HBT | Hollow-bearing trees |
| OTG | Offset Trading Group |
| PCT | Plant Community Type |
| TEC | Threatened ecological community |
| BAM | Biodiversity Assessment Method |
| BBAM | BioBanking Assessment Method |

PCT 1383 with HBT

103

OTG: White Box – Yellow Box – Blakely’s Red Gum Grassy Woodland and Derived Native Grassland in the NSW North Coast, New England Tableland, Nandewar, Brigalow Belt South, Sydney Basin, South Eastern Highlands, NSW South Western Slopes, South East Corner and Riverina Bioregions (TEC)



Piney Range (Landholder supplied)

73 Piney Range

IBRA subregion

Peel

Aboriginal Country

Kamilaroi

Credit ID

CR-212 PCT 1313 with HBT

CR-214 PCT 1308 with HBT

CR-211 PCT 1383 with HBT

CR-210 PCT 147 with HBT

Contact

Amanda Griffith
0488 224 445
agriffith@niche-eh.com

Credits available (BBAM)

Acronyms:

| | |
|------|---------------------------------|
| HBT | Hollow-bearing trees |
| OTG | Offset Trading Group |
| PCT | Plant Community Type |
| TEC | Threatened ecological community |
| BAM | Biodiversity Assessment Method |
| BBAM | BioBanking Assessment Method |

PCT 1313 with HBT

6455

OTG: Western Slopes Dry Sclerophyll Forests greater than or equal to 50% and less than 70%

PCT 1308 with HBT

1738

OTG: North-west Slopes Dry Sclerophyll Woodlands greater than or equal to 50% and less than 70%

PCT 1383 with HBT

1157

OTG: White Box – Yellow Box – Blakely’s Red Gum Grassy Woodland and Derived Native Grassland in the NSW North Coast, New England Tableland, Nandewar, Brigalow Belt South, Sydney Basin, South Eastern Highlands, NSW South Western Slopes, South East Corner and Riverina Bioregions (TEC)

PCT 147 with HBT

199

OTG: Semi-evergreen Vine Thicket in the Brigalow Belt South and Nandewar Bioregions (TEC)



74 Piney Range

IBRA subregion

Peel

Aboriginal Country

Kamilaroi

Credit ID

CR-217 PCT 1317 with HBT

CR-215 PCT 1118 with HBT

CR-216 PCT 578

CR-213 PCT 1270 with HBT

Contact

Amanda Griffith
0488 224 445
agriffith@niche-eh.com

Credits available (BBAM)

Acronyms:

| | |
|------|---------------------------------|
| HBT | Hollow-bearing trees |
| OTG | Offset Trading Group |
| PCT | Plant Community Type |
| TEC | Threatened ecological community |
| BAM | Biodiversity Assessment Method |
| BBAM | BioBanking Assessment Method |

PCT 1317 with HBT

76

OTG: North-west Slopes Dry Sclerophyll Woodlands greater than or equal to 50% and less than 70%

PCT 1118 with HBT

29

OTG: New England Grassy Woodlands greater than or equal to 70% and less than 90%

PCT 578

15

OTG: Northern Tableland Dry Sclerophyll Forests less than 50%

PCT 1270 with HBT

6

OTG: Eastern Riverine Forests less than 50%



Dry Sclerophyll Forest (Stuart Cohen/DCCEEW)

75 Binnaway

IBRA subregion

Pilliga

Aboriginal Country

Wailwan

Credit ID

Available on request

Contact

Josh Cui
 0425 451 311
cuixiaojosh@gmail.com

Credits available (BAM)

Acronyms:

- HBT Hollow-bearing trees
- OTG Offset Trading Group
- PCT Plant Community Type
- TEC Threatened ecological community
- BAM Biodiversity Assessment Method
- BBAM BioBanking Assessment Method

PCT 417 with HBT

OTG: Western Slopes Dry Sclerophyll Forests less than 50%

2521

PCT 455 with HBT

OTG: Western Slopes Dry Sclerophyll Forests more than 50% and less than 70%

548

PCT 399 with HBT

OTG: Western Slopes Dry Sclerophyll Forests less than 50%

235

PCT 401 with HBT

OTG: White Box –Yellow Box –Blakely’s Red Gum Grassy Woodland and Derived Native Grassland in the NSW North Coast, New England Tableland, Nandewar, Brigalow Belt South, Sydney Basin, South Eastern Highlands, NSW South Western Slopes, South East Corner and Riverina Bioregions (TEC)

186

PCT 381 with HBT

OTG: White Box –Yellow Box –Blakely’s Red Gum Grassy Woodland and Derived Native Grassland in the NSW North Coast, New England Tableland, Nandewar, Brigalow Belt South, Sydney Basin, South Eastern Highlands, NSW South Western Slopes, South East Corner and Riverina Bioregions (TEC)

75



76 Everleigh

IBRA subregion

Pilliga

Aboriginal Country

Wailwan

Credit ID

CR-6306 PCT 434 with HBT

CR-6302 PCT 381 with HBT

CR-6303 PCT 417 with HBT

Contact

Amanda Griffith
 0488 224 445
agriffith@niche-eh.com

Credits available (BAM)

Acronyms:

HBT Hollow-bearing trees
 OTG Offset Trading Group
 PCT Plant Community Type
 TEC Threatened ecological community
 BAM Biodiversity Assessment Method
 BBAM BioBanking Assessment Method

PCT 434 with HBT

319

OTG: White Box –Yellow Box –Blakely’s Red Gum Grassy Woodland and Derived Native Grassland in the NSW North Coast, New England Tableland, Nandewar, Brigalow Belt South, Sydney Basin, South Eastern Highlands, NSW South Western Slopes, South East Corner and Riverina Bioregions (TEC)

PCT 381 with HBT

86

OTG: White Box –Yellow Box –Blakely’s Red Gum Grassy Woodland and Derived Native Grassland in the NSW North Coast, New England Tableland, Nandewar, Brigalow Belt South, Sydney Basin, South Eastern Highlands, NSW South Western Slopes, South East Corner and Riverina Bioregions (TEC)

PCT 417 with HBT

31

OTG: Western Slopes Dry Sclerophyll Forests less than 50%



Farr Park (Landholder supplied)

77 Farr Park

IBRA subregion

Pilliga Outwash

Aboriginal Country

Kamilaroi

Credit ID

CR-19474 PCT 398 with HBT

CR-19473 PCT 88 with HBT

CR-19476 PCT 402 with HBT

CR-19472 PCT 88

CR-19477 PCT 402

CR-19475 PCT 398

Contact

Michael Spork
 0408 776 759
michael@msproperties.com.au

Credits available (BAM)

Acronyms:

HBT Hollow-bearing trees
 OTG Offset Trading Group
 PCT Plant Community Type
 TEC Threatened ecological community
 BAM Biodiversity Assessment Method
 BBAM BioBanking Assessment Method

PCT 398 with HBT OTG: Western Slopes Dry Sclerophyll Forests less than 50%

6319

PCT 88 with HBT OTG: Pilliga Outwash Dry Sclerophyll Forests less than 50%

2365

PCT 402 with HBT OTG: Western Slopes Dry Sclerophyll Forests less than 50%

708

PCT 88 OTG: Pilliga Outwash Dry Sclerophyll Forests less than 50%

110

PCT 402 OTG: Western Slopes Dry Sclerophyll Forests less than 50%

62

PCT 398 OTG: Western Slopes Dry Sclerophyll Forests less than 50%

23



Shale Sandstone Transition Forest (Steven Douglas/DCCEEW)

78 Fernhill

IBRA subregion

Sydney Basin

Aboriginal Country

Dharug

Credit ID

CR-3280 PCT 1081

CR-3274 PCT 1395 with HBT

CR-3276 PCT 1081

Contact

Daniel Williams
0427 660 581
regenbiosol@gmail.com

Credits available (BAM)

Acronyms:

HBT Hollow-bearing trees
OTG Offset Trading Group
PCT Plant Community Type
TEC Threatened ecological community
BAM Biodiversity Assessment Method
BBAM BioBanking Assessment Method

PCT 1081

125

OTG: Sydney Hinterland Dry Sclerophyll Forests less than 50%

PCT 1395 with HBT

60

OTG: Shale Sandstone Transition Forest in the Sydney Basin Bioregion (TEC)

PCT 1081

41

OTG: Sydney Hinterland Dry Sclerophyll Forests less than 50%



Picton (Landholder supplied)

79 Picton

IBRA subregion

Sydney Basin

Aboriginal Country

Dharug

Credit ID

CR-5737 PCT 850 with HBT

Contact

John Fairley
0427 660 581
johnfairley@countryvalley.com.au

Credits available (BAM)

Acronyms:

| | |
|------|---------------------------------|
| HBT | Hollow-bearing trees |
| OTG | Offset Trading Group |
| PCT | Plant Community Type |
| TEC | Threatened ecological community |
| BAM | Biodiversity Assessment Method |
| BBAM | BioBanking Assessment Method |

PCT 850 with HBT

7

OTG: Cumberland Plain Woodland in the Sydney Basin Bioregion (TEC)



Northern Hinterland Wet Sclerophyll Forests (David Croft/DCCEEW)

80 Jura Farm

IBRA subregion

Upper Hunter

Aboriginal Country

Wonnarua

Credit ID

CR-5746 PCT 1590 with HBT

CR-5744 PCT 1566 with HBT

CR-5747 PCT 1602

CR-5743 PCT 1584 with HBT

CR-5742 PCT 1541

Contact

Amanda Griffith
 0488 224 445
agriffith@niche-eh.com

Credits available (BAM)

Acronyms:

- HBT Hollow-bearing trees
- OTG Offset Trading Group
- PCT Plant Community Type
- TEC Threatened ecological community
- BAM Biodiversity Assessment Method
- BBAM BioBanking Assessment Method

PCT 1590 with HBT OTG: Hunter-Macleay Dry Sclerophyll Forests less than 50%

2361

PCT 1566 with HBT OTG: North Coast Wet Sclerophyll Forests less than 50% (TEC)

258

PCT 1602 OTG: Hunter-Macleay Dry Sclerophyll Forests more than 50% and less than 70%

220

PCT 1584 with HBT OTG: Northern Hinterland Wet Sclerophyll Forests less than 50%

117

PCT 1541 OTG: Lower Hunter Valley Dry Rainforest in the Sydney Basin and NSW North Coast Bioregions (TEC)

21



Wet Sclerophyll Forests (Martin Sullivan/DCCEEW)

81 Blue Gum

IBRA subregion

Wollemi

Aboriginal Country

Darkinjung

Credit ID

CR-7367 PCT 1255 with HBT

CR-7368 PCT 621 with HBT

CR-7369 PCT 792 with HBT

CR-7370 PCT 1504 with HBT

Contact

Veronica Harris
 0455 207 266
vero.harris77@gmail.com

Credits available (BAM)

Acronyms:

- HBT Hollow-bearing trees
- OTG Offset Trading Group
- PCT Plant Community Type
- TEC Threatened ecological community
- BAM Biodiversity Assessment Method
- BBAM BioBanking Assessment Method

PCT 1255 with HBT OTG: Sydney Hinterland Dry Sclerophyll Forests less than 50%

1878

PCT 621 with HBT OTG: Sydney Hinterland Dry Sclerophyll Forests more than 50% and less than 70%

1759

PCT 792 with HBT OTG: Southern Tableland Wet Sclerophyll Forests more than 50% and less than 70%

1079

PCT 1504 with HBT OTG: North Coast Wet Sclerophyll Forests more than 70% and less than 90%

761



Dry Sclerophyll Forest (Stuart Cohen/DCCEEW)

82 Clearview

IBRA subregion

Wollemi

Aboriginal Country

Darkinjung

Credit ID

CR-5472 PCT 434 with HBT

CR-5473 PCT 381 with HBT

Contact

Veronica Harris
0455 207 266
vero.harris77@gmail.com

Credits available (BAM)

Acronyms:

| | |
|------|---------------------------------|
| HBT | Hollow-bearing trees |
| OTG | Offset Trading Group |
| PCT | Plant Community Type |
| TEC | Threatened ecological community |
| BAM | Biodiversity Assessment Method |
| BBAM | BioBanking Assessment Method |

PCT 1327 with HBT

OTG: Sydney Hinterland Dry Sclerophyll Forests less than 50%

2836

PCT 1328 with HBT

OTG: Sydney Hinterland Dry Sclerophyll Forests less than 50%

372



Winmalee (Landholder supplied)

83 Winmalee

IBRA subregion

Wollemi

Aboriginal Country

Dharug

Credit ID

Available on request

Contact

Stephanie Forsmann
0409 659 512
cs2@sydneywater.com.au

Credits available (BAM)

Acronyms:

HBT Hollow-bearing trees
OTG Offset Trading Group
PCT Plant Community Type
TEC Threatened ecological community
BAM Biodiversity Assessment Method
BBAM BioBanking Assessment Method

PCT 1081 with HBT OTG: Sydney Hinterland Dry Sclerophyll Forests less than 50%

79

PCT 1083 with HBT OTG: Sydney Coastal Dry Sclerophyll Forests less than 50%

77

PCT 1181 with HBT OTG: Sydney Coastal Dry Sclerophyll Forests less than 50%

8



84 Blue Haven Wetland

IBRA subregion

Wyong

Aboriginal Country

Kuring-gai

Credit ID

CR-19519 PCT 1719

CR-19521 PCT 1718

CR-19520 PCT 1636 with HBT

CR-19518 PCT 1730

Contact

Rochelle Lawson
0429 124 316

rochelle.lawson@centralcoast.nsw.gov.au

Credits available (BAM)

Acronyms:

| | |
|------|---------------------------------|
| HBT | Hollow-bearing trees |
| OTG | Offset Trading Group |
| PCT | Plant Community Type |
| TEC | Threatened ecological community |
| BAM | Biodiversity Assessment Method |
| BBAM | BioBanking Assessment Method |

PCT 1719

30

OTG: Swamp Sclerophyll Forest on Coastal Floodplains of the New South Wales North Coast, Sydney Basin and South East Corner Bioregions (TEC)

PCT 1718

28

OTG: Swamp Sclerophyll Forest on Coastal Floodplains of the New South Wales North Coast, Sydney Basin and South East Corner Bioregions (TEC)

PCT 1636 with HBT

17

OTG: Kincumber Scribbly Gum Forest in the Sydney Basin Bioregion (TEC)

PCT 1730

17

OTG: Swamp Sclerophyll Forest on Coastal Floodplains of the New South Wales North Coast, Sydney Basin and South East Corner Bioregions (TEC)



Sydney Freshwater Wetlands (Ian Brown/DCCEEW)

85 Tumbi Umbi Wetland 1

IBRA subregion

Wyang

Aboriginal Country

Kuring-gai

Credit ID

CR-21294 PCT 1718 with HBT

CR-21297 PCT 1649 with HBT

CR-21301 PCT 1716

CR-21304 PCT 1546 with HBT

CR-21298 PCT 1649

CR-21306 PCT 1638

Contact

Rochelle Lawson

0429 124 316

[rochelle.lawson@centralcoast.](mailto:rochelle.lawson@centralcoast.nsw.gov.au)

nsw.gov.au

Credits available (BAM)

Acronyms:

| | |
|------|---------------------------------|
| HBT | Hollow-bearing trees |
| OTG | Offset Trading Group |
| PCT | Plant Community Type |
| TEC | Threatened ecological community |
| BAM | Biodiversity Assessment Method |
| BBAM | BioBanking Assessment Method |

PCT 1718 with HBT

134

OTG: Swamp Sclerophyll Forest on Coastal Floodplains of the New South Wales North Coast, Sydney Basin and South East Corner Bioregions (TEC)

PCT 1649 with HBT

49

OTG: Swamp Sclerophyll Forest on Coastal Floodplains of the New South Wales North Coast, Sydney Basin and South East Corner Bioregions (TEC)

PCT 1716

38

OTG: Swamp Sclerophyll Forest on Coastal Floodplains of the New South Wales North Coast, Sydney Basin and South East Corner Bioregions (TEC)

PCT 1546 with HBT

24

OTG: Northern Tableland Wet Sclerophyll Forests less than 50%

PCT 1649

13

OTG: Coastal Swamp Forests less than 50%

PCT 1638

12

OTG: Sydney Coastal Dry Sclerophyll Forests greater than or equal to 50% and less than 70%



Sydney Freshwater Wetlands (Ian Brown/DCCEEW)

86 Tumbi Umbi Wetland 2

IBRA subregion

Wyang

Aboriginal Country

Kuring-gai

Credit ID

CR-21296 PCT 1730

CR-21302 PCT 1723 with HBT

CR-21293 PCT 1722

CR-21303 PCT 1723

Contact

Rochelle Lawson
0429 124 316

rochelle.lawson@centralcoast.nsw.gov.au

Credits available (BAM)

Acronyms:

| | |
|------|---------------------------------|
| HBT | Hollow-bearing trees |
| OTG | Offset Trading Group |
| PCT | Plant Community Type |
| TEC | Threatened ecological community |
| BAM | Biodiversity Assessment Method |
| BBAM | BioBanking Assessment Method |

PCT 1730

40

OTG: Swamp Sclerophyll Forest on Coastal Floodplains of the New South Wales North Coast, Sydney Basin and South East Corner Bioregions (TEC)

PCT 1723 with HBT

26

OTG: Swamp Sclerophyll Forest on Coastal Floodplains of the New South Wales North Coast, Sydney Basin and South East Corner Bioregions (TEC)

PCT 1722

5

OTG: Swamp Sclerophyll Forest on Coastal Floodplains of the New South Wales North Coast, Sydney Basin and South East Corner Bioregions (TEC)

PCT 1723

3

OTG: Swamp Sclerophyll Forest on Coastal Floodplains of the New South Wales North Coast, Sydney Basin and South East Corner Bioregions (TEC)



Swamp Sclerophyll Forest (Steven Douglas/DCCEEW)

87 Tumbi Umbi Wetland 3

IBRA subregion

Wyong

Aboriginal Country

Kuring-gai

Credit ID

CR-21300 PCT 1716 with HBT

CR-21295 PCT 1718

CR-21308 PCT 1232

Contact

Rochelle Lawson
0429 124 316

rochelle.lawson@centralcoast.nsw.gov.au

Credits available (BAM)

Acronyms:

| | |
|------|---------------------------------|
| HBT | Hollow-bearing trees |
| OTG | Offset Trading Group |
| PCT | Plant Community Type |
| TEC | Threatened ecological community |
| BAM | Biodiversity Assessment Method |
| BBAM | BioBanking Assessment Method |

PCT 1716 with HBT

11

OTG: Swamp Sclerophyll Forest on Coastal Floodplains of the New South Wales North Coast, Sydney Basin and South East Corner Bioregions (TEC)

PCT 1718

2

OTG: Swamp Sclerophyll Forest on Coastal Floodplains of the New South Wales North Coast, Sydney Basin and South East Corner Bioregions (TEC)

PCT 1232

1

OTG: Swamp Sclerophyll Forest on Coastal Floodplains of the New South Wales North Coast, Sydney Basin and South East Corner Bioregions (TEC)



Wet Sclerophyll Forest (Jackie Miles/DCCEEW)

88 Garland Valley

IBRA subregion

Yengo

Aboriginal Country

Darkinjung

Credit ID

CR-6419 PCT 1255 with HBT

CR-6417 PCT 1572 with HBT

CR-6421 PCT 1540 with HBT

Contact

Veronica Harris
0455 207 266
vero.harris77@gmail.com

Credits available (BAM)

Acronyms:

HBT Hollow-bearing trees
OTG Offset Trading Group
PCT Plant Community Type
TEC Threatened ecological community
BAM Biodiversity Assessment Method
BBAM BioBanking Assessment Method

PCT 1255 with HBT OTG: Sydney Hinterland Dry Sclerophyll Forests less than 50%

1124

PCT 1572 with HBT OTG: North Coast Wet Sclerophyll Forests less than 50%

37

PCT 1540 with HBT OTG: Dry Rainforests less than 50%

1



Hawkesbury (Landholder supplied)

89 Hawkesbury

IBRA subregion

Yengo

Aboriginal Country

Dharug

Credit ID

CR-3295 PCT 1181 with HBT

CR-3293 PCT 1083 with HBT

CR-3296 PCT 1237 with HBT

CR-3289 PCT 978 with HBT

Contact

Mark Dixon
 (02) 4566 8348
mark@dixonsand.com.au

Credits available (BAM)

Acronyms:

HBT Hollow-bearing trees
 OTG Offset Trading Group
 PCT Plant Community Type
 TEC Threatened ecological community
 BAM Biodiversity Assessment Method
 BBAM BioBanking Assessment Method

PCT 1181 with HBT OTG: Sydney Coastal Dry Sclerophyll Forests less than 50%

131

PCT 1083 with HBT OTG: Sydney Coastal Dry Sclerophyll Forests less than 50%

50

PCT 1237 with HBT OTG: Blue Gum High Forest in the Sydney Basin Bioregion (TEC)

14

PCT 978 with HBT OTG: Coastal Upland Swamp in the Sydney Basin Bioregion (TEC)

6



Sydney Hinterland Dry Sclerophyll Forest (Landholder supplied)

90 Ten Mile Hollow

IBRA subregion

Yengo

Aboriginal Country

Dharug

Credit ID

CR-27661 PCT 3603 with HBT

CR-27663 PCT 3230 with HBT

CR-27665 PCT 3924 with HBT

CR-27662 PCT 3617 with HBT

CR-27664 PCT 3230

Contact

Ajahn Khemavaro
0480 105 070
wbdoffice@gmail.com

Credits available (BAM)

Acronyms:

| | |
|------|---------------------------------|
| HBT | Hollow-bearing trees |
| OTG | Offset Trading Group |
| PCT | Plant Community Type |
| TEC | Threatened ecological community |
| BAM | Biodiversity Assessment Method |
| BBAM | BioBanking Assessment Method |

PCT 3603 with HBT

OTG: Sydney Hinterland Dry Sclerophyll Forests less than 50%

208

PCT 3230 with HBT

OTG: Northern Hinterland Wet Sclerophyll Forests less than 50%

113

PCT 3924 with HBT

OTG: Coastal Upland Swamp in the Sydney Basin Bioregion (TEC)

46

PCT 3617 with HBT

OTG: Sydney Hinterland Dry Sclerophyll Forests less than 50%

44

PCT 3230

OTG: Northern Hinterland Wet Sclerophyll Forests less than 50%

4

Index | Ecosystem credits

TEC = Threatened ecological community

| | |
|---|-------------|
| A | |
| Artesian Springs Ecological Community in the Great Artesian Basin (TEC) | 71 |
| B | |
| Blue Mountains Basalt Forest in the Sydney Basin Bioregion (TEC) | 131 |
| Blue Mountains Shale Cap Forest in the Sydney Basin Bioregion (TEC) | 68, 69 |
| Brigalow within the Brigalow Belt South, Nandewar and Darling Riverine Plains Bioregions (TEC) | 71 |
| C | |
| Carbeen Open Forest Community in the Darling Riverine Plains and Brigalow Belt South Bioregions (TEC) | 71, 72, 137 |
| Carex Sedgeland of the New England Tableland, Nandewar, Brigalow Belt South and NSW North Coast Bioregions (TEC) | 90 |
| Central Gorge Dry Sclerophyll Forests less than 50% | 138 |
| Central Hunter Grey Box – Ironbark Woodland in the New South Wales North Coast and Sydney Basin Bioregions (TEC) | 94, 100 |
| Clarence Dry Sclerophyll Forests greater than or equal to 50% and less than 70% | 77 |
| Clarence Dry Sclerophyll Forests less than 50% | 74, 77 |
| Coastal Dune Dry Sclerophyll Forests less than 50% | 114 |
| Coastal Floodplain Wetlands greater than or equal to 70% and less than 90% | 84 |
| Coastal Floodplain Wetlands less than 50% | 111 |
| Coastal Freshwater Lagoons greater than or equal to 70% and less than 90% | 125 |
| Coastal Freshwater Lagoons less than 50% | 76 |
| Coastal Heath Swamps greater than or equal to 70% and less than 90% | 79 |
| Coastal Swamp Forests greater than or equal to 50% and less than 70% | 111 |
| Coastal Swamp Forests greater than or equal to 70% and less than 90% | 75, 114 |
| Coastal Swamp Forests less than 50% | 153 |
| Coastal Upland Swamp in the Sydney Basin Bioregion (TEC) | 157, 158 |
| Coastal Valley Grassy Woodlands greater than or equal to 50% and less than 70% | 132 |
| Coastal Valley Grassy Woodlands greater than or equal to 70% and less than 90% | 124, 147 |
| Coastal Valley Grassy Woodlands greater than or equal to 90% | 88 |
| Coolibah-Black Box Woodland in the Darling Riverine Plains, Brigalow Belt South, Cobar Peneplain and Mulga Lands Bioregions (TEC) | 71, 72, 73 |
| Cumberland Dry Sclerophyll Forests greater than or equal to 90% | 85, 88 |
| Cumberland Plain Woodland in the Sydney Basin Bioregion (TEC) | 87 |

Index | Ecosystem credits continued

TEC = Threatened ecological community

D

| | |
|--|-----------------------|
| Dry Rainforests greater than or equal to 90% | 101 |
| Dry Rainforests less than 50% | 83, 95, 124, 132, 156 |

E

| | |
|---|-----|
| Eastern Riverine Forests greater than or equal to 70% and less than 90% | 99 |
| Eastern Riverine Forests less than 50% | 123 |

F

| | |
|--|----|
| Floodplain Transition Woodlands greater than or equal to 70% and less than 90% | 73 |
| Freshwater Wetlands of Coastal Floodplains of NSW North Coast, Sydney Basin and South East Corner Bioregions (TEC) | 74 |
| Freshwater Wetlands on Coastal Floodplains of NSW North Coast, Sydney Basin and South East Corner Bioregions (TEC) | 75 |
| Freshwater Wetlands on Coastal Floodplains of the New South Wales North Coast, Sydney Basin and South East Corner Bioregions (TEC) | 83 |

H

| | |
|--|----------|
| Howell Shrublands in the New England Tableland and Nandewar Bioregions (TEC) | 89 |
| Hunter-Macleay Dry Sclerophyll Forests less than 50% | 115, 116 |
| Hunter Valley Foothills Slaty Gum Woodland in the Sydney Basin Bioregion (TEC) | 100 |
| Hunter Valley Weeping Myall Woodland in the Sydney Basin Bioregion (TEC) | 100 |

I

| | |
|---|----------|
| Inland Floodplain Swamps greater than or equal to 50% and less than 70% | 72 |
| Inland Grey Box Woodland in the Riverina, NSW South Western Slopes, Cobar Penneplain, Nandewar and Brigalow Belt South Bioregions (TEC) | 78 |
| Inland Riverine Forests less than 50% | 121 |
| Inland Rocky Hill Woodlands less than 50% | 108, 110 |

K

| | |
|---|-----|
| Kincumber Scribbly Gum Forest in the Sydney Basin Bioregion (TEC) | 152 |
|---|-----|

L

| | |
|---|----------|
| Lower Hunter Valley Dry Rainforest in the Sydney Basin and NSW North Coast Bioregions (TEC) | 115 |
| Lowland Rainforest on Floodplain in NSW North Coast Bioregion (TEC) | 112, 113 |
| Lowland Rainforest on Floodplain in the New South Wales North Coast Bioregion (TEC) | 116 |

M

| | |
|--|------------|
| Moist Shale Woodland in the Sydney Basin Bioregion (TEC) | 82, 84, 86 |
| Monaro Tableland Cool Temperate Grassy Woodland in the South Eastern Highlands Bioregion (TEC) | 119 |

Index | Ecosystem credits

TEC = Threatened ecological community

| | |
|---|---|
| Montane Bogs and Fens greater than or equal to 50% and less than 70% | 128 |
| Montane Peatlands and Swamps of the New England Tableland, NSW North Coast, Sydney Basin, South East Corner, South Eastern Highlands and Australian Alps bioregions (TEC) | 120 |
| Myall Woodland in the Darling Riverine Plains, Brigalow Belt South, Cobar Peneplain, Murray-Darling Depression, Riverina and NSW South Western Slopes bioregions (TEC) | 71 |
| N | |
| New England Grassy Woodlands greater than or equal to 70% and less than 90% | 142 |
| Newnes Plateau Shrub Swamp in the Sydney Basin Bioregion | 120 |
| North Coast Dry Sclerophyll Forests less than 50% | 75 |
| North Coast Wet Sclerophyll Forests less than 50% | 75, 83, 90, 101, 112, 113, 116, 117, 118, 119, 120, 123, 124, 156 |
| North Coast Wet Sclerophyll Forests more than 50% and less than 70% | 117 |
| Northern Gorge Dry Sclerophyll Forests less than 50% | 123, 132 |
| Northern Hinterland Wet Sclerophyll Forests less than 50% | 112, 115, 116, 117, 123, 124, 158 |
| Northern Montane Heaths greater than or equal to 70% and less than 90% | 92 |
| Northern Tableland Dry Sclerophyll Forests greater than or equal to 50% and less than 70% | 91, 92, 93 |
| Northern Tableland Dry Sclerophyll Forests less than 50% | 89, 91, 142 |
| Northern Tableland Wet Sclerophyll Forests less than 50% | 123, 153 |
| Northern Warm Temperate Rainforests less than 50% | 118, 123 |
| North-west Floodplain Woodlands greater than or equal to 70% and less than 90% | 72 |
| North-west Slopes Dry Sclerophyll Woodlands greater than or equal to 50% and less than 70% | 100, 136, 137, 141, 142 |
| North-west Slopes Dry Sclerophyll Woodlands greater than or equal to 70% and less than 90% | 91, 92, 93 |
| North-west Slopes Dry Sclerophyll Woodlands less than 50% | 94, 136 |
| P | |
| Pilliga Outwash Dry Sclerophyll Forests less than 50% | 145 |
| R | |
| Ribbon Gum-Mountain Gum-Snow Gum Grassy Forest/Woodland of the New England Tableland Bioregion (TEC) | 96 |
| River Flat Eucalypt Forest on Coastal Floodplains of NSW North Coast, Sydney Basin and South East Corner Bioregions (TEC) | 68, 69 |
| S | |
| Semi-arid Floodplain Grasslands greater than or equal to 50% and less than 70% | 72 |
| Semi-arid Floodplain Grasslands greater than or equal to 70% and less than 90% | 72 |

Index | Ecosystem credits continued

TEC = Threatened ecological community

| | |
|---|---|
| Semi-evergreen Vine Thicket in the Brigalow Belt South and Nandewar Bioregions (TEC) | 136, 141 |
| Shale Sandstone Transition Forest in the Sydney Basin Bioregion (TEC) | 68, 69, 146 |
| Southern Lowland Wet Sclerophyll Forests less than 50% | 111 |
| Southern Tableland Dry Sclerophyll Forests greater than or equal to 50% and less than 70% | 97, 98, 126, 127, 128 |
| Southern Tableland Dry Sclerophyll Forests less than 50% | 119, 120, 126, 129 |
| Southern Tableland Wet Sclerophyll Forests more than 50% and less than 70% | 149 |
| Subalpine Woodlands greater than or equal to 50% and less than 70% | 120 |
| Subalpine Woodlands greater than or equal to 90% | 120 |
| Subalpine Woodlands less than 50% | 119 |
| Subtropical Coastal Floodplain Forest of NSW North Coast Bioregion (TEC) | 74, 112 |
| Subtropical Coastal Floodplain Forest of the New South Wales North Coast Bioregion (TEC) | 77, 79 |
| Swamp Oak Floodplain Forest of NSW North Coast, Sydney Basin and South East Corner Bioregions (TEC) | 125 |
| Swamp Sclerophyll Forest on Coastal Floodplains of NSW North Coast, Sydney Basin and South East Corner Bioregions (TEC) | 75, 125 |
| Swamp Sclerophyll Forest on Coastal Floodplains of the New South Wales North Coast, Sydney Basin and South East Corner Bioregions (TEC) | 77, 79, 152, 153, 154, 155 |
| Sydney Coastal Dry Sclerophyll Forests greater than or equal to 50% and less than 70% | 153 |
| Sydney Coastal Dry Sclerophyll Forests less than 50% | 81, 151, 157 |
| Sydney Hinterland Dry Sclerophyll Forests less than 50% | 81, 95, 146, 147, 149, 150, 151, 156, 158 |
| Sydney Hinterland Dry Sclerophyll Forests more than 50% and less than 70% | 149 |
| Sydney Sand Flats Dry Sclerophyll Forests greater than or equal to 50% and less than 70% | 83 |
| T | |
| Tableland Basalt Forest in the Sydney Basin and South Eastern Highlands Bioregions (TEC) | 138, 139 |
| Tableland Clay Grassy Woodlands greater than or equal to 90% | 119 |
| Temperate Montane Grasslands greater than or equal to 50% and less than 70% | 133, 134 |
| Temperate Montane Grasslands greater than or equal to 90% | 139 |
| U | |
| Upland Wetlands of the Drainage Divide of the New England Tableland Bioregion (TEC) | 142 |
| Upper Riverina Dry Sclerophyll Forests greater than or equal to 50% and less than 70% | 97, 98 |

Index | Ecosystem credits

TEC = Threatened ecological community

| | |
|---|---|
| Upper Riverina Dry Sclerophyll Forests greater than or equal to 90% | 102, 103 |
| Upper Riverina Dry Sclerophyll Forests less than 50% | 102, 103 |
| W | |
| Wallum Sand Heaths greater than or equal to 70% and less than 90% | 79 |
| Western Slopes Dry Sclerophyll Forests greater than or equal to 50% and less than 70% | 105, 106, 108, 137, 141 |
| Western Slopes Dry Sclerophyll Forests greater than or equal to 70% and less than 90% | 102, 103 |
| Western Slopes Dry Sclerophyll Forests less than 50% | 70, 94, 107, 109, 136, 137, 143, 144, 145, 148 |
| Western Slopes Dry Sclerophyll Forests more than 50% and less than 70% | 143 |
| Western Slopes Grassy Woodlands greater than or equal to 50% and less than 70% | 103, 104 |
| Western Slopes Grassy Woodlands greater than or equal to 70% and less than 90% | 108, 109 |
| Western Sydney Dry Rainforest in the Sydney Basin Bioregion (TEC) | 82, 86, 87 |
| White Box – Yellow Box – Blakely’s Red Gum Grassy Woodland and Derived Native Grassland in the NSW North Coast, New England Tableland, Nandewar, Brigalow Belt South, Sydney Basin, South Eastern Highlands, NSW South Western Slopes, South East Corner and Riverina Bioregion (TEC) | 70, 91, 92, 94, 97, 103, 104, 105, 106, 107, 109, 122, 126, 127, 128, 130, 133, 134, 136, 140, 141, 143, 144, 148 |
| Y | |
| Yetman Dry Sclerophyll Forests less than 50% | 137 |

Biodiversity Credits Supply Fund

The supply fund provides another way to buy and sell credits.

Learn more about the supply fund by:

- visiting the website at Biodiversity Credits Supply Fund
- emailing SupplyFund@environment.nsw.gov.au



**Photos:**

Cover photo: Brush-tailed rock-wallaby, *Petrogale penicillata* (Jenolan Caves/DCCEEW)
Page 3: Black-eyed Susan, *Tetradthea thymifolia* (Alan Fairley/DCCEEW)
Page 4: Illawarra Subtropical Rainforest in the Sydney Basin Bioregion (Jedda Lemmon/DCCEEW)
Page 6: Koala, *Phascolarctos cinereus* (Steve Anyon-Smith/DCCEEW)
Page 7: Small purple-pea, *Swainsona recta* (Alex Pike/DCCEEW)
Page 9: Myall Downs (Landholder supplied)
Page 10: Piney Range (Landholder supplied)
Page 11: Everleigh (Landholder supplied)
Page 12: Craigend (Landholder supplied)
Page 13: Heatherbrae (Landholder supplied)
Page 14: Regent Parrot (eastern subspecies), *Polytelis anthopeplus monarchoide* (Tom Hunt/DCCEEW)
Page 67: Platypus Pool walking track (John Smith/DCCEEW)
Page 164: *Pimelea bracteata* (Genevieve Wright/DCCEEW)
Back cover: Leafless indigo, *Indigofera efoliata* (Jessica Peterie/DCCEEW)

This publication, icons, template and/or guideline has been developed by the EH-DCCEEW Brand and Design team.

All content within is the copyright of the Department of Climate Change, Energy, the Environment and Water.

© 2024 State of NSW and Department of Climate Change, Energy, the Environment and Water (DCCEEW)

With the exception of photographs, the State of NSW and Department of Climate Change, Energy, the Environment and Water (the department) are pleased to allow this material to be reproduced in whole or in part for educational and non-commercial use, provided the meaning is unchanged and its source, publisher and authorship are acknowledged. Specific permission is required to reproduce photographs.

Learn more about our copyright and disclaimer at www.environment.nsw.gov.au/copyright

Published by:

Environment and Heritage
Department of Climate Change, Energy, the Environment and Water
Locked Bag 5022, Parramatta NSW 2124
Phone: +61 2 9995 5000 (switchboard)
Phone: 1300 361 967 (Environment enquiries)
TTY users: phone 133 677, then ask for 1300 361 967
Speak and listen users: phone 1300 555 727, then ask for 1300 361 967
Email: info@environment.nsw.gov.au
Website: www.environment.nsw.gov.au

Report pollution and environmental incidents
Environment Line: 131 555 (NSW only) or info@environment.nsw.gov.au
See also www.environment.nsw.gov.au

ISSN 2981-9172
EH 2024/0099
March 2024