

Hunter Region Ben Halls Gap National Park Fire Management Strategy (Type 2) 2005

Sheet 1 of 1

This strategy should be used in conjunction with aerial photography and field reconnaissance during incidents and development of incident action plans.

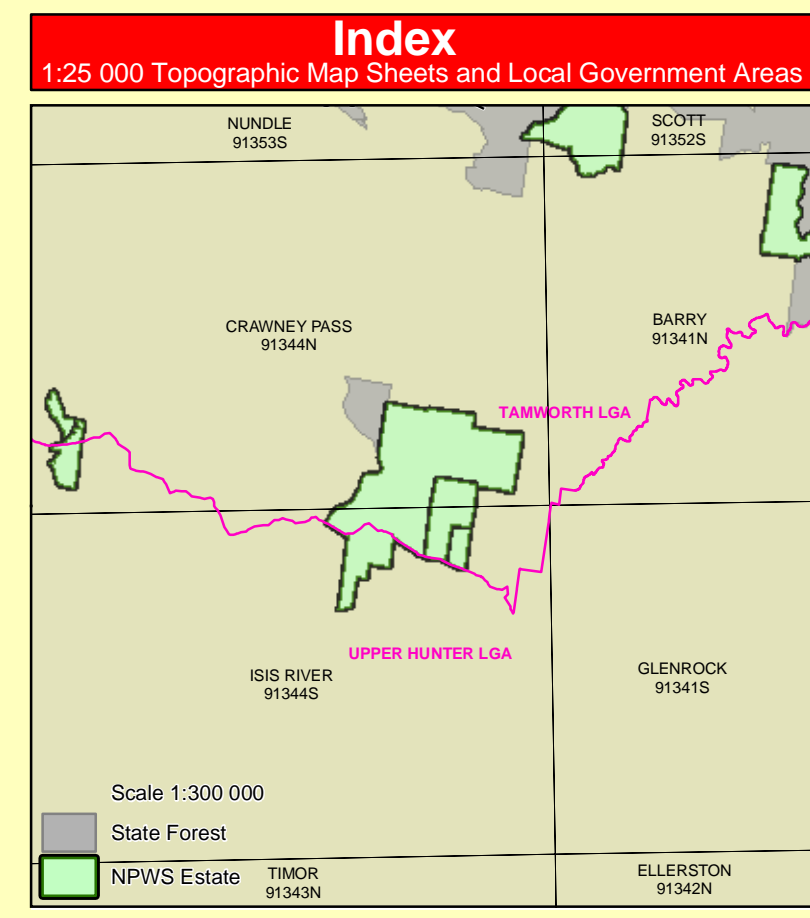
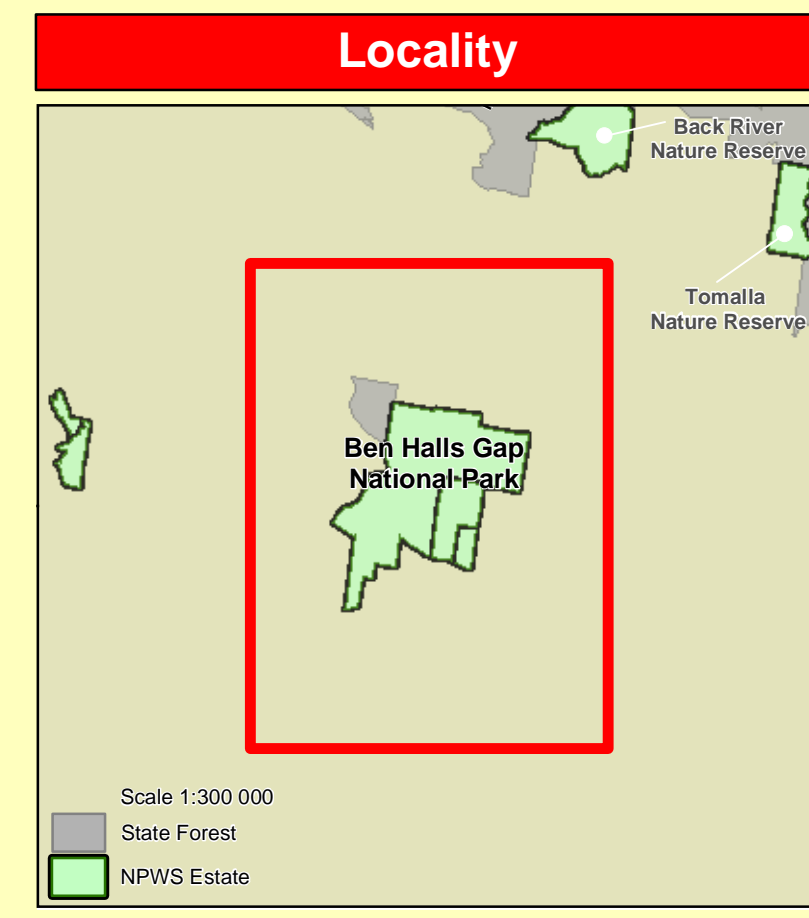
These data are not guaranteed to be free from error or omission. The NSW National Parks and Wildlife and its employees disclaim liability for any loss or damage, or the information in the data and any consequences of such loss or damage. This document is copyright. Apart from any first dealing for the purposes of study, research, criticism or review, as permitted under the Copyright Act, no part may be reproduced by any process without written permission. The NSW National Parks and Wildlife Service is part of the Department of Environment and Conservation. Published by the Department of Environment and Conservation (NSW), June 2005.

ISBN: 1 7437 823 0 DEC Number: 2006/59 Last Updated: 13/03/07

This strategy is a relevant plan under Section 38 (4) and Section 44 (3) of Rural Fires Act 1997.

Endorsed by: _____ Date: / /

Director Northern, Parks & Wildlife Division



Contact Information

Agency	Position / Location	Phone
NPWS	Hunter Region Day Officer / After Hours	0423 144 880 016 301161 - Ask for Hunter Region Day Officer (during fire season only)
	Upper Hunter Area Manager	0540 2306 / 0429 144 876
	Fire Management Officer	4984 8206 / 0429 144 870
	Regional Operations Coordinator	4984 8212 / 0429 144 872
	Upper Hunter Area Office	0540 2300 / (fax) 0545 9475
RFS	Hunter Region Office	4984 8200 / (fax) 0481 9411
	Liverpool Range Zone Fire Control	0747 1493 / (fax) 0747 1489 249 number 18000 81 66 07627641
NSW Fire Brigade	Emergency	000
	Newcastle Fire Control District (24hr)	4929 7177 / (fax) 4927 2580
SES	Emergency	000
	Upper Hunter Division Murrumbidgee Unit	0546 6080 / (fax) 0572 2312 07620711
Police	Emergency	000
	Murrumbidgee (Diverters if needed)	0769 3344
Ambulance	Emergency	000
	Bookings	131 233
Hospital	Murrumbidgee (Community Health)	0546 6106 07677739
	Tamworth Base Hospital	131 233
DOP	Emergency	000
	Bookings	0412 25830 (AHD)
DPI - Forests	Hunter Region Office Maitland	4931 6666 / (fax) 4927 8030
	Walcha Management Area	0777 2511 / (fax) 0777 2179
Council	Nassau Shire Council	0780 2305 / (fax) 0789 3114
	Local Aboriginal Land Council	Wusunah (Mawelberrak) Nungaroo (Quarinah)

Operational Guidelines (continued)

Refer to current Fire Management Manual (updated annually).
Brief all personnel involved in suppression operations on the following issues:

Resources

Historic Heritage Management (NPWS FMM 4.10)

IS4

IS5

IS6

IS7

Threatened Fauna Management (NPWS FMM 1.2 & 5.2)

FA1

FA2

FA3

FA4

FA5

FA6

FA7

FA8

Threatened Flora Management (NPWS FMM 4.12)

FL1

FL2

FL3

FL4

FL5

Threatened Property

Operational Guidelines (continued)

Refer to current Fire Management Manual (updated annually).
Brief all personnel involved in suppression operations on the following issues:

General

Aerial Water Bombing (NPWS FMM 4.4 & NSW Fire Agencies Aviation SOP/02 / NPWS Guidelines for Effective Aircraft Management)

Aerial Ignition (NPWS FMM 4.2.20 & 4.4 / NSW Fire Agencies Aviation SOP/02-4 / NPWS Guidelines for Effective Aircraft Management)

Backburning (NPWS FMM 4.8)

Command & Control (NPWS FMM 4.2)

Fire Suppression Chemicals (NPWS FMM 4.2.20 & 4.9)

Containment Lines (NPWS FMM 2.2 & 3.9)

Operational Guidelines (continued)

Refer to current Fire Management Manual (updated annually).
Brief all personnel involved in suppression operations on the following issues:

General

Earthmoving Equipment (NPWS FMM 4.2.20 & 4.3)

Fire Advantage Recording (NPWS FMM 5.1)

Smoke Management (NPWS FMM 3.4)

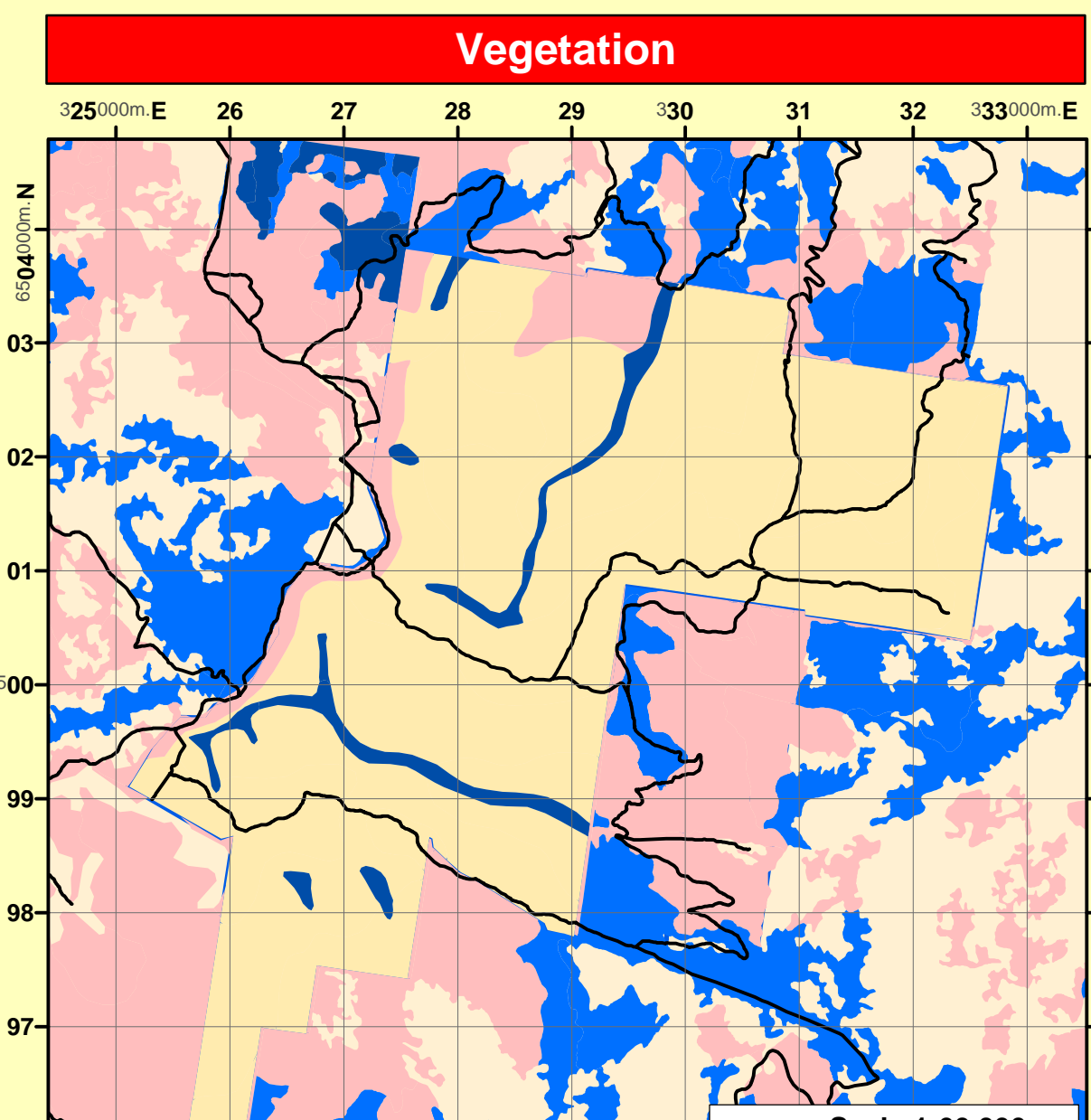
Visitor Management (NPWS FMM 3.6 & 4.13)

Wildfires

Prescribed Burning (NPWS Fire Management Manual 4.7)

Current FDR

Forecast FDR



Operational Guidelines

Refer to current Fire Management Manual (updated annually).
Brief all personnel involved in suppression operations on the following issues:

Resources

Aboriginal Cultural Heritage Site Management (NPWS FMM 4.11)

A1

A2

A3

Historic Heritage Management (NPWS FMM 4.10)

IS1

IS2

IS3

Operational Guidelines (continued)

Refer to current Fire Management Manual (updated annually).
Brief all personnel involved in suppression operations on the following issues:

General

Earthmoving Equipment (NPWS FMM 4.2.20 & 4.3)

Fire Advantage Recording (NPWS FMM 5.1)

Smoke Management (NPWS FMM 3.4)

Visitor Management (NPWS FMM 3.6 & 4.13)

Operational Guidelines (continued)

Refer to current Fire Management Manual (updated annually).
Brief all personnel involved in suppression operations on the following issues:

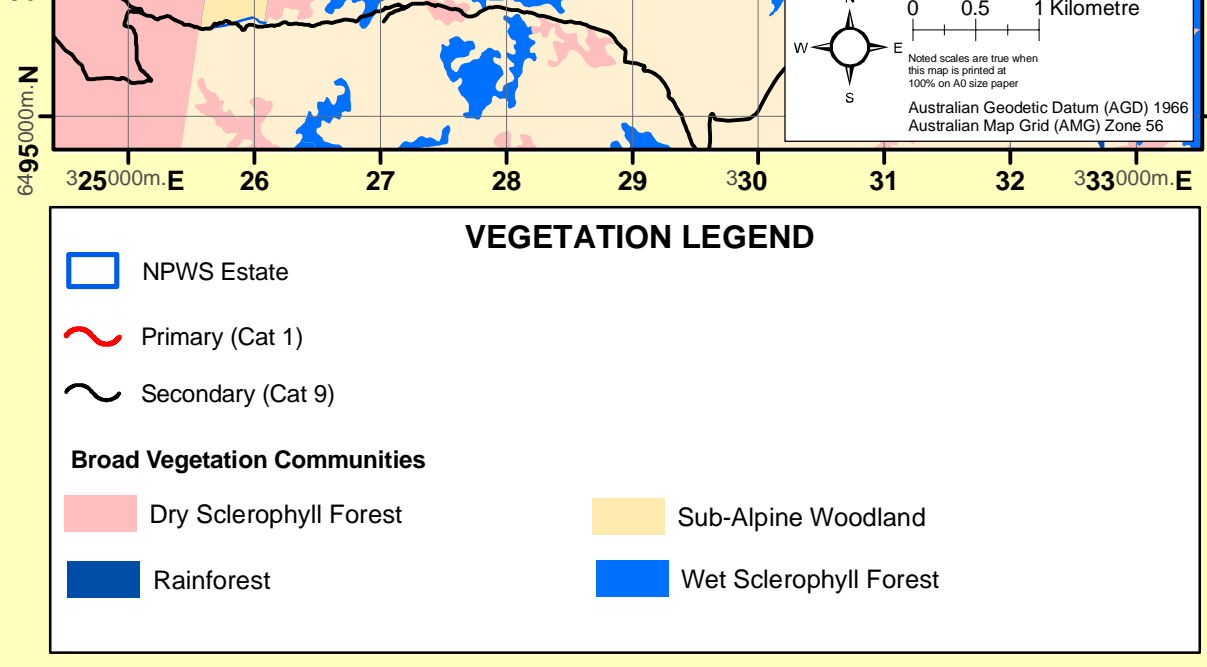
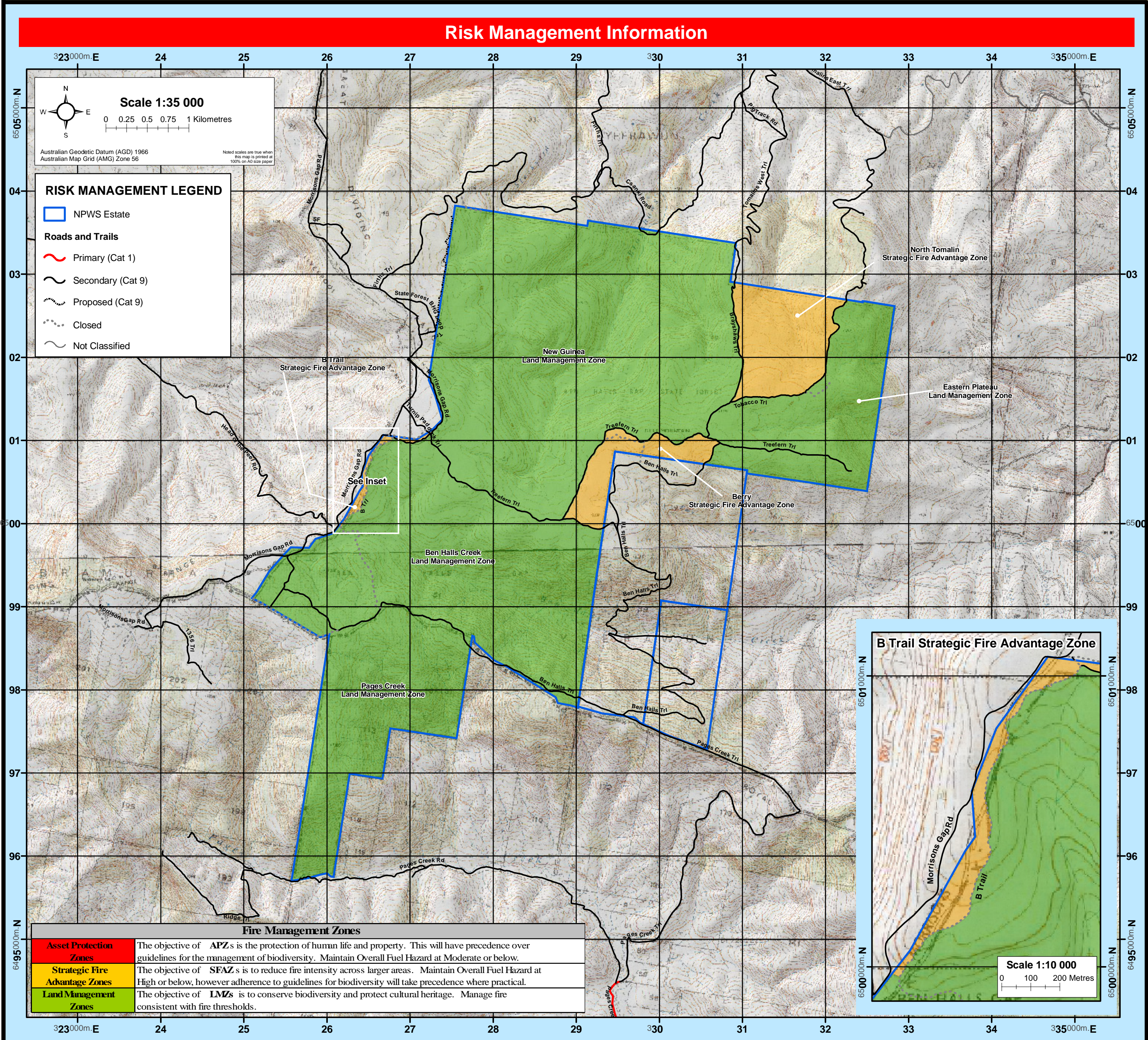
General

Earthmoving Equipment (NPWS FMM 4.2.20 & 4.3)

Fire Advantage Recording (NPWS FMM 5.1)

Smoke Management (NPWS FMM 3.4)

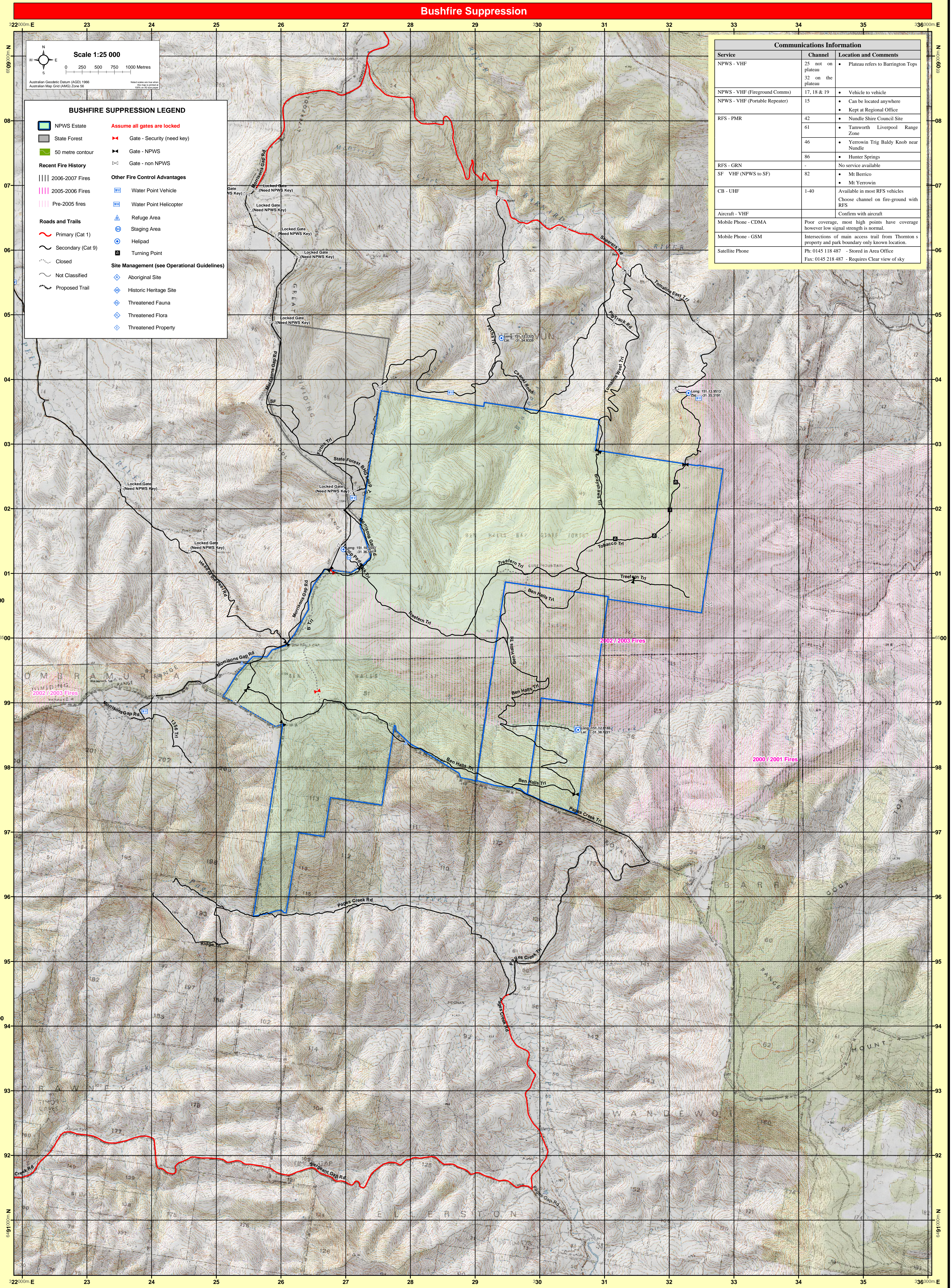
Visitor Management (NPWS FMM 3.6 & 4.13)



Fire Thresholds

Fire thresholds are defined for vegetation communities to conserve biodiversity.

Overburnt	Fire thresholds have been exceeded.
Vulnerable	Proximal fire has occurred. The area will be Overburnt if it burns this year.
Recently Burnt	Proximal fire has occurred. Time since fire is less than the optimal interval, but before that it was within threshold.
Within Threshold	Fire has not occurred. Fire history is within the threshold for vegetation in this area.
Almost Underburnt	The area is close to the threshold and may become underburnt with the absence of fire.
Underburnt	A prescribed burn may be advantageous. Consider allowing unplanned fires to burn.
Unknown	Insufficient data to determine fire threshold.



Communications Information

Service	Channel	Location and Comments
NPWS - VHF	25 not on plateau	Vehicle to vehicle
NPWS - VHF (Fireground Comm)	17, 18 & 19	Keep at Regional Office
NPWS - VHF (Portable Repeater)	15	Can be located anywhere
RFS - PMR	42	Namille Shire Council Site
	41	Tamworth Liverpool Range Zone
	46	Yerrwin Trip Baldy Knob near Namille
	86	Hunter Springs
RFS - GRN	-	No service available
SF - VHF (NPWS to SF)	82	Mt Berico
CB - UHF	1-40	Available in most RFS vehicles
Aircraft - VHF	-	Choose channel on fire-ground with RFS
Aircraft - UHF	-	Confirm with aircraft
Mobile Phone - CDMA	-	Poor coverage, most high points have coverage however low signal strength in normal
Mobile Phone - GSM	-	Intersections of main access trail from Thornton's property and park boundary only known location
Satellite Phone	-	18, 0145 118 017 - Search Area Office Fax: 0145 218 487 - Requires Clear view of sky