

Hunter Region Barrington Tops National Park & Surrounding Reserves Fire Management Strategy (Type 2) 2007 Sheet 6 of 8

This strategy should be used in conjunction with aerial photography and field reconnaissance during incidents and the development of incident action plans.

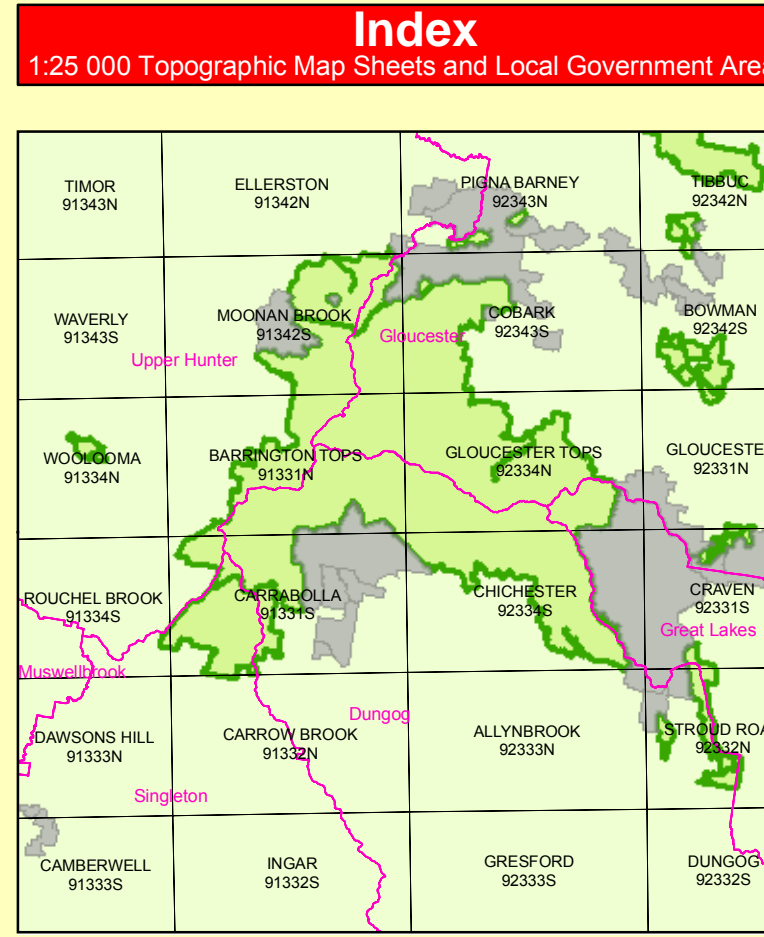
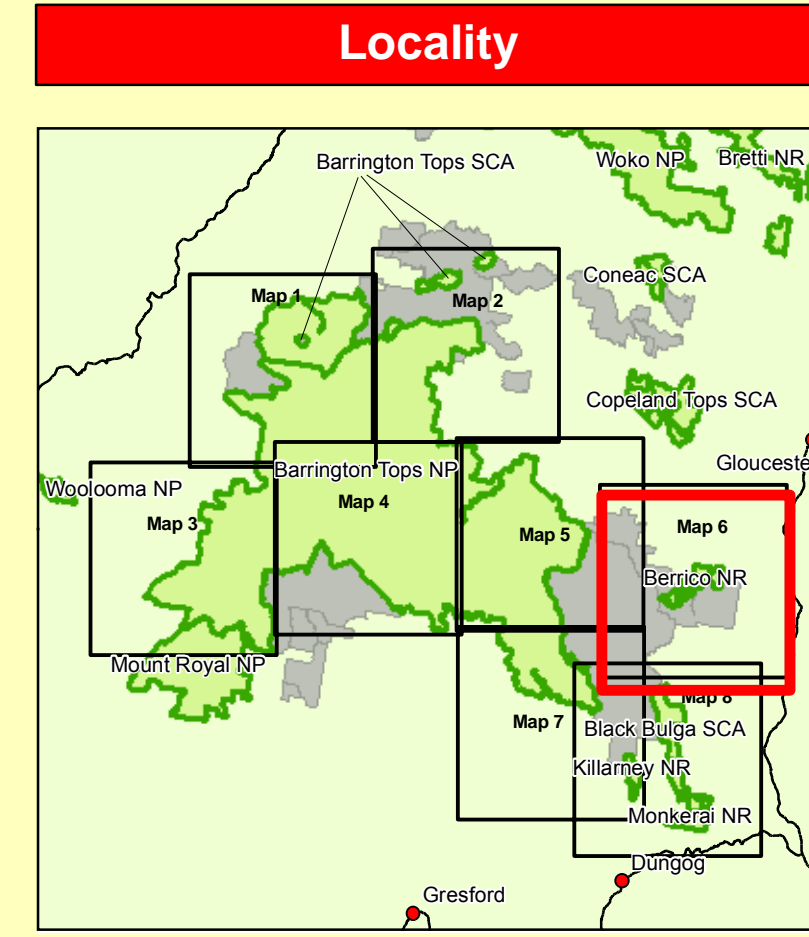
These data are not guaranteed to be free from error or omission. The NSW National Parks and Wildlife Service and its employees disclaim liability for any and all consequences of such errors or omissions.

This document is copyright. Apart from any fair dealing for the purpose of study, research, criticism or review, as permitted under the copyright Act, no part may be reproduced by any process without written permission.

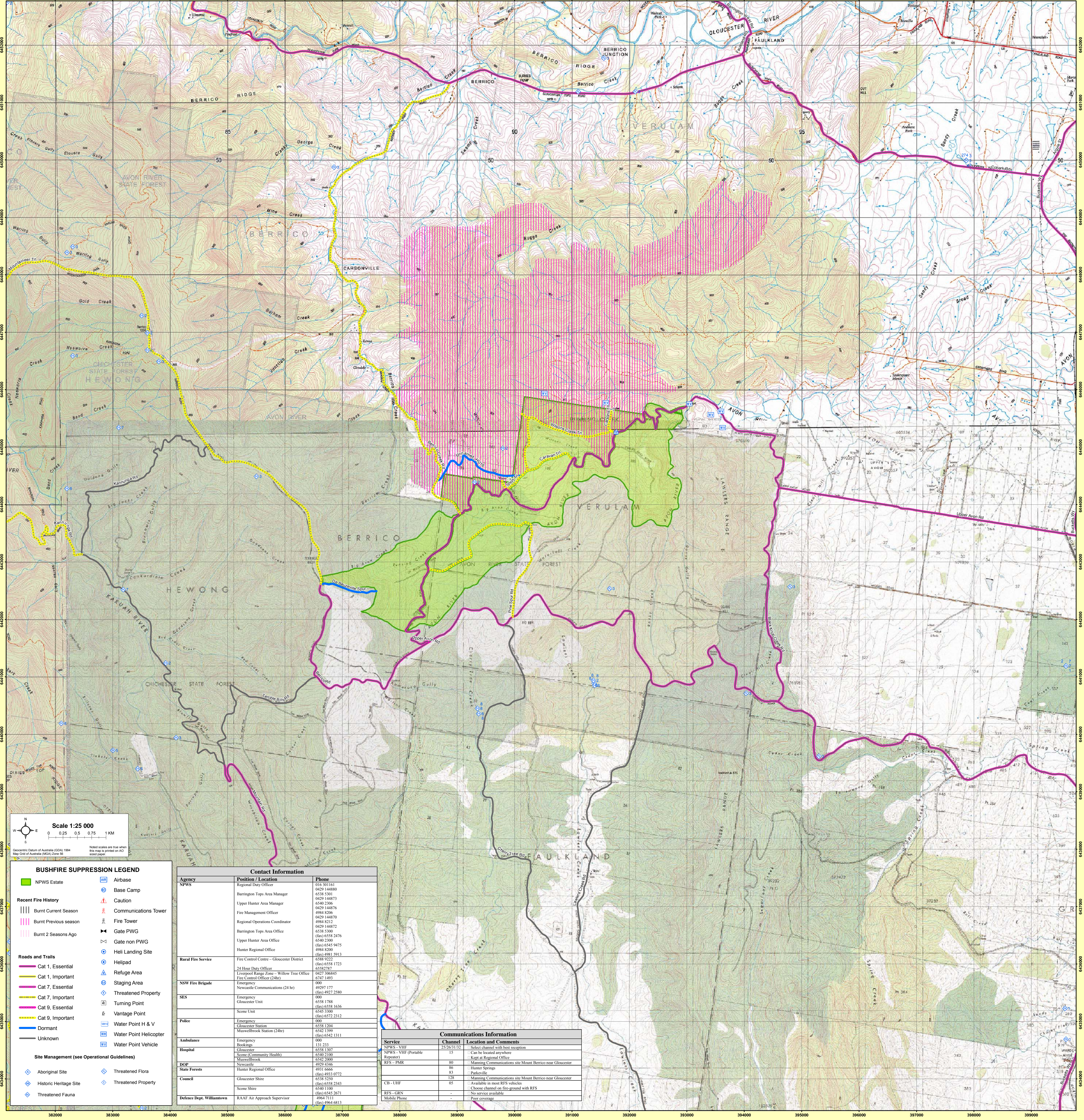
The NSW National Parks and Wildlife Service is part of the Department of Environment and Climate Change. Published by the Department of Environment and Climate Change (NSW), June 2006.
Contact: NSW National Parks and Wildlife Service, Hunter Region, Locked Bag 99, Nelson Bay DC NSW 2315.
ISBN: 9 78 1 74122 6591 DEC Number: 2007 / 548 Last Updated: 18/01/11

Department of Environment and Climate Change (NSW) This strategy is a relevant Plan under Section 38 (4) and Section 44 (3) of Rural Fires Act 1997

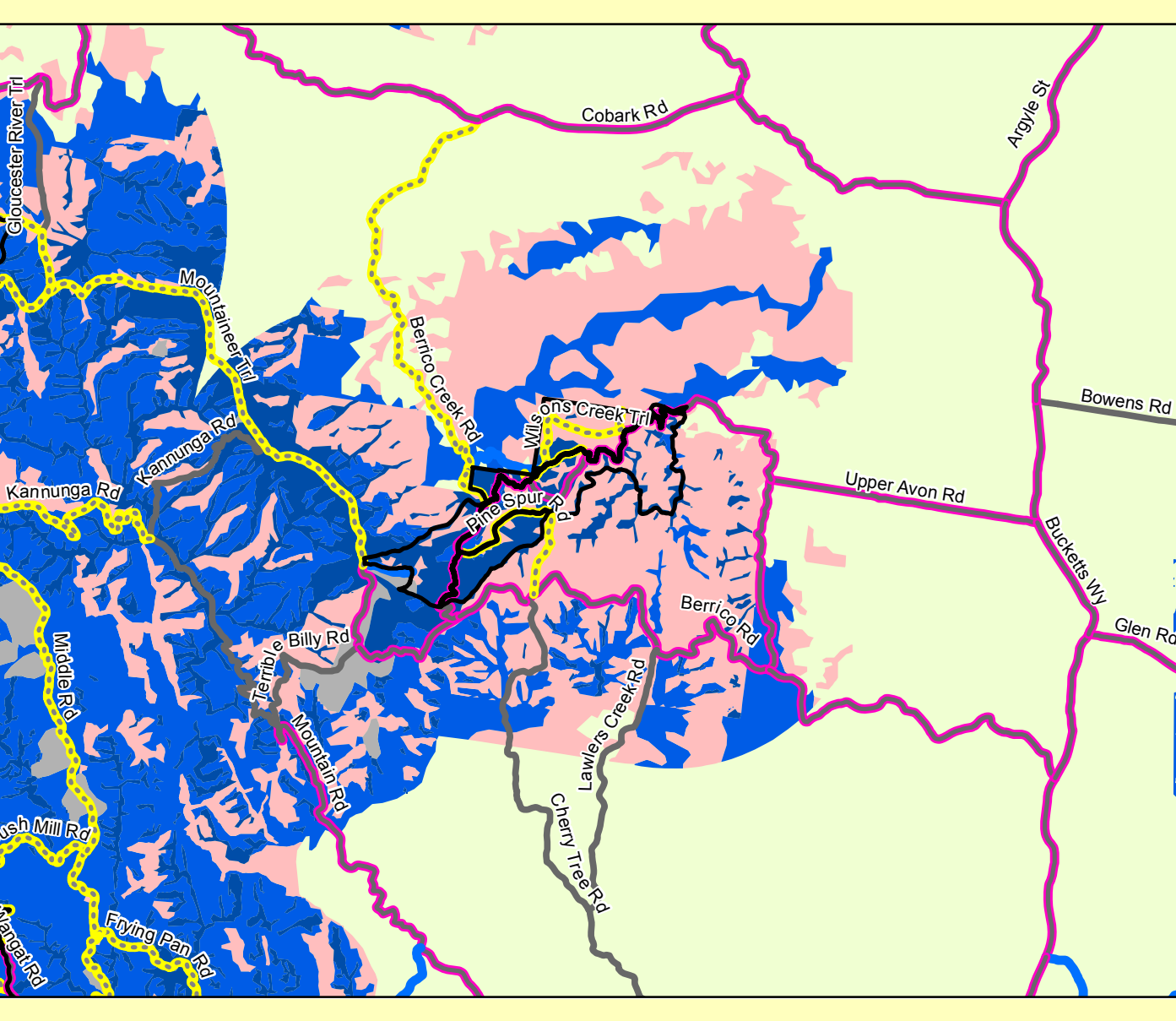
Endorsed by: **John O'Gorman** Date: 30/ 6/ 2007
Director Northern, Parks & Wildlife Division



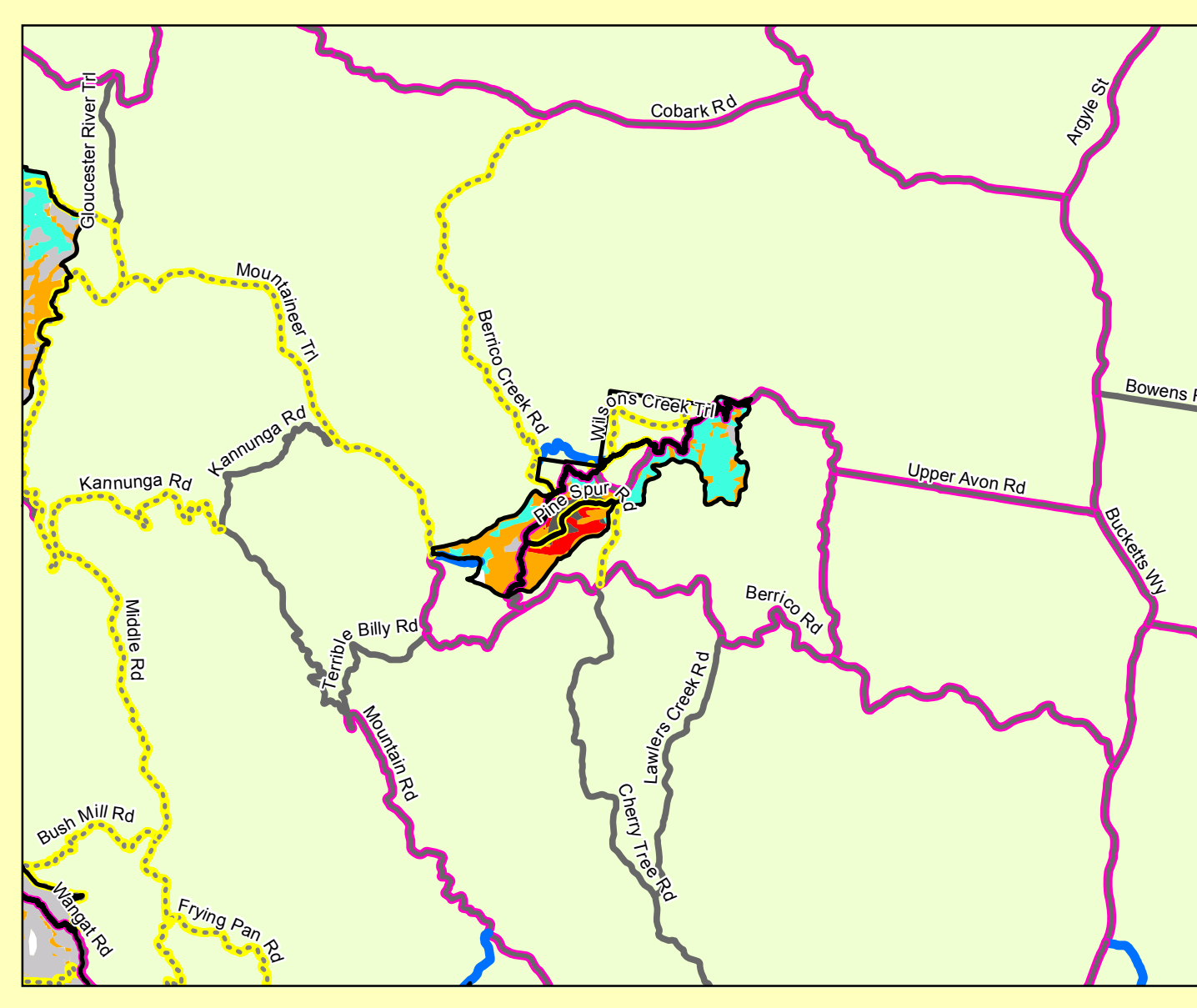
Bushfire Suppression



Vegetation



Current Vegetation Status (Fire Thresholds)



VEGETATION LEGEND

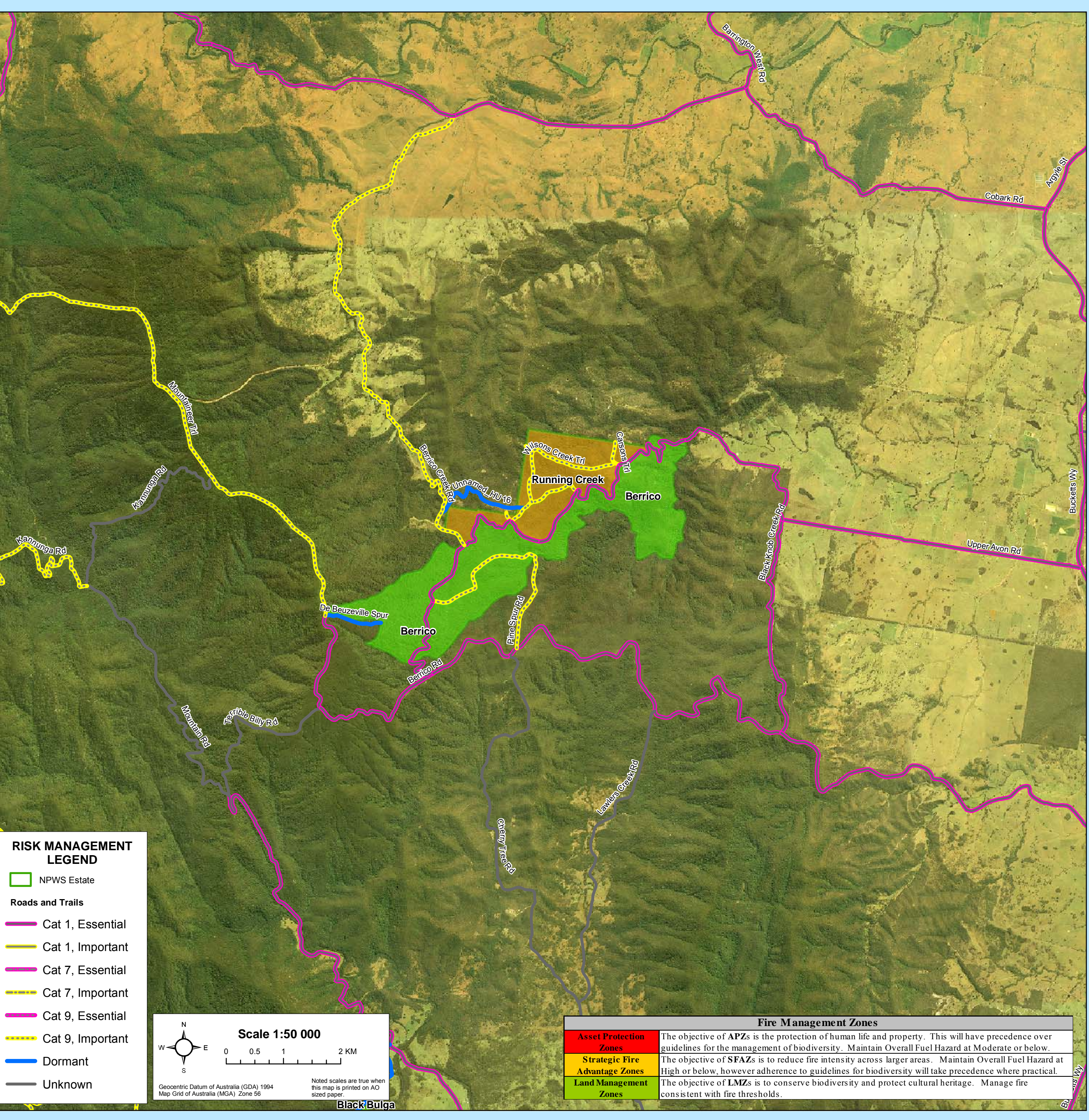
NPWS Estate	Semi-Mesic Grassy Forest	Mangrove/Saltmarsh
Plantation	Native Grassland	Saline Wetland
Introduced	Grassland	Severely Disturbed Vegetation
Artificial Communities	And & Semi-And Shrubland	Endangered Sub-Alpine Wet
Softwood Plantation	Forebush	Endangered Box Snow Grass
Grassy Dry Sclerophyll Forest	Palum Forest	Sub-Alpine Woodland
Sclerophyll Grassy Woodland	Sedge/land/Rushland	Wet Sclerophyll Forest
Healthy Woodland	Serpentine Community	Rainforest
Heathland	Riparian Forest	Unknown
Endangered Box Open Forest	Wet Heath	Unknown
Shrubby Dry Sclerophyll Forest	Freshwater Wetland	Unknown

Fire Thresholds

Too Frequently Burnt	Fire thresholds have been exceeded. Protect from fire as far as possible.
Vulnerable to Frequent Fire	The area will be Too Frequently Burnt if it burns this year. Protect from fire as far as possible.
Within Threshold	Fire history is within the threshold for vegetation in this area. A burn is neither required nor should one necessarily be avoided.
Long Unburnt	Fire frequency is below fire thresholds in the area. A prescribed burn may be advantageous. Consider allowing unplanned fires to burn.
Unknown	Insufficient data to determine fire threshold.
No Regime Assigned	Areas which do not have recommended fire intervals assigned to them eg. cleared land, rock.

NB. Fire thresholds are defined for vegetation communities to conserve biodiversity.

Risk Management Information

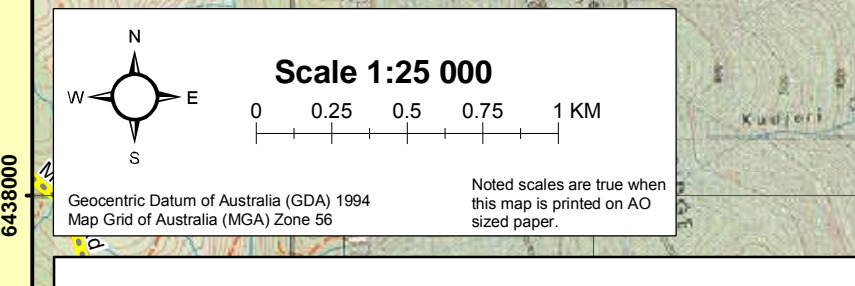


RISK MANAGEMENT LEGEND

NPWS Estate
Roads and Trails
Cat 1, Essential
Cat 1, Important
Cat 7, Essential
Cat 7, Important
Cat 9, Essential
Cat 9, Important
Dormant
Unknown

Fire Management Zones

Asset Protection Zone	The objective of APZs is the protection of human life and property. This will have precedence over guidelines for the management of biodiversity. Maintain Overall Fuel Hazard at Moderate or below.
Strategic Fire Management Zone	The objective of SFMZs is to reduce fire intensity across larger areas. Maintain Overall Fuel Hazard at High or below, however adherence to guidelines for biodiversity will take precedence where practical.
Land Management Zone	The objective of LMZs is to conserve biodiversity and protect cultural heritage. Manage fire consistent with fire thresholds.



BUSHFIRE SUPPRESSION LEGEND

NPWS Estate	Airbase
Recent Fire History	Base Camp
Burnt Current Season	Caution
Burnt Previous season	Communications Tower
Burnt 2 Seasons Ago	Fire Tower
Roads and Trails	Gate PWG
Cat 1, Essential	Gate non PWG
Cat 1, Important	Hel Landing Site
Cat 7, Essential	Helipad
Cat 7, Important	Refuge Area
Cat 9, Essential	Staging Area
Cat 9, Important	Threatened Property
Dormant	Turning Point
Unknown	Vantage Point
	Water Point H & V
	Water Point Helicopter
	Water Point Vehicle

Contact Information

Agency	Position / Location	Phone
NPWS	Regional Duty Officer	016 301144
	Barrington Tops Area Manager	0429 144880
	Upper Hunter Area Manager	0429 144873
	Fire Management Officer	0429 144876
	Regional Operations Coordinator	0429 144879
	Barrington Tops Area Office	0429 144872
	Upper Hunter Area Office	(064) 6524 2476
	Hunter Regional Office	(064) 6545 9475
		(064) 8991 9913
		(064) 6524 1723
Rural Fire Service	Fire Control Centre - Gloucester District	0277 308845
	ES Bush Duty Officer	0277 308845
NSW Fire Brigade	Emergency Communications (24hr)	000
	Emergency Communications (24hr)	0929 177 177
SES	Emergency	0624 1788
	Scene Unit	(064) 6524 3636
Police	Emergency	042 000 000
	Gloucester Station	(064) 6524 3112
Ambulance	Emergency	042 000 000
	Thurs/Wed/Week Station (24hr)	(064) 6542 1311
Hospital	Emergency	131 235
	Scene (Community Health)	0429 2200
DOP	Gloucester	0429 4366
	Hunter Regional Office	0429 4366
State Forests	Hunter Regional Office	0429 4366
	Gloucester Shire	063 5224
Council	Gloucester Shire	063 5224
	Gloucester Shire	063 5224
Defence Dept. Williamson	RAAF Air Approach Supervisor	064 7111
		064 6831

Communications Information

Service	Channel	Location and Comments
NPWS - VHF	22-24, 31-32	Sched channel with best reception
NPWS - VHF (Portable)	15	Can be located anywhere
Regional	15	Keep at Regional Office
RFS - PMR	80	Manning Communications site Mount Berrico near Gloucester
RFS - PMR	86	Hunter Network
RFS - PMR	83	Barrington Tops
CB - UHF	68	Manning Communications site Mount Berrico near Gloucester
CB - UHF	69	Available in most RFS vehicles
RFS - GRS	-	Choose channel on the ground with RFS
Mobile Phone	-	No service available
Mobile Phone	-	Port coverage