

Hunter Region Barrington Tops National Park & Surrounding Reserves Fire Management Strategy (Type 2) 2007 Sheet 3 of 8

This strategy should be used in conjunction with aerial photography and field reconnaissance during incidents and the development of incident action plans.

These data are not guaranteed to be free from error or omission. The NSW National Parks and Wildlife Service and its employees disclaim liability for any act done on the information in this strategy or any consequences of such acts or omissions.

This document is copyright. Apart from any fair dealing for the purpose of study, research criticism or review, as permitted under the Copyright Act, no part may be reproduced by any means without written permission.

The NSW National Parks and Wildlife Service is part of the Department of Environment and Climate Change.
Published by the Department of Environment and Climate Change (NSW), June 2006.
Contact: NSW National Parks and Wildlife Service, Hunter Region, Locked Bay 99, Nelson Bay NSW 2315.
ISBN: 9 78 1 74122 6591 DEC Number: 2007 / 548 Last Updated: 18/01/11

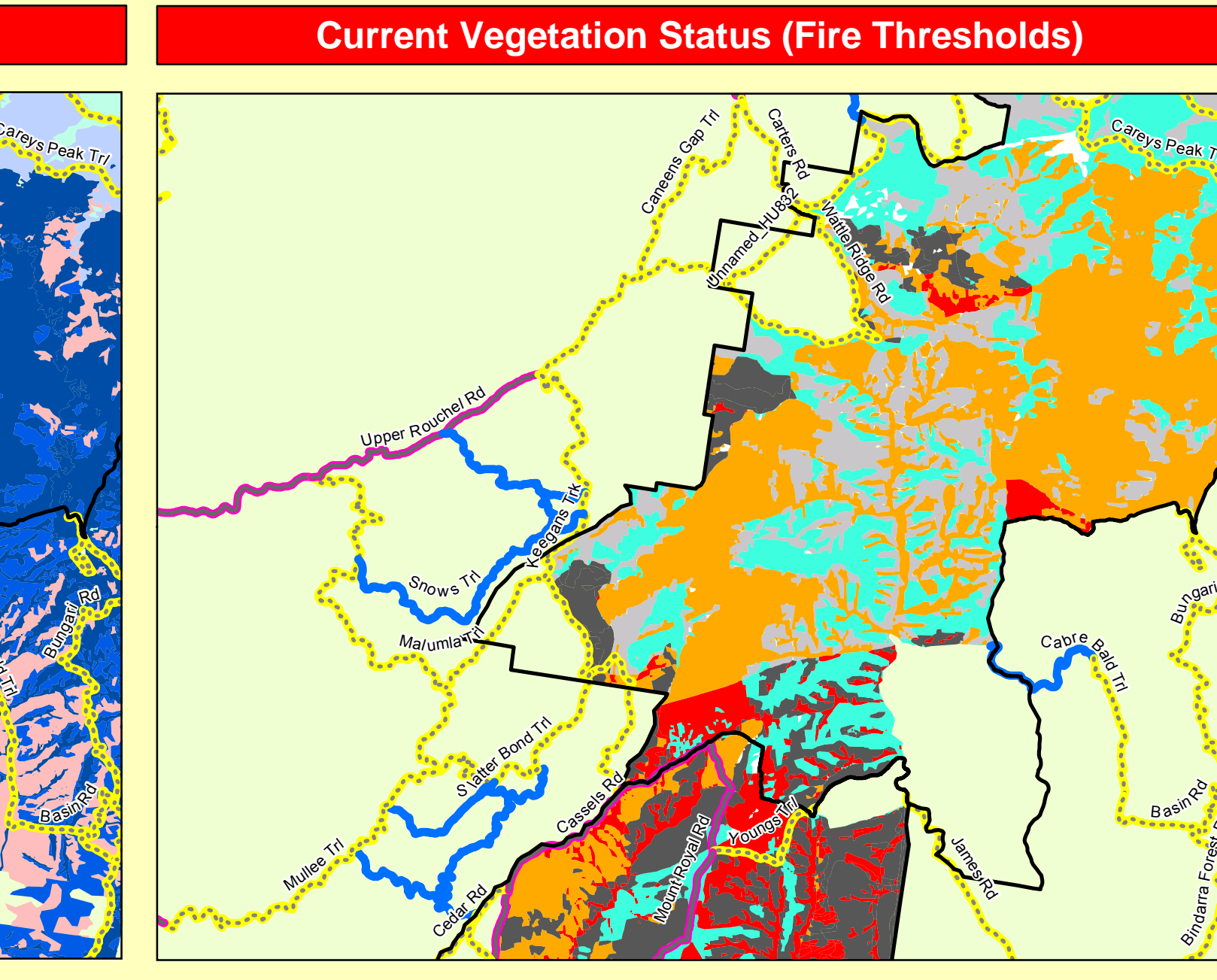
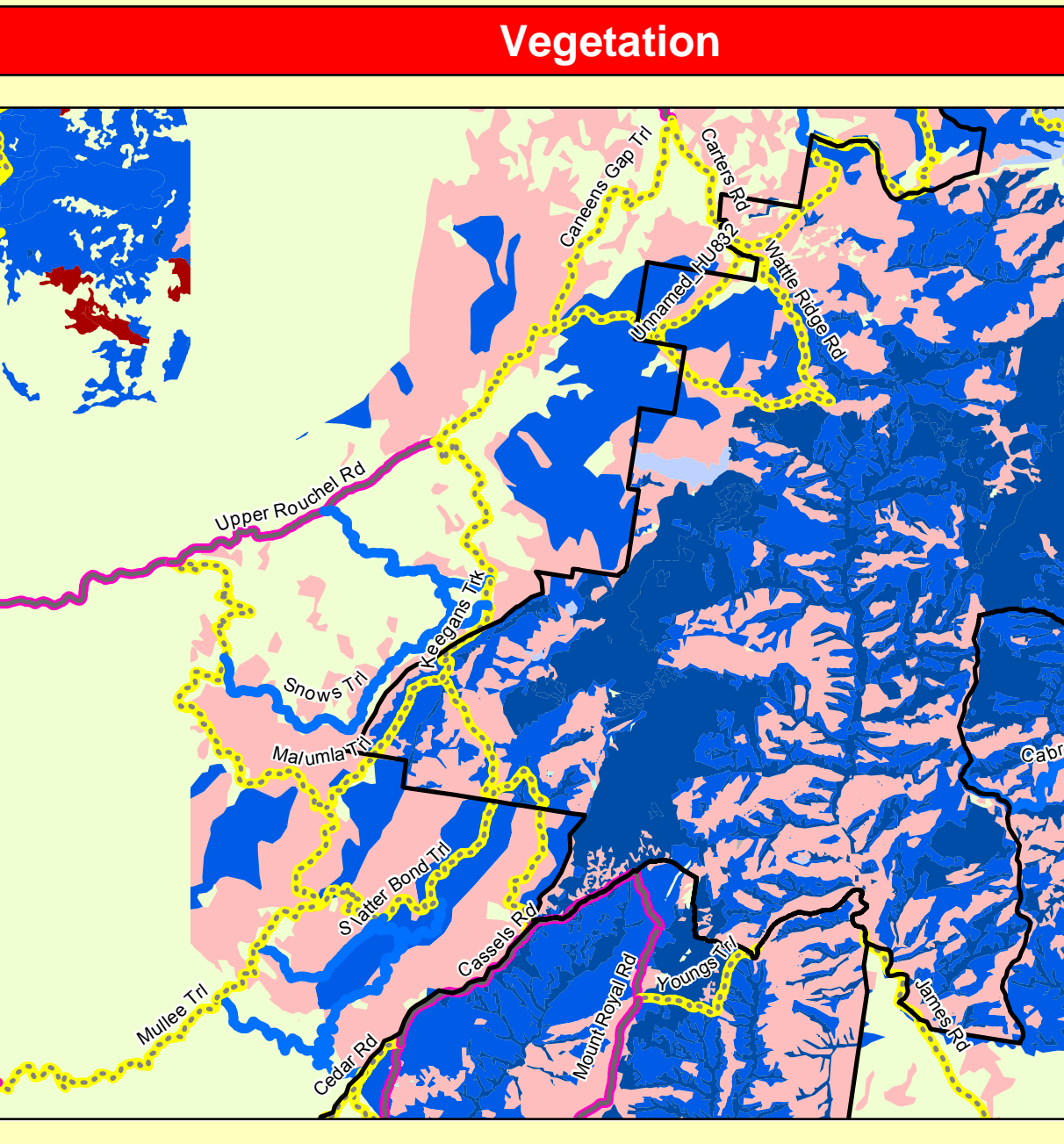
Department of Environment and Climate Change (NSW)
This strategy is a relevant Plan under Section 38 (4) and Section 44 (3) of Rural Fires Act 1997.

Endorsed by: John O'Gorman Date: 30/ 6/ 2007
Director Northern, Parks & Wildlife Division

Locality

Index

1:25 000 Topographic Map Sheets and Local Government Areas



VEGETATION LEGEND

NPWS Estate	Semi-Mesic Grassy Forest	Mangrove/Saltmarsh
Plantation	Native Grassland	Saline Wetland
Introduced	Grassland	Severely Disturbed Vegetation
Artificial Communities	And & Semi-And Shrubland	Endangered Sub-Alpine Wet
Softwood Plantation	Forebush	Endangered Box Snow Grass
Grassy Dry Sclerophyll Forest	Paup Forest	Sub-Alpine Woodland
Sclerophyll Grassy Woodland	Gedgeland/Rushland	Swamp Sclerophyll Forest
Healthy Woodland	Serpentine Community	Wet Sclerophyll Forest
Heathland	Riparian Forest	Rainforest
Endangered Box Open Forest	Wet Heath	Unknown
Shrubby Dry Sclerophyll Forest	Freshwater Wetland	

Fire Thresholds

Too Frequently Burnt	Fire thresholds have been exceeded. Protect from fire as far as possible.
Vulnerable to Frequent Fire	The area will be Too Frequently Burnt if it burns this year. Protect from fire as far as possible.
Within Threshold	Fire history is within the threshold for vegetation in this area. A burn is neither required nor should one necessarily be avoided.
Long Unburnt	Fire frequency is below fire thresholds in the area. A prescribed burn may be advantageous. Consider allowing unplanned fires to burn.
Unknown	Insufficient data to determine fire threshold.
No Regime Assigned	Areas which do not have recommended fire intervals assigned to them eg. cleared land, rock.

NB. Fire thresholds are defined for vegetation communities to conserve biodiversity

