

Barool National Park

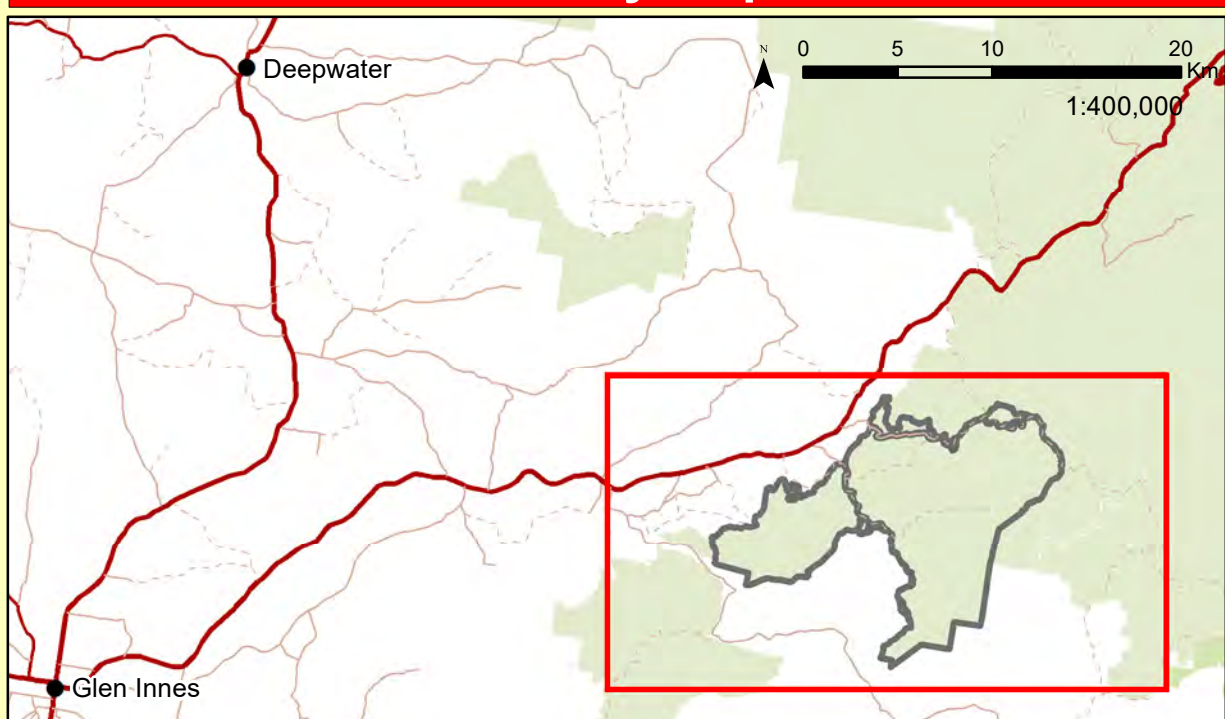
Fire Management Strategy (Type 2) 2021 – 2026



This strategy should be used in conjunction with aerial photography and field reconnaissance. These data are not guaranteed to be free from error or omission. The NSW National Parks and Wildlife Service and its employees disclaim liability for any act done or the information the data and any consequences of such acts or omissions.

ISBN: 978-1-922493-54-5 DPEI Number: EE52020/0504 Last Updated: 04/01/2021 This strategy is a relevant Plan under Section 38 (4) and Section 44 (3) of the Rural Fires Act 1997.

Locality Map



Map details

Datum: GDA_1984_MGA_Zone_56 Geographic Coordinate System: GDA_1984_MGA_Zone_56 Vertical datum: True when printed on all size paper

Contact Information

Table with 3 columns: Agency, Position / Location, Phone. Lists contact details for National Parks & Wildlife Service, NSW Rural Fire Service, Forest Corporation of NSW, Fire & Rescue NSW, Emergency Services, SES, Police, and Local Aboriginal Land Council.

Communications

Table with 3 columns: Service, Channel, Location and Comments. Lists communication methods such as NPWS Repeaters, FC NSW, RFS, UHF-CB, Avigation-CTAF, and Satellite Phone.

Fire Season Information

Wildfires: The critical wildfire season occurs during November and December. Prescribed Burning: Effective prescribed burning in areas with LOW - MODERATE Overall Fuel Hazard may need to be conducted once the 'critical fire season' and thunderstorm season is over.

Operational Guidelines

Landscaping scale wildfires have occurred across this reserve. Aerial operations will be managed by trained and competent personnel. Backburning is an essential part of fire management. Command & Control: The Incident Controller will liaise with the RFS to ensure that the agency in command is determined and an Incident Controller is appointed.

WARNINGS

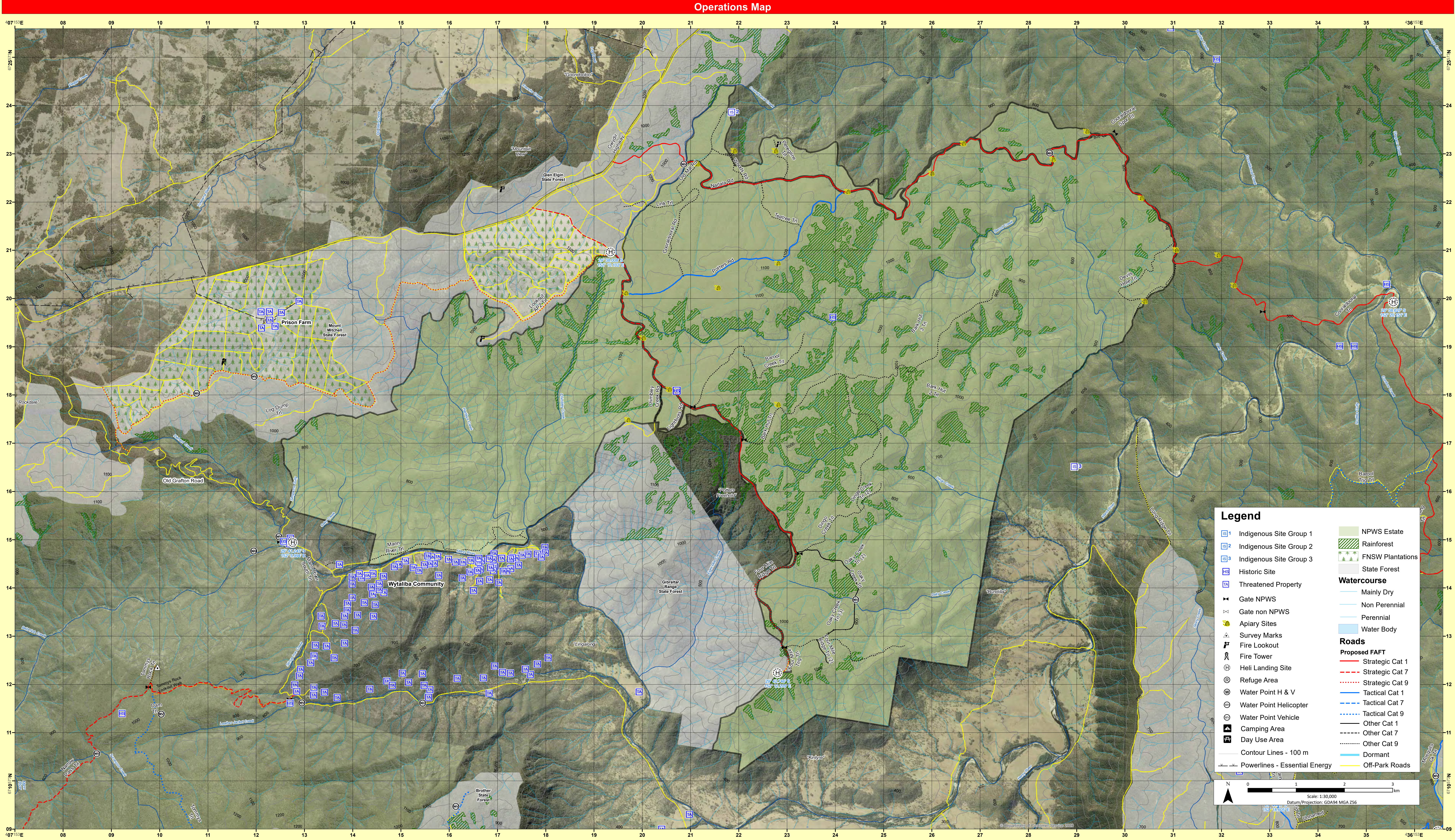
Black text - general guidelines Blue text - reserve specific guidelines Red text - important warnings. Includes a note about heritage guidelines: 'IS 1 - As far as possible protect sites from fire. Do not cut down trees.'

Heritage Guidelines

Aboriginal Cultural Heritage: IS 1 - As far as possible, protect the site from fire. IS 2 - As far as possible, protect the site from fire. IS 3 - Avoid all ground disturbance. Historic Sites: Evidence of forestry operations conducted in the park relate to the Eric Potter and Charlie Greenway Bush Mill which commenced operations in the mid-1940s.

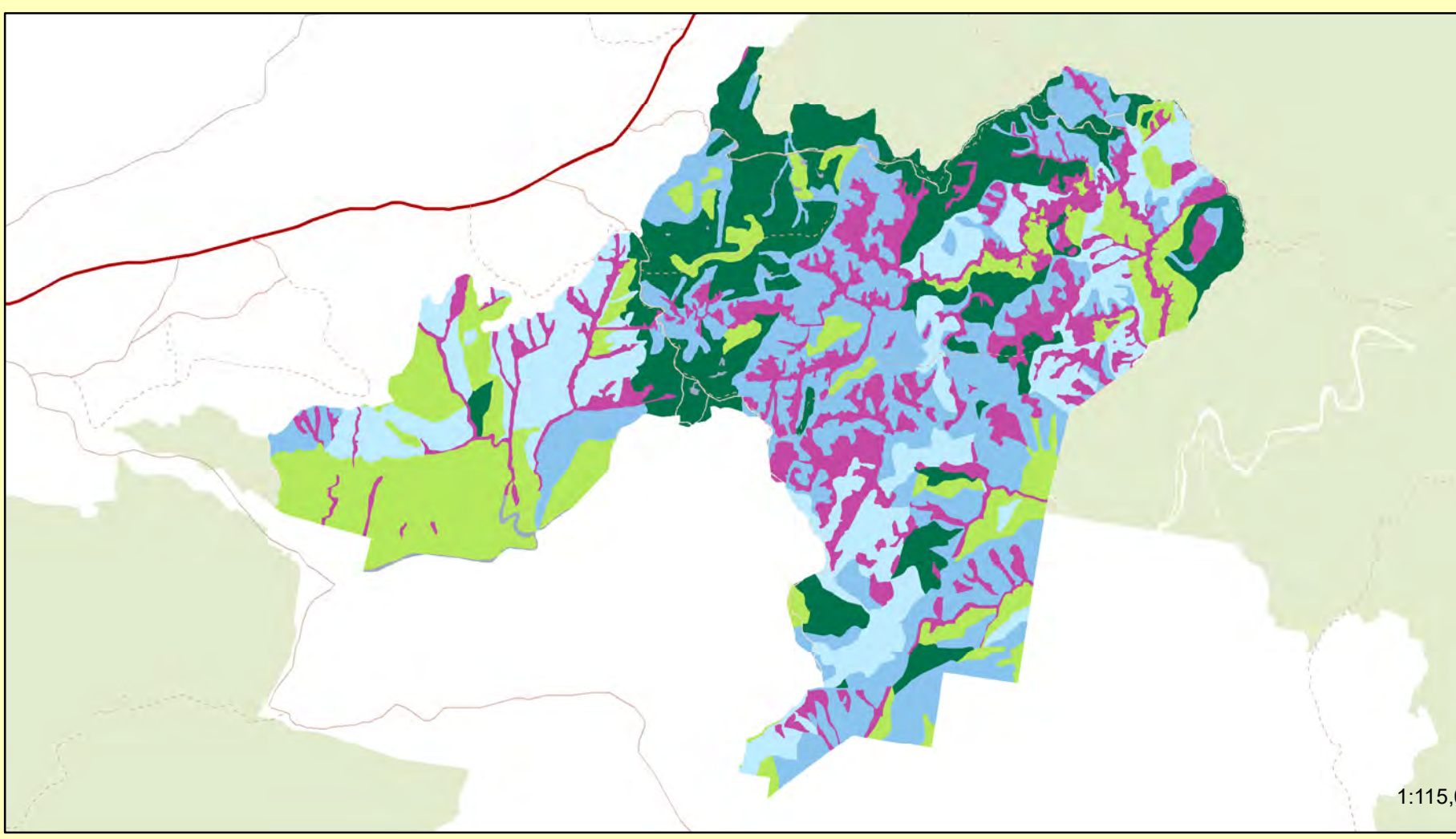
Suppression Strategies

Conditions Guidelines: All vegetation types: Consider a broad containment strategy using existing roads, allowing long-term management requirements for biodiversity. Fire danger rating LOW - HIGH: Direct and parallel attack may be applied with earthmoving machinery and fire units.

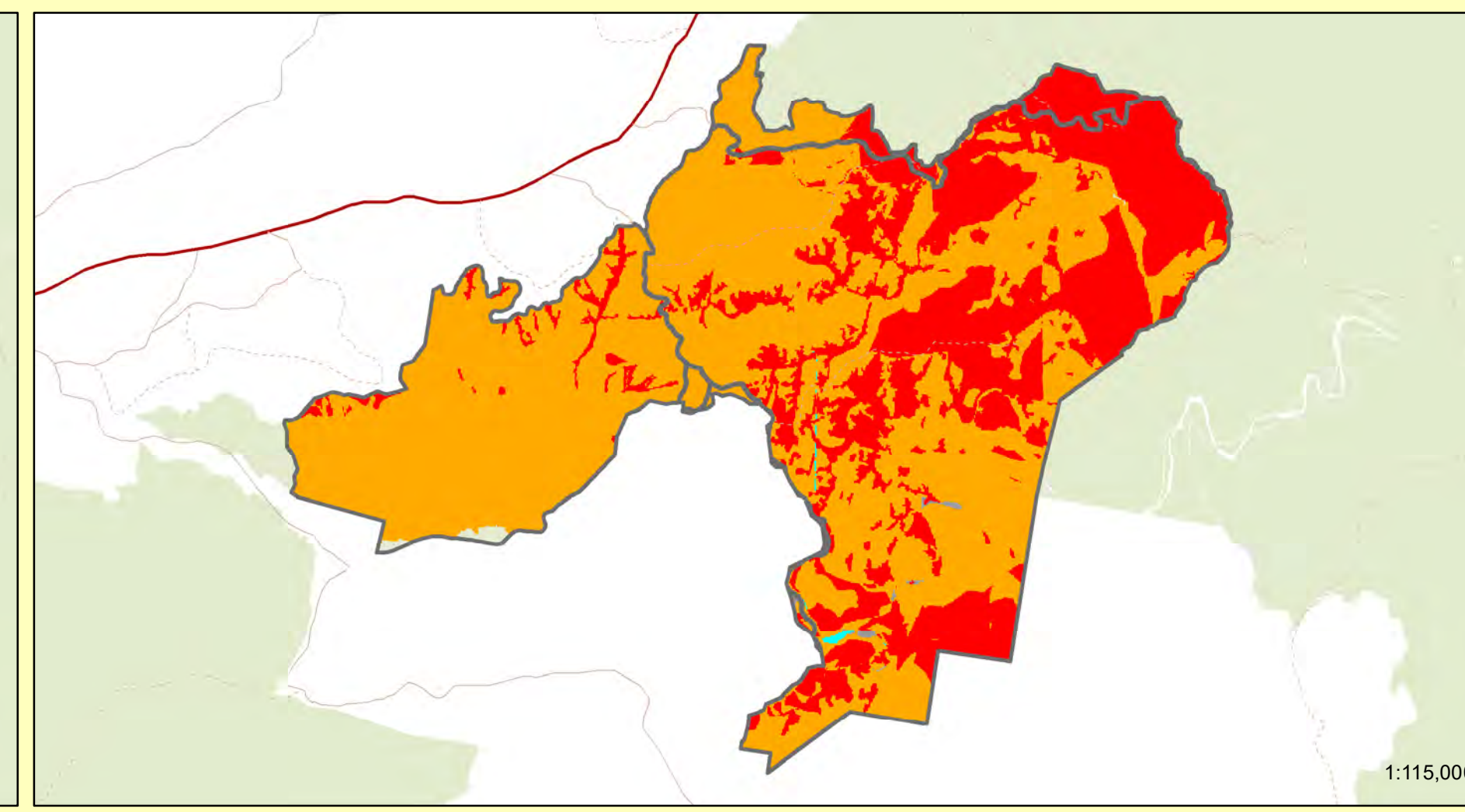


Legend: Defines symbols for Indigenous Site Groups, Historic Sites, Threatened Properties, Gate non NPWS, Apiary Sites, Fire Lookout, Fire Tower, Heli Landing Site, Refuge Area, Water Point H & V, Water Point Helicopter, Water Point Vehicle, Camping Area, Day Use Area, Contour Lines, Powerlines, NPWS Estate, Rainforest, FNSW Plantations, State Forest, Watercourse, Gate non NPWS, Non Perennial, Perennial, Water Body, Roads (Strategic Cat 1-9, Tactical Cat 1-9, Other Cat 1-9), Dormant, Off-Park Roads.

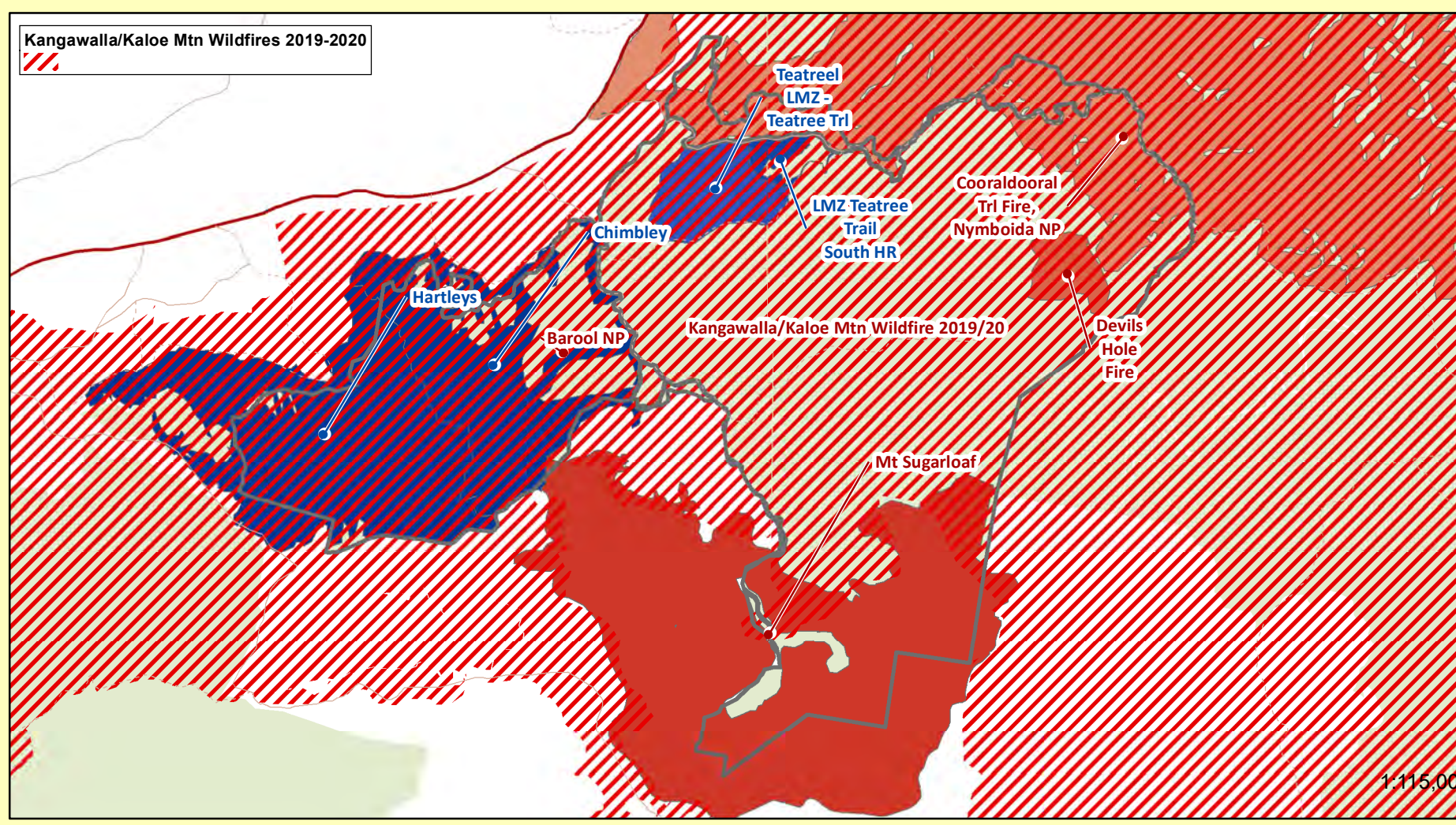
Vegetation



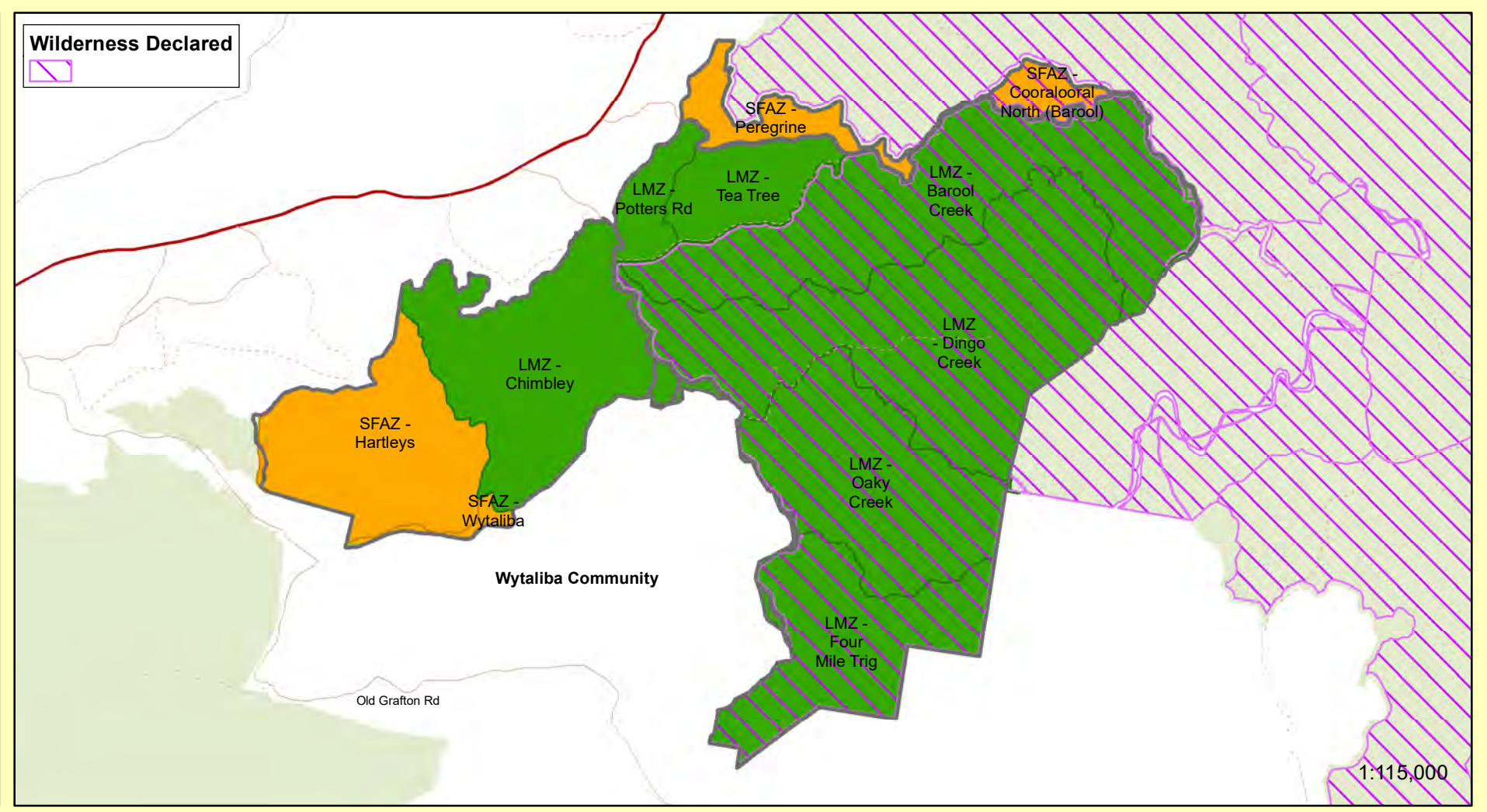
Vegetation Fire Thresholds



Fire History



Risk Management Information



Vegetation Formation (Kaltb) and Vegetation Management Guidelines. Lists fire behavior and treatment strategies for different vegetation types like heathland, sclerophyll forests, and grassy sub-forests.

Vegetation Threshold and Treatment. Table mapping vegetation thresholds to specific fire treatments.

Fire Type and Fire Details. Table listing fire types (Prescribed Burn, Wildfires) and their associated details like date and location.

Fire Management Zone and Treatment. Table detailing the objectives and treatments for Asset Protection Zones, Strategic Fire Advantage Zones, and Land Management Zones.