



**NSW NATIONAL PARKS & WILDLIFE SERVICE**

# **Amendment to Bago Bluff National Park**

**Plan of Management**



© 2019 State of NSW and Department of Planning, Industry and Environment

With the exception of photographs, the State of NSW and Department of Planning, Industry and Environment are pleased to allow this material to be reproduced in whole or in part for educational and non-commercial use, provided the meaning is unchanged and its source, publisher and authorship are acknowledged. Specific permission is required for the reproduction of photographs.

The Department of Planning, Industry and Environment (DPIE) has compiled this report in good faith, exercising all due care and attention. No representation is made about the accuracy, completeness or suitability of the information in this publication for any particular purpose. DPIE shall not be liable for any damage which may occur to any person or organisation taking action or not on the basis of this publication. Readers should seek appropriate advice when applying the information to their specific needs.

All content in this publication is owned by DPIE and is protected by Crown Copyright, unless credited otherwise. It is licensed under the [Creative Commons Attribution 4.0 International \(CC BY 4.0\)](#), subject to the exemptions contained in the licence. The legal code for the licence is available at [Creative Commons](#).

DPIE asserts the right to be attributed as author of the original material in the following manner: © State of New South Wales and Department of Planning, Industry and Environment 2019.

Cover photo: Bago Bluff, Bago Bluff National Park, Wauchope, NSW. C Goodwin, Creative Commons Attribution-Share Alike 3.0 Unported license

**This amendment was adopted by the Minister for Energy and Environment on 22 August 2019.**

Bago Bluff National Park is in the traditional Country of the Birpai People.

This plan of management amendment was prepared by staff of the North Coast and Hunter Central Coast operations branches of the NSW National Parks and Wildlife Service (NPWS).

For additional information about the plan of management, this amendment or the park, contact the NPWS Hastings Macleay Area Office at 22 Blackbutt Road Port Macquarie NSW 2444 or by telephone on 02 6588 5555.

Published by:

Environment, Energy and Science  
Department of Planning, Industry and Environment  
59 Goulburn Street, Sydney NSW 2000  
PO Box A290, Sydney South NSW 1232  
Phone: +61 2 9995 5000 (switchboard)  
Phone: 1300 361 967 (Environment, Energy and Science enquiries)  
TTY users: phone 133 677, then ask for 1300 361 967  
Speak and listen users: phone 1300 555 727, then ask for 1300 361 967  
Email: [info@environment.nsw.gov.au](mailto:info@environment.nsw.gov.au)  
Website: [www.environment.nsw.gov.au](http://www.environment.nsw.gov.au)

Report pollution and environmental incidents

Environment Line: 131 555 (NSW only) or [info@environment.nsw.gov.au](mailto:info@environment.nsw.gov.au)

See also [www.environment.nsw.gov.au](http://www.environment.nsw.gov.au)

ISBN 978-1-922317-22-3

EES2019/0542

September 2019

Find out more about your environment at:

**[www.environment.nsw.gov.au](http://www.environment.nsw.gov.au)**

# Introduction

## Background

Bago Bluff National Park is located about 10 kilometres south-west of Wauchope in the hinterland of the NSW mid north coast. The park was reserved in 1999 and covers an area of 4023 hectares.

A plan of management outlines how the NSW National Parks and Wildlife Service (NPWS) manages a park or reserve and is a formal document under the *National Parks and Wildlife Act 1974*. The *Bago Bluff National Park Plan of Management* was adopted in 2007. This followed extensive public consultation, including the exhibition of a draft plan of management for three months in late 2004 and early 2005.

Under section 73B(3) of the National Parks and Wildlife Act, the Minister may amend or alter a plan of management from time to time on the recommendation of NPWS. The amendment to the *Bago Bluff National Park Plan of Management* was triggered by the need to provide for additional horse riding access, and to update the mapping of the park's road and trail network.

The procedures for the amendment of plans of management are specified under Part 5 of the National Parks and Wildlife Act. It involves the exhibition of a draft amendment for a period of at least 45 days and consideration of the proposed amendment and any submissions by statutory advisory bodies before the amendment is adopted.

This amendment was exhibited between 9 October and 7 December 2015. The two submissions received on the draft amendment have been considered in finalising the amendment.

## How to read the amendment

This amendment replaces the map in the plan of management and changes sections of text in the plan. Ideally, this amendment should be read in conjunction with the *Bago Bluff National Park Plan of Management*, as adopted in 2007.

This version of the plan is available on the [Department of Planning, Industry and Environments website](#).

References in this amendment to pages in the existing plan relate to the page numbering used in the online version of the plan.

# Amendment to Bago Bluff National Park Plan of Management

## Justification for the amendment

The NSW Government is committed to providing appropriate, high quality horse riding experiences in NSW national parks and reserves. Horse riding in national parks provides an opportunity for horse riders to experience national parks and appreciate their natural heritage.

The National Parks and Wildlife Service (NPWS) has developed the *Strategic Directions for Horse Riding in NSW National Parks* (the Strategy) to guide the provision of improved horse riding opportunities over the coming years.

The Strategy recognises the need for horse riding proposals to be sustainable and to ensure that the natural and cultural values of our parks are protected and the safety of all park visitors is maintained. The Lower North Coast was one of eight priority regions identified in the Strategy which were to be the focus for new and improved horse riding opportunities.

Under the existing *Bago Bluff National Park Plan of Management*, horse riding is permitted on all roads and management trails in the park except Rollover Road and the northern section of Herons Creek Road that links with Rollover Road. Currently, organised horse riding activities involving groups of more than 10 horses are not permitted in the park.

In February 2013, NPWS met with key horse riding representatives in the Lower North Coast Region to identify and prioritise potential new opportunities for horse riding in the Region. These opportunities included the following actions for Bago Bluff National Park:

- Promote and signpost existing horse riding opportunities.
- Prepare an amendment to the existing plan of management seeking to:
  - provide additional horse riding access on a trail linking Ducks Ridge Road and Green Wattle Trail
  - allow for horse riding group sizes larger than ten via written consent.

The trail linking Ducks Ridge Road and Green Wattle Trail is less than 500 metres in length. It was not shown on the existing plan of management map but forms part of the boundary of a strategic fire advantage zone and is maintained as a management trail. NPWS considered the proposal to allow horse riding on this trail and concluded that there is unlikely to be any environmental impacts associated with the current low levels of horse riding on this trail. To avoid confusion with the existing Link Trail in Bago Bluff National Park (previously known as Link Road) and Link Road in the adjoining Bulls Ground State Forest, this trail was renamed as an extension of Ducks Ridge Trail.

The preparation of an amendment to the plan of management for Bago Bluff National Park also provided an opportunity to update the road and trail network as shown on the map in the plan of management to make it consistent with the revised fire management strategy for the park, which will now be finalised. The draft fire strategy identified some trails which are not required for fire management or other purposes and are dormant. This includes the westernmost part of what was shown in the plan of management map as Ducks Ridge Road. As they are not maintained, dormant trails are not shown on plan of management maps.

In the updated plan of management map, a consistent naming convention for road and trails has been adopted. For example, if an existing road or trail is classified as a management trail it has been named as a trail on the plan of management map, or if an existing road or trail is

classified as a park road it has been named as a road on the plan of management map. Roads and trails in the park will be signposted accordingly to help reduce confusion and improve the mapping and communication of what trails are available for recreational pursuits such as bushwalking, cycling and horse riding, and which roads are available for 4WD vehicle touring.

## Changes to the plan included in this amendment

### 1. In Section 3. Park Map (page 13)

**Replace** the existing map **with** the new map included in this amendment. The new map:

- includes the 'link' trail to provide additional horse riding access between Ducks Ridge Trail and Green Wattle Trail as an extension to Ducks Ridge Trail
- incorporates updated mapping of the road and trail network consistent with the revised fire management strategy
- uses a consistent naming convention for road and trail classifications
- is bigger and is in colour to more clearly delineate the roads and trails in the park
- includes a title: **Map 1. Bago Bluff National Park.**

Throughout the plan, **replace** 'park map' or 'map' **with** 'Map 1'.

### 2. In Section 4.5 Visitor Use (page 17)

**Replace** the strategy:

- Organised horse riding by groups larger than 10 or competitive horse riding will not be permitted.

**with** the following high priority strategy:

- Horse riding that is part of a competition or large-scale organised activity (including non-commercial groups involving more than 10 horses) will require written consent from NPWS. All commercial activities require a licence.

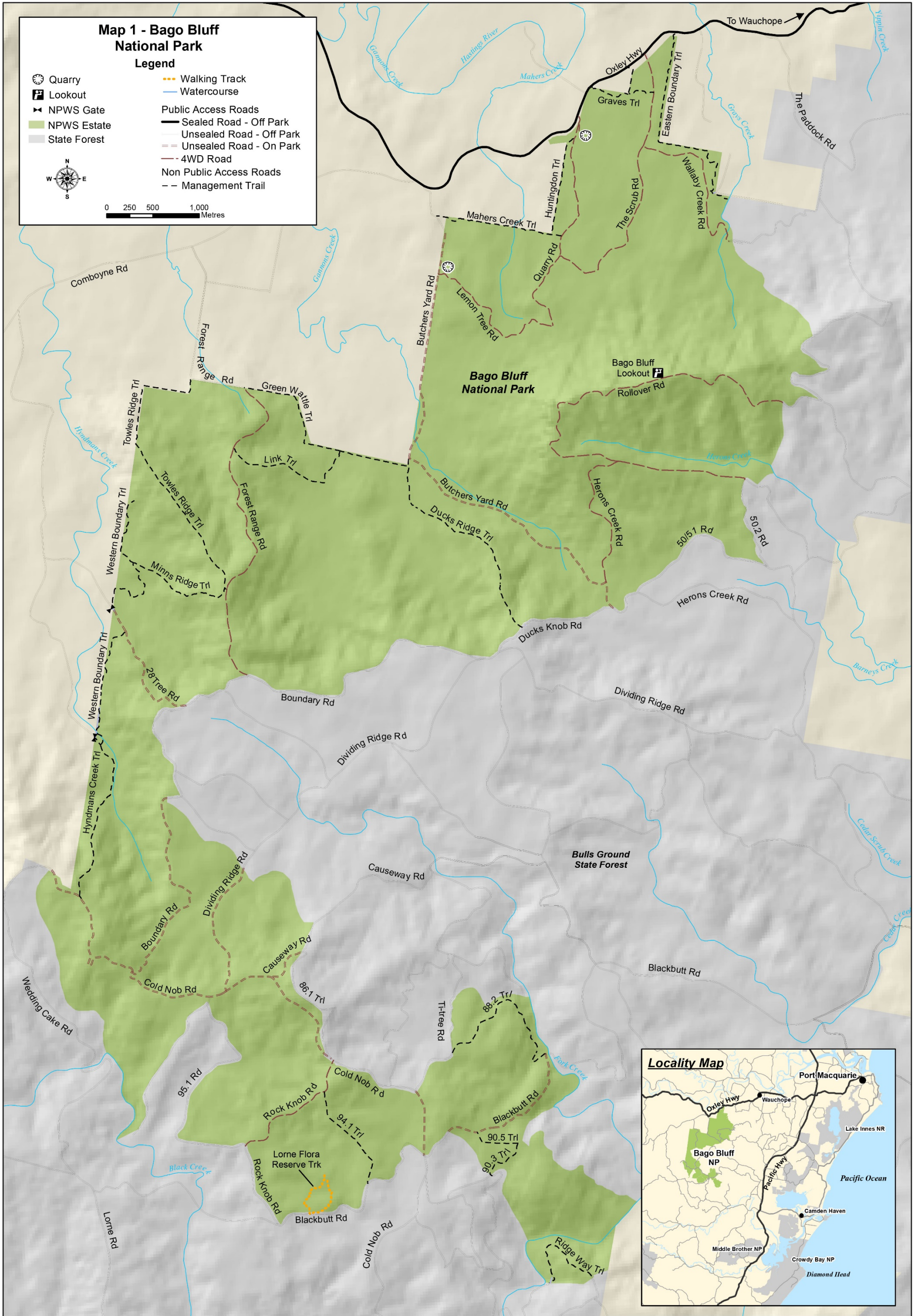
**Add** the following medium priority strategy:

- Promote and signpost roads and management trails in the park where horse riding is permitted.

### 3. In Section 4.9 Management Operations (page 20)

**Add** the following medium priority strategy:

- Install road and trail directional signposting in the park consistent with Map 1 and the park's fire management strategy.



Revised map for the *Bago Bluff National Park Plan of Management*