



Department of Planning and Environment

# Guide on how to view the Biodiversity Values Map on the ePlanning spatial viewer



© 2022 State of NSW and Department of Planning and Environment

With the exception of photographs, the State of NSW and Department of Planning and Environment are pleased to allow this material to be reproduced in whole or in part for educational and non-commercial use, provided the meaning is unchanged and its source, publisher and authorship are acknowledged. Specific permission is required for the reproduction of photographs.

The Department of Planning and Environment (DPE) has compiled this report in good faith, exercising all due care and attention. No representation is made about the accuracy, completeness or suitability of the information in this publication for any particular purpose. DPE shall not be liable for any damage which may occur to any person or organisation taking action or not on the basis of this publication. Readers should seek appropriate advice when applying the information to their specific needs.

All content in this publication is owned by DPE and is protected by Crown Copyright, unless credited otherwise. It is licensed under the [Creative Commons Attribution 4.0 International \(CC BY 4.0\)](#), subject to the exemptions contained in the licence. The legal code for the licence is available at [Creative Commons](#).

DPE asserts the right to be attributed as author of the original material in the following manner: © State of New South Wales and Department of Planning and Environment 2022.

Cover photo: Urban sprawl. John Yurasek/DPE

Published by:

Environment, Energy and Science  
Department of Planning and Environment  
Locked Bag 5022, Parramatta NSW 2124  
Phone: +61 2 9995 5000 (switchboard)  
Phone: 1300 361 967 (Environment, Energy and Science enquiries)  
TTY users: phone 133 677, then ask for 1300 361 967  
Speak and listen users: phone 1300 555 727, then ask for 1300 361 967  
Email: [info@environment.nsw.gov.au](mailto:info@environment.nsw.gov.au)  
Website: [www.environment.nsw.gov.au](http://www.environment.nsw.gov.au)

Report pollution and environmental incidents  
Environment Line: 131 555 (NSW only) or [info@environment.nsw.gov.au](mailto:info@environment.nsw.gov.au)  
See also [www.environment.nsw.gov.au](http://www.environment.nsw.gov.au)

ISBN 978-1-922767-64-6  
EES 2022/0162  
March 2022

Find out more about your environment at:

**[www.environment.nsw.gov.au](http://www.environment.nsw.gov.au)**

# Contents

Introduction	1
Displaying the Biodiversity Values Map in the ePlanning viewer	2
Generating a Property Report in the ePlanning viewer	2
More information	3

## Introduction

The ePlanning spatial viewer is part of the NSW Planning Portal developed and maintained by the Department of Planning and Environment. It provides access to spatial data associated with environmental planning instruments (EPIs) and other NSW Government websites that affect how land can be developed and used. It enables users to search for a property and generate a report on the EPIs and policies that apply to the property, as well as other information about the land.

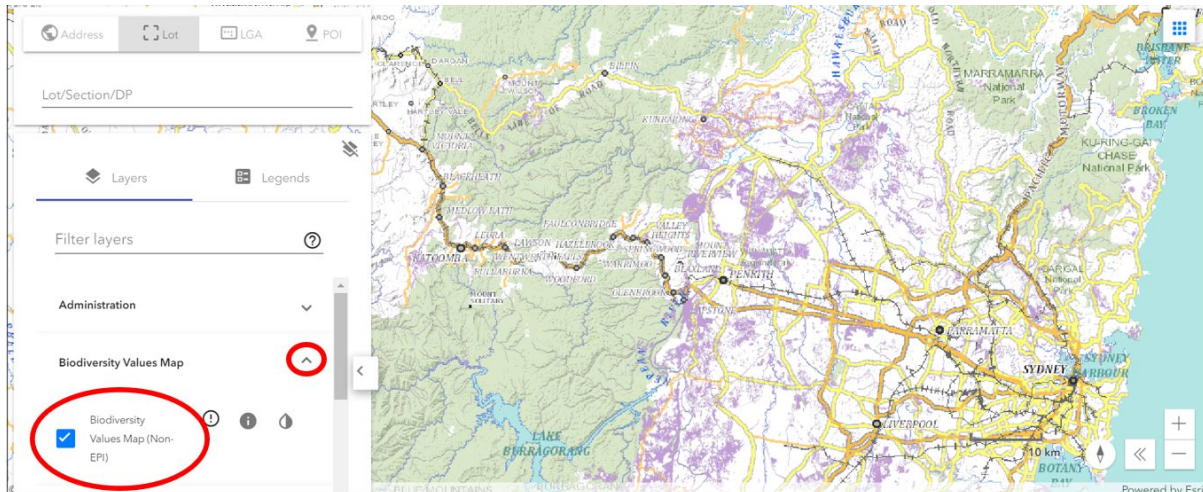
The Biodiversity Values (BV) Map has been included on the ePlanning viewer to raise awareness of the map and how it may affect development proposals on properties that include land on the BV Map. The BV Map is updated regularly to add or remove areas based on new information. There will be a few days lag for the updated BV Map data to be included in the ePlanning viewer. The Biodiversity Values Map and Threshold (BMAT) Tool should be used to view the current BV Map data.



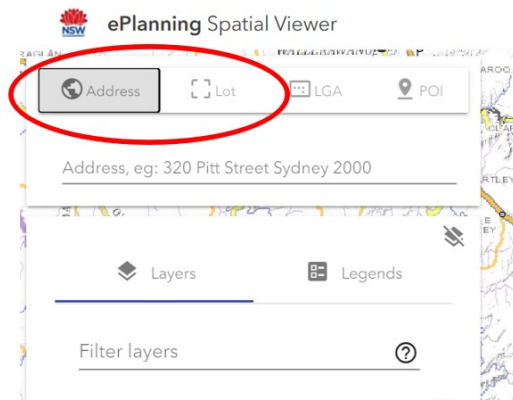
**Photo 1 F6 Reserve area, Sydney. Salty Dingo/DPE**

## Displaying the Biodiversity Values Map in the ePlanning viewer

1. To view the BV Map layer, you need to click on the 'v' symbol next to 'Biodiversity Values Map' in the list of layers and check the box next to 'Biodiversity Values Map (non-EPI)'. Note the Land Zoning Map under the 'Principal Planning Layers' are default layers visible in the viewer, and these can be turned off by unchecking their boxes.



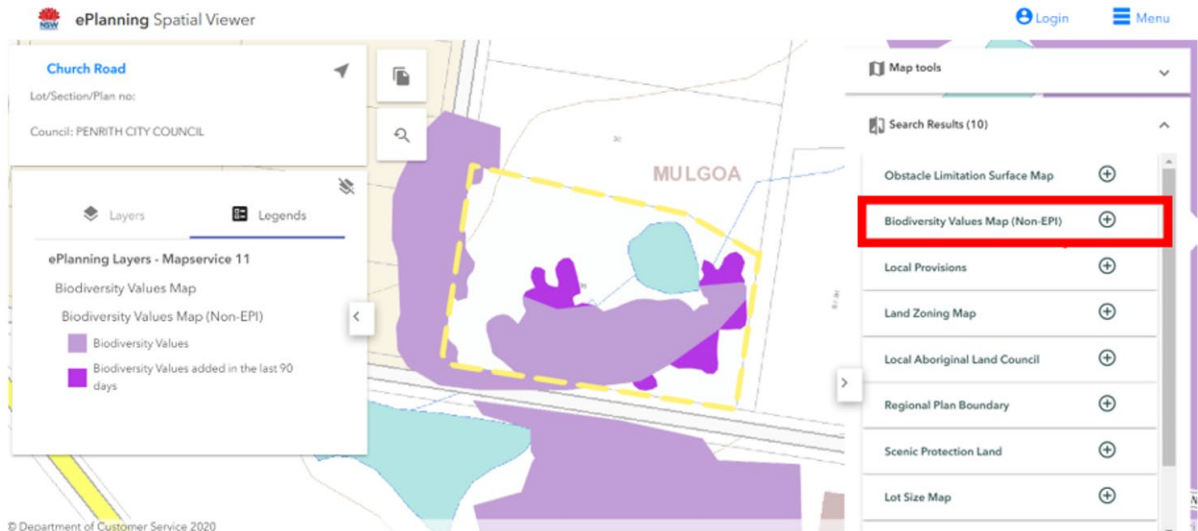
2. Individual properties can be searched using the address or Lot/Deposited Plan numbers.



3. Click on Legends to show land that has been on the BV Map for more than 90 days (light purple) and land added to the BV Map in the last 90 days (dark purple). Refer to 'Areas added to the BV Map' on the BV Map webpage for an explanation of how the 90 days affects development proposals.

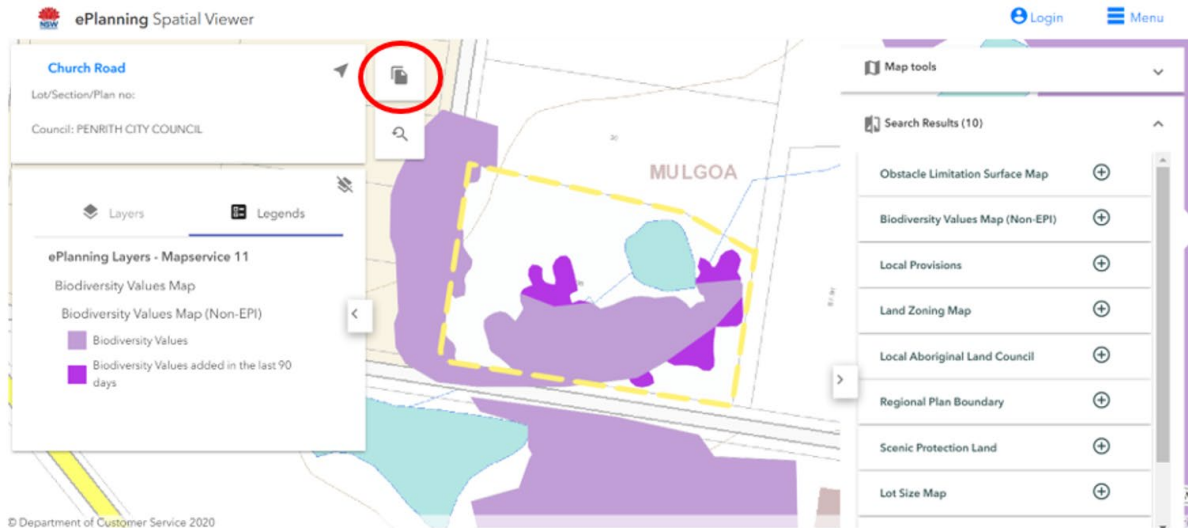


4. Biodiversity Values Map (non-EPI)' will appear in the Search Results on the right side of the viewer for properties on the BV Map. This can be expanded to provide information on the BV Map criteria for the layers that occur on the property and when the layers were added to the BV Map. It includes a link to the BV Map webpage.

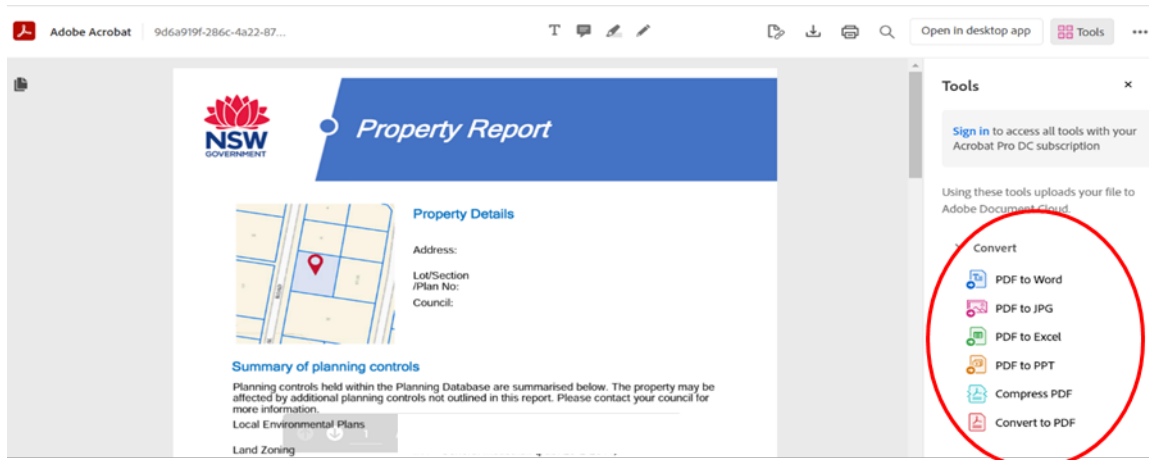


# Generating a Property Report in the ePlanning viewer

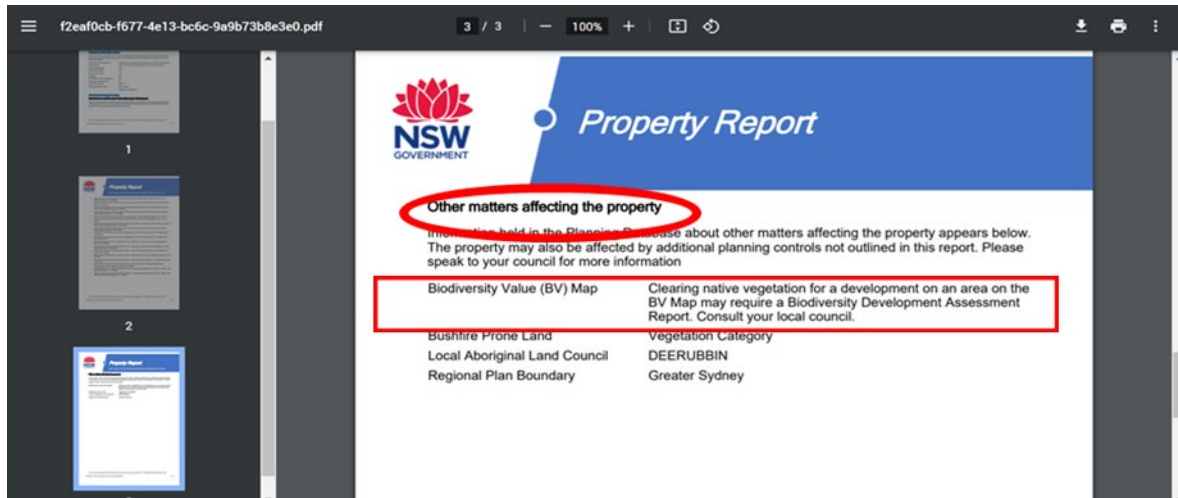
1. Click the **Report Icon** in the top left-hand corner of the map next to the property address to generate a property report.



2. To save a copy of the report, select the format of your choice from the Tools menu in the right-hand side panel. Convert and download a copy to your PC to print or save.



- For properties that include land on the BV Map, the BV Map will be listed under **Other matters affecting a property**, along with a note that developments may require a BDAR.



**Note:** It is important to recognise that the Biodiversity Values Map is not the only factor determining whether the Biodiversity Offsets Scheme applies to a clearing or development proposal.

For more information about the other factors, see: [When does the Biodiversity Offsets Scheme apply?](#)

## More information

- [Biodiversity Values Map](#)
- [Biodiversity Values Map and Threshold \(BMAT\) Tool](#)
- [ePlanning spatial viewer](#)
- [When does the Biodiversity Offsets Scheme apply?](#)